






Antarctica  
61°59'S 58°1'W

## Antarctica Direct: Fly the Drake Passage 10-Day

Drawing from 55+ years of sharing the icy wilds of Antarctica with adventurous guests, this voyage is an action-packed exploration of the continent with the pioneers of Antarctic cruising. Save travel time by flying directly from South America to the Antarctic peninsula, where we embark the *National Geographic Orion*, purpose-built for polar waters. Navigate rugged and remote shores, and set out to kayak among electric blue icebergs, hike beneath icy summits, and encounter charismatic wildlife—from boisterous penguins to stealthy leopard seals and multiple species of whale. Every departure is accompanied by an expert team of naturalists and a National Geographic Photography Expert, dedicated to helping you make the most of your experience at the ends of the Earth.

From  
**\$ 16,458** / per person  
Includes required flights

	<b>DATES</b> Jan, Feb and Dec		<b>DURATION</b> 10 Days
	<b>SHIPS</b> <i>National Geographic Orion</i>		
	<b>STARTS AT</b> Puerto Natales, Chile	→	 <b>ENDS AT</b> Puerto Natales, Chile

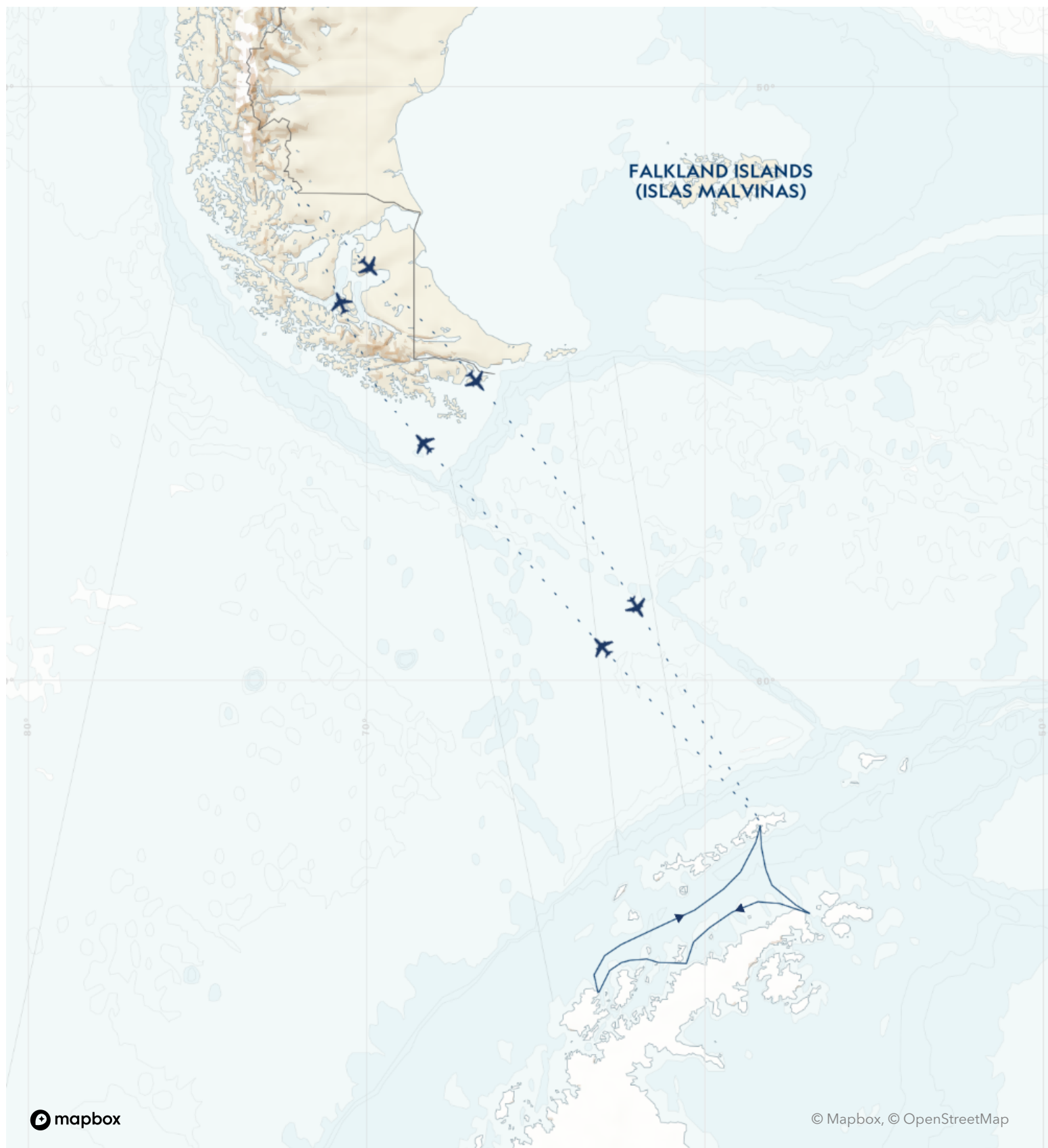
**NOTE:** For answers to questions you may have about our Fly the Drake Passage programs, please see our [FAQ page](#).

## Highlights

- ★ Get a head start on your Antarctica experience by flying across the Drake Passage from Puerto Natales to King George Island, landing at the Chilean research station which permanently operates there
- ★ Spend your days exploring the wildest corners of the continent with a top-notch team of naturalists and the most experienced polar captains in Antarctica leading the way
- ★ Marvel at the abundance of wildlife—a parade of gentoo, Adélie, and chinstrap penguins; stealthy leopard seals; several species of whales from humpbacks to orcas; and more
- ★ Hike, kayak, and Zodiac cruise in complete tranquility, surrounded by a pristine kingdom of snow and ice







## Day by day

### ■ DAY 1

#### Puerto Natales, Chile

Arrive in Puerto Natales. Originally a small fishing port, the town is nestled on the Last Hope Sound and boasts a stunning view of the sea surrounded by the Cerro Benitez Mountains—the gateway to Torres del Paine. Transfer from the airport to your hotel, where you'll enjoy dinner and attend a briefing on the following day's activities.

Ask your expedition specialist about joining an immersive [5-day pre-voyage extension](#) to explore Torres del Paine National Park, an incredible UNESCO biosphere reserve.

**Arrival Time:** Arrive to the hotel in Puerto Natales by 3:00 p.m. local time.

**Arrival City:** Puerto Natales, Chile

**Meals included:** dinner

### ◇ DAY 2

#### Puerto Natales / King George Island, Antarctica / Embark Ship

Following breakfast, check out of the hotel and transfer to the airport for your two-hour direct flight to King George Island and the thrilling start to your Antarctic adventure. Home to a diverse assortment of wildlife, King George Island also has a human presence. Researchers from a wide range of countries, including the U.S., Chile, Argentina and Brazil, call the various stations home. Your flight will land at the Chilean research station where the *National Geographic Orion* will be waiting offshore. Board Zodiacs to embark the ship and set sail as you begin exploring this amazing region.

**Meals included:** breakfast, lunch, dinner

### ◇ DAYS 3-8

## Exploring Antarctica

With long hours of daylight at this time of year, you'll have ample opportunities to explore. The schedule is flexible, allowing you to take advantage of the unexpected, whether you're watching whales at play off the bow of the ship, hiking alongside penguin highways or enjoying an evening Zodiac cruise amid porpoising penguins.

While wildlife is magnificent, ice defines the Antarctic. You'll get to know ice up close and personal—from icebergs the size of islands, bergy bits and near-vertical glaciers, to the fragile, nearly invisible layers that have just begun to freeze. One day, you might set out by kayak to encounter towering icebergs at water level; embark on a Zodiac excursion in search of seals and blue-eyed shags; or walk amid thousands of Adélie and gentoo penguins. The next, you might experience the thrill of the ship crunching through pack ice.

Everywhere you go in Antarctica, you'll be surrounded by opportunities to capture uniquely beautiful images. Along the way your expert expedition team will enrich every experience.

**Meals included:** breakfast, lunch, dinner

### ◇ DAY 9

#### King George Island / Disembark Ship / Puerto Natales

This morning, the ship will be moored off of King George Island once again. Following disembarkation and Zodiac rides to shore, your flight departs the White Continent and returns to Puerto Natales where you overnight at your hotel.

**Meals included:** breakfast, lunch, dinner

### ■ DAY 10

## Puerto Natales

Check out of your hotel and transfer to the airport to begin your journey homeward.

**Departure Time:** Outbound flights from Puerto Natales should depart no earlier than 1:00 p.m. local time (or as late in the day as possible).

**Departure City:** Puerto Natales, Chile

**Meals included:** breakfast

10-Day Expedition

Puerto Natales, Chile → Puerto Natales, Chile

2025 Departure Dates

Aboard *National Geographic Orion*

26 Dec			
--------	--	--	--

2026 Departure Dates

Aboard *National Geographic Orion*

19 Jan		
11 Feb	24 Feb	
01 Dec	20 Dec	



## ***National Geographic Orion***

---

**Guests**

102

**Cabins**

53

---

Joining the Lindblad fleet in 2013, the state-of-the-art *National Geographic Orion* serves as a luxurious base camp for voyages to the far-flung corners of the planet.

Built in Germany by the Cassens shipyard, the 102-guest *National Geographic Orion* was created with a high-ice class to be able to venture safely into polar regions. A ship of her size is seldom built with such ice-cutting ability, which makes her a rarity. She is yacht-scale, yet rugged enough to venture far afield, making her a perfect addition to the Lindblad fleet, which she joined in 2013. Her size and nimbleness offer the perfect combination of safety and liberty to voyage untrammelled locations. In fact, *National Geographic Orion* currently holds the distinction of having sailed further south than any other Lindblad vessel.



Her menu, created by famed Australian chef, Serge Dansereau, owner of Sydney's acclaimed Bather's Pavilion restaurant, enormously popular with *National Geographic Orion's* guests, so impressed Sven Lindblad, that Serge, a chef-owner who shared the Lindblad commitment to serving local and sustainable food, was enlisted to design the dining program for the entire Lindblad-National Geographic fleet.

*National Geographic Orion* is gracious and intimate, with a rewarding, almost clubby feeling. Of her many amenities and features, the most appealing is her outside deck space which beckons in the balmy reaches of the Pacific, and on those days in Antarctica when the midnight sun and the spectacle of the ice makes going indoors, let alone going to bed, impossible.





# Cabin Categories

## Category 1

**Main Deck:** #316, 318-321

Cabins feature a luminous oval window and configurable beds: two single beds that can be converted to a queen. An armchair, reading lamps, a flat screen TV, two bedside tables, coffee table, desk, and climate controls complete the amenities. Marble bathrooms are generously sized and include a spacious shower stall with a glass door.



## Category 2

**Main Deck:** #302-312, 314, 315, 317

Cabins feature a luminous oval window and configurable beds: two single beds that can be converted to a queen. An armchair, reading lamps, a flat screen TV, bedside table, coffee table, desk, and climate controls complete the amenities. Marble bathrooms are generously sized and include a spacious shower stall with a glass door.



## Category 3

**Upper Deck:** #401-412, 414-419

These suites feature a sitting area with a large window, a sofa—except slightly smaller #401 & #402—an armchair or two, writing/laptop desk, reading lamps, coffee table, flat screen TV, bedside table, & climate controls. Beds are configurable (call for details). Marble bathrooms include a spacious shower stall with a glass door.



## Category 4

**Bridge Deck:** #511, 515

These two suites feature separate sleeping and sitting areas, with a chair and armchair, coffee table, and a two-cushion sofa facing an expansive window. Beds are configurable (call for details). Ample storage, reading lamps, a flat screen TV, and climate controls complete the amenities. Marble bathrooms are generously sized and include a spacious shower stall with a glass door.



## Category 5

**Bridge Deck:** #501, 503-506, 508

These spacious suites feature open living areas and sliding glass doors opening to a shared French balcony. Beds are configurable (call for details). A separate sitting area with armchairs and a sofa, a writing/laptop desk, coffee table, well-placed reading lamps, a flat screen TV, and climate controls complete the decor. Marble bathrooms are generously sized and include a spacious shower stall with a glass door.



## Category 6

**Bridge Deck:** #502, 507, 509\*, 510

These large, elegant suites feature a French balcony, except for #509 which has double windows. Each provides a separate living area with a sofa and two armchairs, coffee table, except for #502, which uniquely offers a 'soaking tub with a view' in addition to a shower stall and expansive vanity. All cabins have reading lamps, a flat screen TV, and climate controls. Marble bathrooms are generously sized and include a spacious shower stall with a glass door.



## Category 1 Solo

**Main Deck:** #301, 322, 323

These solo cabins feature a window or two portholes, a queen-size bed, except for #301 which has a double bed, writing desk and chair, climate controls, reading lamps, coffee table, two bedside tables, and a TV. Marble bathrooms are generously sized and include a roomy shower stall with a glass door.



## Category 3 Solo

**Upper Deck:** #512

This solo suite features two single beds and two large windows, plus two armchairs and a small table, reading lamps, coffee table a flat screen TV, and climate controls. The marble bathroom is generously sized and includes a spacious shower stall with a glass door.



# Deck Plans

## Observation Deck



## Bridge Deck

- Category 4
- Category 5
- Category 6
- Category 3 Solo



## Upper Deck

- Category 3



## Main Deck

- Category 1
- Category 2
- Category 1 Solo



## Expedition Deck





# Ship amenities

## Public Areas

Reception; two dining areas; lounge with bar and state-of-the-art presentation facilities; B&H Photo locker; sundeck with a whirlpool hot tub that doubles as a plunge pool in warm climates; observation lounge and library; global gallery; a marina platform; plus open access to the Bridge, the Captain, officers and on-duty wildlife spotters.

## Meals

Meals are served in the dining room, or weather permitting, the outdoor café, at a single seating with unassigned tables for an informal atmosphere and easy mingling. Menus feature sustainable choices, local where possible.

## Cabins

All cabins face outside with windows or portholes, private bathroom, and climate controls. Cabins feature a coffee table, lounge chair, desk, phone, TV with on demand entertainment, multiple outlets and USB, mini refrigerator, and safe. Luxury linens and pillows. Botanically inspired shampoo, conditioner, shower gel, and lotion are all available in cabin bathrooms, as well as an Expedition Essential Kit. Hair dryers, complimentary insulated water bottles and a National Geographic Atlas is available in each cabin.

## Expedition Equipment

Zodiac landing craft, a fleet of double kayaks, a crow's nest camera, a hydrophone, underwater video cameras, video microscope, and an ROV. Plus, for South Pacific voyages: snorkeling gear for all guests, scuba gear for a number of pre-qualified guests, stand-up paddleboards, glass-bottom Zodiac, and splash-cam.

## Special Features

A full-time doctor, undersea specialist, National Geographic photographer, Lindblad-National Geographic certified photo instructor and video chronicler. On all South Pacific voyages, there are a minimum of two dive masters. A central staircase, and elevator reaches all decks. Enjoy teatime, daily. And the smoothies served after the sunrise stretch sessions on the sundeck in Polynesia. Don't miss either opportunity.

## Wellness

A fitness center, LEXspa treatment room and sauna, staffed by wellness specialists.

## Self-Disinfecting Ships

ACT Clean Coat™ is a light-activated, self-disinfecting cleaning process that continuously breaks down viruses, bacteria, mold, and airborne allergens across all ship surfaces. This non-toxic, chemical-free system also helps us save over one million gallons of water each year in our cleaning procedures.

## Special Offers

### SUITE EXCLUSIVES

Spacious living areas and incredible views immerse you in the beauty of your marine surroundings.

Our new Suite Exclusives package helps make your voyage all the more memorable. [Learn more](#)

---

### SAVE 5% TRAVELING AS A GROUP

Save 5% when traveling as a group of eight or more people. Valid on voyage fares only and not applicable on extensions or airfare. Deposit, final payments, and cancellation policies for group travel vary from our regular policies. Valid for new bookings only, subject to availability, and may not be combined with other offers. Call for details.

---

### CELEBRATE LIFE'S MILESTONES

Celebrate a milestone with a group of eight or more and enjoy a special amenity package including: 5% savings on voyage fares, custom group photo, US\$150 shipboard credit for the group, and other special gifts. Milestone celebration to be communicated at time of booking.

---

### COMBINING OFFERS

Certain offers may be combinable, up to two savings opportunities, except where noted otherwise. For example, travel with a group of 8 or more on back-to-back expeditions, and take advantage of both savings.

## Included in price

All accommodations aboard ship or in hotels per itinerary; all meals as indicated in the itinerary, both aboard and onshore; beer, wine, cocktails, liquors and spirits aboard the ship (except certain premium brands which are available for purchase); hors d'oeuvres, 24-hour access to snacks, premium coffees and teas, non-alcoholic beverages, and filtered water; excursions and airport transfers, as indicated in the itinerary, as indicated in the itinerary; crew gratuities; exploration tools curated to destination, such as Zodiacs, kayaks, snowshoes and cross-country skis; guidance and company of our leading expedition staff; assistance by the National Geographic photographer and National Geographic-Lindblad Expeditions certified photo instructor; Basic Wi-Fi aboard ship; complimentary reusable water bottle; access to the OM System Photo Gear Locker; presentations by expedition staff and expert guest speakers; complimentary parka; complimentary reusable water bottle; onboard physician consultations; morning stretch classes and 24-hour access to exercise equipment; 24-hour access to lounges, observation decks, library, and other shared spaces; park and site entrance fees, special access permits, and port taxes. Unused services or items included in our programs are non-refundable.

## Not included in price

Airfare (except flights\* when indicated as included); pre- and post-expedition extensions; additional hotel nights (except when indicated as included); private transfers; laundry, spa treatments, enhanced and premium Wi-Fi plans aboard expedition fleet; phone services (except when indicated as included); travel protection plans; and passport, visa, and immigration fees.

\*Recommended flight costs include flight(s) that take place during the date range of your trip to transport travelers from one itinerary destination to another. This cost also includes ground transportation, luggage transfer, and airport assistance. If you prefer to arrange your own flights privately, have alternate means of transport, or wish to modify at a later time, please contact an Expedition Specialist at 1.833.400.0831

Additional costs associated with medical services outside onboard physician consultation.

For select voyages, completing a medical evaluation form with VIKAND is required. If you utilize your physician, VIKAND's processing fee for your documentation will be added to your National Geographic-Lindblad Expeditions invoice. If you utilize VIKAND's physicians, an additional charge will be due and payable directly to VIKAND.

## Travel protection plan

We strongly recommend our guests to take advantage of our Travel Protection Plan. This plan offers comprehensive coverage to protect you from cancellation fees, costs incurred due to trip delays/interruption, damage or loss of baggage, medical assistance, and evacuation during your travels. Our Travel Protection Plan is available for U.S. residents only, and may be purchased any time prior to final payment due date, Travel Protection premiums are non-refundable once plan is purchased. Learn more about our Travel Protection "Plus" Plan: <https://www.expeditions.com/terms-conditions/travel-protection-plan/>

## Cancellation policy

Review our cancellation policy: <https://www.expeditions.com/cancellation-policy/>