



Peru, South America & River Cruises
 4° 30' S 73° 34' W

Upper Amazon: A River Expedition 6-Day

Sites—either before or after your voyage.






Embark on an unforgettable journey aboard the 42-guest riverboat *Delfin III*. Navigate winding jungle waterways by skiff or kayak, seeking out an array of diverse wildlife. Glide past giant lily pads, gaze up at majestic ceiba trees, and soak in breathtaking sunsets reflected on the tranquil lakes hidden within the vast Amazon. Connect with local *ribereños* communities, whose lives and culture we help sustain through our visit.

Enhance your journey by combining this Amazon expedition with an exploration of Machu Picchu, Cusco, and the Sacred Valley—three UNESCO World Heritage

From

A\$ 8,221 / per person

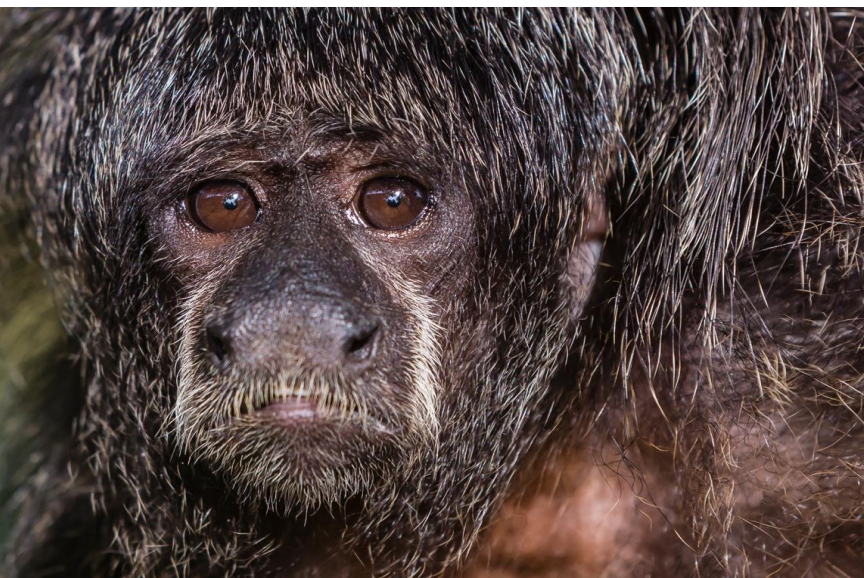
Does not include flights

 DATES Jun, Jul, Aug, Sep, Nov and Dec	 DURATION 6 Days
 SHIPS <i>Delfin III</i>	
 STARTS AT Lima, Peru	→  ENDS AT Lima, Peru

Minimum Age Requirement: Any children booked on *Delfin II* or *Delfin III* voyages must be at least 7 years old at time of embarkation.

Highlights

- ★ Explore the seasonally flooded forest of Pacaya-Samiria National Reserve at the confluence of the Amazon River with a team of experienced naturalists
- ★ Meet the welcoming ribereños, natives of the reserve, and learn about their ways of life along the river
- ★ Watch for elusive Amazon wildlife like pink river dolphins, monk saki monkeys, and piranhas, while getting photo tips from a National Geographic-Lindblad Expeditions Certified Photo Instructor
- ★ Explore even more: combine your Amazon expedition with a voyage to Machu Picchu on Exploring Peru: Machu Picchu and the Amazon





Day by day

■ DAY 1

Lima, Peru

Arrive in Lima, Peru’s thriving capital, and transfer to the convenient Wyndham Grand Costa del Sol Lima Airport hotel, located at the airport. Most international flights arrive in the late evening. Opt to arrive early for a [Lima pre-voyage extension](#) staying at the iconic Country Club Lima Hotel. The extension adds just a day to the expedition and gives you a chance to rest, relax and see this UNESCO World Heritage designated city.

Arrival Time: Anytime after 12:00 p.m.

Arrival City: Lima, Peru

◇ DAY 2

Lima / Iquitos / Nauta / Embark Ship

After breakfast, fly to Iquitos in the Peruvian Amazon basin and continue overland to the riverside village of Nauta where the ship awaits. Settle into your cabin and gather for a welcome dinner of fine Peruvian cuisine on board. Tonight, step out on deck to gaze at the magnificent Amazon night sky.

Meals included: breakfast, lunch, dinner

◇ DAYS 3-5

Exploring the Pacaya-Samiria Reserve

Explore the Pacaya-Samiria National Reserve, a pristine swath of jungle stretching more than five million acres and harboring some of the Amazon’s most fascinating flora and fauna. The reserve is bordered by the Marañón and the Ucayali, two powerful rivers that converge to create the famed Amazon, which floods annually with nutrient-rich waters and is known locally as the Mirrored Forest

for the reflections created by its seasonal glassy water.

Set out into this remarkable wilderness on daily excursions by skiff, kayak and, when the water level permits, hikes on dry land. Look for sloths and monkeys, including variably colored saddleback tamarins, noisy howlers and shaggy-tailed monk saki monkeys. Watch for an astounding variety of birds, from tanagers and hummingbirds to parrots and endangered scarlet macaws. In the river, look for massive paiche fish, the Amazon’s largest; rare pink dolphins; and the infamous piranhas.

One of the unexpected joys of traveling in the Upper Amazon of Peru is interacting with the local ribereños, the traditional people who live on the riverbanks. Visit the local non-profit Minga Peru, including a program of handicraft development, radio broadcasts, women’s health initiatives and efforts in sustainable farming.

Meals included: breakfast, lunch, dinner

■ DAY 6

Nauta / Disembark Ship / Iquitos / Lima

Disembark in Nauta, stopping at the Amazon Rescue Center on the drive to Iquitos. Fly to Lima and connect for flights home. Ask your expedition specialist about options to extend your stay, including an overnight at the Wyndham Grand Costa del Sol Lima Airport hotel.

Departure Time: After 9:00 PM local time.

Departure City: Lima

Meals included: breakfast, lunch

Expedition

Lima, Peru → Lima, Peru

2026 DEPARTURE DATES

Aboard *Delfin III*

08 Jun				
27 Jul				
17 Aug	24 Aug			
14 Sep				
09 Nov	30 Nov			
07 Dec				



Delfin III

GUESTS

42

CABINS

21

Explore in tropical style on this elegant 42-guest, all-suite river ship

With just 21 suites in four categories, all with floor-to-ceiling windows, *Delfin III* sails the Ucayali and Marañón rivers to the confluence of the mighty Amazon in Peru's Upper Amazon year-round with style. Locally built and carrying 30 marvelous crew, most from the region, this elegant ship was inducted into the Relais & Châteaux group, recognizing its commitment to local nature and culture, and its exquisite Amazonian-Peruvian cuisine.

The observation deck, with an open-air whirlpool hot tub at the stern, has a large lounge and bar accommodating all guests for recaps, presentations, and to take in the passing scenery. Everyone gathers with open, relaxed seating for meals aboard in the spacious dining room. The ship is sustainably furnished featuring handmade furniture, art and textiles from the surrounding communities that are supported by our guests.

Choose from four categories of large suites aboard: the singular Andes Suite, measuring 597 square feet, with 180-degree windows at the bow to take in the surroundings; two corner Amazon Suites; 10 Upper Suites; and 8 Suites, with en suite facilities, comfortable chair and desk.



Cabin Categories

Suite

MAIN DECK #103-110

Suites on this deck measure 237 sq.ft. and feature floor-to-ceiling windows for stunning views of the passing life along the river. Includes two twin beds that can convert to a king-size bed, bedside tables with reading lamps, large window, comfortable sitting area with sofa. Bathrooms are spacious with a large shower and large mirror vanity.



Upper Suite

UPPER DECK #202-211

Upper Suites on this deck measure 237 sq. ft. and feature floor-to-ceiling windows for stunning views of the passing life along the river. Includes two twin beds that can convert to a king-size bed, bedside tables with reading lamps, large window, comfortable sitting area with sofa. Bathrooms are spacious with a large shower and large mirror vanity.



Amazon Suite

MAIN DECK #101-102

Amazon Suites are 270 sq. ft., with oversized windows that provide incredible 90-degree corner views overlooking the river. Configured with a fixed king bed, these suites accommodate triple occupancy in an added twin. Amenities include bedside tables and reading light, ample closet, small sofa chair and desk. Bathrooms are spacious with a large shower, separate toilet and sink area.



Andes Suite

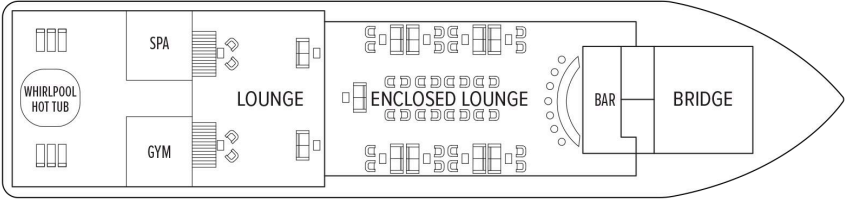
UPPER DECK #201

The Andes Suite measures 597 sq. ft. and features a king bed with breathtaking views of the expansive river through forward-facing, 180-degree floor-to-ceiling windows. Amenities include bedside tables with reading lamps and a comfortable sitting area with sofa. Bathrooms are spacious with a large shower, and separate bathtub and large mirror with double vanity.



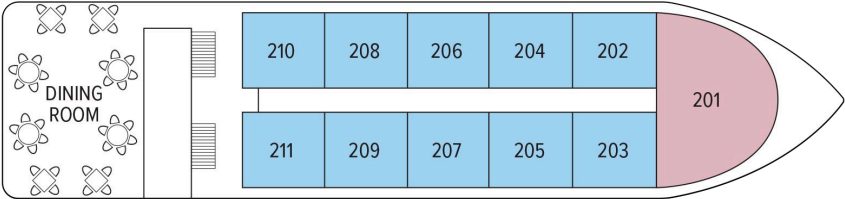
Deck Plans

Observation Deck



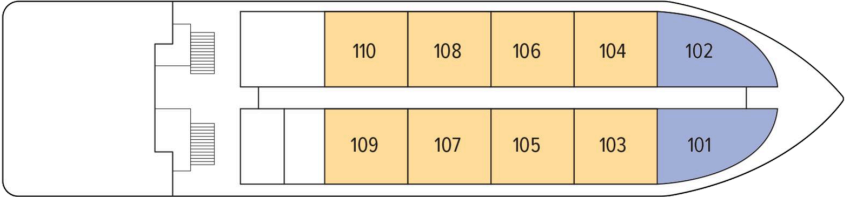
Upper Deck

- Upper Suite
- Andes Suite



Main Deck

- Suite
- Amazon Suite



Ship Amenities

Public Areas

Enjoy sweeping views in spacious public spaces including an air-conditioned presentation room and lounge, an open-air sun deck with whirlpool hot tub, small exercise room and wellness spa and a dining room with a 270-degree panorama. Visit the open bridge, where you are welcome anytime.

Dining

Meals are artfully prepared, featuring sustainable, locally sourced cuisine. The dining room accommodates all guests for a single seating. Enjoy complimentary beer, wine, cocktails and spirits aboard the ship (except certain super premium brands which are available for purchase).

21 Outside Suites

The spacious, air-conditioned guest suites on two decks offer exceptional river views with floor-to-ceiling windows, including the Andes Suite with 180-degree views and two Amazon Suites with corner windows. Each spacious suite is a serene oasis, redolent of tropical wood and with local textiles and art. The Amazon Suites can be reserved as a triple, with a king and an added twin bed.



Expedition Tools

Explore the tributaries that feed these rivers and search for wildlife aboard 15-person skiffs, which feature individual seats with cushions and plenty of legroom. Kayaks offer a quiet way to explore remote, seldom-visited side streams.



Special Features

Delfin III's Relais & Chateaux designation reflects the food, service and commitment to conservation. Get a true "taste of the region," as much of the food is grown in the surrounding rainforest by local farmers who maintain sustainable agricultural practices. Naturalists are from the area, and you travel with a veteran National Geographic-Lindblad Expeditions Expedition Leader and an exclusive certified naturalist-photo instructor.

Special Offers

COMPLIMENTARY TRANSFERS

We include arrival and departure airport transfers for all guests in Ecuador and Peru, whether by group, hotel shuttle, or private transfer (please share your flight information two weeks before your departure). In addition, we provide transfers for guests who are booked on ticketed internal flights from Guayaquil, Quito, or Lima to and from the Galapagos, Cusco or Iquitos.

CELEBRATE LIFE'S MILESTONES

Celebrate a milestone with a group of eight or more and enjoy a special amenity package including: 5% savings on voyage fares, custom group photo, US\$150 shipboard credit for the group, and other special gifts. Milestone celebration to be communicated at time of booking.

10% OFF BACK-TO-BACK VOYAGES

Save 10% on consecutive departures, applicable on voyage fares only and not valid on extensions or airfare. Valid for new bookings only, subject to availability, and may not be combined with other offers. Call for details.

SAVE 5% TRAVELING AS A GROUP

Save 5% when traveling as a group of 8 or more people. Valid for new bookings only on select departures, subject to availability, not applicable on extensions, and may not be combined with other offers. Call for details.

COMBINING OFFERS

Certain offers may be combinable, up to two savings opportunities, except where noted otherwise. For example, travel with a group of 8 or more on back-to-back expeditions, and take advantage of both savings.

INCLUDED IN PRICE

All accommodations aboard ship or in hotels per itinerary; all meals as indicated in the itinerary, both aboard and onshore; free beer, wine, cocktails liquors and spirits aboard the ship (except certain premium brands which are available for purchase; hors d'oeuvres, non-alcoholic beverages, and filtered water; excursions; arrival/departure transfers are included for hotel arrangements made through National Geographic-Lindblad Expeditions; gratuities in Peru to local guides, drivers and tour escort exploration tools curated to destination, such as kayaks and skiffs; guidance and company of our leading expedition staff; presentations by expedition staff and expert guest speakers; assistance by the Lindblad Expeditions-National Geographic Certified Photo Instructor; Wi-Fi aboard ship; complimentary reusable water bottle; onboard physician consultations; 24-hour access to exercise equipment; 24-hour access to lounges, observation decks, library, and other shared spaces; park and site entrance fees, special access permits, and port taxes. Unused services or items included in our programs are non-refundable.

NOT INCLUDED IN PRICE

Airfare* (except flights when indicated as included); pre- and post-expedition extensions; additional hotel nights (except when indicated as included); crew gratuities; private transfers; laundry, spa treatments, and phone services (except when indicated as included); travel protection plans; and passport, visa, and immigration fees.

*Recommended flight costs include flight(s) that take place during the date range of your trip to transport travelers from one itinerary destination to another. This cost also includes ground transportation, luggage transfer,

and airport assistance. If you prefer to arrange your own flights privately, have alternate means of transport, or wish to modify at a later time, please contact an Expedition Specialist at 1.833.400.0831

Additional costs associated with medical services outside onboard physician consultation.

TRAVEL PROTECTION PLAN

We strongly recommend our guests to take advantage of our Travel Protection Plan. This plan offers comprehensive coverage to protect you from cancellation fees, costs incurred due to trip delays/interruption, damage or loss of baggage, medical assistance, and evacuation during your travels. Our Travel Protection Plan is available for U.S. residents only, and may be purchased any time prior to final payment due date, Travel Protection premiums are non-refundable once plan is purchased. Learn more about our Travel Protection "Plus" Plan: <https://www.expeditions.com/terms-conditions/travel-protection-plan/>

CANCELLATION POLICY

Review our cancellation policy: <https://www.expeditions.com/cancellation-policy/>