



Indonesia's Spice Islands and Raja Ampat Aboard Aqua Blu

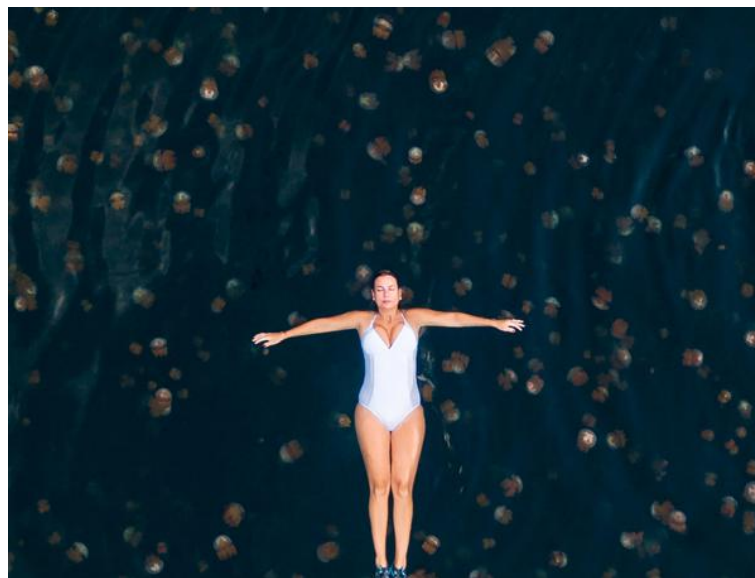
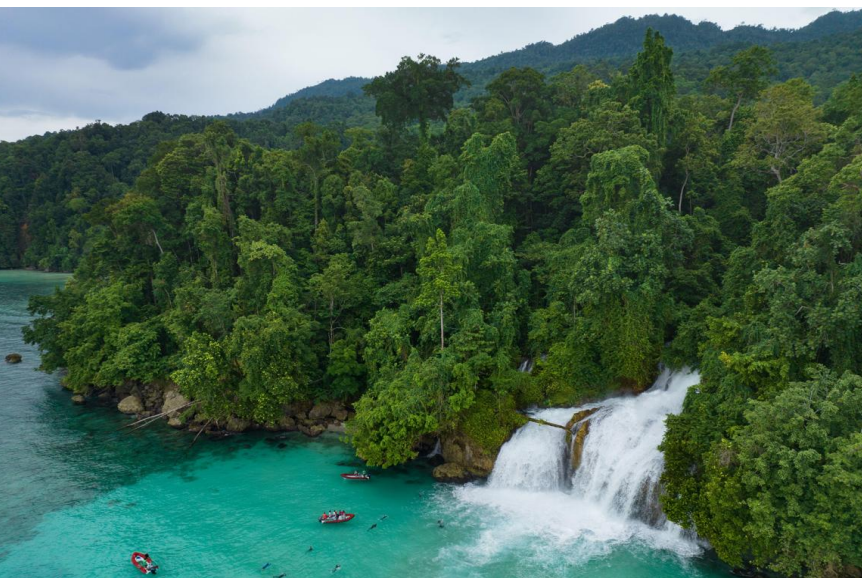
Sail into the heart of Indonesia's Coral Triangle where remote corners protect pristine reefs, hidden lagoons and towering volcanic landscapes. Blending adventure and luxury, this active expedition offers unparalleled opportunities to snorkel through vibrant marine ecosystems, explore ancient rock art and encounter spectacular wildlife. As you journey across azure waters aboard the elegant *Aqua Blu*, each destination will reveal a new facet of this extraordinary region—from tranquil beaches and lush rainforests to historic spice trade outposts.

From
\$ 33,976 / per person
Does not include flights

 DATES Nov	 DURATION 14 Days
 SHIPS <i>Aqua Blu</i>	
 STARTS AT Jakarta, Indonesia	→  ENDS AT Jakarta, Indonesia

Highlights

- ★ Spend several days snorkeling in Raja Ampat, one of the richest coral reefs in the world and home to a diversity of sharks, rays, reef fish, nudibranchs and more
- ★ In Misool's One Thousand Temples karst island and lagoon complex, marvel at 15,000-year-old rock art and swim in an otherworldly stingless jellyfish lake
- ★ Search for scores of sea snakes in the waters of Manuk, and swim in the refreshing plunge pool of Momon's Kiti Kiti waterfall
- ★ Wander through preserved forts, nutmeg plantations and quiet fishing villages to learn about the spice island's involvement with British and Danish trade operations in the 17th century





Day by day

■ DAY 1

Jakarta, Indonesia

Arrive in Jakarta, Indonesia's capital city, and transfer to the Swissôtel Jakarta PIK Avenue hotel (or similar). Enjoy the hotel facilities and rest up for your expedition.

◇ DAY 2

Jakarta / Ambon / Embark Ship

Travel by air from Jakarta to Ambon on the recommended flight*; transfers to the airport and luggage assistance will be provided. Board the elegant *Aqua Blu*, settle into your cabin and meet your fellow explorers at a welcome reception and dinner as the ship sets sail.

**If you are not purchasing the recommended group flight, please get in touch to confirm your arrangements.*

Meals included: breakfast, lunch, dinner

◇ DAY 3

At Sea

Spend the day relaxing on board where luxurious amenities await. Lounge on the deck with a book, soak in the views of azure waters or refine your photography skills with guidance from your National Geographic certified photography instructor. Engage in captivating talks from your expedition team about the wildlife, geology and cultures that will shape your journey.

Meals included: breakfast, lunch, dinner

◇ DAY 4

Pulau Wayil / Pulau Yillet, Misool, Raja Ampat

Spend the next several days discovering Raja Ampat, part of the Coral Triangle and home to one of the planet's richest marine ecosystems. Arrive in Misool, the second largest island in Raja Ampat. In the Wayil Islands, discover breathtaking karst limestone peaks and hidden lagoons. Set out on kayaks or snorkel in turquoise waters alive with sea fans, blue fusiliers, manta rays and trevallies. On Yillet island—or "pulau" in Indonesian—uncover soft coral reefs teeming with reef sharks, parrotfish, moray eels and colorful nudibranchs. Keep an eye out for cockatoos as you make your way to shore. Cap the day on a secluded beach relaxing or snorkeling close to shore before sunset cocktails.

Meals included: breakfast, lunch, dinner

◇ DAY 5

One Thousand Temples

Visit Misool's magnificent One Thousand Temples karst island and lagoon complex, where you'll see ancient rock art estimated to be about 15,000 years old. Those up for an arduous climb will get the chance to swim in stingless jellyfish lakes. Living without predators, these moon, golden medusa and Cassiopeia jellyfish have developed stingless bodies. Traverse dramatic karst seascapes by Zodiac and delve into Tomolol Cave, a mesmerizing subterranean river system. Beneath the surface snorkeling reveals a kaleidoscope of marine life, from pygmy seahorses to barracudas and colorful gobies.

Meals included: breakfast, lunch, dinner

◇ DAY 6

Pulau Daram

Discover Daram, the easternmost island of Misool and the most remote part of the Misool Marine Reserve. It's known for its exceptional marine life

and is home to hawksbill and green turtles that nest on untouched beaches. Discover vast underwater landscapes, encountering lionfish, Christmas tree worms, clownfish and more—a haven for underwater photography enthusiasts.

Meals included: breakfast, lunch, dinner

◇ DAY 7

Pulau Sabuda

Step ashore on the uninhabited and privately owned forested island of Sabuda, a sanctuary of natural beauty that rises nearly 150 meters above sea level and is surrounded by a vibrant coral reef. Stroll along one of the island's charming beaches or hidden coves and snorkel or kayak in tranquil, turquoise waters.

Meals included: breakfast, lunch, dinner

◇ DAY 8

Teluk Sebakor, West Papua

Sebakor bay—or “teluk” in Indonesian—boasts stunning coastlines shaped by karst rock formations and narrow inlets. A mesmerizing network of shallow reefs and waterways, bordered by vast mangroves and rivers that wind deep into the Papuan mainland, make this area ideal for kayaking and Zodiac cruising. The crown jewels of Sebakor, though, are its offshore seamounts boasting vibrant reefs and abundant marine life. You'll also explore a bat cave nestled in a natural rocky cathedral along the shoreline. Drift through crystal-blue waters on a Zodiac to spot the colony of bats clinging to the walls and ceilings.

Meals included: breakfast, lunch, dinner

◇ DAY 9

Momon

Arrive at the tropical haven of Momon, located on West Papua's Bomberai Peninsula. Marvel at Kiti Kiti

waterfall which cascades directly into the sea and swim to its plunge pool for an invigorating natural shower. Snorkel or kayak along the jungle-fringed coastline, keeping an eye out for hornbills and forest kangaroos.

Meals included: breakfast, lunch, dinner

◇ DAY 10

Pulau Koon / Pulau Gorong

Discover Koon, a tiny but beautiful island in the Banda Sea. Here, you'll snorkel in the underwater realm of “Too Many Fish,” an area known for possible sightings of reef sharks, leopard sharks and hammerheads. Explore Gorong Island's shallow reefs and dramatic drop-offs, accessed via a narrow waterway—a paradise for marine enthusiasts.

Meals included: breakfast, lunch, dinner

◇ DAY 11

Pulau Manuk

Begin your day with a sunrise breakfast aboard *Aqua Blu*, set against the dramatic silhouette of Pulau Manuk's towering cliffs—a volcanic island that rises three kilometers from the ocean floor. Uninhabited by humans, this isle provides a haven for nature's predators: fish-eating birds dive with precision into its pristine waters, and sea snakes and reef sharks gather at its underwater thermal springs. Be on the lookout for frigatebirds, gannets and other seabirds that nest in Manuk's verdant treetops. Enjoy swimming or kayaking in the ocean before taking part in a cooking demonstration aboard the ship.

Meals included: breakfast, lunch, dinner

◇ DAY 12

Pulau Ai / Pulau Run

At Pulau Ai, one of the westernmost gems of the Banda Islands, immerse yourself in crystalline waters as you swim or snorkel among coral gardens full of

reef fish. Afterward, step ashore for a guided tour of Ai where you'll learn about the island's storied past and visit its historic nutmeg storehouses, once vital to the lucrative spice trade. Be sure to keep your camera handy as you explore with your National Geographic certified photo instructor by your side.

In the afternoon, journey to the shores of Pulau Run, an idyllic island that was a center for nutmeg trade in the 17th century and was famously traded for Manhattan in 1667 by the British and Dutch. In the evening, enjoy a cocktail party on these historic sands, watching the sun sink gracefully into the sea.

Meals included: breakfast, lunch, dinner

flight*; transfers to the airport and luggage assistance will be provided. Upon arrival, connect to your flight home.

**If you are not purchasing the recommended group flight, please get in touch to confirm your arrangements.*

Meals included: breakfast

◇ DAY 13

Pulau Nusa Laut / At Sea

Begin your day with an early morning swim in tranquil ocean waters, followed by snorkeling or kayaking excursions. On the northern shores of Nusa Laut, explore the picturesque fishing villages of Ameth and Akon, where time seems to slow amidst the island's serene beauty. With luck, you'll spot the elusive dugong, the Southeast Asian cousin of the gentle American manatee, in its natural environment.

As your journey continues toward Ambon, take part in a cooking lesson that brings the flavors of the Spice Islands to life. Enhance your day with insightful onboard presentations from your naturalist guides, deepening your connection to the landscapes, cultures and wildlife you've encountered along the way.

Meals included: breakfast, lunch, dinner

■ DAY 14

Ambon, Maluku / Disembark Ship / Jakarta

Disembark in Ambon after breakfast and transfer to the airport to fly to Jakarta on our recommended

Expedition

Jakarta, Indonesia → Jakarta, Indonesia

2026 Departure Dates

Aboard *Aqua Blu*

08 Nov				
--------	--	--	--	--



Aqua Blu

Guests

28

Cabins

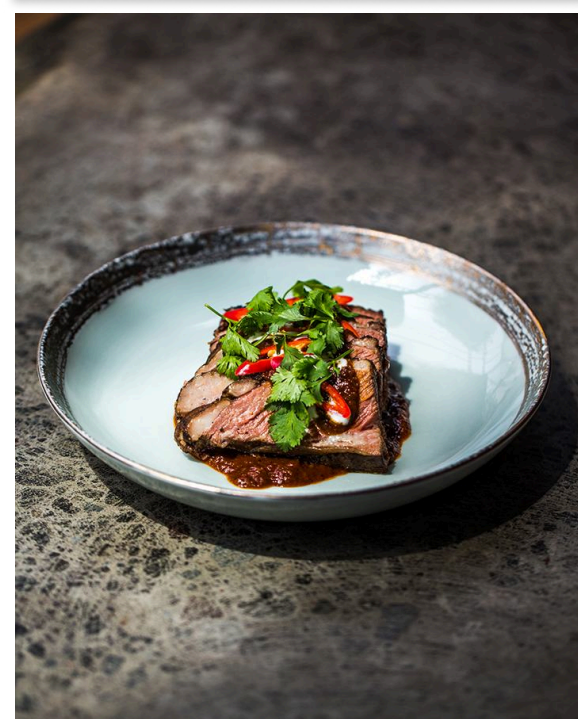
14

A one-of-a-kind explorer yacht fully equipped for undersea and on-shore adventures

Just under 200 feet long and featuring 14 individually designed suites, the Aqua Blu offers an intimate environment that reflects its history as a former British naval explorer and a private yacht for a European aristocratic family. A 2019 refurbishment by renowned Dutch yacht designer Cor D. Rover brought this refined vessel up to world-class cruising specifications, blending modern luxury with ultimate comfort and safety.

Exceptional amenities, including an outdoor workout area and hot tub, a stylish lounge bar and a tranquil spa featuring Balinese massage and aromatherapy, elevate and enhance your time exploring this wild and stunningly beautiful region.

Enjoy an innovative menu curated by renowned chef Benjamin Cross, which draws inspiration from Indonesia's fabled spice trade route as well as European and Mediterranean cuisines.



Cabin Categories

Category 1

Lower Deck: #102-103

These cozy 146-square-foot cabins feature two twin beds. They each have two porthole windows and a compact bathroom. Amenities include a hair dryer, safe, beach bag, bathrobe and slippers.



Category 2

Main Deck: #201, 203; Forecastle Deck: #301; Bridge Deck: #401

At an average of 259 square feet, these bright cabins feature a king-size bed and ample storage space—plenty of room for two. Select cabins have a sofa in addition to an armchair. Bathroom sizes vary across category 2 cabins; all optimize space for maximum comfort. Amenities include a hair dryer, safe, beach bag, tea/coffee facilities, bathrobe and slippers. Details about individual cabins can be found in the deck plan.



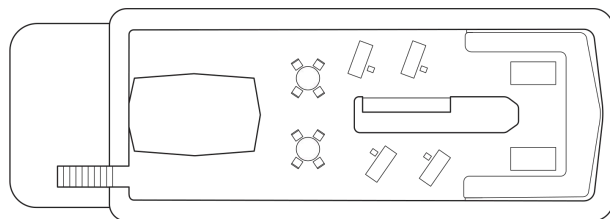
Category 3

Lower Deck: #101, 104, 105; Main Deck: #202, 204;
Forecastle Deck: #302, 303; Bridge Deck: #402

These light-filled cabins range from 269 to 363 square feet, averaging 317 square feet. They feature a king-size bed or two twin beds which can be configured as a king-size bed upon request. Most feature a sofa, armchair, coffee table, desk and ample storage and cupboard space. Depending on their deck location, these cabins have either portholes or large windows. The more spacious category 3 cabins offer a separate seating area and walk-in closet. Bathroom sizes vary, although the majority are large, and one has a soaking tub in addition to a shower. Amenities include a hair dryer, safe, beach bag, tea/coffee facilities, bathrobe and slippers. Details about individual cabins can be found in the deck plan.

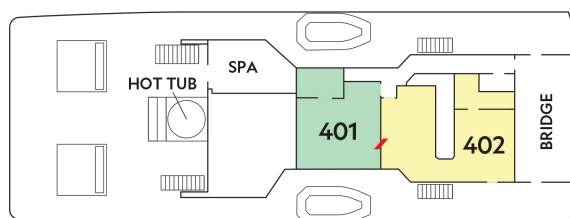


Sun Deck



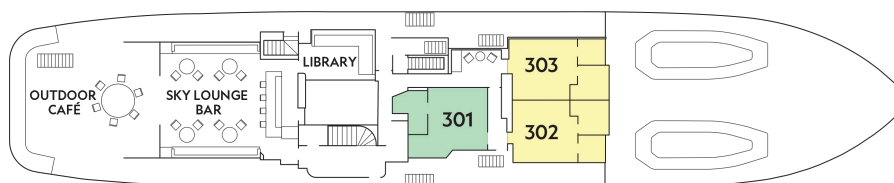
Bridge Deck

- Category 2
- Category 3



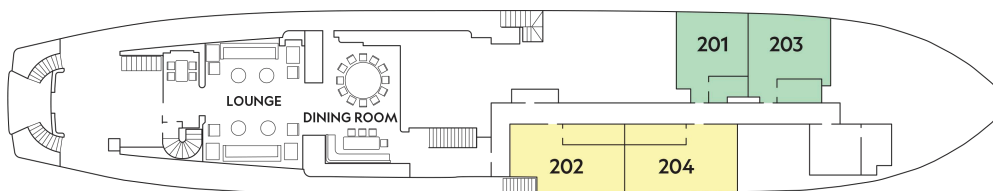
Forecastle Deck

- Category 2
- Category 3



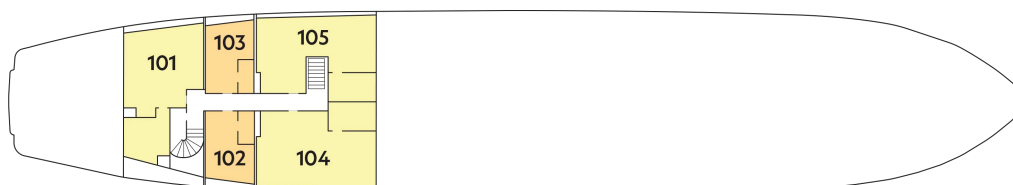
Main Deck

- Category 2
- Category 3



Lower Deck

- Category 1
- Category 3



Ship amenities

Inviting Public Spaces

Spread across five decks, an array of inviting public spaces beckon guests to relax at sea and convene with their fellow travelers. Indoors, a Library and TV Room, and two lounges are all well-appointed in the ship's soothing brass and ivory decor scheme. Outdoors, guests can enjoy al-fresco dining, an exercise area with ocean views, and an expansive sundeck with plush sunbeds ideal for sunset cocktails. Each private cabin lends a luxurious sense of home, offering the perfect respite after days filled with active adventures.



Tools for Exploration

Diving is offered on voyages aboard Aqua Blu at no extra cost. This option is limited to 10 experienced certified divers on a first-come-first-served basis. Non-divers can enjoy a range of other water activities, including snorkeling, swimming and kayaking. Call an Expedition Specialist for details.

Special Offers

to availability, and may not be combined with other offers. Call for details.

BRINGING THE KIDS

We believe sharing an expedition with children is a life-enhancing experience. Save \$500 for each child under the age of 18 on any departure. Not applicable on extensions or airfare. Call for details.

10% OFF BACK-TO-BACK VOYAGES

Save 10% on consecutive departures, applicable on voyage fares only and not valid on extensions or airfare. Valid for new bookings only, subject to availability, and may not be combined with other offers. Call for details.

CELEBRATE LIFE'S MILESTONES

Celebrate a milestone with a group of eight or more and enjoy a special amenity package including: 5% savings on voyage fares, custom group photo, US\$150 shipboard credit for the group, and other special gifts. Milestone celebration to be communicated at time of booking.

COMBINING OFFERS

Certain offers may be combinable, up to two savings opportunities, except where noted otherwise. For example, travel with a group of 8 or more on back-to-back expeditions, and take advantage of both savings.

SAVE 5% TRAVELING AS A GROUP

Save 5% when traveling as a group of eight or more people. Valid on voyage fares only and not applicable on extensions or airfare. Deposit, final payments, and cancellation policies for group travel vary from our regular policies. Valid for new bookings only, subject

Included in price

All accommodations aboard ship and in hotels per itinerary; meals, hors d'oeuvres, snacks and beverages aboard ship (excluding certain premium brands of alcohol); meals on land as indicated, accompanied by nonalcoholic beverages; excursions per itinerary, including scuba diving; park entrance fees and photography fees; arrival and departure airport transfers to and from recommended flights, as indicated in the itinerary; gratuities to all service staff, including guides and ship's crew; guidance and company of leading expedition staff; assistance of a National Geographic certified photo instructor; presentations by expedition staff; Wi-Fi aboard ship; complimentary reusable water bottle; and 24-hour access to lounge and other shared spaces onboard ship. Unused services or items included in our programs are non-refundable.

Not included in price

Airfare*; additional hotel nights; spa treatments, Wi-Fi in hotels (if not included by hotels), and phone services (except when indicated as included); travel protection plans; passport, visa, and immigration fees; and items of a personal nature, such as souvenirs, and laundry in hotels.

*Recommended flight costs include flight(s) that take place during the date range of your trip to transport travelers from one itinerary destination to another. This cost also includes ground transportation, luggage transfer, and airport assistance. If you prefer to arrange your own flights privately, have alternate means of transport, or wish to modify at a later time, please contact an Expedition Specialist. Additional costs associated with medical services outside onboard physician consultation.

Travel protection plan

We strongly recommend our guests to take advantage of our Travel Protection Plan. This plan offers comprehensive coverage to protect you from cancellation fees, costs incurred due to trip delays/interruption, damage or loss of baggage, medical assistance, and evacuation during your travels. Our Travel Protection Plan is available for U.S. residents only, and may be purchased any time prior to final payment due date, Travel Protection premiums are non-refundable once plan is purchased. Learn more about our

Travel Protection "Plus" Plan: <https://www.expeditions.com/terms-conditions/travel-protection-plan/>

Cancellation policy

Review our cancellation policy: <https://www.expeditions.com/cancellation-policy/>