



Amazon, Peru, South America & River Cruises  
13° 31' S 71° 58' W

## Exploring Peru: Machu Picchu and the Amazon

Experience the best of Peru, with the Amazon and Machu Picchu, on this Wild Peru Escape. Start in Lima, then stay two nights at Machu Picchu and spend a full day exploring the iconic sanctuary. Next, explore Cusco, imperial capital of the Inca. Then, fly to Iquitos and the Amazon for a five-day voyage aboard *Delfin II* or *Delfin III* in Peru's Pacaya-Samiria National Reserve.

From  
**\$ 9,498** / per person  
Does not include flights



### DATES

Jan, Feb, Mar,  
Apr, May, Jun,  
Jul, Aug, Sep,  
Nov and Dec



### DURATION

9 Days



### SHIPS

*Delfin III*



### STARTS AT

Lima, Peru



### ENDS AT

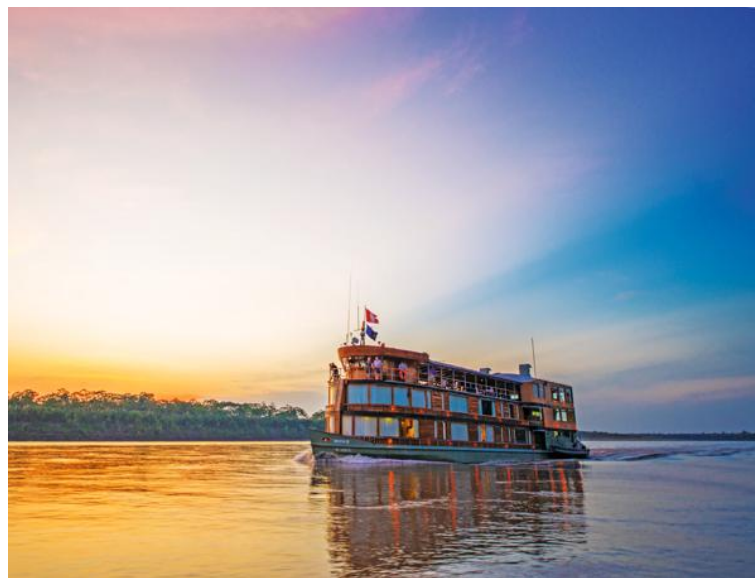
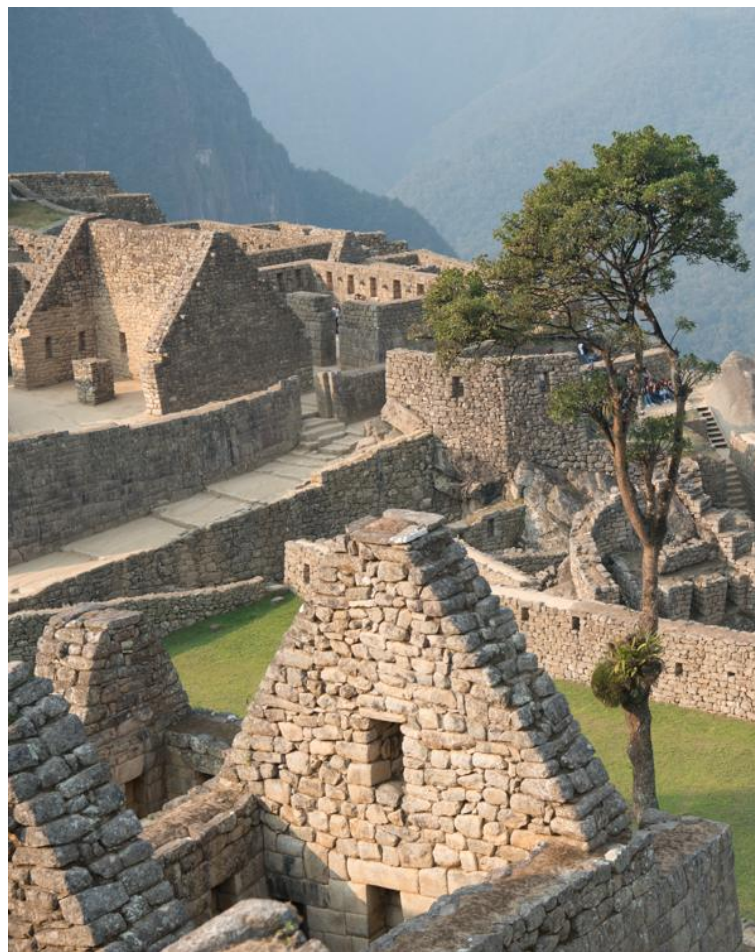
Lima, Peru

**NOTE:** Beginning in 2026 this expedition is 10 days long. Passport information to secure Machu Picchu tickets is needed at time of booking due to an increase in demand. Bookings within 120 days are subject to confirmation of availability.



## Highlights

- ★ Spend a full day exploring the fabled Machu Picchu archaeological site with hand-picked guides
- ★ Discover the cobbled streets and monuments of Cusco, imperial capital of the Inca
- ★ Journey to Iquitos and the Amazon for a river voyage, venturing out daily in nimble skiffs and kayaks to explore tributaries brimming with wildlife
- ★ Explore the lush forest of Pacaya-Samiria National Reserve with a team of experienced local naturalists







## Day by day

### DAY 1

#### Lima, Peru

Arrive in Lima, Peru's thriving capital, and transfer to the convenient Wyndham Grand Costa del Sol Lima Airport hotel, located at the airport. Most international flights arrive in the late evening. Opt to arrive early for a [Lima pre-voyage extension](#), staying at the iconic Country Club Lima Hotel. The extension adds just a day to the expedition and gives you a chance to rest, relax and see this UNESCO World Heritage designated city.

**Arrival Time:** Anytime.

**Arrival City:** Lima, Peru

### ◇ DAY 2

#### Lima / Cusco / Sacred Valley

Fly to Cusco this morning and continue by land to Pisac, known for its market and the archaeological site that rises above the town. After lunch, continue through the Sacred Valley and check-in at Tambo del Inka, your hotel for the next two nights.

**Meals included:** breakfast, lunch, dinner

### ◇ DAY 3

#### Machu Picchu

Drive to Ollantaytambo, where you'll admire the archaeological site and board the scenic train traveling along the Urubamba River to Machu Picchu. Perched at less than 8,000 feet in the "eyebrow of the jungle," the sanctuary is surrounded by tropical mountain forest with diverse birds and orchids. Linger after daytime visitors have departed, returning to Machu Picchu Pueblo for the train ride back to the Sacred Valley and Tambo del Inka this evening. Dinner is served aboard the first-class

train.

**Meals included:** breakfast, lunch, dinner

### ◇ DAY 4

#### Sacred Valley / Cusco

Departing your hotel, drive through the Sacred Valley to Chinchero, a typical Andean village, where National Geographic Grantee Nilda Callañaupa puts on a family-style lunch and a demonstration of Inca weaving traditions with the women in her cooperative. Continue to Cusco and check in at the Palacio del Inka in the historic heart of the city. Dinner is on your own tonight to explore the many options.

**Meals included:** breakfast, lunch

### ◇ DAY 5

#### Cusco

This morning drive the short distance to Sacsayhuamán, the emblematic site standing over the city from the northern outskirts. Like Machu Picchu, the ceremonial center was built during the reign of Inka Pacachuti. Opt to return to Cusco on foot, walking through the San Blas neighborhood. Tour the ornate 17th-century cathedral and Plaza de Armas, the sacred Inca Temple of the Sun and other treasures of this burgeoning cultural capital and center of the Inca universe, where colonial buildings stand atop Inca foundations. Enjoy lunch in the city center with time to stroll the streets and explore on your own. Dinner is on your own to delve into the culinary scene in this burgeoning cultural center.

**Meals included:** breakfast, lunch

### ◇ DAY 6

#### Cusco / Lima / Iquitos / Nauta / Embark Ship

After breakfast, fly via Lima to Iquitos in the Peruvian Amazon basin, and continue overland to the riverside village of Nauta, where the *Delfin III* awaits. Settle into your cabin and gather for a welcome dinner of fine Peruvian cuisine on board. Tonight, step out on deck to gaze at the magnificent Amazon night sky.

**Meals included:** breakfast, lunch, dinner

#### ◇ DAYS 7-9

### Exploring the Pacaya-Samiria Reserve

Explore the Pacaya-Samiria National Reserve, a pristine swath of jungle stretching more than five million acres and harboring some of the Amazon's most fascinating flora and fauna. The reserve is bordered by the Marañón and the Ucayali, two powerful rivers that converge to create the famed Amazon, which floods annually with nutrient-rich waters and is known locally as the Mirrored Forest for the reflections created by its seasonal glassy water.

Set out into this remarkable wilderness on daily excursions by skiff, kayak and, when the water level permits, hikes on dry land. Look for sloths and monkeys, including variably colored saddleback tamarins, noisy howlers and shaggy-tailed monk saki monkeys. Watch for an astounding variety of birds, from tanagers and hummingbirds to parrots and scarlet macaws. In the river, look for massive paiche fish, the Amazon's largest; rare pink dolphins; and the infamous piranhas.

One of the unexpected joys of traveling in the Upper Amazon of Peru is interacting with the local *ribereños*, the traditional people who live on the riverbanks. Visit the local non-profit Minga Peru, including a program of handicraft development, radio broadcasts, women's health initiatives and efforts in sustainable farming.

**Meals included:** breakfast, lunch, dinner

#### ■ DAY 10

### Nauta / Disembark Ship / Iquitos / Lima

Disembark in Nauta, stopping at the Amazon Rescue Center on the drive to Iquitos. Fly to Lima and connect for flights home. Ask your expedition specialist about options to extend your stay, including an overnight at the Wyndham Grand Costa del Sol Lima Airport hotel.

**Departure Time:** After 9:00 p.m. local time.

**Departure City:** Lima.

**Meals included:** breakfast, lunch

2026 (Land + Delfin III)

Lima, Peru → Lima, Peru

Alternative Routes

Visit [Expeditions.com](http://Expeditions.com) for more information.

2026 Departure Dates

Aboard *Delfin III*

01 Jan		
05 Feb	12 Feb	
05 Mar		
23 Apr		
21 May		
04 Jun		
23 Jul		
13 Aug	20 Aug	
10 Sep		
05 Nov	26 Nov	
03 Dec		

2026 Departure Dates

05 Jan, 09 Feb, 23 Feb, 09 Mar, 27 Apr,  
08 Jun, 27 Jul, 24 Aug, 14 Sep



## ***Delfin III***

---

**Guests**

42

**Suites**

21

---

### **Explore in tropical style on this elegant 42-guest, all-suite river ship**

With just 21 suites in four categories, all with floor-to-ceiling windows, Delfin III sails the Ucayali and Marañón rivers to the confluence of the mighty Amazon in Peru's Upper Amazon year-round with style. Locally built and carrying 30 marvelous crew, most from the region, this elegant ship was inducted into the Relais & Châteaux group, recognizing its commitment to local nature and culture, and its exquisite Amazonian-Peruvian cuisine.

The observation deck, with an open-air Whirlpool hot tub at the stern, has a large lounge and bar accommodating all guests for recaps, presentations, and to take in the passing scenery. Everyone gathers with open, relaxed seating for meals aboard in the spacious dining room. The ship is sustainably furnished featuring hand-made furniture and art and textiles from the surrounding communities that are supported by our guests.

Choose from four categories of large suites aboard: the singular Andes Suite, measuring 597 square feet, with 180-degree windows at the bow to take in the surroundings; two corner Amazon Suites; 10 Upper Suites; and 8 Suites, with en suite facilities, comfortable chair and desk.





# Ship amenities

## Public Areas

Enjoy sweeping views in spacious public spaces including an air-conditioned presentation room and lounge, an open-air sun deck with whirlpool hot tub, small exercise room and wellness spa, and a dining room with a 270-degree panorama. Visit the open bridge, where you are welcome anytime.



## Dining

Meals are artfully prepared, featuring sustainable, locally sourced cuisine. The dining room accommodates all guests for a single seating. Enjoy complimentary beer, wine, cocktails, and spirits aboard the ship (except certain super premium brands which are available for purchase).

## 21 Outside Suites

The spacious, air-conditioned guest suites on two decks offer exceptional river views with floor-to-ceiling windows, including the Andes Suite with 180-degree views and two Amazon Suites with corner windows. Each spacious suite is a serene oasis, redolent of tropical wood and with local textiles and art. The Amazon Suites can be reserved as a triple, with a king and an added twin bed.



## Expedition Tools

Explore the tributaries that feed these rivers and search for wildlife aboard 15-person skiffs, which feature individual seats with cushions and plenty of legroom. Kayaks offer a quiet way to explore remote, seldom-visited side streams.

## Special Features

The Relais & Chateaux designation reflected the food, service and commitment to conservation. Get a true “taste of the region” as much of the food is grown in the surrounding rainforest by local farmers who maintain sustainable agricultural practices. Naturalists are from the area, and you travel with a veteran Lindblad Expeditions National Geographic Expedition Leader and an exclusive certified naturalist-photo instructor.

# Cabin Categories

## Suite

**Main Deck: #103-110**

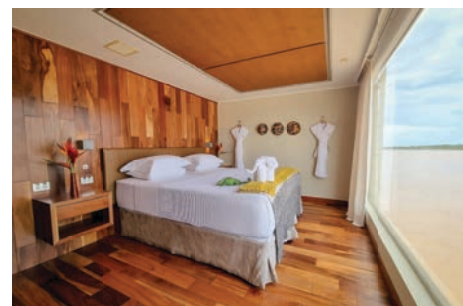
Suites on this deck measure 237 sq.ft. and feature floor-to-ceiling windows for stunning views of the passing life along the river. Includes two twin beds that can convert to a king-size bed, bedside tables with reading lamps, large window, comfortable sitting area with sofa. Bathrooms are spacious with a large shower, and large mirror vanity.



## Upper Suite

**Upper Deck: #202-211**

Upper Suites on this deck measure 237 sq.ft. and feature floor-to-ceiling windows for stunning views of the passing life along the river. Includes two twin beds that can convert to a king-size bed, bedside tables with reading lamps, large window, comfortable sitting area with sofa. Bathrooms are spacious with a large shower, and large mirror vanity.



## Amazon Suite

**Main Deck: #101-102**

Amazon Suites are 270 sq. ft., with oversized windows that provide incredible 90-degree corner views overlooking the river. Configured with a fixed king bed, these suites accommodate triple occupancy in an added twin. Amenities include bedside tables and reading light, ample closet, small sofa chair, and desk. Bathrooms are spacious with a large shower, separate toilet, and sink area.



## Andes Suite

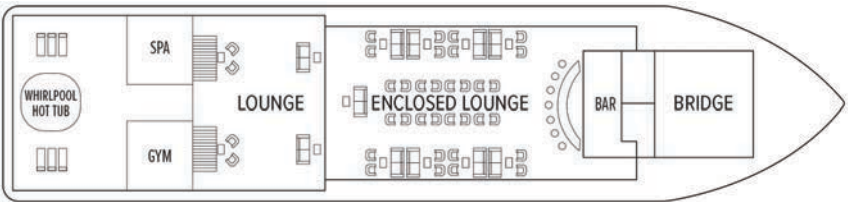
**Upper Deck: #201**

The Andes Suite measures 597 sq.ft. and features a king bed with breathtaking views of the expansive river through forward-facing, 180-degree floor-to-ceiling windows. Amenities include bedside tables with reading lamps, comfortable sitting area with sofa. Bathrooms are spacious with a large shower, and separate bathtub and large mirror with double vanity.



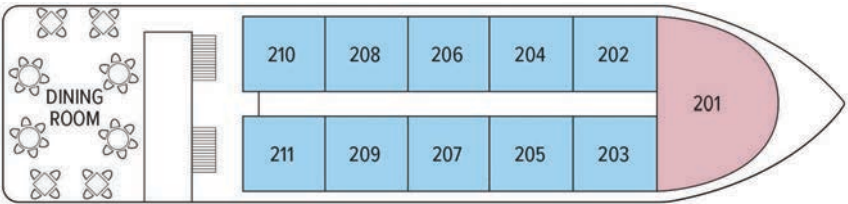
# Deck Plans

## Observation Deck



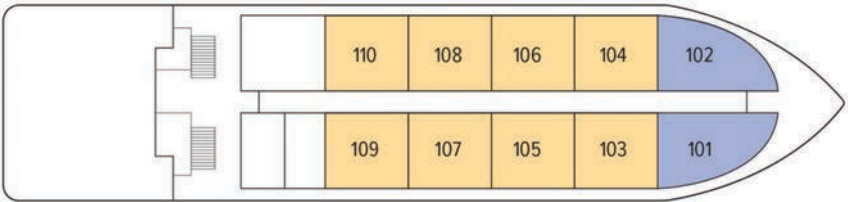
## Upper Deck

- Upper Suite
- Andes Suite



## Main Deck

- Suite
- Amazon Suite





## Special Offers

### SPECIAL SAVINGS

Receive savings of up to 20% on select voyages as indicated on our special offer page. Applicable savings will be deducted from cabin fare after any additional applicable savings with the purchase of cabin fare. Receive 50% off the deposit due at the time of booking on select 2026 and 2027 voyages outside of final payment. Remaining deposit balance is due at the time of final payment. Additional restrictions may apply. Offers valid on new bookings only for select 2026 and 2027 departures, subject to availability and offer may be withdrawn at any time without prior notice, not applicable on airfare or extensions, and may not be combined with other offers. Call for details.

### COMPLIMENTARY TRANSFERS

We include arrival and departure airport transfers for all guests in Ecuador and Peru, whether by group, hotel shuttle, or private transfer (please share your flight information two weeks before your departure). In addition, we provide transfers for guests who are booked on ticketed internal flights from Guayaquil, Quito, or Lima to and from the Galapagos, Cusco or Iquitos.

### SAVE 5% TRAVELING AS A GROUP

Save 5% when traveling as a group of eight or more people. Valid on voyage fares only and not applicable on extensions or airfare. Deposit, final payments, and cancellation policies for group travel vary from our regular policies. Valid for new bookings only, subject to availability, and may not be combined with other offers. Call for details.

### CELEBRATE LIFE'S MILESTONES

Celebrate a milestone with a group of eight or more and enjoy a special amenity package including: 5% savings on voyage fares, custom group photo, US\$150 shipboard credit for the group, and other special gifts. Milestone celebration to be communicated at time of booking.

### 10% OFF BACK-TO-BACK VOYAGES

Save 10% on consecutive departures, applicable on voyage fares only and not valid on extensions or airfare. Valid for new bookings only, subject to availability, and may not be combined with other offers. Call for details.

### BRINGING THE KIDS

We believe sharing an expedition with children is a life-enhancing experience. Save \$500 for each child under the age of 18 on any departure. Not applicable on extensions or airfare. Call for details.

### COMBINING OFFERS

Certain offers may be combinable, up to two savings opportunities, except where noted otherwise. For example, travel with a group of 8 or more on back-to-back expeditions, and take advantage of both savings.

## Included in price

All accommodations aboard ship or in hotels per itinerary; all meals as indicated in the itinerary, both aboard and onshore; free beer, wine, cocktails liquors and spirits aboard the ship (except certain premium brands which are available for purchase; hors d'oeuvres, non-alcoholic beverages, and filtered water; excursions; arrival transfers are included for hotel arrangements made through National Geographic-Lindblad Expeditions; gratuities in Peru to local guides, drivers and tour escort exploration tools curated to destination, such as kayaks and skiffs; guidance and company of our leading expedition staff; presentations by expedition staff and expert guest speakers; assistance by the Lindblad Expeditions-National Geographic Certified Photo Instructor; Wi-Fi aboard ship; complimentary reusable water bottle; onboard physician consultations; 24-hour access to exercise equipment; 24-hour access to lounges, observation decks, library, and other shared spaces; park and site entrance fees, special access permits, and port taxes. Unused services or items included in our programs are non-refundable.

## Not included in price

Airfare\* (except flights when indicated as included); pre- and post-expedition extensions; additional hotel nights (except when indicated as included); crew gratuities; private transfers; laundry, spa treatments, and phone services (except when indicated as included); travel protection plans; and passport, visa, and immigration fees.

\*Recommended flight costs include flight(s) that take place during the date range of your trip to transport travelers from one itinerary destination to another. This cost also includes ground transportation, luggage transfer, and airport assistance. If you prefer to arrange your own flights privately, have alternate means of transport, or wish to modify at a later time, please contact an Expedition Specialist at 1.833.400.0831

Additional costs associated with medical services outside onboard physician consultation.

coverage to protect you from cancellation fees, costs incurred due to trip delays/interruption, damage or loss of baggage, medical assistance, and evacuation during your travels. Our Travel Protection Plan is available for U.S. residents only, and may be purchased any time prior to final payment due date, Travel Protection premiums are non-refundable once plan is purchased. Learn more about our Travel Protection "Plus" Plan: <https://www.expeditions.com/terms-conditions/travel-protection-plan/>

## Cancellation policy

Review our cancellation policy: <https://www.expeditions.com/cancellation-policy/>

## Travel protection plan

We strongly recommend our guests to take advantage of our Travel Protection Plan. This plan offers comprehensive