







Europe & Atlantic Isles
 35° 45' N 5° 50' W

Spain, Portugal and Morocco: Atlantic Horizons

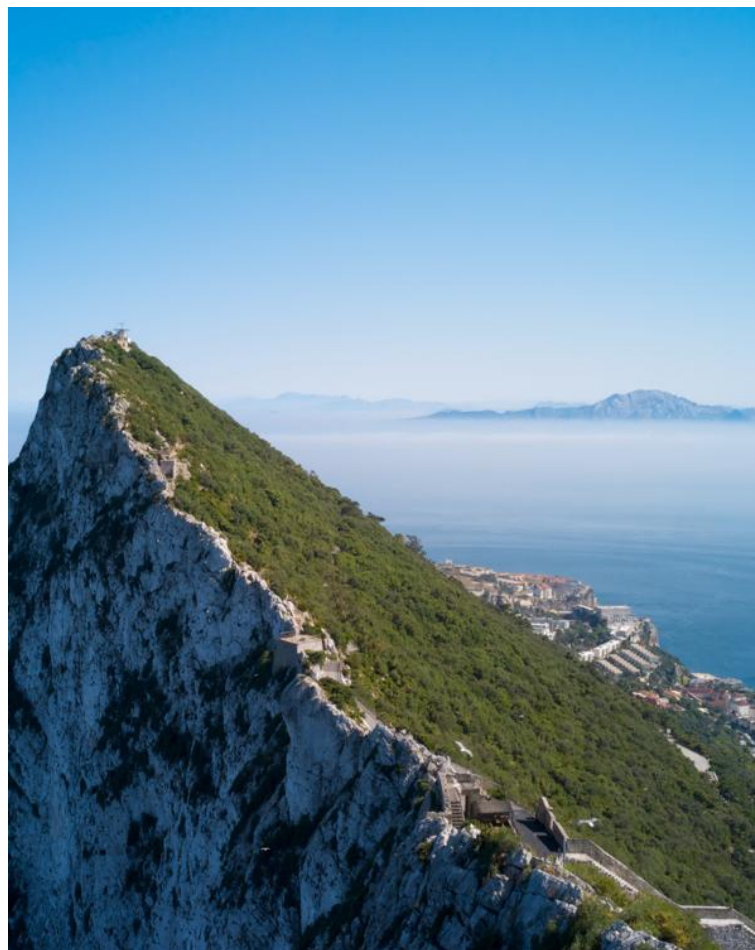
Embark on a journey across seas and centuries, sailing from the artistic heart of Barcelona to the volcanic islands of the Azores. Along the way, encounter the ancient legacies of the Mediterranean, the Moorish traditions that shaped North Africa and Iberia, the coastal charms of Portugal and the Azores’ otherworldly beauty. Explore storied kasbahs, idyllic villages and rugged coastlines—sometimes with expert guides, other times at your own pace—and discover how centuries of history, cuisine and culture have left their mark on these storied shores.

From
£10,305 / per person
 Does not include flights

 DATES Jun	 DURATION 13 Days
 SHIPS <i>National Geographic Orion</i>	
 STARTS AT Barcelona, Spain	  ENDS AT Ponta Delgada, Azores

Highlights

- ★ Sail the famed Strait of Gibraltar, the gateway between Africa and Europe, taking in the view from the open deck of *National Geographic Orion*
- ★ Stroll Cartagena’s magnificent Roman Theatre, then set out on a tapas tour to sample traditional local dishes
- ★ Experience Lisbon’s charm as you marvel at its architectural masterpieces and listen to the soulful sounds of Fado music in the Alfama, the city’s oldest neighborhood
- ★ Wander Tangier’s labyrinthine medina and climb to the legendary kasbah





Day by day

DAY 1

Barcelona, Spain / Embark Ship

Arrive in Barcelona and transfer to a shared hospitality space. This afternoon, explore the city at your own pace, enjoying its architectural masterpieces, the lively street rhythms of Las Ramblas or the beautiful views atop Montjuic. Embark the ship in the late afternoon and set off on your journey.

Meals included: dinner

DAY 2

Columbretes Islands

The ship anchors near the city of Castellón on mainland Spain. From here, enjoy water activities in the Columbretes Islands, an archipelago 30 miles off the coast. The islands are a haven for wildlife, offering opportunities to observe endemic species such as Andouin’s gull, Eleonora’s falcon and Scopoli’s shearwater.

Meals included: breakfast, lunch, dinner

DAY 3

Valencia

Begin your journey through Valencia with a visit to its majestic cathedral, home to the revered Holy Chalice—believed by many to be the cup used by Jesus at the Last Supper. Savor an authentic paella, the city’s signature dish, before exploring the City of Arts and Sciences, a futuristic complex where science, culture and architecture converge. Later, set out independently to wander the winding streets of the old quarter, browse the bustling Mercado Central or take in world-class art at the Palau de les Arts.

Meals included: breakfast, lunch, dinner

DAY 4

Cartagena

Uncover Cartagena’s remarkable history, from its Roman foundations to its role as a Mediterranean stronghold. Stand before the magnificent Roman Theatre, admire the remains of the Augustus Temple and see the imposing city walls—a UNESCO World Heritage site.

Later, set out on a tapas tour of the city, weaving your way through narrow lanes and bustling terraces as you taste local delicacies like *caldero del mar menor*, a traditional fisherman’s rice dish.

Meals included: breakfast, lunch, dinner

DAY 5

Málaga

Málaga is one of Spain’s oldest cities—a vibrant coastal hub where layers of ancient history blend with contemporary culture. Explore the Alcazaba, a remarkably well-preserved Moorish fortress overlooking the sea, and climb to the Castillo de Gibralfaro, the 14th-century stronghold that once guarded both the Alcazaba and the city below.

Meals included: breakfast, lunch, dinner

DAY 6

Tangier, Morocco

Tangier lies just across the Strait of Gibraltar from Spain and has long been a gateway between Africa and Europe—a true cultural crossroads. Stroll the winding streets of its medina, ascend to the city’s legendary kasbah or visit the American Legation Museum, a symbol of centuries-old diplomacy, and the only U.S. National Historic Landmark located outside the country.

Meals included: breakfast, lunch, dinner

◇ DAY 7

Algarve Region, Portugal

Enter Portugal in the Algarve, the sun-drenched southern coast renowned for its dramatic cliffs, golden beaches and whitewashed villages. Choose from a variety of activities: kayak in tranquil waters, spot dolphins along the coast, set out on a scenic afternoon hike or wander the cobblestoned streets of a coastal town that embodies the Algarve’s timeless charm.

Meals included: breakfast, lunch, dinner

◇ DAY 8

Lisbon

Arrive in Lisbon, Portugal’s captivating capital, where historic architecture, timeless traditions and scenic beauty converge. Visit the iconic Belém Tower and the ornate Jerónimos Monastery, then wander the winding lanes of Alfama—the city’s oldest quarter—where the soulful sound of Fado drifts through the air.

Meals included: breakfast, lunch, dinner

◇ DAYS 9-11

At Sea

As you sail toward the Azores, enjoy the ship’s premium amenities and onboard experiences. Step onto the Bridge to watch for wildlife and observe the captain navigate the ship, unwind with a massage from the wellness specialist or attend naturalist talks on your destination.

Meals included: breakfast, lunch, dinner

◇ DAY 12

Ponta Delgada, São Miguel, Azores

Venture into the lush Furnas Valley and enjoy a traditional Azorean specialty for lunch: *cozido*, a hearty stew of meats and vegetables slow-cooked underground by volcanic steam. Weather

permitting, set out with local spotters on a catamaran in search of cetaceans.

Meals included: breakfast, lunch, dinner

■ DAY 13

Ponta Delgada / Disembark Ship

Disembark in Ponta Delgada and transfer to the airport for flights home.

Meals included: breakfast

Expedition

Barcelona, Spain → Ponta Delgada, Azores

2027 DEPARTURE DATES

Aboard *National Geographic Orion*

25 Jun				
--------	--	--	--	--



National Geographic Orion

GUESTS

102

CABINS

53

Joining the Lindblad fleet in 2013, the state-of-the-art *National Geographic Orion* serves as a luxurious base camp for voyages to the far-flung corners of the planet.

Built in Germany by the Cassens shipyard, the 102-guest *National Geographic Orion* was created with a high ice class to be able to venture safely into polar regions. A ship of her size is seldom built with such ice-cutting ability, which makes her a rarity. She is yacht-scale, yet rugged enough to venture far afield, making her a perfect addition to the Lindblad fleet, which she joined in 2013. Her size and nimbleness offer the perfect combination of safety and liberty to voyage untrammelled locations. In fact, *National Geographic Orion* currently holds the distinction of having sailed further south than any other Lindblad vessel.

Her menu, created by famed Australian chef, Serge Dansereau, owner of Sydney's acclaimed Bather's Pavilion restaurant, enormously popular with *National Geographic Orion's* guests, so impressed Sven Lindblad, that Serge, a chef-owner who shared the Lindblad commitment to serving local and sustainable food, was enlisted to design the dining program for the entire National Geographic-Lindblad Expeditions fleet.

National Geographic Orion is gracious and intimate, with a rewarding, almost clubby feeling. Of her many amenities and features, the most appealing is her outside deck space which beckons in the balmy reaches of the Pacific, and on those days in Antarctica when the midnight sun and the spectacle of the ice makes going indoors, let alone going to bed, impossible.



Cabin Categories

Category 1

MAIN DECK #316, 318-321

Cabins feature a luminous oval window and configurable beds: two single beds that can be converted to a queen. An armchair, reading lamps, a flat screen TV, two bedside tables, coffee table, desk and climate controls complete the amenities. Marble bathrooms are generously sized and include a spacious shower stall with a glass door.



Category 2

MAIN DECK #302-312, 314, 315, 317

Cabins feature a luminous oval window and configurable beds: two single beds that can be converted to a queen. An armchair, reading lamps, a flat screen TV, bedside table, coffee table, desk and climate controls complete the amenities. Marble bathrooms are generously sized and include a spacious shower stall with a glass door.



Category 3

UPPER DECK #401-412, 414-419

These suites feature a sitting area with a large window, a sofa—except slightly smaller #401 & #402—an armchair or two, writing/laptop desk, reading lamps, coffee table, flat screen TV, bedside table and climate controls. Beds are configurable (call for details). Marble bathrooms include a spacious shower stall with a glass door.



Category 4

BRIDGE DECK #511, 515

These two suites feature separate sleeping and sitting areas, with a chair and armchair, coffee table, and a two-cushion sofa facing an expansive window. Beds are configurable (call for details). Ample storage, reading lamps, a flat screen TV and climate controls complete the amenities. Marble bathrooms are generously sized and include a spacious shower stall with a glass door.



Category 5

BRIDGE DECK #501, 503-506, 508

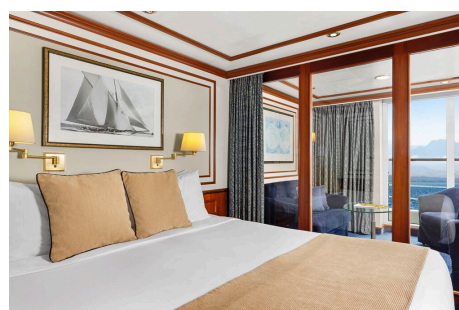
These spacious suites feature open living areas and sliding glass doors opening to a shared French balcony. Beds are configurable (call for details). A separate sitting area with armchairs and a sofa, a writing/laptop desk, coffee table, well-placed reading lamps, a flat screen TV and climate controls complete the decor. Marble bathrooms are generously sized and include a spacious shower stall with a glass door.



Category 6

BRIDGE DECK #502, 507, 509*, 510

These large, elegant suites feature a French balcony, except for #509 which has double windows. Each provides a separate living area with a sofa and two armchairs, coffee table, except for #502, which uniquely offers a 'soaking tub with a view' in addition to a shower stall and expansive vanity. All cabins have reading lamps, a flat screen TV and climate controls. Marble bathrooms are generously sized and include a spacious shower stall with a glass door.



Category 1 Solo

MAIN DECK #301, 322, 323

These solo cabins feature a window or two portholes, a queen-size bed, except for #301 which has a double bed, writing desk and chair, climate controls, reading lamps, coffee table, two bedside tables and a TV. Marble bathrooms are generously sized and include a roomy shower stall with a glass door.



Category 3 Solo

UPPER DECK #512

This solo suite features two single beds and two large windows, plus two armchairs and a small table, reading lamps, coffee table a flat screen TV and climate controls. The marble bathroom is generously sized and includes a spacious shower stall with a glass door.



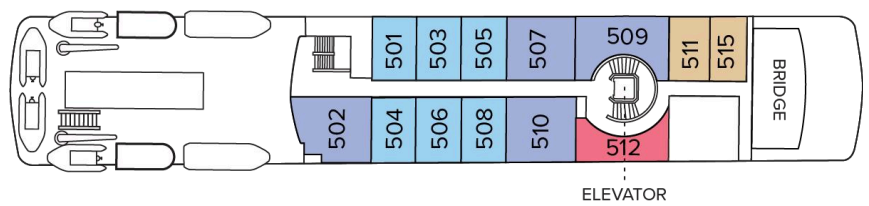
Deck Plans

Observation Deck



Bridge Deck

- Category 4
- Category 5
- Category 6
- Category 3 Solo



Upper Deck

- Category 3



Main Deck

- Category 1
- Category 2
- Category 1 Solo



Expedition Deck



Ship Amenities

Public Areas

Reception; two dining areas; lounge with bar and state-of-the-art presentation facilities; OM System photo locker; sundeck with a whirlpool hot tub that doubles as a plunge pool in warm climates; observation lounge and library; global gallery; a marina platform; plus open access to the Bridge, the Captain, officers and on-duty wildlife spotters.

Meals

Meals are served in the dining room, or weather permitting, the outdoor café, at a single seating with unassigned tables for an informal atmosphere and easy mingling. Menus feature sustainable choices, local where possible.

Cabins

All cabins face outside with windows or portholes, private bathroom, and climate controls. Cabins feature a coffee table, lounge chair, desk, phone, TV with on demand entertainment, multiple outlets and USB, mini refrigerator, and safe. Luxury linens and pillows. Botanically inspired shampoo, conditioner, shower gel and lotion are all available in cabin bathrooms, as well as an Expedition Essential Kit. Hair dryers, complimentary insulated water bottles and a National Geographic Atlas are available in each cabin.

Expedition Equipment

Zodiac landing craft, a fleet of double kayaks, a crow's nest camera, a hydrophone, underwater video cameras, video microscope and an ROV. Plus, for South Pacific voyages: snorkeling gear for all guests, scuba gear for a number of pre-qualified guests, stand-up paddleboards, glass-bottom Zodiac and splash-cam.

Special Features

A full-time doctor, undersea specialist, National Geographic photographer and National Geographic-Lindblad Expeditions certified photo instructor. A central staircase and elevator reach all decks. Enjoy daily teatime and the smoothies served after the sunrise stretch sessions on the sundeck in Polynesia.

Wellness

A fitness center, LEXspa treatment room and sauna, staffed by wellness specialists.

Self-Disinfecting Ships

ACT Clean Coat™ is a light-activated, self-disinfecting cleaning process that continuously breaks down viruses, bacteria, mold, and airborne allergens across all ship surfaces. This non-toxic, chemical-free system also helps us save over one million gallons of water each year in our cleaning procedures.

Special Offers

10% OFF BACK-TO-BACK VOYAGES

Save 10% on consecutive departures, applicable on voyage fares only and not valid on extensions or airfare. Valid for new bookings only, subject to availability, and may not be combined with other offers. Call for details.

COMBINING OFFERS

Certain offers may be combinable, up to two savings opportunities, except where noted otherwise.

For example, travel with a group of 8 or more on back-to-back expeditions, and take advantage of both savings.

CELEBRATE LIFE'S MILESTONES

Celebrate a milestone with a group of eight or more and enjoy a special amenity package including: 5% savings on voyage fares, custom group photo, US\$150 shipboard credit for the group, and other special gifts. Milestone celebration to be communicated at time of booking.

SAVE 5% TRAVELING AS A GROUP

Save 5% when traveling as a group of 8 or more people. Valid for new bookings only on select departures, subject to availability, not applicable on extensions, and may not be combined with other offers. Call for details.

TRAVEL PROTECTION PLAN

We strongly recommend our guests to take advantage of our Travel Protection Plan. This plan offers comprehensive coverage to protect you from cancellation fees, costs incurred due to trip delays/interruption, damage or loss of baggage, medical assistance, and evacuation during your travels. Our Travel Protection Plan is available for U.S. residents only, and may be purchased any time prior to final payment due date, Travel Protection premiums are non-refundable once plan is purchased. Learn more about our Travel Protection "Plus" Plan: <https://www.expeditions.com/terms-conditions/travel-protection-plan/>

CANCELLATION POLICY

Review our cancellation policy: <https://www.expeditions.com/cancellation-policy/>