








Europe & Atlantic Isles  
 37° 44' N 25° 40' W

# Islands of the Azores: Basalt Peaks to Volcanic Vineyards

Towering basalt peaks, steaming hot springs, emerald-green pastures, a rich seafaring legacy, and world-class wines and cuisine—this is the vibrant spirit of the Azores, Portugal’s dramatically beautiful Atlantic archipelago. Journey into the North Atlantic to discover these hidden isles, each with its own distinct rhythm. Hike along crater lakes and rugged cliffs, and encounter Azorean communities whose culture reflects centuries of resilience, ingenuity and abundance.

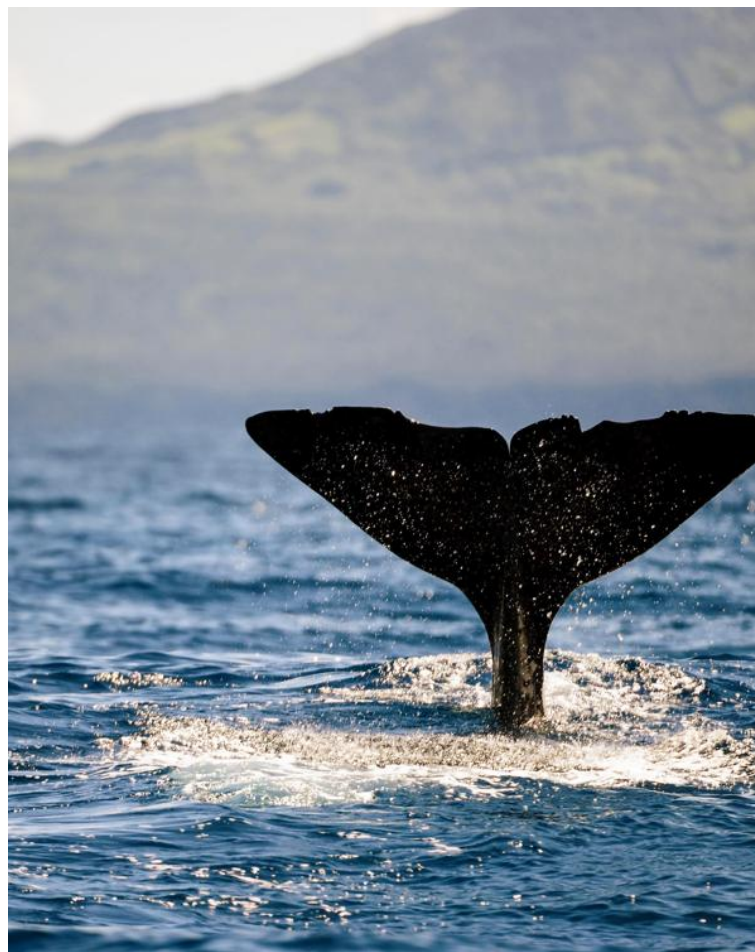
From  
**£6,947** / per person  
 Does not include flights

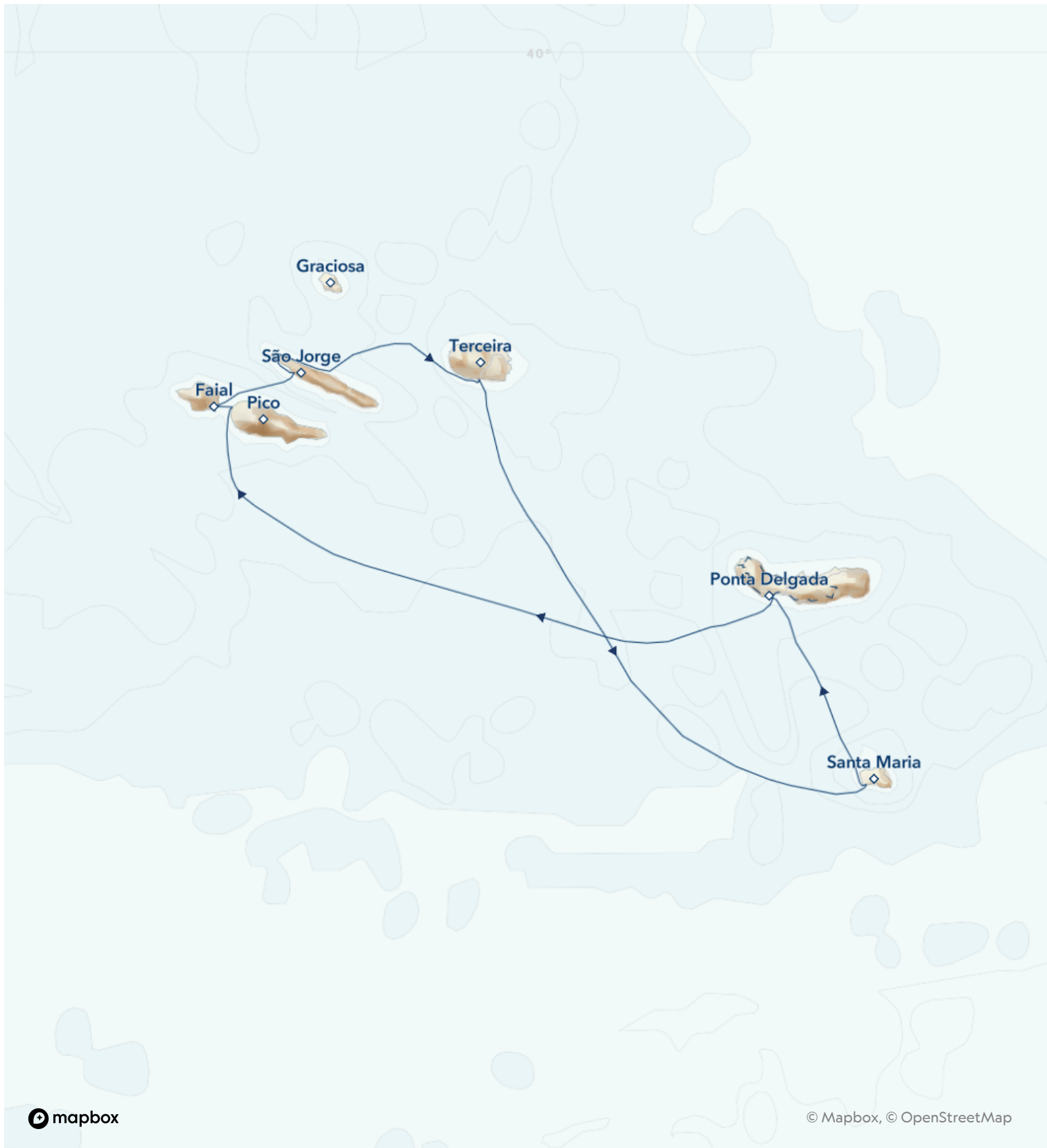
 <b>DATES</b> Jul	 <b>DURATION</b> 8 Days
 <b>SHIPS</b> <i>National Geographic Orion</i>	
 <b>STARTS AT</b> Ponta Delgada, Azores, Portugal	 <b>ENDS AT</b> Ponta Delgada, Azores, Portugal

**Itinerary note:** Routing may vary and stops may be subject to modification and/or permitting.

## Highlights

- ★ Search for marine life, follow scenic hiking trails and learn of the volcanic history unique to the Azores
- ★ Soak up Azorean culture, sampling local wine and cheese, and dine on a delectable local specialty: a stew cooked underground by volcanic heat
- ★ Discover the varied past and the stories of explorers, whalers and conquerors who all had a part in weaving the tapestry of island history
- ★ Experience the commitment the locals have to sustainable growth and protecting the natural beauty and ecosystems of the archipelago





# Day by day

## ■ DAY 1

### Ponta Delgada, Azores, Portugal / Embark Ship

Arrive in Ponta Delgada, the charming capital of the Azores. Transfer from the airport to the city and spend the day at your own pace exploring the sights, sounds and tastes of this island capital. Check in with the hospitality desk this afternoon before embarking the ship.

Meals included: dinner

## ◇ DAY 2

### Pico / Faial

The tallest mountain on the Atlantic Ridge, the long dormant Ponta do Pico is a defining feature of this beautiful island whose claims to fame are whaling history and wine. Visit one of the island's former whaling villages and learn about the importance of the whaling industry to these islands. Travel to the wine region, a UNESCO World Heritage site, and see the unlikely lava stone corrals that protect the precious vines. Enjoy a tasting of these very special wines.

Sail to the island of Faial in time to raise a glass at Peter Café Sport, a legendary pub where sea adventurers historically dropped off their mail.

Meals included: breakfast, lunch, dinner

## ◇ DAY 3

### Faial

Head to Capelinhos, where you can see how dramatically the landscape changed when its volcano erupted in 1957. Farms and villages were covered with ash, which added nearly an extra mile of land to the island. Later, stroll in the marina,

visit the excellent scrimshaw museum or enjoy a coffee at a local café.

Meals included: breakfast, lunch, dinner

## ◇ DAY 4

### São Jorge

Visit São Jorge, formed by volcanic fissures. On trails that crisscross the ridge and beaches, hike to Caldeira de Santo Cristo Lake, known for its clams; visit the small villages perched on the *fajãs*; explore the coffee and tea plantations and taste world-renowned São Jorge cheese. Be on deck with binoculars this afternoon as you sail around the tip of the island, passing cliffs with nesting seabirds and looking for Risso's dolphins and whales.

Meals included: breakfast, lunch, dinner

## ◇ DAY 5

### Terceira

First settled by Portuguese navigators around 1450, Terceira became a popular port of call for merchant ships and the economic and religious center of the Azores. Wind along the coastline and explore historic villages like Porto Judeu, Sao Sebastiao, and Altares. Upland at Algar do Carvao, be amazed by a huge lava tube adorned with stalactites and stalagmites, and later, stroll the streets of Praia da Vitoria. Or, take a walking tour with local guides to see the majestic Angra do Heroismo, a 15th-century UNESCO World Heritage site.

Meals included: breakfast, lunch, dinner

## ◇ DAY 6

### Santa Maria

Cruise toward the island of Santa Maria and be on deck to search for the islands' many cetaceans.

Then, go ashore at Santa Maria, historically significant as the first landfall of Christopher Columbus on his return from the Americas in 1493. See a statue of the explorer in the village of Anjos and admire breathtaking vistas as you travel along the coast or choose to hike the Pico Alto-Baía dos Anjos trail to travel from the highest point on the island to the sea.

Meals included: breakfast, lunch, dinner

◇ DAY 7

## Ponta Delgada

Explore the Furnas Valley and sample a typical Azorean specialty for lunch: *cozido*, a dish made with a variety of meats and vegetables naturally cooked underground from the heat of volcanic activity. Then, join local cetacean spotters and a marine biologist on a catamaran in search of cetaceans.

Meals included: breakfast, lunch, dinner

■ DAY 8

## Ponta Delgada / Disembark Ship

Disembark in Ponta Delgada and transfer to the airport for flights home.

**Departure Time:** Depart after 10:00 a.m. local time.

**Departure City:** Ponta Delgada, Azores

Meals included: breakfast

## Expedition

Ponta Delgada, Azores, Portugal → Ponta Delgada, Azores, Portugal

### 2027 DEPARTURE DATES

Aboard *National Geographic Orion*

07 Jul

14 Jul

21 Jul



## National Geographic Orion

GUESTS

102

CABINS

53

Joining the Lindblad fleet in 2013, the state-of-the-art *National Geographic Orion* serves as a luxurious base camp for voyages to the far-flung corners of the planet.

Built in Germany by the Cassens shipyard, the 102-guest *National Geographic Orion* was created with a high ice class to be able to venture safely into polar regions. A ship of her size is seldom built with such ice-cutting ability, which makes her a rarity. She is yacht-scale, yet rugged enough to venture far afield, making her a perfect addition to the Lindblad fleet, which she joined in 2013. Her size and nimbleness offer the perfect combination of safety and liberty to voyage untrammelled locations. In fact, *National Geographic Orion* currently holds the distinction of having sailed further south than any other Lindblad vessel.

Her menu, created by famed Australian chef, Serge Dansereau, owner of Sydney's acclaimed Bather's Pavilion restaurant, enormously popular with *National Geographic Orion's* guests, so impressed Sven Lindblad, that Serge, a chef-owner who shared the Lindblad commitment to serving local and sustainable food, was enlisted to design the dining program for the entire National Geographic-Lindblad Expeditions fleet.

*National Geographic Orion* is gracious and intimate, with a rewarding, almost clubby feeling. Of her many amenities and features, the most appealing is her outside deck space which beckons in the balmy reaches of the Pacific, and on those days in Antarctica when the midnight sun and the spectacle of the ice makes going indoors, let alone going to bed, impossible.



# Cabin Categories

## Category 1

MAIN DECK #316, 318-321

Cabins feature a luminous oval window and configurable beds: two single beds that can be converted to a queen. An armchair, reading lamps, a flat screen TV, two bedside tables, coffee table, desk and climate controls complete the amenities. Marble bathrooms are generously sized and include a spacious shower stall with a glass door.



## Category 2

MAIN DECK #302-312, 314, 315, 317

Cabins feature a luminous oval window and configurable beds: two single beds that can be converted to a queen. An armchair, reading lamps, a flat screen TV, bedside table, coffee table, desk and climate controls complete the amenities. Marble bathrooms are generously sized and include a spacious shower stall with a glass door.



## Category 3

UPPER DECK #401-412, 414-419

These suites feature a sitting area with a large window, a sofa—except slightly smaller #401 & #402—an armchair or two, writing/laptop desk, reading lamps, coffee table, flat screen TV, bedside table and climate controls. Beds are configurable (call for details). Marble bathrooms include a spacious shower stall with a glass door.



## Category 4

BRIDGE DECK #511, 515

These two suites feature separate sleeping and sitting areas, with a chair and armchair, coffee table, and a two-cushion sofa facing an expansive window. Beds are configurable (call for details). Ample storage, reading lamps, a flat screen TV and climate controls complete the amenities. Marble bathrooms are generously sized and include a spacious shower stall with a glass door.



## Category 5

BRIDGE DECK #501, 503-506, 508

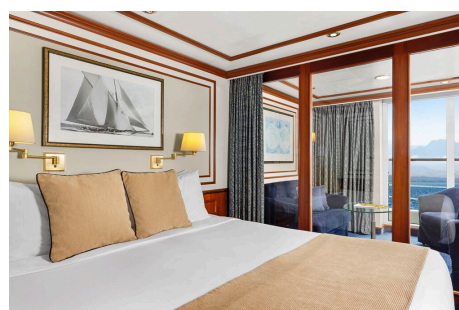
These spacious suites feature open living areas and sliding glass doors opening to a shared French balcony. Beds are configurable (call for details). A separate sitting area with armchairs and a sofa, a writing/laptop desk, coffee table, well-placed reading lamps, a flat screen TV and climate controls complete the decor. Marble bathrooms are generously sized and include a spacious shower stall with a glass door.



## Category 6

BRIDGE DECK #502, 507, 509\*, 510

These large, elegant suites feature a French balcony, except for #509 which has double windows. Each provides a separate living area with a sofa and two armchairs, coffee table, except for #502, which uniquely offers a 'soaking tub with a view' in addition to a shower stall and expansive vanity. All cabins have reading lamps, a flat screen TV and climate controls. Marble bathrooms are generously sized and include a spacious shower stall with a glass door.



## Category 1 Solo

MAIN DECK #301, 322, 323

These solo cabins feature a window or two portholes, a queen-size bed, except for #301 which has a double bed, writing desk and chair, climate controls, reading lamps, coffee table, two bedside tables and a TV. Marble bathrooms are generously sized and include a roomy shower stall with a glass door.



## Category 3 Solo

UPPER DECK #512

This solo suite features two single beds and two large windows, plus two armchairs and a small table, reading lamps, coffee table a flat screen TV and climate controls. The marble bathroom is generously sized and includes a spacious shower stall with a glass door.



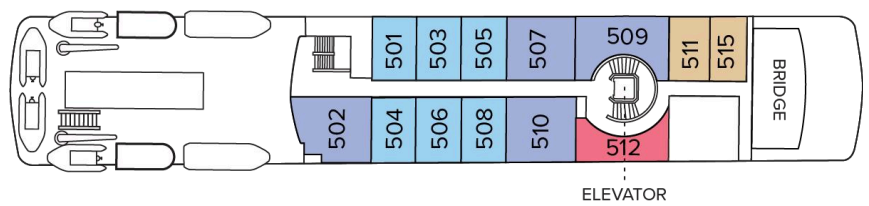
# Deck Plans

## Observation Deck



## Bridge Deck

- Category 4
- Category 5
- Category 6
- Category 3 Solo



## Upper Deck

- Category 3



## Main Deck

- Category 1
- Category 2
- Category 1 Solo



## Expedition Deck



# Ship Amenities

## Public Areas

Reception; two dining areas; lounge with bar and state-of-the-art presentation facilities; OM System photo locker; sundeck with a whirlpool hot tub that doubles as a plunge pool in warm climates; observation lounge and library; global gallery; a marina platform; plus open access to the Bridge, the Captain, officers and on-duty wildlife spotters.

## Meals

Meals are served in the dining room, or weather permitting, the outdoor café, at a single seating with unassigned tables for an informal atmosphere and easy mingling. Menus feature sustainable choices, local where possible.

## Cabins

All cabins face outside with windows or portholes, private bathroom, and climate controls. Cabins feature a coffee table, lounge chair, desk, phone, TV with on demand entertainment, multiple outlets and USB, mini refrigerator, and safe. Luxury linens and pillows. Botanically inspired shampoo, conditioner, shower gel and lotion are all available in cabin bathrooms, as well as an Expedition Essential Kit. Hair dryers, complimentary insulated water bottles and a National Geographic Atlas are available in each cabin.

## Expedition Equipment

Zodiac landing craft, a fleet of double kayaks, a crow's nest camera, a hydrophone, underwater video cameras, video microscope and an ROV. Plus, for South Pacific voyages: snorkeling gear for all guests, scuba gear for a number of pre-qualified guests, stand-up paddleboards, glass-bottom Zodiac and splash-cam.

## Special Features

A full-time doctor, undersea specialist, National Geographic photographer and National Geographic-Lindblad Expeditions certified photo instructor. A central staircase and elevator reach all decks. Enjoy daily teatime and the smoothies served after the sunrise stretch sessions on the sundeck in Polynesia.

## Wellness

A fitness center, LEXspa treatment room and sauna, staffed by wellness specialists.

## Self-Disinfecting Ships

ACT Clean Coat™ is a light-activated, self-disinfecting cleaning process that continuously breaks down viruses, bacteria, mold, and airborne allergens across all ship surfaces. This non-toxic, chemical-free system also helps us save over one million gallons of water each year in our cleaning procedures.

## Special Offers

on extensions, and may not be combined with other offers. Call for details.

### SUITE EXCLUSIVES

Spacious living areas and incredible views immerse you in the beauty of your marine surroundings.

Our new Suite Exclusives package helps make your voyage all the more memorable. [Learn more](#)

---

### CELEBRATE LIFE'S MILESTONES

Celebrate a milestone with a group of eight or more and enjoy a special amenity package including: 5% savings on voyage fares, custom group photo, US\$150 shipboard credit for the group, and other special gifts. Milestone celebration to be communicated at time of booking.

---

### COMBINING OFFERS

Certain offers may be combinable, up to two savings opportunities, except where noted otherwise.

For example, travel with a group of 8 or more on back-to-back expeditions, and take advantage of both savings.

---

### 10% OFF BACK-TO-BACK VOYAGES

Save 10% on consecutive departures, applicable on voyage fares only and not valid on extensions or airfare. Valid for new bookings only, subject to availability, and may not be combined with other offers. Call for details.

---

### SAVE 5% TRAVELING AS A GROUP

Save 5% when traveling as a group of 8 or more people. Valid for new bookings only on select departures, subject to availability, not applicable

## INCLUDED IN PRICE

All accommodations aboard ship or in hotels per itinerary; all meals as indicated in the itinerary, both aboard and onshore; beer, wine, cocktails, liquor and spirits aboard the ship (except certain premium brands which are available for purchase); hors d'oeuvres, 24-hour access to snacks, premium coffees and teas, non-alcoholic beverages, and filtered water; excursions and airport transfers to and from recommended flights, as indicated in the itinerary; crew gratuities; exploration tools curated to destination, such as Zodiacs and kayaks; guidance and company of our leading expedition staff; assistance by the National Geographic Photographer and Lindblad Expeditions-National Geographic certified photo instructor; access to the OM System Photo Gear Locker; presentations by expedition staff and expert guest speakers; complimentary reusable water bottle; onboard physician consultations; morning stretch classes and 24-hour access to exercise equipment; 24-hour access to lounges, observation decks, library, and other shared spaces; park and site entrance fees, special access permits, and port taxes. Unused services or items included in our programs are non-refundable.

## NOT INCLUDED IN PRICE

Airfare (except flights when indicated as included); pre- and post-expedition extensions; additional hotel nights (except when indicated as included); private transfers; laundry, spa treatments, Wi-Fi, and phone services (except when indicated as included); travel protection plans; and passport, visa, and immigration fees.

Additional costs associated with medical services outside onboard physician consultation.

---

## TRAVEL PROTECTION PLAN

We strongly recommend our guests to take advantage of our Travel Protection Plan. This plan offers comprehensive coverage to protect you from cancellation fees, costs incurred due to trip delays/interruption, damage or loss of baggage, medical assistance, and evacuation during your travels. Our Travel Protection Plan is available for U.S. residents only, and may be purchased any time prior to final payment due date, Travel Protection premiums are non-refundable once plan is purchased. Learn more about our Travel Protection "Plus" Plan: <https://www.expeditions.com/terms-conditions/travel-protection-plan/>

---

## CANCELLATION POLICY

Review our cancellation policy: <https://www.expeditions.com/cancellation-policy/>