






Europe, British and Irish Isles & Scotland
 50° 20' N 4° 38' W

Ancient Isles: England, Ireland and Scotland

Uncover the hidden side of well-known isles on a journey that encompasses Britain, Ireland, and Scotland. Enter coastal villages by Zodiac and land on remote beaches. Witness prehistory juxtaposed with the present, probe the secrets of Stone Age megaliths, and discover early Christian settlements, Navigate through a picturesque sea cave, and observe colonies of migratory seabirds. Stroll charming, remote towns and mingle with locals in cozy pubs throughout the land.

From
£8,397 / per person
 Does not include flights

 DATES Apr and May	 DURATION 12 Days
 SHIPS <i>National Geographic Explorer</i>	
 STARTS AT Portsmouth, England	→  ENDS AT Edinburgh, Scotland

Highlights

- ★ Trace a maritime thread around the isles, exploring the wild and beautiful places where Celtic and Viking influences still thrive in local languages and customs
- ★ Walk along Cornwall's scenic cliffside trails, and experience the peninsula's rich history and culture with visits to local producers and country estates
- ★ In the Inner Hebrides, see the stunning 12th-century Iona Abbey—believed to be the birthplace of Christianity in Scotland
- ★ Explore the wild, windswept coast of Western Ireland and Scotland; search for whales, dolphins, and seals; and see vast, important seabird nesting sites





Day by day

■ DAY 1

London, England / Portsmouth / Embark Ship

Arrive in London, the capital of England and the United Kingdom, and transfer to Portsmouth to embark the ship on your journey around the British and Irish Isles.

Meals included: dinner

◇ DAY 2

Fowey

Arrive in the Cornish port of Fowey (pronounced "Foy") in the afternoon. Hike a Cornish coastal trail or enjoy a guided walk through the village of Fowey with a local. Alternatively, venture into the countryside to a family farm. See how traditional practices are being combined with contemporary development of local crops, and enjoy a tasting of their most recent "crop."

Meals included: breakfast, lunch, dinner

◇ DAY 3

Isles of Scilly

The Isles of Scilly can trace its roots back to prehistoric times. More than 140 different islands make up this designated area of outstanding natural beauty. Take the time to explore one of England's most pristine beaches, and watch for migrating birds that frequent the islands. Weather permitting, enjoy a Zodiac ride among some of the most popular residents of the islands: the local seal colony.

Meals included: breakfast, lunch, dinner

◇ DAY 4

Cobh, Ireland

Arrive in this colorful port city on one of the world's largest natural harbors, intimately tied to maritime history and the great Irish Emigration. Visit the Cobh Heritage Centre and learn about the momentous events that took place here—from the 1912 departure of the *Titanic* to the successful rescue of passengers from the torpedoed *Lusitania* and the millions of Irish who departed these shores in search of a better life. Immerse yourself in an afternoon of Irish traditions at a local hurling club: learn about and try your hand at hurling—an ancient Gaelic Irish team sport played with a wooden stick and a small ball—enjoy time at the clubhouse that doubles as a bar, listen to live Gaelic music and chat with locals.

Meals included: lunch, dinner, breakfast

◇ DAYS 5-6

Wild West Coast of Ireland

Over the next two days, enjoy the windswept landscapes of the Dingle peninsula and surrounding islands. Get photo tips from a National Geographic Photography Expert as you sail past the uninhabited Blasket Islands, on which you'll observe a wide array of birds including storm petrels, shearwaters, terns and gulls. Keep an eye out for recently fledged jumping auks—still downy and unable to fly—as they make their way out to sea accompanied by their dads. You may also be able to spot pods of dolphins that call these waters home.

The exploration continues on land through the southern corner of Ireland with its cozy local pubs, cultural centers and country walks. Choose from a few options: delve into the heart of Irish culture, language and history at the Blasket visitor

center, where you'll learn about the islands' 1953 evacuation; hit the road on one most scenic drives on Ireland's west coast—part of the Atlantic Way; or set out on a hike boasting incredible views over Dingle's bay and peninsula.

Meals included: breakfast, lunch, dinner

◇ DAY 7

Iona and Staffa, Inner Hebrides, Scotland

Visit the sacred island of Iona and its 13th-century abbey, long revered as a Christian pilgrimage site and believed to be where the Book of Kells originated. Several Scottish kings, including the actual Macbeth, are buried in the royal graveyard here. This afternoon, explore uninhabited and windswept Staffa Island. Weather permitting, board Zodiacs and cruise through the dramatic Fingal's Cave, land on the exposed beach, walk amongst the famed six-sided volcanic basalt columns and photograph the island's puffin colony.

Meals included: breakfast, lunch, dinner

◇ DAY 8

Outer Hebrides

As you sail south along the northern coast of Scotland, admire the Outer Hebrides rising out of the North Atlantic. Conditions permitting, embark Zodiacs to land on the Isle of Lewis. There, visit the striking Calanais Standing Stones, a 5,000-year-old UNESCO World Heritage site that predates Stonehenge. Explore by foot across multiple sites that served as locations for rituals for 2,000 years.

Meals included: breakfast, dinner, lunch

◇ DAY 9

Shetland

Shetland is characterized by deep-seated cultural

traditions and dramatic landscapes. Far north and near enough to Norway for some locals to speak Scottish with a Scandinavian accent, this 100-island archipelago has never been fully tamed by those who live here. Explore these rural islands with their mix of cliffside lighthouses, ancient ruins throughout the ages, windswept pastures and harbors that have been gathering the bounties of the sea for ages. Take in the cliffs of Noss' large bird colony from the ship as you sail by.

Meals included: breakfast, lunch, dinner

◇ DAY 10

Orkney

Morning options in rugged Orkney include a visit to renowned Scapa Flow, one of the world's great natural harbors and a key historical World War I and II site. Alternatively, discover the Stone Age megaliths of the Ring of Brodgar and the 5,000-year-old stone slab village of Skara Brae. This afternoon, take a walking tour of Kirkwall—Orkney's capital and a showplace of ancient Viking history thanks to its proximity to Norway—and step inside the majestic St. Magnus Cathedral, a sandstone landmark that took three centuries to build.

Meals included: breakfast, lunch, dinner

◇ DAY 11

Aberdeen

Start the day with a panoramic drive through "the Granite City" before exploring Aberdeenshire's countryside. Choose to visit a local Highland cattle farm, where you'll learn about its award-winning products and practices. Or, dive into the complicated history of the Gordon Highlanders by visiting the local museum. Transfer back to the ship later this afternoon, and enjoy your last evening at sea. Keep an eye out for the resident group of bottlenose dolphins.

Meals included: breakfast, lunch, dinner

■ DAY 12

Edinburgh / Disembark Ship

Disembark in Edinburgh and transfer to the airport for flights home or choose to explore the Scottish Highlands on a post-voyage extension.

Meals included: breakfast

Northbound

Portsmouth, England → Edinburgh, Scotland

2027 DEPARTURE DATES

Aboard *National Geographic Explorer*

06 May				
--------	--	--	--	--

Alternative Routes

Visit Expeditions.com for more information.

2027 Departure Dates

25 Apr



National Geographic Explorer

GUESTS

148

CABINS

81

Built to handle deep swells and towering waves, the *National Geographic Explorer* lends herself to globe-spanning travel and a dedication to curiosity and wonder.

Originally constructed for service along Norway's coast as part of the famed Hurtigruten, or Coastal Express, she ferried passengers among the fjords of this iconic coast in conditions that could deteriorate into heavy seas in a matter of minutes. She had to be able to handle deep swells and towering waves—and have a high degree of maneuverability. Those traits, and an ideal size, made her a natural choice for addition to the Lindblad fleet.

The plans to completely rebuild her drew on 50 years of pioneering expedition history and expertise. *National Geographic Explorer* was equipped with an ice-strengthened hull and advanced navigation equipment for polar expeditions; a roster of tools for exploration; and a well-appointed interior with vast expanses of glass for an unprecedented connection to the environment. Her interior and exterior design embodied the Lindblad expedition ethos—the privilege of wildness and the luxury of comfort.

For many guests she remains their paradigm of an expedition ship. She is devoted to exploration—from her Welcoming Bridge, and the Chart Room below it where you can tuck in to warm up with a hot chocolate, to her high-perched Observation deck with its aqueous light and compelling 24/7 views. Even the art on the walls— from the Hurley prints of Shackleton’s expedition to the stunning National Geographic photos— tells an uber- narrative of globe-spanning travel and a dedication to curiosity and wonder.

National Geographic Explorer is a state-of-the-art expedition ship. She is a fully stabilized, ice-class vessel, with an ice-reinforced hull, enabling her to navigate polar passages while providing exceptional comfort.

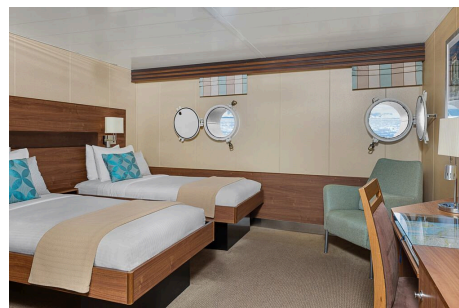


Cabin Categories

Category 1

MAIN DECK #301-308

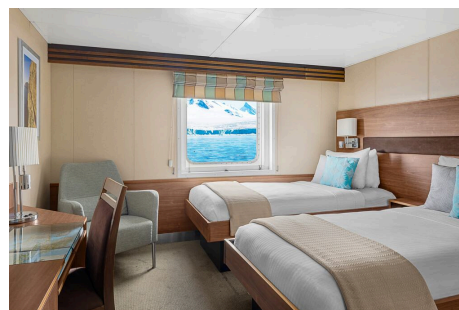
Cabins feature one or two portholes. Most cabins feature two single beds that can be converted to a queen. Cabins #301-306 feature one queen-sized bed. All cabins feature a writing desk, floor length mirror, reading lamps, well-appointed bathrooms with a roomy glass-wall shower, and a TV.



Category 2

MAIN DECK #317-320, 335-336

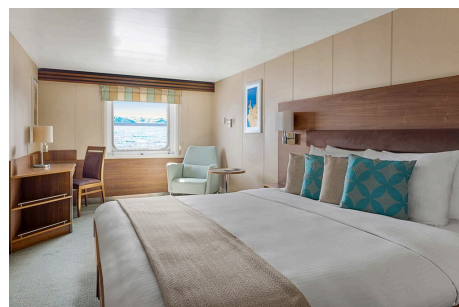
Cabins feature two single beds (some can convert to a queen-sized bed), and one large window. They offer a writing desk, floor length mirror, reading lamps, sitting chair, well-appointed bathrooms with a roomy glass-wall shower, and a TV.



Category 3

MAIN DECK #313-316, 321-328, 337-340, 342, 344, 348, 350

Cabins feature two single beds (some can convert to a queen-sized bed), one large window, and two sitting chairs and a small table and ample storage. They have a writing desk, floor length mirror, reading lamps, well-appointed bathrooms with a roomy glass-wall shower, and a TV. Cabins 341 & 343 have a sofa bed for a triple.



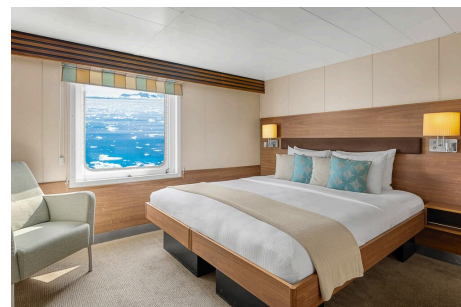
Category 4

UPPER DECK #201-202, 204-207, 210, 212, 217, 226, 228

Cabins feature two single beds and at least one large window. All cabins can convert between two single beds to a queen, except Cabins 217, 226 and 228, which feature one queen-size bed only. All cabins feature climate controls, sitting chairs and a TV. Bathrooms are also generously sized with a roomy, glass-walled shower stall.

VERANDA DECK #103-104, 107-108

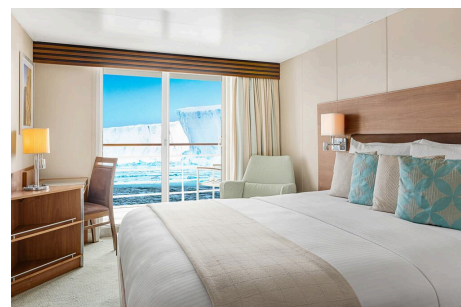
Cabins feature two single beds that can convert into a queen. They have a writing desk, floor length mirror, reading lamps, sitting chair, private bathrooms with a glass-wall shower, and a TV.



Category 5

UPPER DECK #209, 211, 214, 216, 218, 220-222, 224

Cabins feature a balcony with sliding glass doors, one queen-sized bed, writing desk, floor length mirror, reading lamps, private bathrooms with a glass-wall shower, and a TV. (Cabin 221 has two single beds that can convert to a queen.)



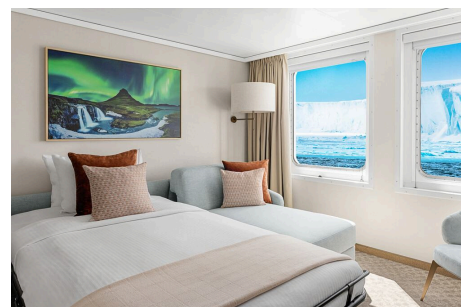
Category 6

UPPER DECK #213

This spacious cabin has a private balcony, two single beds that can be converted into a queen, a writing desk, double closet, bookcase, pull-out sofa, armchairs, two large windows and a TV. The sleeping area has a glass partition separating the living room. Bathrooms are generously sized with a roomy glass-walled shower stall and twin sinks.

VERANDA DECK #101-102

These spacious cabins can be converted into triples. They have two single beds that can be converted into a queen, a writing desk, double closet, bookcase, sofa-bed, chairs, two large windows and a TV. The sleeping area can be closed off with the glass partition. Bathrooms are generously sized with a roomy glass-walled shower stall and twin sinks.



Category 7

UPPER DECK #215, 219, 230

These large cabins with private balconies have two single beds that can convert to an Olympic-sized queen. They have seating areas with a sofa-bed and can be converted to triples. Cabins also include a desk with chairs, coffee table with sitting chair, and a small table. Bathrooms are generously sized with a roomy glass-walled shower stall and twin sinks.



Category A Solo

MAIN DECK #309-311, 329-334

These cabins feature one single bed and a large window, a writing desk, reading lamp, bathroom with a roomy glass-wall shower stall, and a TV.



Category B Solo

UPPER DECK #203, 208

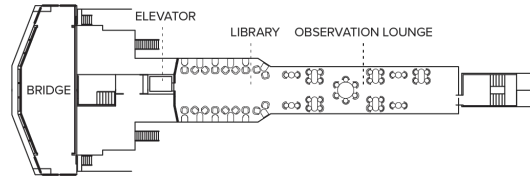
VERANDA DECK #105-106

These cabins feature one single bed and a large window, a writing desk, reading lamp, bathroom with a roomy glass-wall shower stall, and a TV.

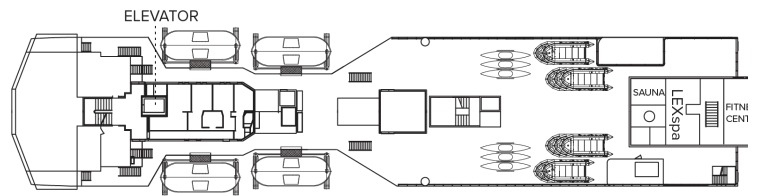


Deck Plans

Bridge Deck



Wellness Deck



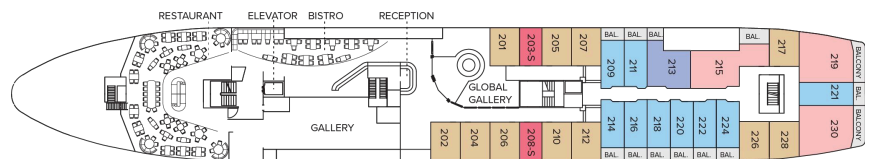
Veranda Deck

- Category 4
- Category 6
- Category B Solo



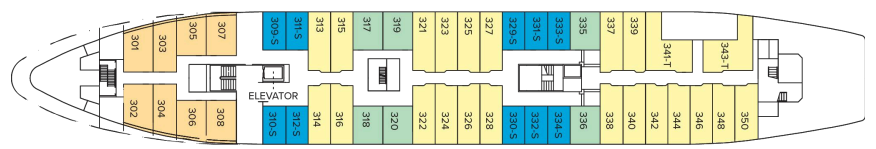
Upper Deck

- Category 4
- Category 5
- Category 6
- Category 7
- Category B Solo

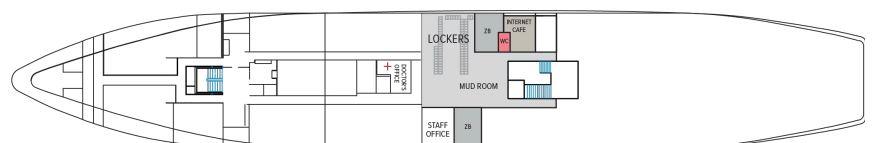


Main Deck

- Category 1
- Category 2
- Category 3
- Category 2 Solo



B Deck



Ship Amenities

Public Areas

Reception; three dining areas; global gallery; library, OM System photo locker; 24-hour Bistro area beverage bar; lounge with bar and state-of-the-art presentation facilities; observation lounge; mudroom with lockers for expedition gear; plus open access to the Bridge, the Captain, officers and on-duty wildlife spotters.

Meals

Meals are served in the dining room, Bistro bar or the Observation lounge, at a single seating with unassigned tables for an informal atmosphere and easy mingling. Menus feature sustainable choices, local where possible.

Cabins

81 outside cabins. All cabins face outside with windows or portholes, private bathroom and climate controls. Cabins are equipped with Wi-Fi, multiple electrical outlets, USB outlets, full length mirror and phones. TV featuring entertainment on demand, live feed for onboard presentations, bow camera and ship's position. Luxury bed linens and pillows. Botanically inspired shampoo, conditioner, shower gel and lotion are all available in cabin bathrooms, as well as an Expedition Essential Kit. Hair dryers, complimentary insulated water bottles and a National Geographic Atlas are available in each cabin.

Expedition Equipment

Zodiac landing craft, a fleet of double kayaks, a crow's nest camera, a hydrophone, underwater video cameras, video microscope and an ROV. Plus, for South Pacific voyages: snorkeling gear for all guests, scuba gear for a number of pre-qualified guests, stand-up paddleboards, glass-bottom Zodiac and splash-cam.

Special Features

A full-time doctor, undersea specialist, National Geographic photographer and National Geographic-Lindblad Expeditions certified photo instructor, internet café and laundry. Enjoy a session in the topside library with a good book.



Wellness

A glass-enclosed fitness center, outdoor stretching area, a LEXspa treatment room and sauna, staffed by wellness specialists.

Self-Disinfecting Ships

ACT Clean Coat™ is a light-activated, self-disinfecting cleaning process that continuously breaks down viruses, bacteria, mold, and airborne allergens across all ship surfaces. Not only does this create a cleaner, healthier shipboard environment for guests and crew alike, but this non-toxic, chemical-free system also saves more than one million gallons of water each year in our cleaning procedures, and reduces our carbon footprint as well as the amount of plastic and waste in our supply chain.

Special Offers

SAY YES—TO GOING WITHOUT SECOND THOUGHTS

Receive savings of £1100 per guest deducted from cabin fare on select 2026 voyages when you pay in full at time of booking. Applicable savings will be deducted from cabin fare before any additional savings with the purchase of cabin fare. To qualify for the savings, nonrefundable payment in full is due at time of booking. This promotional offer is subject to separate terms and conditions. Standard cancellation, refund, and change policies do not apply. All amounts paid in connection with this promotion are non-refundable and non-transferable, regardless of cancellation date, and no refund, credit, or compensation will be provided except as expressly stated herein. Promotional offer valid on new bookings only for select 2026 departures, subject to availability and offer may be withdrawn at any time without prior notice, not applicable on airfare or extensions, and may not be combined with other promotions. Additional restrictions may apply.

SUITE EXCLUSIVES

Spacious living areas and incredible views immerse you in the beauty of your marine surroundings. Our new Suite Exclusives package helps make your voyage all the more memorable. [Learn more](#)

CELEBRATE LIFE'S MILESTONES

Celebrate a milestone with a group of eight or more and enjoy a special amenity package including: 5% savings on voyage fares, custom group photo, US\$150 shipboard credit for the group, and other special

gifts. Milestone celebration to be communicated at time of booking.

COMBINING OFFERS

Certain offers may be combinable, up to two savings opportunities, except where noted otherwise. For example, travel with a group of 8 or more on back-to-back expeditions, and take advantage of both savings.

10% OFF BACK-TO-BACK VOYAGES

Save 10% on consecutive departures, applicable on voyage fares only and not valid on extensions or airfare. Valid for new bookings only, subject to availability, and may not be combined with other offers. Call for details.

SAVE 5% TRAVELING AS A GROUP

Save 5% when traveling as a group of 8 or more people. Valid for new bookings only on select departures, subject to availability, not applicable on extensions, and may not be combined with other offers. Call for details.

INCLUDED IN PRICE

All accommodations aboard ship or in hotels per itinerary; all meals as indicated in the itinerary, both aboard and onshore; beer, wine, cocktails, liquor and spirits aboard the ship (except certain premium brands which are available for purchase); hors d'oeuvres, 24-hour access to snacks, premium coffees and teas, non-alcoholic beverages, and filtered water; excursions and airport transfers to and from recommended flights, as indicated in the itinerary; crew gratuities; exploration tools curated to destination, such as Zodiacs and kayaks; guidance and company of our leading expedition staff; assistance by the National Geographic Photographer and Lindblad Expeditions-National Geographic certified photo instructor; access to the OM System Photo Gear Locker; presentations by expedition staff and expert guest speakers; complimentary reusable water bottle; onboard physician consultations; morning stretch classes and 24-hour access to exercise equipment; 24-hour access to lounges, observation decks, library, and other shared spaces; park and site entrance fees, special access permits, and port taxes. Unused services or items included in our programs are non-refundable.

NOT INCLUDED IN PRICE

Airfare (except flights when indicated as included); pre- and post-expedition extensions; additional hotel nights (except when indicated as included); private transfers; laundry, spa treatments, Wi-Fi, and phone services (except when indicated as included); travel protection plans; and passport, visa, and immigration fees.

Additional costs associated with medical services outside onboard physician consultation.

TRAVEL PROTECTION PLAN

We strongly recommend our guests to take advantage of our Travel Protection Plan. This plan offers comprehensive coverage to protect you from cancellation fees, costs incurred due to trip delays/interruption, damage or loss of baggage, medical assistance, and evacuation during your travels. Our Travel Protection Plan is available for U.S. residents only, and may be purchased any time prior to final payment due date, Travel Protection premiums are non-refundable once plan is purchased. Learn more about our Travel Protection "Plus" Plan: <https://www.expeditions.com/terms-conditions/travel-protection-plan/>

CANCELLATION POLICY

Review our cancellation policy: <https://www.expeditions.com/cancellation-policy/>