





Caribbean &
15° 24' N 61° 22' W

Sailing St. Lucia, Dominica and Beyond Aboard Sea Cloud II

Embark on a voyage aboard the elegant *Sea Cloud II* and explore some of the Caribbean's most enchanting destinations. Sail the region's turquoise waters stopping at picturesque islands like Saint Lucia, Dominica, and Saint Kitts. Discover volcanic landscapes, lush rainforests, and vibrant colonial towns with expert-led excursions. Set out on a photo walk with our Lindblad Expeditions-National Geographic certified photo instructor. Enjoy relaxing beach outings, swim, and soak up the local culture at our unique ports of call. Back onboard, indulge in exquisite dining and learn about the rich history of the islands from our historian.

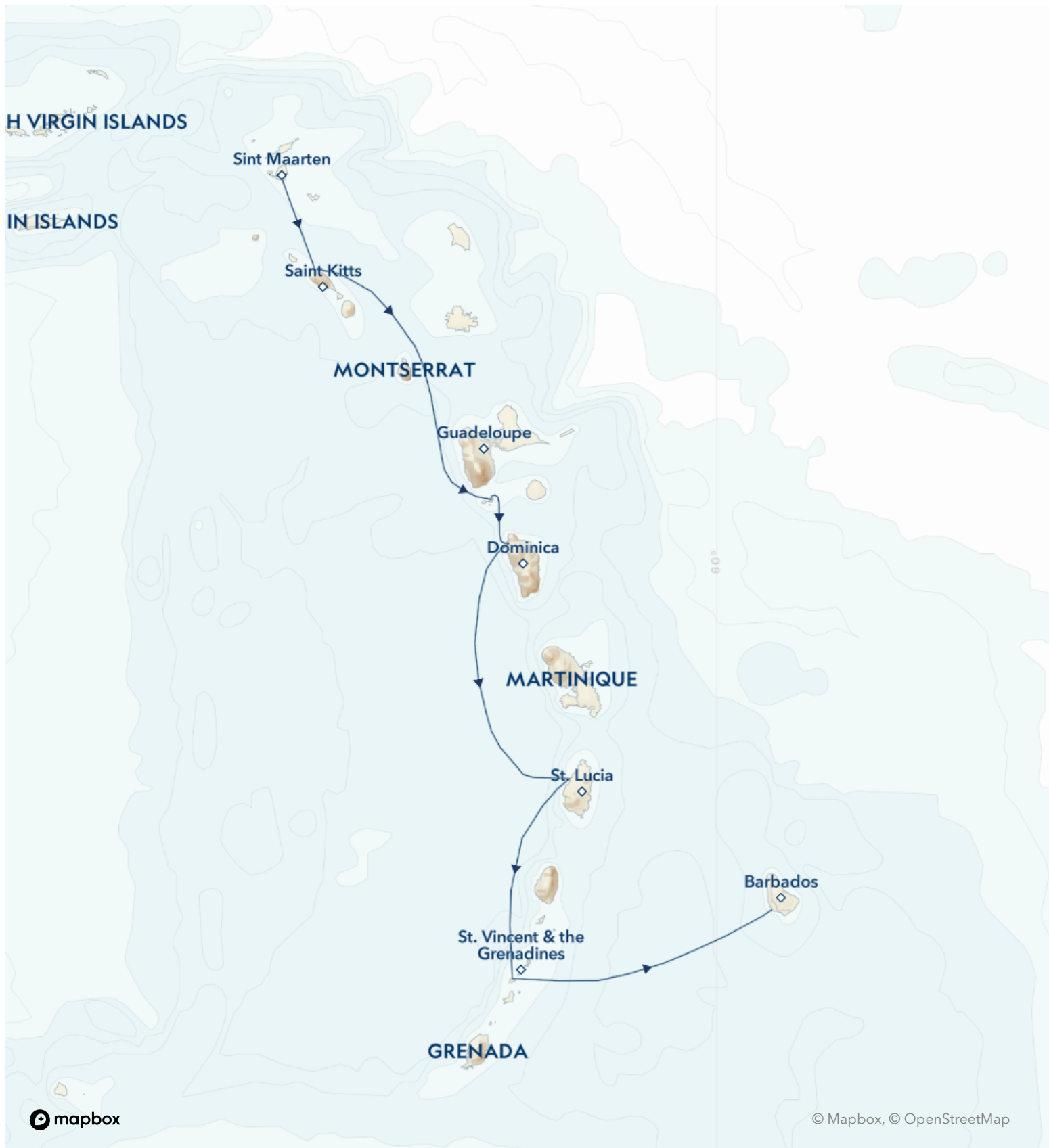
From
\$ 8,344 / per person
Does not include flights

	DATES Feb		DURATION 8 Days
	SHIPS <i>Sea Cloud II</i>		
	STARTS AT Philipsburg, Sint Maarten	→	 ENDS AT Bridgetown, Barbados

Highlights

- ★ Unwind aboard *Sea Cloud II*, a romantic tall ship with every modern comfort, and observe the crew scramble high in the rigging to hand-set the sails
- ★ Discover Union Island, nicknamed the "Tahiti of the West Indies" with its dramatic volcanic landscape, turquoise waters, and local flavors
- ★ Explore two UNESCO World Heritage sites: Saint Kitts' 17th-century Brimstone Hill Fortress and St. Lucia's iconic twin peaks, The Pitons
- ★ Go for refreshing swims from remote beaches, enjoy a BBQ lunch, or relax with a beverage and good book





Day by day

■ DAY 1

Philipsburg, Sint Maarten / Embark Ship

Arrive in Sint Maarten and settle into your cabin aboard the elegant *Sea Cloud II*. Cast off this evening, and enjoy dinner and your first Caribbean sunset as you begin your journey through the Windward and Leeward Islands.

Arrival Time: Arrive before 4:00 p.m. local time.

Arrival City: Philipsburg, St. Maarten

Meals included: dinner

◇ DAY 2

Under Sail / Saint Kitts, Saint Kitts and Nevis

Begin the morning on deck, where sailors climb aloft to raise *Sea Cloud II*'s sails by hand. Enjoy commentary from the Captain as you learn about how a real square rigger is handled by traditional sailors.

With a mountainous interior and rugged coastline of indented bays, St. Kitts is a striking island. A bit off the beaten path, the island has a very relaxed, local feel and is extremely accommodating to travelers. Spend the afternoon ashore exploring Brimstone Hill Fortress, a UNESCO World Heritage site, as well as Romney Manor Gardens and a Caribbean batik workshop.

Meals included: breakfast, lunch, dinner

◇ DAY 3

Under Sail / Terre-de-Haut, Îles des Saintes, Guadeloupe

Weather permitting, enjoy another morning under billowing sails. Grab a book, attend a presentation by your onboard experts or just relax as *Sea Cloud II* plies the Caribbean Sea.

Distinctly French in character and culture, the shops, homes and people of Les Saintes are colorful, tasteful, and delightful. Enjoy picture-postcard views from Fort Napoléon, with its cactus garden, iguanas and maritime museum. Then stroll through French colonial Terre-de-Haut and swim from a nearby sandy beach.

Meals included: breakfast, lunch, dinner

◇ DAY 4

Dominica

Spend the day exploring Dominica, known as "the nature island" for its spectacular beauty and many protected reserves. Hike through enchanting rainforest. Join your historian in exploring the ruins of Fort Shirley, an 18th-century British garrison, and learn about Dominica's turbulent colonial history. Go for a refreshing swim before an exclusive sunset cocktail reception at the Fort.

Meals included: breakfast, lunch, dinner

◇ DAY 5

Under Sail / Soufrière, Saint Lucia

Arrive at St. Lucia and anchor under the island's iconic twin peaks, the Pitons, which rise dramatically above the sea. After exploring the fishing port of Soufrière, drive into St. Lucia's active volcanic crater and discover the otherworldly landscape of mud pools and sulfur springs. Visit the tropical Mamiku botanical gardens—backed by the gorgeous Diamond Falls—and delve into the grounds' complex history, which dates back to the reign of Louis XIV. Spend the afternoon sailing south.

Meals included: breakfast, lunch, dinner

◇ DAY 6

Union Island, Saint Vincent and Grenadines

Just three miles long and one mile wide, Union Island is nicknamed "the Tahiti of the West Indies" thanks to its dramatic volcanic silhouette. Stretch your legs with a walk on Chatham Bay's beach, go for a swim in its turquoise water and admire *Sea Cloud II* anchored off the coast. Enjoy a BBQ lunch on the bay and indulge in some local flavors before setting sail this afternoon.

Meals included: breakfast, lunch, dinner

◇ DAY 7

At Sea

Begin the morning on deck, where sailors climb aloft to raise *Sea Cloud II*'s sails by hand. Enjoy a full day under sail on the Caribbean Sea. Relax with a book, photograph the ship's exquisite details and attend talks by our experts. This evening, enjoy the captain's farewell dinner to celebrate the end of a fantastic voyage.

Meals included: breakfast, lunch, dinner

■ DAY 8

Bridgetown, Barbados / Disembark Ship

Disembark *Sea Cloud II* this morning after breakfast for flights home.

Departure Time: Depart after 12:00 p.m. local time.

Departure City: Bridgetown, Barbados

Meals included: breakfast

Southbound

Philipsburg, Sint Maarten → Bridgetown,
Barbados

2027 Departure Dates

Aboard *Sea Cloud II*

12 Feb			
--------	--	--	--

Alternative Routes

Visit Expeditions.com for more information.

2026 Departure Dates

06 Feb

2027 Departure Dates

19 Feb



Sea Cloud II

Guests

88

Cabins

44

Sail in style aboard a unique vessel that's a perfect combination of nostalgic elegance and modern comfort

Sea Cloud II is an alluring sailing vessel perfectly suited to travel the scenic shores of Italy and Croatia, exploring little-seen archipelagos and anchoring in small coves. A romantic tall ship with every modern comfort, Sea Cloud II combines the spaciousness and welcome amenities of a contemporary vessel with the grace and elegance of a square rigger. Inspired by the legendary 1930s yacht Sea Cloud, Sea Cloud II embodies the Golden Age of Sail; yet, it is modernly built, reflecting today's standards of luxury. From marble bathrooms and elegant furnishings to televisions and climate controls, comfortable cabins have expected amenities.

Expansive outdoor decks and viewing areas provide ideal vantage points for appreciating the scenery of the Mediterranean and the Adriatic, and for savoring the romance of being under sail. Al fresco dining—accompanied by a pianist—is offered on the Lido Deck where shorts and deck shoes are the norm. While the ship's indoor spaces, like a sizeable dining room and lounge, are suitable for formality, there's a lighthearted delight in enjoying them in casual dress. Guests can also take advantage of the spa that offers a sauna, fitness area, and massage therapy.

Expect the hallmarks of a Lindblad Expeditions-National Geographic voyage, including expert field staff like historians and certified photo instructors (CPIs); top-quality dining that includes locally sourced ingredients and regional specialties; evening Recaps that review the day and set the stage for the next; experienced service; and an open Bridge policy that invites guests to observe the workings of a ship under sail.



Cabin Categories

Category 1S

Cabin Deck: #207-210

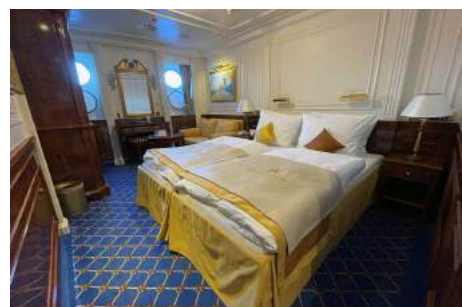
These 236 sq. ft. outside-facing cabins, located on the Cabin Deck, have a double bed (which can be separated into two single beds for cabin share program) and two portholes. Cabin features include a couch, television, small table, dressing table with mirror, a closet, two nightstands, minibar, safe, temperature controls, and telephone. The beautiful marble bathroom is equipped with a shower.



Category 1

Cabin Deck: #207-210

These 236 sq. ft. outside-facing cabins, located on the Cabin Deck, have a double bed (which can be separated into two single beds) and two portholes. Cabin features include a couch, television, small table, dressing table with mirror, a closet, two nightstands, minibar, safe, temperature controls, and telephone. The beautiful marble bathroom is equipped with a shower. Note: Solo occupancy cabins are available in Category 1.



Category 2

Cabin Deck: #211-212, 214-217, 224-231

These 247 sq. ft. outside-facing cabins, located on the Cabin Deck, have a double bed (which can be separated into two single beds) and two portholes. Cabin features include a couch, television, small table, dressing table with mirror, a closet, two nightstands, minibar, safe, temperature controls, and telephone. The beautiful marble bathroom is equipped with a shower. Note: Some Category 2 cabins have connecting doors.



Category 3

Cabin Deck: #218-223

These 258 sq. ft. outside-facing cabins, located on the Cabin Deck, have a double bed (which can be separated into two single beds) and three portholes. Cabin features include two chairs, a small table, television, dressing table with mirror, writing desk, two closets, two nightstands, minibar, safe, temperature controls, and telephone. The beautiful marble bathroom is equipped with a shower.



Category 4

Promenade Deck: #301, 302

These 249 sq. ft. outside-facing cabins, located on the Promenade Deck, have a double bed (which can be separated into two single beds) and three large panorama windows. Cabin features include two chairs, a small table, television, writing desk/dressing table with mirror, closets, two nightstands, minibar, safe, temperature controls, and telephone. The beautiful marble bathroom is equipped with a shower.



Category 5

Promenade Deck: #303, 304

These outside-facing suites, located on the Promenade Deck, have a double bed (which can be separated into two single beds) and three large panorama windows. #303 is 271 sq. ft. and #304 is 265 sq. ft. Suite features include an electric fireplace, separate sitting area with two large chairs and large table, walk-in closet, television, dressing table with mirror, two nightstands, minibar, safe, temperature controls, and telephone. The beautiful marble and gold-fitted bathroom is equipped with shower bathtub and marble washbasin.



Category 6

Promenade Deck: #305-312, 314-319

These 281 sq. ft. outside-facing suites, located on the Promenade Deck, have a double bed (which can be separated into two single beds) and three large panorama windows. Suite features include an electric fireplace, separate sitting area with two large chairs and large table, walk-in closet, television, dressing table with mirror, two nightstands, minibar, safe, temperature controls, and telephone. The beautiful marble and gold-fitted bathroom is equipped with shower bathtub and marble washbasin.



Category 7

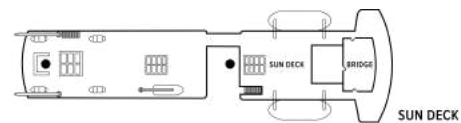
Lido Deck: #401, 402

These 335 sq. ft. outside-facing suites, located on the Lido Deck, have a double four-poster bed and four large panorama windows. Cabin features include an electric fireplace, separate sitting area with a couch, two large chairs and large table, walk-in closet with four large wardrobes, television, dressing table with mirror, two nightstands, minibar, safe, temperature controls, and telephone. The large, beautiful marble and gold-fitted bathroom is equipped with separate shower and bathtub, and marble washbasin.



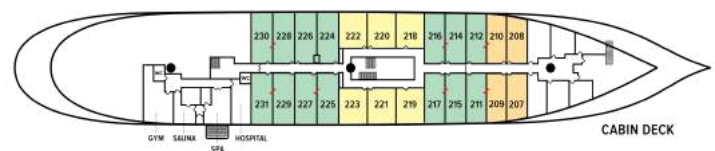
Deck Plans

Sun Deck



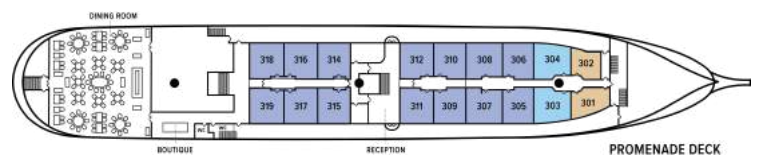
Cabin Deck

- Category 1S
- Category 1
- Category 2
- Category 3



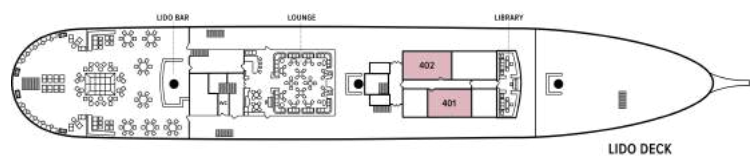
Promenade Deck

- Category 4
- Category 5
- Category 6



Lido Deck

- Category 7



Ship amenities

Well-Appointed Cabins

All cabins are outside-facing and have portholes or windows, a marble bathroom, minibar, ample storage space, and period furnishings. Some include special features like a separate sitting area, walk-in dressing area, canopy bed, or electric fireplace.

The Thrill of Being Under Sail

A three-masted barque with 23 sails, Sea Cloud II is sailed by hand as often as conditions permit, starting with a full description of the sailing process the first morning on board and then as much as possible during the voyage. This tradition carried out by a skilled crew is an art form that contributes to the romance of being at sea.



Welcome Wellness Amenities

Unwind in the spa with a sauna or massage. A fitness room includes a treadmill, stationary bicycle, rowing machine, elliptical trainer, and weights.

A Choice of Indoor Public Spaces

An elegant lounge is a perfect venue for a nightly cocktail while the light-filled library is a lovely spot to sit down with a book about the region. Guests are welcome on the Bridge (conditions permitting) to learn how Sea Cloud II is navigated and sailed.



Inviting Outdoor Spaces

Outdoor spaces like the Lido and Promenade Decks invite relaxation in the open air. Feel the balmy breezes as idyllic scenery passes. Stretch out in a recliner and enjoy the ease of travel under sail; or enjoy a refreshment under the shade of a canopy.

Quality Dining

Dinners are served in single seating in the spacious restaurant, where breakfasts are also served buffet style, with eggs to order. Lunches, afternoon tea, and some special meals are more "at leisure" on the Lido Deck. All food and drink on board focus on Continental cuisine and local specialties.

Noteworthy Features

The ship's interiors have the nostalgic feel of a luxurious 1930s yacht but boast contemporary features such as a helpful reception desk, wide passageways, and a central staircase. During your voyage, we will cover your bar tab aboard the ship (excluding certain super-premium brands).

Special Offers

SPECIAL SAVINGS

Receive savings of up to 20% on select voyages as indicated on our special offer page. Applicable savings will be deducted from cabin fare after any additional applicable savings with the purchase of cabin fare. Receive 50% off the deposit due at the time of booking on select 2026 and 2027 voyages outside of final payment. Remaining deposit balance is due at the time of final payment. Additional restrictions may apply. Offers valid on new bookings only for select 2026 and 2027 departures, subject to availability and offer may be withdrawn at any time without prior notice, not applicable on airfare or extensions, and may not be combined with other offers. Call for details.

CELEBRATE LIFE'S MILESTONES

Celebrate a milestone with a group of eight or more and enjoy a special amenity package including: 5% savings on voyage fares, custom group photo, US\$150 shipboard credit for the group, and other special gifts. Milestone celebration to be communicated at time of booking.

10% OFF BACK-TO-BACK VOYAGES

Save 10% on consecutive departures, applicable on voyage fares only and not valid on extensions or airfare. Valid for new bookings only, subject to availability, and may not be combined with other offers. Call for details.

SAVE 5% TRAVELING AS A GROUP

Save 5% when traveling as a group of eight or more people. Valid on voyage fares only and not applicable on extensions or airfare. Deposit, final payments, and

cancellation policies for group travel vary from our regular policies. Valid for new bookings only, subject to availability, and may not be combined with other offers. Call for details.

COMBINING OFFERS

Certain offers may be combinable, up to two savings opportunities, except where noted otherwise. For example, travel with a group of 8 or more on back-to-back expeditions, and take advantage of both savings.

Included in price

All accommodations aboard ship per itinerary; all meals as indicated in the itinerary, both aboard and onshore; beer, wine, cocktails, liquors and spirits aboard the ship (except certain premium brands which are available for purchase); basic Wi-Fi (5GB per person); hors d'oeuvres, 24-hour access to snacks, premium coffees and teas, non-alcoholic beverages, and filtered water; excursions and airport transfers to and from recommended flights, as indicated in the itinerary; crew gratuities; exploration tools curated to destination, such as snorkeling equipment (including wetsuits, masks, and fins); guidance and company of our leading expedition staff; assistance by the Lindblad Expeditions-National Geographic certified photo instructor; presentations by expedition staff and expert guest speakers; complimentary reusable water bottle; onboard physician consultations; 24-hour access to shared spaces; park and site entrance fees, special access permits, and port taxes. Unused services or items included in our programs are non-refundable.

Not included in price

Airfare (except flights when indicated as included); pre- and post-expedition extensions; additional hotel nights (except when indicated as included); private transfers; laundry, and phone services (except when indicated as included); travel protection plans; and passport, visa, and immigration fees.

Additional costs associated with medical services outside onboard physician consultation.

Travel protection plan

We strongly recommend our guests to take advantage of our Travel Protection Plan. This plan offers comprehensive coverage to protect you from cancellation fees, costs incurred due to trip delays/interruption, damage or loss of baggage, medical assistance, and evacuation during your travels. Our Travel Protection Plan is available for U.S. residents only, and may be purchased any time prior to final payment due date, Travel Protection premiums are non-refundable once plan is purchased. Learn more about our Travel Protection "Plus" Plan: <https://www.expeditions.com/terms-conditions/travel-protection-plan/>

Cancellation policy

Review our cancellation policy: <https://www.expeditions.com/cancellation-policy/>