

Antarctica
 61° 59' S 58° 1' W

Antarctica Direct: Sail and Fly the Drake Passage

Experience the wild grandeur of the White Continent in a more efficient, expedient way with our ten, eleven and twelve day options. On this new itinerary, cruise the Drake Passage one way, and then bypass the Drake Passage on the way back on a 2-hour flight from Antarctica and discover all of the highlights without sacrificing the extra time. Travel with a diverse team of experts aboard the National Geographic Explorer, the definitive expedition ship. Venture into channels and coves framed by towering peaks. Watch for whales off the bow; Zodiac cruise around enormous icebergs; and hike, kayak, and even possibly cross-country ski in complete tranquility. Choose an active agenda or surrender to the pleasures of relaxing downtime and shipboard camaraderie. Plus, get top shots with the






help of a National Geographic Photography Expert.

NOTE: This is an expedition in the truest sense—flexibility is key. Delays and early departures of flights due to inclement weather are common in Antarctica. In the event of a flight adjustment, your expedition team may implement a contingency plan with alternative activities. For answers to questions you may have about our Fly the Drake Passage programs, please see our [FAQ page](#) .

From

\$ 12,912 / per person

Includes required flights

 DATES Jan, Feb, Mar, Nov and Dec	 DURATION 10 Days
 SHIPS <i>National Geographic Explorer</i>	
 STARTS AT Ushuaia, Argentina	→  ENDS AT Puerto Natales, Chile

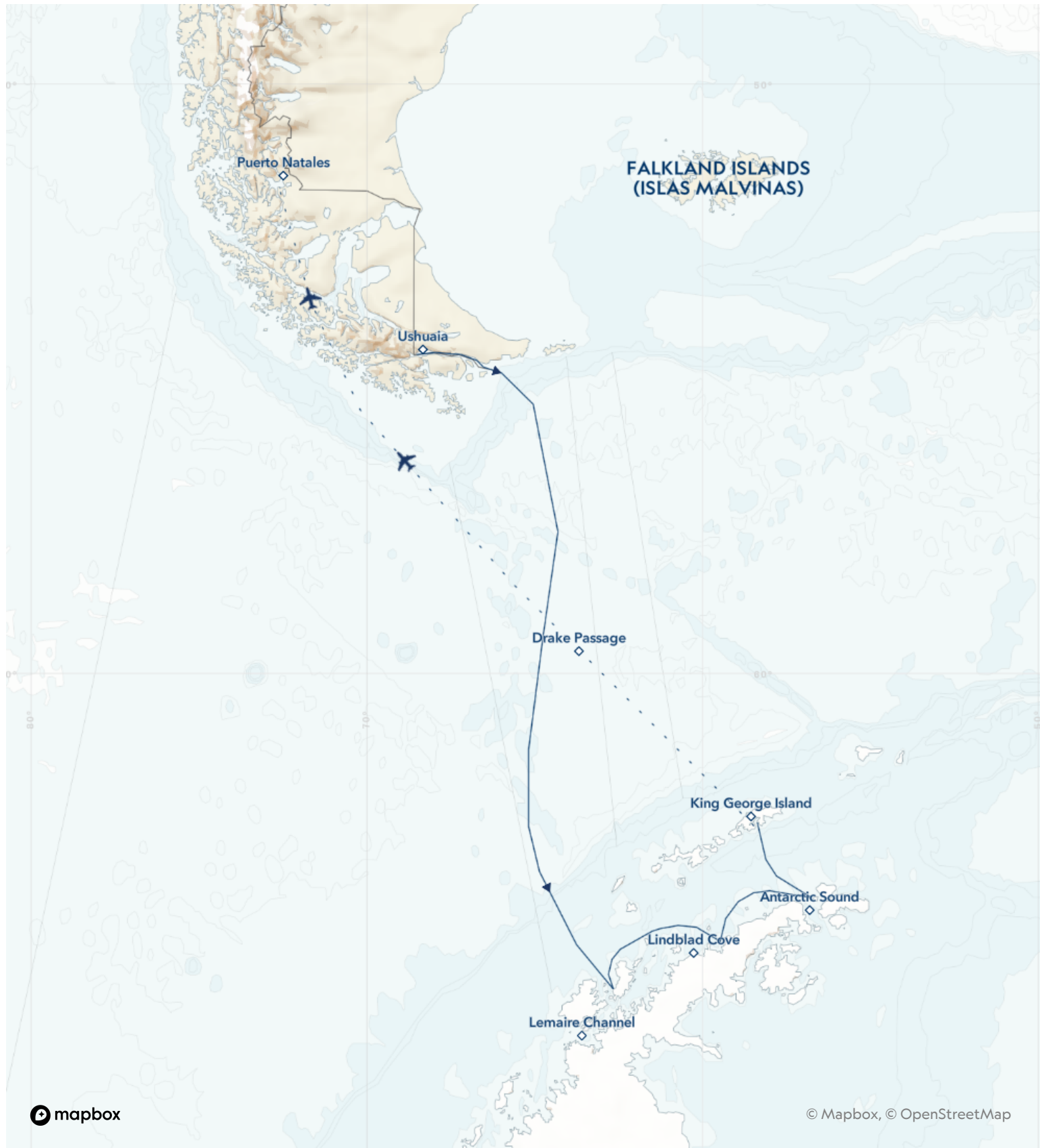
Minimum Age Requirement: Any children booked on Antarctic or Arctic voyages must be at least 4 years old at time of embarkation.

NOTE: For answers to questions you may have about our Fly the Drake Passage programs, please see our [FAQ page](#).

Highlights

- ★ Experience it all—cruise the legendary Drake Passage aboard the National Geographic Explorer and then enjoy the ease of returning on our 2-hour direct flight from King George Island to Puerto Natales
- ★ Explore the world's last great wilderness in the company of top naturalists, and the most experienced polar captains in Antarctica, with more than 55 years of expedition heritage
- ★ Hike amid magnificent mountains; see huge glaciers; and observe a parade of gentoo, Adélie, and chinstrap penguins
- ★ Kayak in protected waters, paddling in the Antarctic stillness as penguins swim nearby





Day by day

■ DAY 1

Ushuaia, Argentina

Arrive in Ushuaia. Sandwiched between ice-mantled peaks and the frigid waters of the Beagle Channel, this is a fittingly wild place to be known as “El Fin del Mundo” or “The End of the World.” Transfer from the airport to your hotel. In the evening, enjoy dinner and attend a briefing on your upcoming adventure.

Arrival Time: Arrive by 5:00 p.m. local time.

Arrival City: Ushuaia, Argentina

Meals included: dinner

◇ DAY 2

Ushuaia / Embark Ship

Check out of your hotel and begin exploring this amazing region. Visit Tierra del Fuego National Park, clad in dense beech forest just as much of Antarctica was millions of years ago. Savor lunch on board a private catamaran as you cruise the Channel, keeping an eye out for plump South American sea lions and sleek seabirds like the imperial cormorant. By day’s end, you’ll be comfortably on board the ship and ready to sail off to the White Continent.

Meals included: breakfast, lunch, dinner

◇ DAYS 3-4

At Sea Crossing the Drake Passage

At times ferocious, at others flat calm, this legendary 500-mile-wide strait divides South America from the Antarctic Peninsula. Feel the excitement build as you begin the crossing, often accompanied by seabirds like the wandering albatross and—if luck allows—a pod of killer whales or rare dolphins. Get to know the ship and prepare

for the adventures ahead. Visit the Bridge (ideal for wildlife spotting), relax with a massage, attend a talk on the unique biology of penguins or simply settle into a comfy chair in the observation lounge, looking out over the waves as you contemplate the history of this passage named for English privateer Francis Drake, but first discovered by Spanish navigator Francisco de Hoces.

Meals included: breakfast, lunch, dinner

◇ DAYS 5-8

Exploring Antarctica

With long hours of daylight at this time of year, you’ll have ample opportunities to explore. The schedule is flexible, allowing you to take advantage of the unexpected, whether you’re watching whales at play off the bow of the ship, hiking alongside penguin highways or enjoying an evening Zodiac cruise amid porpoising penguins. While wildlife is magnificent, ice defines the Antarctic. You’ll get to know ice up close and personal—from icebergs the size of islands, bergy bits and near-vertical glaciers, to the fragile, nearly invisible layers that have just begun to freeze. One day, you might set out by kayak to encounter towering icebergs at water level; embark on a Zodiac excursion in search of seals and blue-eyed shags; or walk amid thousands of Adélie and gentoo penguins. The next, you might experience the thrill of the ship crunching through pack ice. Everywhere you go in Antarctica, you’re surrounded by opportunities to capture uniquely beautiful images. Along the way, your expert expedition team will enrich every experience.

Meals included: breakfast, lunch, dinner

◇ DAY 9

King George Island / Disembark Ship

/ Puerto Natales, Chile

This morning finds the ship anchored off of King George Island. Home to a diverse assortment of wildlife, this island also has a human presence. Researchers from a wide range of countries, including the U.S., Chile, Argentina and Brazil, call the various stations home. Disembark and Zodiac from the ship to the rocky shoreline at King George Island, where you will be transferred to the hangar to await your flight. You will then be transferred to the gravel runway to board your flight back to Puerto Natales, where you will overnight at Hotel Costaustralis or Remota Patagonia Lodge (or similar).

Meals included: breakfast, lunch, dinner

■ DAY 10

Puerto Natales

Check out of your hotel and transfer to the airport to begin your journey homeward.

Departure Time: Outbound flights from Puerto Natales should depart no earlier than 1:00 p.m. local time (or as late in the day as possible).

Departure City: Puerto Natales, Chile

Meals included: breakfast

10-Day Sail-Fly

Ushuaia, Argentina → Puerto Natales, Chile

2026 DEPARTURE DATES

Aboard *National Geographic Explorer*

18 Nov				
07 Dec	26 Dec			

2027 DEPARTURE DATES

Aboard *National Geographic Explorer*

14 Jan				
02 Feb				
19 Nov				
08 Dec	27 Dec			

2028 DEPARTURE DATES

Aboard *National Geographic Explorer*

15 Jan				
03 Feb	22 Feb			

Alternative Routes

Visit Expeditions.com for more information.

2026 Departure Dates

19 Dec

2027 Departure Dates

07 Jan, 26 Jan, 14 Feb, 01 Dec, 20 Dec

2028 Departure Dates

08 Jan, 27 Jan, 15 Feb, 05 Mar



National Geographic Explorer

GUESTS

148

CABINS

81

Built to handle deep swells and towering waves, the *National Geographic Explorer* lends herself to globe-spanning travel and a dedication to curiosity and wonder.

Originally constructed for service along Norway's coast as part of the famed Hurtigruten, or Coastal Express, she ferried passengers among the fjords of this iconic coast in conditions that could deteriorate into heavy seas in a matter of minutes. She had to be able to handle deep swells and towering waves—and have a high degree of maneuverability. Those traits, and an ideal size, made her a natural choice for addition to the Lindblad fleet.

The plans to completely rebuild her drew on 50 years of pioneering expedition history and expertise. *National Geographic Explorer* was equipped with an ice-strengthened hull and advanced navigation equipment for polar expeditions; a roster of tools for exploration; and a well-appointed interior with vast expanses of glass for an unprecedented connection to the environment. Her interior and exterior design embodied the Lindblad expedition ethos—the privilege of wildness and the luxury of comfort.

For many guests she remains their paradigm of an expedition ship. She is devoted to exploration—from her Welcoming Bridge, and the Chart Room below it where you can tuck in to warm up with a hot chocolate, to her high-perched Observation deck with its aqueous light and compelling 24/7 views. Even the art on the walls— from the Hurley prints of Shackleton’s expedition to the stunning National Geographic photos— tells an uber- narrative of globe-spanning travel and a dedication to curiosity and wonder.

National Geographic Explorer is a state-of-the-art expedition ship. She is a fully stabilized, ice-class vessel, with an ice-reinforced hull, enabling her to navigate polar passages while providing exceptional comfort.

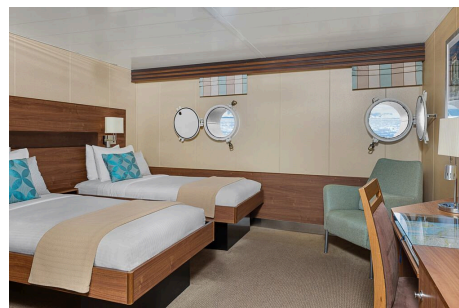


Cabin Categories

Category 1

MAIN DECK #301-308

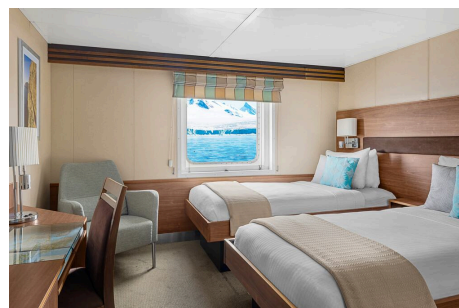
Cabins feature one or two portholes. Most cabins feature two single beds that can be converted to a queen. Cabins #301-306 feature one queen-sized bed. All cabins feature a writing desk, floor length mirror, reading lamps, well-appointed bathrooms with a roomy glass-wall shower, and a TV.



Category 2

MAIN DECK #317-320, 335-336

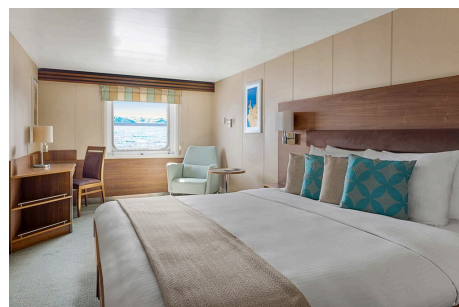
Cabins feature two single beds (some can convert to a queen-sized bed), and one large window. They offer a writing desk, floor length mirror, reading lamps, sitting chair, well-appointed bathrooms with a roomy glass-wall shower, and a TV.



Category 3

MAIN DECK #313-316, 321-328, 337-340, 342, 344, 348, 350

Cabins feature two single beds (some can convert to a queen-sized bed), one large window, and two sitting chairs and a small table and ample storage. They have a writing desk, floor length mirror, reading lamps, well-appointed bathrooms with a roomy glass-wall shower, and a TV. Cabins 341 & 343 have a sofa bed for a triple.



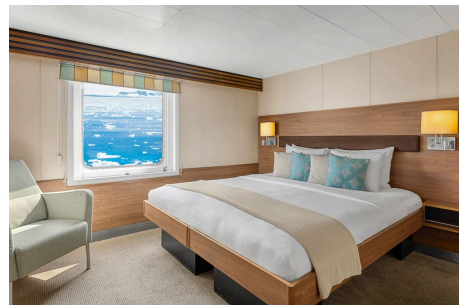
Category 4

UPPER DECK #201-202, 204-207, 210, 212, 217, 226, 228

Cabins feature two single beds and at least one large window. All cabins can convert between two single beds to a queen, except Cabins 217, 226 and 228, which feature one queen-size bed only. All cabins feature climate controls, sitting chairs and a TV. Bathrooms are also generously sized with a roomy, glass-walled shower stall.

VERANDA DECK #103-104, 107-108

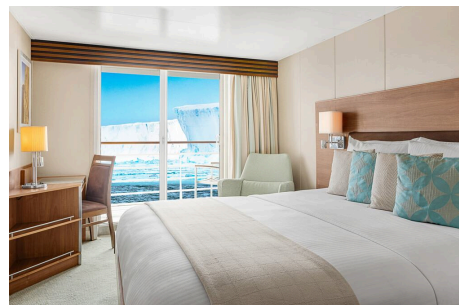
Cabins feature two single beds that can convert into a queen. They have a writing desk, floor length mirror, reading lamps, sitting chair, private bathrooms with a glass-wall shower, and a TV.



Category 5

UPPER DECK #209, 211, 214, 216, 218, 220-222, 224

Cabins feature a balcony with sliding glass doors, one queen-sized bed, writing desk, floor length mirror, reading lamps, private bathrooms with a glass-wall shower, and a TV. (Cabin 221 has two single beds that can convert to a queen.)



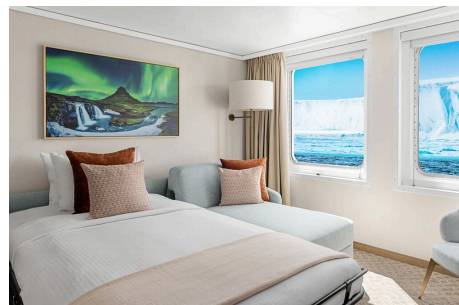
Category 6

UPPER DECK #213

This spacious cabin has a private balcony, two single beds that can be converted into a queen, a writing desk, double closet, bookcase, pull-out sofa, armchairs, two large windows and a TV. The sleeping area has a glass partition separating the living room. Bathrooms are generously sized with a roomy glass-walled shower stall and twin sinks.

VERANDA DECK #101-102

These spacious cabins can be converted into triples. They have two single beds that can be converted into a queen, a writing desk, double closet, bookcase, sofa-bed, chairs, two large windows and a TV. The sleeping area can be closed off with the glass partition. Bathrooms are generously sized with a roomy glass-walled shower stall and twin sinks.



Category 7

UPPER DECK #215, 219, 230

These large cabins with private balconies have two single beds that can convert to an Olympic-sized queen. They have seating areas with a sofa-bed and can be converted to triples. Cabins also include a desk with chairs, coffee table with sitting chair, and a small table. Bathrooms are generously sized with a roomy glass-walled shower stall and twin sinks.



Category A Solo

MAIN DECK #309-311, 329-334

These cabins feature one single bed and a large window, a writing desk, reading lamp, bathroom with a roomy glass-wall shower stall, and a TV.



Category B Solo

UPPER DECK #203, 208

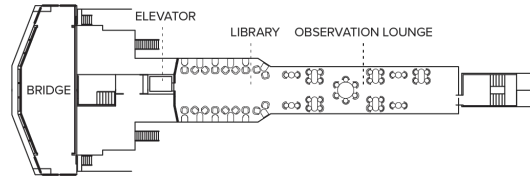
VERANDA DECK #105-106

These cabins feature one single bed and a large window, a writing desk, reading lamp, bathroom with a roomy glass-wall shower stall, and a TV.

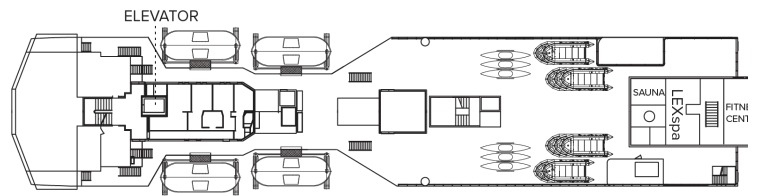


Deck Plans

Bridge Deck



Wellness Deck



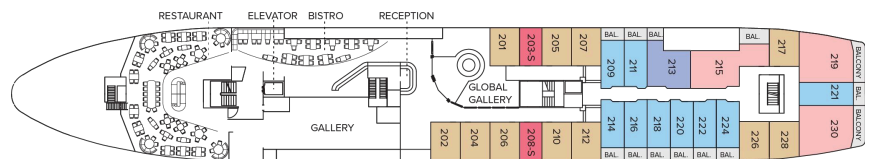
Veranda Deck

- Category 4
- Category 6
- Category B Solo



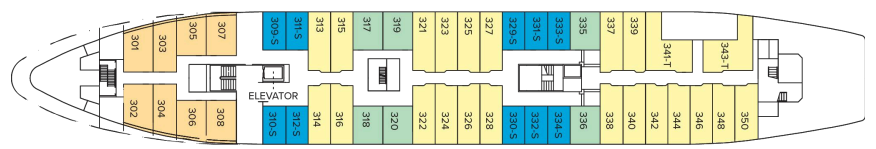
Upper Deck

- Category 4
- Category 5
- Category 6
- Category 7
- Category B Solo

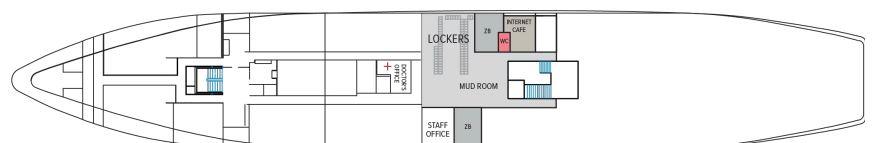


Main Deck

- Category 1
- Category 2
- Category 3
- Category 2 Solo



B Deck



Ship Amenities

Public Areas

Reception; three dining areas; global gallery; library, OM System photo locker; 24-hour Bistro area beverage bar; lounge with bar and state-of-the-art presentation facilities; observation lounge; mudroom with lockers for expedition gear; plus open access to the Bridge, the Captain, officers and on-duty wildlife spotters.

Meals

Meals are served in the dining room, Bistro bar or the Observation lounge, at a single seating with unassigned tables for an informal atmosphere and easy mingling. Menus feature sustainable choices, local where possible.

Cabins

81 outside cabins. All cabins face outside with windows or portholes, private bathroom and climate controls. Cabins are equipped with Wi-Fi, multiple electrical outlets, USB outlets, full length mirror and phones. TV featuring entertainment on demand, live feed for onboard presentations, bow camera and ship's position. Luxury bed linens and pillows. Botanically inspired shampoo, conditioner, shower gel and lotion are all available in cabin bathrooms, as well as an Expedition Essential Kit. Hair dryers, complimentary insulated water bottles and a National Geographic Atlas are available in each cabin.

Expedition Equipment

Zodiac landing craft, a fleet of double kayaks, a crow's nest camera, a hydrophone, underwater video cameras, video microscope and an ROV. Plus, for South Pacific voyages: snorkeling gear for all guests, scuba gear for a number of pre-qualified guests, stand-up paddleboards, glass-bottom Zodiac and splash-cam.

Special Features

A full-time doctor, undersea specialist, National Geographic photographer and National Geographic-Lindblad Expeditions certified photo instructor, internet café and laundry. Enjoy a session in the topside library with a good book.



Wellness

A glass-enclosed fitness center, outdoor stretching area, a LEXspa treatment room and sauna, staffed by wellness specialists.

Self-Disinfecting Ships

ACT Clean Coat™ is a light-activated, self-disinfecting cleaning process that continuously breaks down viruses, bacteria, mold, and airborne allergens across all ship surfaces. Not only does this create a cleaner, healthier shipboard environment for guests and crew alike, but this non-toxic, chemical-free system also saves more than one million gallons of water each year in our cleaning procedures, and reduces our carbon footprint as well as the amount of plastic and waste in our supply chain.

Special Offers

50% REDUCED DEPOSIT

Book between June 10 and August 18, 2026 and receive 50% off deposit at the time of booking on voyages departing October 1, 2026 through December 31, 2027 if booked outside of final payment. Remaining deposit balance is due at the time of final payment. Standard cancellation policy applies. Additional restrictions may apply. Offer valid for new bookings, subject to availability and offer may be withdrawn at any time without prior notice, not applicable on airfare or extensions, and may not be combined with other offers. Call for details.

SUITE EXCLUSIVES

Spacious living areas and incredible views immerse you in the beauty of your marine surroundings. Our new Suite Exclusives package helps make your voyage all the more memorable. [Learn more](#)

SAVE 5% TRAVELING AS A GROUP

Save 5% when traveling as a group of 8 or more people. Valid for new bookings only on select departures, subject to availability, not applicable on extensions, and may not be combined with other offers. Call for details.

CELEBRATE LIFE'S MILESTONES

Celebrate a milestone with a group of eight or more and enjoy a special amenity package including: 5% savings on voyage fares, custom group photo, US\$150 shipboard credit for the group, and other special

gifts. Milestone celebration to be communicated at time of booking.

PAY BY DEBIT: EARN A \$100 ONBOARD CREDIT

The \$100 onboard credit offer is applied after the final payment and requires 85% of the cost of the voyage to be placed on a debit card. Maximum of one \$100 onboard credit per cabin. The \$100 onboard credit is a non-refundable, non-transferable credit that can be used for various onboard purchases such as global gallery and spa treatments. It has no cash value, cannot be refunded if not fully utilized, and will be forfeited if not fully redeemed by the end of the voyage. This offer is combinable with other offers. If the booking is altered or canceled, the onboard credit may be forfeited, and it cannot be transferred if the booking is moved to another guest. Lindblad Expeditions reserves the right to modify or cancel the offer without prior notice. Offer applies to Lindblad Expeditions' owned ships only. Offer valid only for Debit Cards issued in the United States for payments made from the United States.

COMBINING OFFERS

Certain offers may be combinable, up to two savings opportunities, except where noted otherwise. For example, travel with a group of 8 or more on back-to-back expeditions, and take advantage of both savings.

INCLUDED IN PRICE

All accommodations aboard ship or in hotels per itinerary; all meals as indicated in the itinerary, both aboard and onshore; beer, wine, cocktails, liquors and spirits aboard the ship (except certain premium brands which are available for purchase); hors d'oeuvres, 24-hour access to snacks, premium coffees and teas, non-alcoholic beverages, and filtered water; excursions and airport transfers, as indicated in the itinerary, as indicated in the itinerary; crew gratuities; exploration tools curated to destination, such as Zodiacs, kayaks, snowshoes and cross-country skis; guidance and company of our leading expedition staff; assistance by the National Geographic photographer and National Geographic-Lindblad Expeditions certified photo instructor; Basic Wi-Fi aboard ship; complimentary reusable water bottle; access to the OM System Photo Gear Locker; presentations by expedition staff and expert guest speakers; complimentary parka; complimentary reusable water bottle; onboard physician consultations; morning stretch classes and 24-hour access to exercise equipment; 24-hour access to lounges, observation decks, library, and other shared spaces; park and site entrance fees, special access permits, and port taxes. Unused services or items included in our programs are non-refundable.

NOT INCLUDED IN PRICE

Airfare (except flights* when indicated as included); pre- and post-expedition extensions; additional hotel nights (except when indicated as included); private transfers; laundry, spa treatments, enhanced and premium Wi-Fi plans aboard expedition fleet; phone services (except when indicated as included); travel protection plans; and passport, visa, and immigration fees.

*Recommended flight costs include flight(s) that take place during the date range of your trip to transport travelers from one itinerary destination to another. This cost also includes ground transportation, luggage transfer, and airport assistance. If you prefer to arrange your own flights privately, have alternate means of transport, or wish to modify at a later time, please contact an Expedition Specialist at 1.833.400.0831

Additional costs associated with medical services outside onboard physician consultation.

For select voyages, completing a medical evaluation form with VIKAND is required. If you utilize your physician, VIKAND's processing fee for your documentation will be added to your National Geographic-Lindblad Expeditions invoice. If you utilize VIKAND's physicians, an additional charge will be due and payable directly to VIKAND.

TRAVEL PROTECTION PLAN

We strongly recommend our guests to take advantage of our Travel Protection Plan. This plan offers comprehensive coverage to protect you from cancellation fees, costs incurred due to trip delays/interruption, damage or loss of baggage, medical assistance, and evacuation during your travels. Our Travel Protection Plan is available for U.S. residents only, and may be purchased any time prior to final payment due date, Travel Protection premiums are non-refundable once plan is purchased. Learn more about our Travel Protection "Plus" Plan: <https://www.expeditions.com/terms-conditions/travel-protection-plan/>

CANCELLATION POLICY

Review our cancellation policy: <https://www.expeditions.com/cancellation-policy/>