







Europe & British and Irish Isles

55° 57' N 3° 11' W

# Celtic Coasts and Iberian Shores: Voyage from Edinburgh to Lisbon

Embark on a coastal expedition from Edinburgh to Lisbon, tracing the storied shores of the British Isles, France and the Iberian Peninsula. From the medieval strongholds of Northumberland to the maritime legacy of Portsmouth, the rugged beauty of Brittany and the Celtic echoes of Galicia, each stop reveals a new facet of Europe's rich heritage. Savor the flavors of Cornwall and Porto, walk ancient coastal paths and witness the dramatic landscapes that have shaped centuries of explorations. Experience it all as fall settles in, with harvests in full swing, fewer crowds and a slower, more immersive pace of life.

From  
**A\$ 11,604** / per person  
 Does not include flights

 <b>DATES</b> Apr, Sep and Oct	 <b>DURATION</b> 10-12 Days
 <b>SHIPS</b> National Geographic Endurance National Geographic Explorer	
 <b>STARTS AT</b> Edinburgh, Scotland	  <b>ENDS AT</b> Lisbon, Portugal

## Highlights

- ★ Compare coastal cultures shaped by Celtic, Roman and seafaring legacies as you journey from the United Kingdom to France, Spain and Portugal
- ★ Wander around Falmouth's vast natural harbor and medieval Pendennis Castle before trying some Cornish delicacies
- ★ Explore Portsmouth's rich military and seafaring heritage, highlighted by a visit to its historic dockyards
- ★ Discover the UNESCO World Heritage-designated Porto and taste its famed wine along the banks of the Douro River





# Day by day

■ DAY 1

## Edinburgh, Scotland / Embark Ship

Arrive in Edinburgh and transfer to the city center. Known throughout time for its hill fort, the iconic Edinburgh Castle, this vibrant city offers a variety of experiences throughout its streets. Explore the city at your own pace before embarking the *National Geographic Endurance* in the afternoon.

Meals included: dinner

◇ DAY 2

## Northumberland Coastline, England

Spend the day exploring the estuaries and beaches of Northumberland, the northernmost county in England, home to more than 400 different bird species. Once a medieval Anglo-Saxon kingdom encompassing present day northern England, this region is rich in striking coastlines and estuaries of the Tyne and Tweed rivers, as well as the ancient cities protecting this region for millennia.

Meals included: breakfast, lunch, dinner

◇ DAY 3

## At Sea

Spend a relaxing day at sea sailing along the British coast. Join your officers on the Bridge and learn about navigating through the English Channel or attend a presentation led by your naturalists. Take advantage of the amenities on board such as a rejuvenating spa treatment with the wellness specialist.

Meals included: breakfast, lunch, dinner

◇ DAY 4

## Portsmouth

Arrive this morning into the famous harbor of Portsmouth. The dockyards date back to the 1200s and are now a living museum combining present day naval operations of the Royal Naval fleet, along with historic ships on display such as King Henry VIII's flagship, the *Mary Rose* and a World War II submarine. For nature lovers and ancient history buffs, the surrounding areas of Portsmouth offer a wide range of conservation reserves and peaceful outlooks to soak in the rolling hills and estuaries.

Meals included: breakfast, lunch, dinner

◇ DAY 5

## Falmouth

Known for its deep natural harbor, Falmouth offers a glimpse into life on the Cornwall peninsula. The Southwest Coastal path provides an escape into the nature and landscapes of the region while the quaint streets of this seaside town will present an opportunity to try Cornish delicacies such as fresh-caught oysters or clotted cream. Alternatively, visit Pendennis Castle, built in the 1540s by Henry VIII to protect against invasions from France and the Roman Empire and later used as a secret World War II base.

Meals included: breakfast, lunch, dinner

◇ DAY 6

## Brittany, France

Natural promontories, pine forests and turquoise waters can be found throughout the Brittany region of France. These striking settings also form the backdrop to a unique cultural and culinary scene, inspired by Celtic traditions. Spend time hiking the coastal paths and relishing the relaxed pace of life in this idyllic setting.

Meals included: breakfast, lunch, dinner

◇ DAY 7

## At Sea

Spend another relaxing day at sea sailing along the French coast. Enjoy the day editing your photos, attending an expert-led presentation or lounging on the observation deck with views of the dynamic Bay of Biscay.

Meals included: breakfast, lunch, dinner

◇ DAY 8

## A Coruña, Spain

Known for its Roman-era lighthouse, the Tower of Hercules, A Coruña sits on a peninsula that creates a gateway to the stunning region of Galicia in northern Spain. At this last outpost of the Celtic nations linked through Cornwall and Brittany, keep a watchful eye and ear open for connections across these storied peninsulas. Choose from two options for the day. You could travel to Santiago de Compostela, where you'll walk a part of the famed path that leads to the city's legendary cathedral, visited by millions of pilgrims since its completion in the 12th century. Alternatively, explore the peninsulas and hidden coves that make this coastline so unique.

Meals included: breakfast, lunch, dinner

◇ DAY 9

## Porto, Portugal

Arrive in the UNESCO World Heritage Site of Porto this afternoon. The birthplace of port wine, Porto straddles a gorge on the beautiful Douro River, linked by numerous bridges and filled with medieval architecture. See the region's famous azulejo tiles and take in the views from the Ponte Dom Luis bridge, an iron masterpiece completed in 1886. Learn the secrets of port making during a tasting at a riverside port house.

Meals included: breakfast, lunch, dinner

■ DAY 10

## Lisbon / Disembark Ship

Disembark in Lisbon and transfer to the airport for flights home.

Meals included: breakfast

## 2026 (Southbound)

Edinburgh, Scotland → Lisbon, Portugal

### 2026 DEPARTURE DATES

Aboard *National Geographic Endurance*

28 Sep				
--------	--	--	--	--

## Alternative Routes

Visit [Expeditions.com](http://Expeditions.com) for more information.

### 2027 Departure Dates

---

14 Apr, 01 Oct

---



## National Geographic Endurance

GUESTS

138

CABINS

76

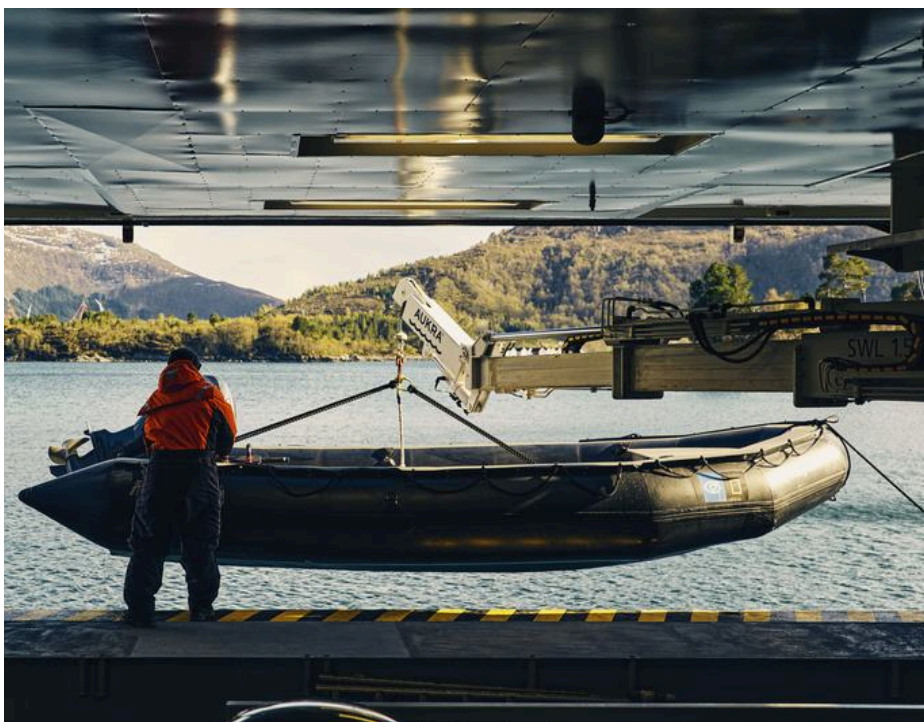
**The most advanced ice-class expedition ship afloat, the *National Geographic Endurance* offers unprecedented access to polar regions.**

The first new polar build in Lindblad's 50-year history, *National Geographic Endurance* is named to honor explorer Ernest Shackleton and his legendary Transantarctic Expedition.

A fully-stabilized vessel of the highest ice class (PC5 Category A), she will enable adventurous guests to go where few have or can. Endurance's most striking exterior feature is her distinctive profile, the patented X-Bow®, a game-changing design that guarantees the smoothest, most comfortable ride in all kinds of conditions; and since it eliminates bow impact, a quieter ride, as well.

An equally impressive feature may well be her capacity: she carries just 138 guests, a commitment to expedition excellence over scale. Scandinavian-inflected, luxuriously appointed, her inviting interiors would be a destination in themselves. Because she is a Lindblad expedition ship, however, her attention is focused on the world outside –with acres of window glass to keep you connected to the stunning views beyond the pane, and a fleet of expedition tools to get you out exploring.

*National Geographic Endurance* and *National Geographic Resolution* are next-generation expedition ships, purpose-built for polar navigation. Fully stabilized, highly strengthened, ice-class Polar Code PC5 (Category A) vessels, they are designed to navigate polar passages year-round, and safely explore uncharted waters, while providing exceptional comfort. The patented X-bow<sup>®</sup> is key to their design; its powerful wave-slicing action provides an extremely smooth ride even in adverse conditions, and even reduces spray on deck for superior observation. They carry a full suite of expedition tools and offer a variety of experience-enhancing amenities.



# Cabin Categories

## Category 1

FORE DECK #406, 408, 411, 413, 415

Fore Deck, with two large windows, two singles that can convert to a queen, armchair, writing desk and chair, two bedside tables, window sofa and a closet.



## Category 2

FORE DECK #410, 412, 414, 416-419, 421-427

Fore Deck, with two large windows, two single beds that can convert to a queen, window sofa, 2 seat sofa, coffee table, armchair, writing desk with an office chair, two bedside tables and a closet.



## Category 3

MAIN DECK #512, 514-524

Suite with balcony that features two balcony chairs, hammock, and a table; two single beds that convert to a queen, convertible sleeper sofa, writing desk with a chair, two bedside tables and a closet.



## Category 4

LOUNGE DECK #608, 610, 612, 613-623

Suite with balcony that features two balcony chairs, hammock, and a table; two single beds that convert to a queen, convertible sleeper sofa, writing desk with a chair, two bedside tables and a closet.



## Category 5

BRIDGE DECK #700-707, 712, 713, 715, 717

Cabin with balcony that features two balcony chairs, hammock, and a table; two single beds that convert to a queen; convertible sleeper sofa; coffee table; writing desk with chair; two bedside tables; and a closet.



## Category 6

BRIDGE DECK #714

Junior suite with balcony that features two balcony chairs, hammock, and table; two single beds that convert to a queen; pull-out sofa; writing desk with chair; two bedside tables; coffee table; espresso maker; and a closet. Guests receive a welcome amenity, complimentary laundry, priority access to one igloo reservation, and one spa appointment per departure.



## Category 7

BRIDGE DECK #708-711, 716, 718, 719, 721

These large balcony suites feature two balcony chairs, hammock, and table; two single beds that can convert to a queen; pull-out sofa; coffee table; writing desk and chair; espresso maker; hammock; and a large walk-in closet with full length mirror. Expanded bathroom has a double vanity, bathtub, towel warmer, and rain shower. Guests receive a welcome amenity, complimentary laundry, priority access to one igloo reservation, and one spa appointment per departure.



## Category A Solo

MAIN DECK #504, 506-511, 513

Suite with balcony that features two balcony chairs and a table; single bed, writing desk with an office chair, bedside table, and a closet.



## Category B Solo

LOUNGE DECK #604-607, 609, 611

Suite with balcony that features two balcony chairs, hammock, and a table; single bed, bedside table, writing desk with chair, hammock, and a closet.



# Deck Plans

## Observation Deck



## Bridge Deck

- Category 5
- Category 6
- Category 7



## Lounge Deck

- Category 4
- Category B Solo



## Main Deck

- Category 3
- Category 2 Solo

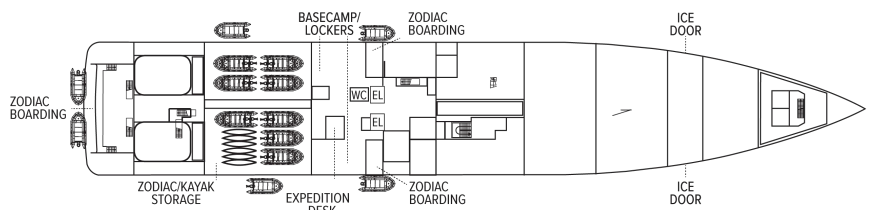


## Fore Deck

- Category 1
- Category 2



## Expedition Deck



# Ship Amenities

## Public Areas

Reception; three dining areas; an observation lounge with bar, gym, wellness area, infinity-style outdoor hot tubs with adjacent igloos; library; main lounge with full service bar, 24-hour beverage station, state-of-the-art tech for films/presentations; OM System photo locker and a photo workshop area; science hub; an onboard broadcast studio; an expedition base with lockers for expedition gear; and open access to the Bridge, Captain, officers and on-duty wildlife spotters.

## Meals

Restaurant 270° features wrap-around views; two other dining areas offer lighter, made-to-order fare or intimate, small group dinners. All feature sustainable choices, local where possible, and unassigned, flexible, inclusive seating.

## Cabins

All cabins face outside with large windows, private bathroom, and climate controls. Cabins are equipped with expedition command centers with iPad tablets, multiple electrical and USB outlets, TVs, with on demand entertainment, phone, Wi-Fi, clock, barometers, hygrometers, vanity mirror, mini refrigerator, small safe, ice bucket, glasses, hair dryer, reading lights and National Geographic Atlas. Luxury linens and pillows. Bathrooms outfitted with rain showers & hand held shower, botanically inspired shampoo, conditioner, shower gel and lotion. Complimentary insulated water bottles. Balcony cabins have hammocks, chairs and table.

## Expedition Equipment

Zodiac landing craft, kayaks, snowshoes, cross-country skis, an ROV and underwater video camera for unique access to the polar undersea, hydrophone, aerial remote-controlled camera and video microscope.

## Special Features

A full-time doctor, undersea specialist, National Geographic photographer, National Geographic-Lindblad Expeditions certified photo instructor and video chronicler, an internet cafe and laundry. A forward and aft staircase, and elevators, reach all decks. Echoing the pioneering installation aboard *National Geographic Endurance*, artist Zaria Forman has curated a new exhibit featuring a wide range of artists.



## Wellness

A glass-enclosed yoga studio, gym, treatment rooms and spa relax area, and high and low-heat saunas with ocean views, staffed by wellness specialists.

## Self-Disinfecting Ships

ACT Clean Coat™ is a light-activated, self-disinfecting cleaning process that continuously breaks down viruses, bacteria, mold, and airborne allergens across all ship surfaces. Not only does this create a cleaner, healthier shipboard environment for guests and crew alike, but this non-toxic, chemical-free system also saves more than one million gallons of water each year in our cleaning procedures, and reduces our carbon footprint as well as the amount of plastic and waste in our supply chain.



## *National Geographic Explorer*

GUESTS

148

CABINS

81

**Built to handle deep swells and towering waves, the *National Geographic Explorer* lends herself to globe-spanning travel and a dedication to curiosity and wonder.**

Originally constructed for service along Norway's coast as part of the famed Hurtigruten, or Coastal Express, she ferried passengers among the fjords of this iconic coast in conditions that could deteriorate into heavy seas in a matter of minutes. She had to be able to handle deep swells and towering waves—and have a high degree of maneuverability. Those traits, and an ideal size, made her a natural choice for addition to the Lindblad fleet.

The plans to completely rebuild her drew on 50 years of pioneering expedition history and expertise. *National Geographic Explorer* was equipped with an ice-strengthened hull and advanced navigation equipment for polar expeditions; a roster of tools for exploration; and a well-appointed interior with vast expanses of glass for an unprecedented connection to the environment. Her interior and exterior design embodied the Lindblad expedition ethos—the privilege of wildness and the luxury of comfort.

For many guests she remains their paradigm of an expedition ship. She is devoted to exploration—from her Welcoming Bridge, and the Chart Room below it where you can tuck in to warm up with a hot chocolate, to her high-perched Observation deck with its aqueous light and compelling 24/7 views. Even the art on the walls— from the Hurley prints of Shackleton’s expedition to the stunning National Geographic photos— tells an uber- narrative of globe-spanning travel and a dedication to curiosity and wonder.

*National Geographic Explorer* is a state-of-the-art expedition ship. She is a fully stabilized, ice-class vessel, with an ice-reinforced hull, enabling her to navigate polar passages while providing exceptional comfort.

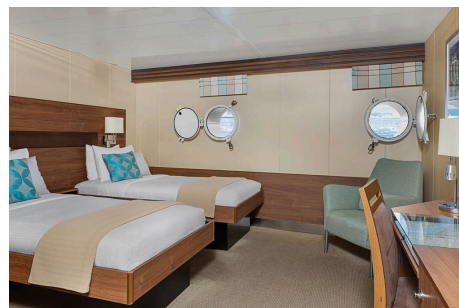


# Cabin Categories

## Category 1

MAIN DECK #301-308

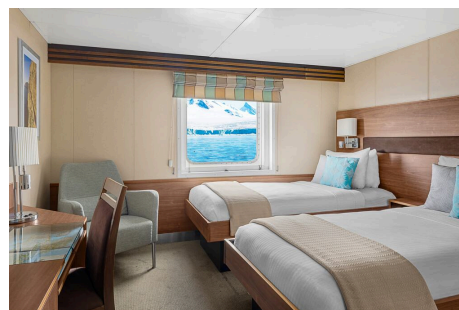
Cabins feature one or two portholes. Most cabins feature two single beds that can be converted to a queen. Cabins #301-306 feature one queen-sized bed. All cabins feature a writing desk, floor length mirror, reading lamps, well-appointed bathrooms with a roomy glass-wall shower, and a TV.



## Category 2

MAIN DECK #317-320, 335-336

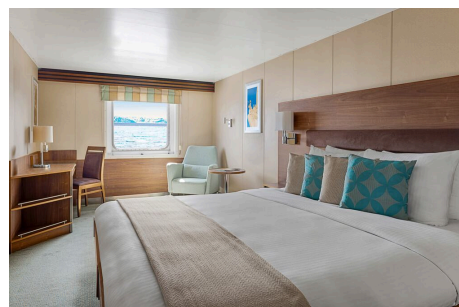
Cabins feature two single beds (some can convert to a queen-sized bed), and one large window. They offer a writing desk, floor length mirror, reading lamps, sitting chair, well-appointed bathrooms with a roomy glass-wall shower, and a TV.



## Category 3

MAIN DECK #313-316, 321-328, 337-340, 342, 344, 348, 350

Cabins feature two single beds (some can convert to a queen-sized bed), one large window, and two sitting chairs and a small table and ample storage. They have a writing desk, floor length mirror, reading lamps, well-appointed bathrooms with a roomy glass-wall shower, and a TV. Cabins 341 & 343 have a sofa bed for a triple.



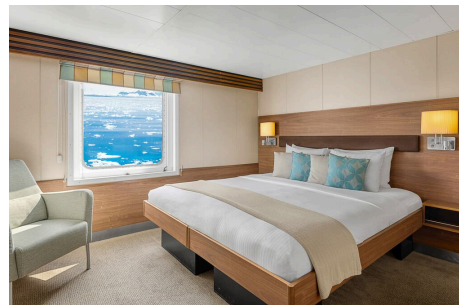
## Category 4

UPPER DECK #201-202, 204-207, 210, 212, 217, 226, 228

Cabins feature two single beds and at least one large window. All cabins can convert between two single beds to a queen, except Cabins 217, 226 and 228, which feature one queen-size bed only. All cabins feature climate controls, sitting chairs and a TV. Bathrooms are also generously sized with a roomy, glass-walled shower stall.

VERANDA DECK #103-104, 107-108

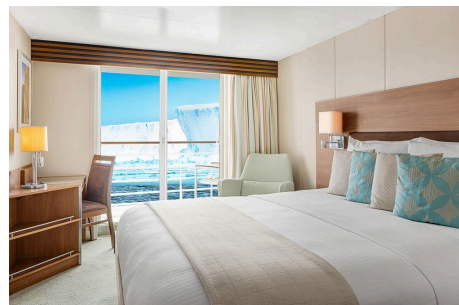
Cabins feature two single beds that can convert into a queen. They have a writing desk, floor length mirror, reading lamps, sitting chair, private bathrooms with a glass-wall shower, and a TV.



## Category 5

UPPER DECK #209, 211, 214, 216, 218, 220-222, 224

Cabins feature a balcony with sliding glass doors, one queen-sized bed, writing desk, floor length mirror, reading lamps, private bathrooms with a glass-wall shower, and a TV. (Cabin 221 has two single beds that can convert to a queen.)



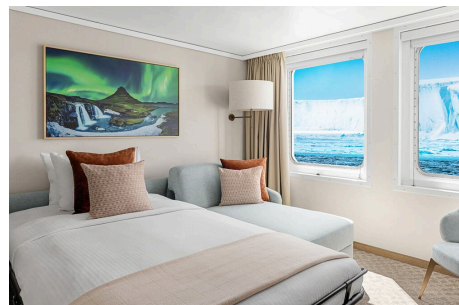
## Category 6

UPPER DECK #213

This spacious cabin has a private balcony, two single beds that can be converted into a queen, a writing desk, double closet, bookcase, pull-out sofa, armchairs, two large windows and a TV. The sleeping area has a glass partition separating the living room. Bathrooms are generously sized with a roomy glass-walled shower stall and twin sinks.

VERANDA DECK #101-102

These spacious cabins can be converted into triples. They have two single beds that can be converted into a queen, a writing desk, double closet, bookcase, sofa-bed, chairs, two large windows and a TV. The sleeping area can be closed off with the glass partition. Bathrooms are generously sized with a roomy glass-walled shower stall and twin sinks.



## Category 7

UPPER DECK #215, 219, 230

These large cabins with private balconies have two single beds that can convert to an Olympic-sized queen. They have seating areas with a sofa-bed and can be converted to triples. Cabins also include a desk with chairs, coffee table with sitting chair, and a small table. Bathrooms are generously sized with a roomy glass-walled shower stall and twin sinks.



## Category A Solo

MAIN DECK #309-311, 329-334

These cabins feature one single bed and a large window, a writing desk, reading lamp, bathroom with a roomy glass-wall shower stall, and a TV.



## Category B Solo

UPPER DECK #203, 208

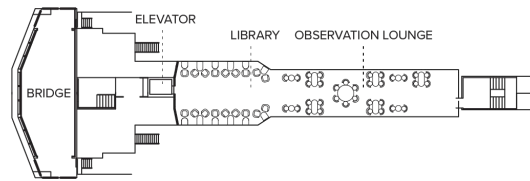
VERANDA DECK #105-106

These cabins feature one single bed and a large window, a writing desk, reading lamp, bathroom with a roomy glass-wall shower stall, and a TV.

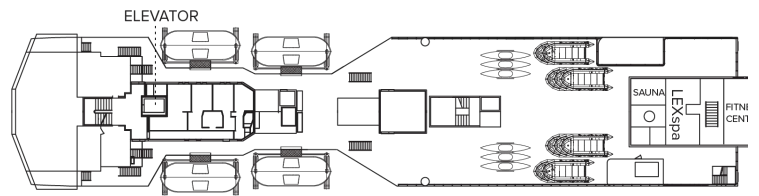


# Deck Plans

## Bridge Deck

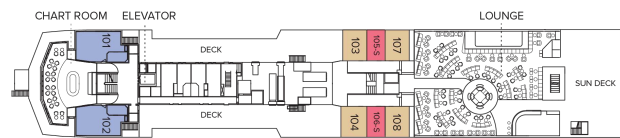


## Wellness Deck



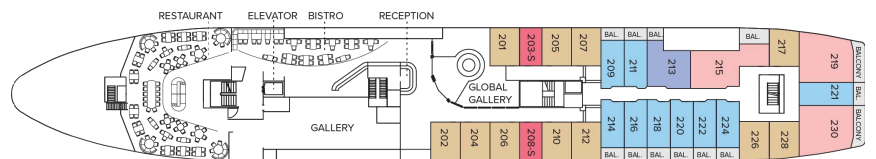
## Veranda Deck

- Category 4
- Category 6
- Category B Solo



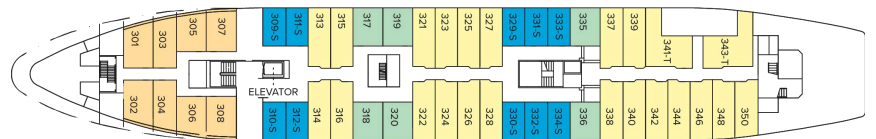
## Upper Deck

- Category 4
- Category 5
- Category 6
- Category 7
- Category B Solo

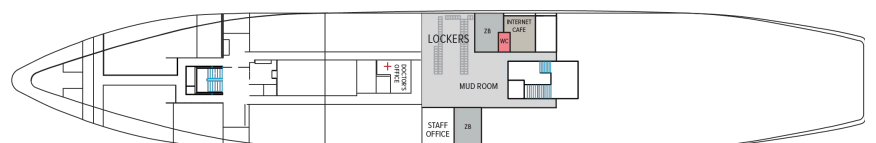


## Main Deck

- Category 1
- Category 2
- Category 3
- Category 2 Solo



## B Deck



# Ship Amenities

## Public Areas

Reception; three dining areas; global gallery; library, OM System photo locker; 24-hour Bistro area beverage bar; lounge with bar and state-of-the-art presentation facilities; observation lounge; mudroom with lockers for expedition gear; plus open access to the Bridge, the Captain, officers and on-duty wildlife spotters.

## Meals

Meals are served in the dining room, Bistro bar or the Observation lounge, at a single seating with unassigned tables for an informal atmosphere and easy mingling. Menus feature sustainable choices, local where possible.

## Cabins

81 outside cabins. All cabins face outside with windows or portholes, private bathroom and climate controls. Cabins are equipped with Wi-Fi, multiple electrical outlets, USB outlets, full length mirror and phones. TV featuring entertainment on demand, live feed for onboard presentations, bow camera and ship's position. Luxury bed linens and pillows. Botanically inspired shampoo, conditioner, shower gel and lotion are all available in cabin bathrooms, as well as an Expedition Essential Kit. Hair dryers, complimentary insulated water bottles and a National Geographic Atlas are available in each cabin.

## Expedition Equipment

Zodiac landing craft, a fleet of double kayaks, a crow's nest camera, a hydrophone, underwater video cameras, video microscope and an ROV. Plus, for South Pacific voyages: snorkeling gear for all guests, scuba gear for a number of pre-qualified guests, stand-up paddleboards, glass-bottom Zodiac and splash-cam.

## Special Features

A full-time doctor, undersea specialist, National Geographic photographer and National Geographic-Lindblad Expeditions certified photo instructor, internet café and laundry. Enjoy a session in the topside library with a good book.



## Wellness

A glass-enclosed fitness center, outdoor stretching area, a LEXspa treatment room and sauna, staffed by wellness specialists.

## Self-Disinfecting Ships

ACT Clean Coat™ is a light-activated, self-disinfecting cleaning process that continuously breaks down viruses, bacteria, mold, and airborne allergens across all ship surfaces. Not only does this create a cleaner, healthier shipboard environment for guests and crew alike, but this non-toxic, chemical-free system also saves more than one million gallons of water each year in our cleaning procedures, and reduces our carbon footprint as well as the amount of plastic and waste in our supply chain.

## Special Offers

### SAVE 5% TRAVELING AS A GROUP

Save 5% when traveling as a group of 8 or more people. Valid for new bookings only on select departures, subject to availability, not applicable on extensions, and may not be combined with other offers. Call for details.

---

### 10% OFF BACK-TO-BACK VOYAGES

Save 10% on consecutive departures, applicable on voyage fares only and not valid on extensions or airfare. Valid for new bookings only, subject to availability, and may not be combined with other offers. Call for details.

---

### CELEBRATE LIFE'S MILESTONES

Celebrate a milestone with a group of eight or more and enjoy a special amenity package including: 5% savings on voyage fares, custom group photo, US\$150 shipboard credit for the group, and other special gifts. Milestone celebration to be communicated at time of booking.

---

### COMBINING OFFERS

Certain offers may be combinable, up to two savings opportunities, except where noted otherwise. For example, travel with a group of 8 or more on back-to-back expeditions, and take advantage of both savings.

## TRAVEL PROTECTION PLAN

We strongly recommend our guests to take advantage of our Travel Protection Plan. This plan offers comprehensive coverage to protect you from cancellation fees, costs incurred due to trip delays/interruption, damage or loss of baggage, medical assistance, and evacuation during your travels. Our Travel Protection Plan is available for U.S. residents only, and may be purchased any time prior to final payment due date, Travel Protection premiums are non-refundable once plan is purchased. Learn more about our Travel Protection "Plus" Plan: <https://www.expeditions.com/terms-conditions/travel-protection-plan/>

---

## CANCELLATION POLICY

Review our cancellation policy: <https://www.expeditions.com/cancellation-policy/>