








Galápagos & South America  
 0° 57' S 90° 57' W

# Ultimate Galápagos

Experience our most encompassing Galápagos expedition—an extended voyage that reveals the full breadth of this legendary archipelago. Sailing aboard the *National Geographic Endeavour II*, you'll enjoy 13 days of exploration in the company of local experts and a veteran expedition team. Walk among wildlife unfazed by your presence, snorkel crystal-clear waters teeming with marine life and witness the ecosystems that inspired Darwin's theory of evolution. With more time in the islands than any other itinerary, this journey offers the deepest immersion into one of Earth's most biodiverse environments—where every day brings new discoveries above and below the water.

From  
**£10,005** / per person  
 Does not include flights

<p> <b>DATES</b>                  Jan, Feb, Mar, Apr, May, Jun, Jul, Aug, Oct, Nov and Dec</p>	<p> <b>DURATION</b>                  17 Days</p>
<p> <b>SHIPS</b>  <i>National Geographic Endeavour II</i></p>	
<p> <b>STARTS AT</b>                  Quito, Ecuador</p>	<p>→  <b>ENDS AT</b>                  Quito, Ecuador</p>

# Highlights

- ★ Visit 11 islands on our most wide-ranging Galápagos voyage, including remote Genovesa—a flooded caldera teeming with over a million seabirds, from frigatebirds and owls to all three of the archipelago’s booby species
  
- ★ Discover the archipelago from the purpose-built *National Geographic Endeavour II*—expertly designed with generous deck space for wildlife viewing and accompanied by our largest naturalist team in the islands
  
- ★ Encounter iconic species in their natural habitats, from giant tortoises roaming volcanic highlands to blue-footed boobies engaged in courtship displays
  
- ★ Snorkel daily in the Galápagos Marine Reserve’s crystal-clear waters, encountering sea lions, sea turtles, rays and abundant endemic fish





# Day by day

## ■ DAY 1

### Quito, Ecuador

Arrive in Quito, Ecuador’s historic Andean capital, where you’ll be met and transferred to your hotel for an overnight stay. Set at 9,350 feet and surrounded by dramatic volcanic peaks, Quito offers a striking introduction to your journey. You may choose to arrive early to explore more of the city or join a pre-voyage extension to Mashpi Reserve in the tropical Andes.

Meals included: breakfast, lunch, dinner

## ◇ DAY 2

### Quito / Galápagos Islands / Embark Ship

In the morning, if you’re joining the recommended flight to the Galápagos Islands, transfers to the airport and luggage assistance will be provided. Upon arrival, embark the ship.

Meals included: breakfast, lunch, dinner

## ◇ DAYS 3-15

### Galápagos Islands

This extended exploration offers the rare opportunity to visit all of the remarkable islands listed below. Each day brings new discoveries—from ancient volcanic landscapes and untamed wilderness to wildlife-rich shores teeming with endemic species—providing the optimal balance of everything that makes the Galápagos extraordinary. All ship itineraries are subject to Galápagos National Park regulations.

Please note that Day 9 will mark a transition, as some guests conclude their voyage while others embark to begin their adventure. Some staff may

also rotate, bringing fresh energy and expertise for the journey ahead. During this turnaround, you’ll explore a new site on shore with a naturalist.

**North Seymour:** Follow coastal trails past playful Galápagos sea lions on this wildlife-rich central island. Continue inland through a silvery forest of endemic palo santo trees, where frigatebirds nest, blue-footed boobies dance and where you may also encounter prehistoric-looking land iguanas feeding on cactus.

**Rabida:** Step ashore on striking red-sand beaches and snorkel in the shallows alongside Galápagos sea lions and vibrant tropical fish. Later, enjoy a nature or photo walk to spot hawks, other terrestrial birds, and—at times—flamingos in a small saltwater lagoon.

**Isabela:** Raise a toast as you cross the Equator at Volcán Ecuador, the northernmost of Isabela’s six great shield volcanoes. Watch for whales, dolphins, sea turtles and the elusive ocean sunfish along the way. Over two days, explore these dramatically eroded volcanic shores in the footsteps of Darwin and Melville, encountering abundant wildlife and remarkable geology. Zodiac cruise along the coast in search of Galápagos penguins and fur seals, and snorkel among green sea turtles and shimmering schools of endemic fish.

**Fernandina:** One of the most active oceanic volcanoes in the world, Fernandina is the youngest and most untamed island in Galápagos—and home to the strange flightless cormorant, Galápagos penguins and the largest marine iguana colonies in the archipelago. Hike across recent black lava flows alongside scampering Sally Lightfoot crabs and sea lions playing in tidepools.

**Española:** Located in the far southeastern reaches

of the archipelago, Española is home to an extraordinary array of wildlife, including red and black marine iguanas, swallow-tailed gulls, Nazca boobies and endemic mockingbirds and lava lizards. Seasonally, Punta Suárez also hosts the world's only breeding population of waved albatrosses. Snorkel and kayak alongside playful sea lions and colorful fish at Gardner Bay, then set out on an afternoon walk at Punta Suárez to encounter more of the island's remarkable species.

**Floreana:** Follow a trail past a pink-tinted lagoon frequented by flamingos. Snorkel among sea lions and abundant fish or cruise along Champion Islet by Zodiac. Visit the famous wooden barrel at Post Office Bay and learn about its unusual postal system.

**Santa Cruz:** Visit Puerto Ayora, the largest town and headquarters of both the Galápagos National Park and Charles Darwin Research Station. See the monument to Lonesome George and tour the giant tortoise breeding corrals. Witness giant tortoises roaming in the wild in the lush, green highlands.

**Bartolomé:** Hike to the summit of a 300-foot volcanic cone for sweeping panoramic views. Later, snorkel or join a glass-bottom boat excursion around the base of iconic Pinnacle Rock, where you may spot sea lions, small reef sharks, and even Galápagos penguins.

**Santiago:** Explore tide pools and look for fur seals sheltered in quiet grottos of black basalt. Swim, snorkel, kayak and paddleboard along Santiago's spectacular coast, and explore an enchanting coastal forest where Charles Darwin once walked.

**Genovesa:** Sail across the Equator to the remote northern realm of the Galápagos into this flooded caldera, home to over one million seabirds. Visit Prince Philip's Steps at the top of the island. Highlights along the trail are many, from Nazca,

red-footed and blue-footed boobies and frigates, to gulls, owls, fur seals, hammerhead sharks, turtles and manta rays.

**San Cristobal:** Search for red-footed boobies and the endemic mockingbird and lava lizard—found only on this easternmost island. Walk along the powdery white sand at a gorgeous beach fronted by iconic Kicker Rock. Explore Baquerizo Moreno, where sea lions thrive in the middle of town.

Meals included: breakfast, lunch, dinner

◇ DAY 16

## Galápagos Islands / Disembark Ship / Quito

Disembark this morning and join the recommended flight to Quito; transfers to the airport and luggage assistance will be provided. In Quito, choose from several hotel options, including a convenient airport hotel. The afternoon and evening are at your leisure. You may be able to take advantage of overnight flights home. Ask your expedition specialist about post-voyage extensions and additional options in Quito and beyond.

Meals included: breakfast

■ DAY 17

## Quito

After breakfast, transfer to the airport and board flights home, unless you have arranged for additional nights or an extension.

**Departure Time:** Anytime on day 17, or after 7:00 p.m. local time on day 16.

**Departure City:** Quito, Ecuador

Meals included: breakfast

## Expedition

Quito, Ecuador → Quito, Ecuador

### 2027 DEPARTURE DATES

Aboard *National Geographic Endeavour II*

08 Jan	22 Jan			
05 Feb	19 Feb			
05 Mar	19 Mar			
02 Apr	16 Apr	30 Apr		
14 May	28 May			
11 Jun	25 Jun			
09 Jul	23 Jul			
06 Aug	20 Aug			
01 Oct	15 Oct	29 Oct		
12 Nov	26 Nov			
10 Dec	24 Dec			

### 2028 DEPARTURE DATES

Aboard *National Geographic Endeavour II*

07 Jan	21 Jan			
04 Feb				
03 Mar	17 Mar			



## *National Geographic Endeavour II*

GUESTS

96

CABINS

52

**Our latest and most family-friendly ship, the *National Geographic Endeavour II* is exceptionally nimble and maneuverable.**

Born in the cold waters of Patagonia, National Geographic Endeavour II was built for heavy seas. Now, permanently stationed in Galápagos, she comfortably sails the Equator.

A floor-to-ceiling rebuild when she repositioned to the tropics meant she could be crafted to perfectly accommodate the Lindblad style of travel. Where she previously carried 136 passengers, she now accommodates just 96 guests in 52 thoughtfully appointed cabins. She is exceptionally nimble and maneuverable,

with a shallow draft to get up close, great viewing from all public spaces, an expansive open-air observation deck, large windows in cabins and suites, and state-of-the-art tools for exploration including a glass-bottom boat, underwater cameras, video microscope, plus kayaks and stand-up paddleboards.

She replaced the beloved *National Geographic Endeavour*, which donated much of her artwork and her great spirit of camaraderie. Guests have described being aboard *National Geographic Endeavour II* as feeling like a cross between a grand floating hotel and scientific research vessel. She is beyond comfortable, and welcoming to solos, groups, and kids of all ages, and equipped for the up-close and personal explorations that makes Galápagos the trip of a lifetime.

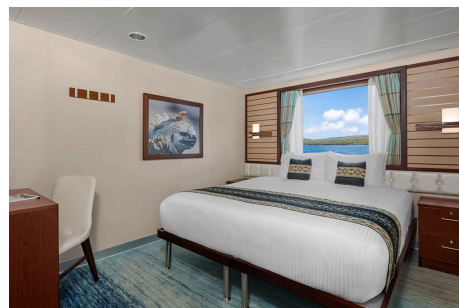


# Cabin Categories

## Category 1

UPPER DECK, FORWARD #201, 202

All cabins face outside with a large window, two single beds that can convert to a queen-sized bed. Furniture includes an armchair, desk, two nightstands, and a closet.



## Category 2

UPPER DECK #211, 213-217, 219, 221-222, 224-229

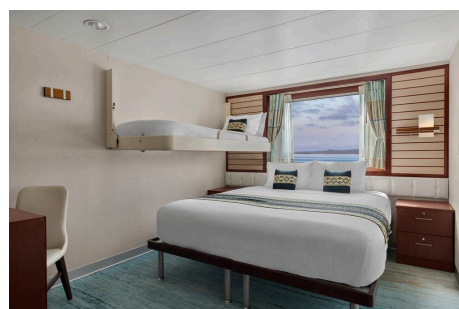
All cabins feature two single beds that can be converted to a queen-sized bed with a large window. Furniture includes an armchair, desk, two nightstands, and a closet. Cabins 224 and 225 can accommodate a third person with a fold-down murphy bed. Cabins 226/228 and 227/229 are interlocking with a connecting door.



## Category 3

LOUNGE DECK #311, 313-319, 321, 322, 324, 326, 328, 330

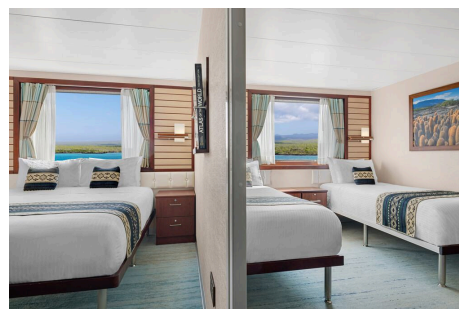
All cabins face outside with a large window, two single beds that can convert to a queen-sized bed. Furniture includes an armchair, desk, 2 nightstands and a closet. Cabins 326 & 328 can accommodate a third person with a fold-down murphy bed. Cabins 315/317, 316/318, and 320/322 are interlocking with a connecting door.



## Category 4

BRIDGE DECK #409, 411-414, 416, 418

All cabins are outside with a large window, two single beds that can convert to a queen-sized bed. Furniture includes an armchair, desk, two nightstands, and closet. Cabins 411/413 and 416/418 are interlocking with a connecting door.



### Shared Accommodations:

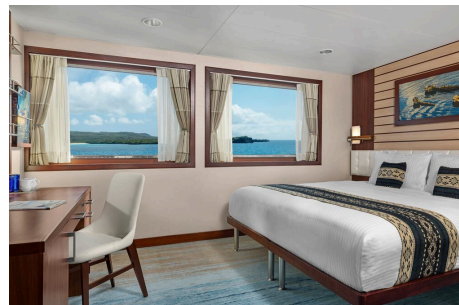
Connecting cabins are perfect for families or groups of friends. In all, seven cabins can be connected. Triple and solo cabins are available too, to welcome all types of travelers.

## Suite A

LOUNGE DECK, MID-SHIP; BRIDGE DECK, MID-SHIP #320, 424

Cabin features two large windows, armchair, large suite-sized bathroom, double closet, writing desk and chair, mini-fridge, two large windows and two nightstands. 2 single beds that can convert to a queen. This suite and cabin 322 are interlocking with a connecting door.

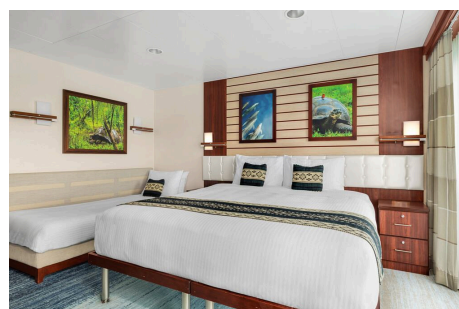
*Suite 424 is available for booking on voyages departing after September 26, 2026.*



## Suite B

BRIDGE DECK, MID-SHIP #420, 422

These suites feature floor-to-ceiling windows that provide incredible views and natural sunlight. Furniture includes a sofa that converts to a single bed, a double closet, writing desk and chair, two nightstands, mini fridge, and large suite-sized bathroom. Cabins have two single beds that can be converted to a queen.



## Suite C

BRIDGE DECK, MID-SHIP #415

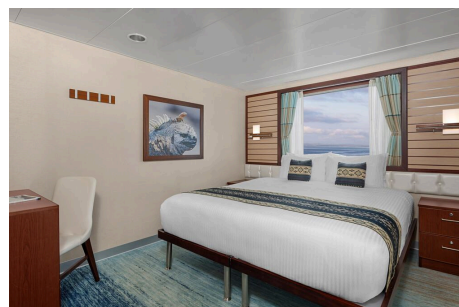
This suite is the largest cabin aboard with a separate well-appointed separate seating area. The seating area includes a sofa that converts to a single bed, writing desk, lounge chair, coffee table, armchair and mini fridge. The cabin features two single beds that convert to a queen, two nightstands, extra closet space, and a large suite bathroom.



## Category 2 Solo

UPPER DECK #203-209

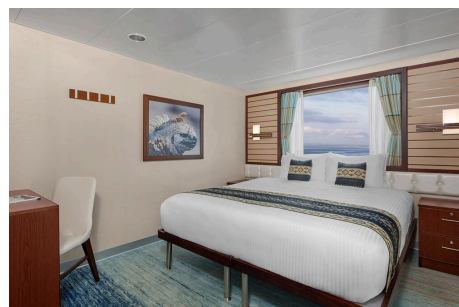
These cabins face outside with a large window with either a wide single bed, or two singles that can convert to a queen. In the cabin you will also find an armchair, desk, two nightstands, and a closet. Equal in size and amenities to other Category 2 cabins.



## Category 3 Solo

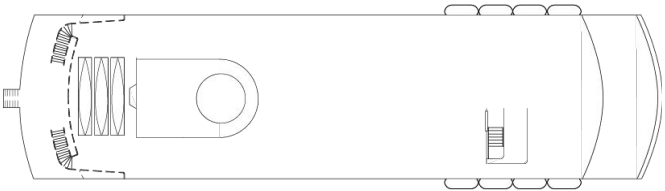
LOUNGE DECK #325, 327

These cabins face outside with a large window and two single beds that convert to a queen. In the cabins you will also find an armchair, desk, two nightstands, and a closet. Equal in size and amenities to other category 3 cabins.



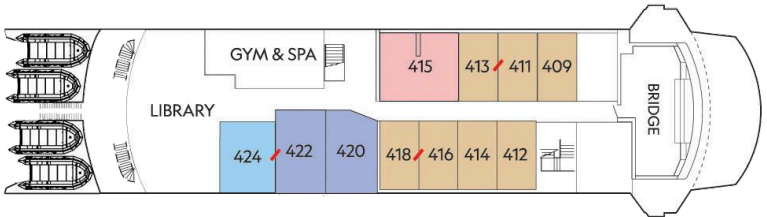
# Deck Plans

## Observation Deck



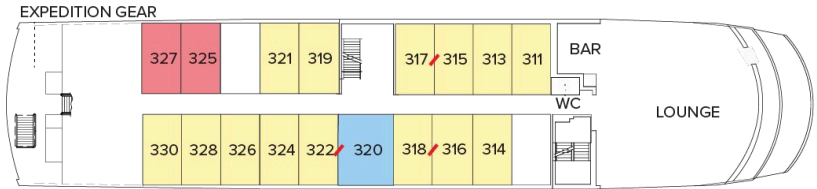
## Bridge Deck

- Category 4
- Suite A
- Suite B
- Suite C



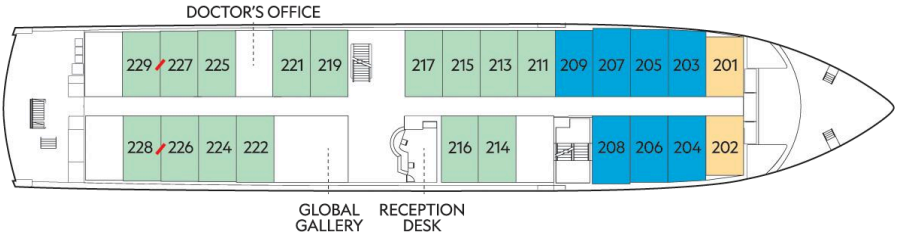
## Lounge Deck

- Category 3
- Suite A
- Category 3 Solo

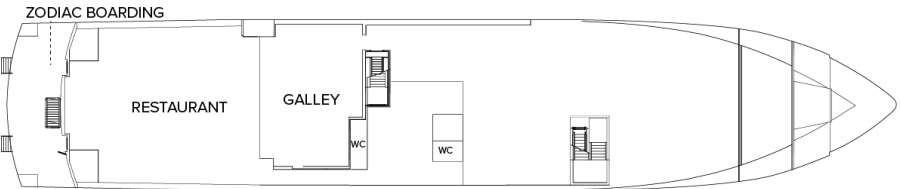


## Upper Deck

- Category 1
- Category 2
- Category 2 Solo



## Main Deck



# Ship Amenities

## Public Areas

Forward lounge and bar accommodating all guests for presentations and gatherings, restaurant, large library with Mac kiosks, open-air observation deck, underwater gear area and dual Zodiac boarding platform, and “open bridge,” where guests can meet the Captain and officers and learn about navigation.

## Meals

Meals are served in the dining room or sometimes outdoors, in a single, unassigned seating with a sociable, informal atmosphere with Ecuadorian flair.

## Cabins

52 outside cabins. All feature ocean views, private facilities, climate controls, and hair dryers, plus Ethernet, Wi-Fi connections and USB ports for mobile devices. Choose from suites on two decks, plus connecting cabins and triples are available for families and friends.

## Expedition Equipment

Zodiacs to get to shore quickly, glass-bottom boat, kayaks and paddleboards for personal explorations, snorkel gear and wetsuits for both adults and children, video microscope and underwater video camera.

## Special Features

A full-time doctor, undersea specialist, Lindblad-National Geographic certified photo instructor and video chronicler.

## Wellness

A fitness center, LEXspa treatment room, exercise room and wellness specialists.



## Self-Disinfecting Ships

Act Clean Coat™ is a light-activated, self-disinfecting cleaning process that continuously breaks down viruses, bacteria, mold, and airborne allergens across all ship surfaces. This non-toxic, chemical-free system also helps us save over one million gallons of water each year in our cleaning procedures.

## Special Offers

availability, and may not be combined with other offers. Call for details.

### 50% REDUCED DEPOSIT

Book between June 10 and August 18, 2026 and receive 50% off deposit at the time of booking on voyages departing October 1, 2026 through December 31, 2027 if booked outside of final payment. Remaining deposit balance is due at the time of final payment. Standard cancellation policy applies. Additional restrictions may apply. Offer valid for new bookings, subject to availability and offer may be withdrawn at any time without prior notice, not applicable on airfare or extensions, and may not be combined with other offers. Call for details.

---

### CELEBRATE LIFE'S MILESTONES

Celebrate a milestone with a group of eight or more and enjoy a special amenity package including: 5% savings on voyage fares, custom group photo, US\$150 shipboard credit for the group, and other special gifts. Milestone celebration to be communicated at time of booking.

---

### COMBINING OFFERS

Certain offers may be combinable, up to two savings opportunities, except where noted otherwise. For example, travel with a group of 8 or more on back-to-back expeditions, and take advantage of both savings.

---

### 10% OFF BACK-TO-BACK VOYAGES

Save 10% on consecutive departures, applicable on voyage fares only and not valid on extensions or airfare. Valid for new bookings only, subject to

## INCLUDED IN PRICE

All accommodations aboard ship or in hotels per itinerary; all meals as indicated in the itinerary, both aboard and onshore; beer, wine, cocktails, liquors and spirits aboard the ship (except certain premium brands which are available for purchase); hors d'oeuvres, 24-hour access to snacks, premium coffees and teas, non-alcoholic beverages, and filtered water; excursions; arrival/departure transfers are included for hotel arrangements made through National Geographic-Lindblad Expeditions; gratuities in Guayaquil, and Quito to local guides, drivers and tour escort; exploration tools curated to destination, such as Zodiacs, stand-up paddleboards, kayaks, snorkeling equipment (including wetsuits, masks, and fins); guidance and company of our leading expedition staff; assistance by the Lindblad Expeditions-National Geographic Certified Photo Instructor; presentations by expedition staff and expert guest speakers; Basic Wi-Fi aboard ship; complimentary reusable water bottle; onboard physician consultations; morning stretch classes and 24-hour access to exercise equipment; 24-hour access to lounge, observation decks, library, and other shared spaces; park and site entrance fees, special access permits, and port taxes. Unused services or items included in our programs are non-refundable.

## NOT INCLUDED IN PRICE

Airfare\* (except flights when indicated as included); pre and post-expedition extensions; additional hotel nights (except when indicated as included); crew gratuities; private transfers; laundry, spa treatments, scuba diving, and phone services; travel protection plans; and passport, visa, and immigration fees.

\*Recommended flight costs include flight(s) that take place during the date range of your trip to transport travelers from one itinerary destination to another. This cost also includes ground transportation, luggage transfer, and airport assistance. If you prefer to arrange your own flights privately, have alternate means of transport, or wish to modify at a later time, please contact an Expedition Specialist at 1.833.400.0831

Additional costs associated with medical services outside onboard physician consultation.

## TRAVEL PROTECTION PLAN

We strongly recommend our guests to take advantage of our Travel Protection Plan. This plan offers comprehensive coverage to protect you from cancellation fees, costs incurred due to trip delays/interruption, damage or loss of baggage, medical assistance, and evacuation during your travels. Our Travel Protection Plan is available for U.S. residents only, and may be purchased any time prior to final payment due date, Travel Protection premiums are non-refundable once plan is purchased. Learn more about our Travel Protection "Plus" Plan: <https://www.expeditions.com/terms-conditions/travel-protection-plan/>

## CANCELLATION POLICY

Review our cancellation policy: <https://www.expeditions.com/cancellation-policy/>