









Galápagos & South America
 0° 0' N 0° 0' E

Epic Galápagos Escape

Experience the Galápagos on an in-depth voyage to 10 iconic islands, with more opportunities to witness the wildlife and landscapes that inspired Darwin’s theory of evolution. Snorkel rich waters teeming with sea lions and sea turtles, hike black-sand beaches and lush highlands and gain insight into this extraordinary ecosystem from expert local naturalists. Drawing on more than 55 years of expedition heritage, this immersive journey delivers an epic Galápagos experience, with multiple adventures each day both on land and at sea.

From
£9,989 / per person
 Does not include flights

 DATES Year round	 DURATION 13 Days
 SHIPS <i>National Geographic Gemini</i> <i>National Geographic Islander II</i>	
 STARTS AT Quito, Ecuador	  ENDS AT Quito, Ecuador

Highlights

- ★ Experience the archipelago’s full diversity by visiting twice as many islands as a typical voyage—from the volcanic shores of the west to dramatic eastern cliffs
- ★ Sail aboard the intimate *National Geographic Islander II* or *National Geographic Gemini*—each with just 48 guests and a 1:1 crew ratio—offering the personalized feel of a private yacht
- ★ Walk among fearless wildlife across diverse island habitats: Observe nesting seabirds, photograph sea lions on golden beaches and encounter marine iguanas and giant tortoises
- ★ Snorkel in the protected waters of the Galápagos Marine Reserve, swimming among playful sea lions, sea turtles, penguins and schools of vibrant fish





Day by day

■ DAY 1

Quito, Ecuador

Arrive in Quito, Ecuador’s historic Andean capital, where you’ll be met and transferred to your hotel for an overnight stay. Set at 9,350 feet and surrounded by dramatic volcanic peaks, Quito offers a striking introduction to your journey. You may choose to arrive early to explore more of the city.

Arrival Time: Anytime.
Arrival City: Quito, Ecuador
 Meals included: dinner

◇ DAY 2

Quito / Galápagos Islands / Embark Ship

In the morning, guests taking the recommended flight to the Galápagos will receive airport transfers and luggage assistance. Upon arrival in Baltra, you will be met and escorted to the ship for embarkation.

Meals included: breakfast, lunch, dinner

◇ DAYS 3-11

Galápagos Islands

This extended exploration offers the rare opportunity to visit all of the remarkable islands listed below. All ship itineraries are subject to Galápagos National Park regulations.

Please note that Day 7 will mark a transition, as some guests conclude their voyage while others embark to begin their adventure. Some staff may also rotate, bringing fresh energy and expertise for the journey ahead. During this turnaround, you’ll explore a new site on shore with a naturalist.

North Seymour: Stroll along a scenic coastal trail in search of nesting frigatebirds and blue-footed boobies, as well as land and marine iguanas and other wildlife.

Rabida: Step ashore on striking red-sand beaches and snorkel in the shallows alongside Galápagos sea lions and vibrant tropical fish. Later, enjoy a nature or photo walk to spot hawks, other terrestrial birds, and—at times—flamingos in a small saltwater lagoon.

Santa Cruz: Visit Puerto Ayora, the archipelago’s largest town and the headquarters of both the Galápagos National Park and the Charles Darwin Research Station. See the monument to Lonesome George and tour the giant tortoise breeding corrals. Venture into the lush highlands to encounter giant tortoises roaming in the wild and learn about the lives of the island’s early settlers. Explore the island’s north coast, where forests of towering prickly pear cacti shelter large land iguanas, and enjoy a Zodiac cruise through mangrove ecosystems in search of turtles, rays and sharks.

Isabela: Raise a toast as you cross the Equator at Volcán Ecuador, the northernmost of Isabela’s six great shield volcanoes. Watch for whales, dolphins, sea turtles and the elusive ocean sunfish along the way. Over two days, explore these dramatically eroded volcanic shores in the footsteps of Darwin and Melville, encountering abundant wildlife and remarkable geology. Zodiac cruise along the coast in search of Galápagos penguins and fur seals, and snorkel among green sea turtles and shimmering schools of endemic fish.

Fernandina: One of the most active oceanic volcanoes in the world, Fernandina is the youngest

and most untamed island in Galápagos—and home to the strange flightless cormorant, Galápagos penguins and the largest marine iguana colonies in the archipelago. Hike across recent black lava flows alongside scampering Sally Lightfoot crabs and sea lions playing in tidepools.

San Cristóbal: Hike to the plateau of Punta Pitt for spectacular views and fascinating geology. This is the only site in the Galápagos where all three booby species nest together. Later, swim off the beach alongside playful young sea lions.

Kayak past the striking tuff-stone cliffs of Cerro Brujo or stroll its white-sand beach in search of red-footed boobies, endemic mockingbirds, and lava lizards. Cap the day with a sunset cruise around the dramatic spires of iconic Kicker Rock.

Española: Located in the far southeastern reaches of the archipelago, Española is home to an extraordinary array of wildlife, including red and black marine iguanas, swallow-tailed gulls, Nazca boobies and endemic mockingbirds and lava lizards. Seasonally, Punta Suárez also hosts the world's only breeding population of waved albatrosses. Snorkel and kayak alongside playful sea lions and colorful fish at Gardner Bay, then set out on an afternoon walk at Punta Suárez to encounter more of the island's remarkable species.

Floreana: Follow a trail past a pink-tinted lagoon frequented by flamingos. Snorkel among sea lions and abundant fish or cruise along Champion Islet by Zodiac. Visit the famous wooden barrel at Post Office Bay and learn about its unusual postal system.

Santiago: Begin the day with a nature or photo walk along a black volcanic beach, or head out early by kayak. Later, explore spectacular Buccaneer Cove by Zodiac and paddle its dramatic coastline. Snorkel among dense schools of reef

fish sheltering in the rugged shoreline. In the afternoon, hike at Puerto Egas through a striking landscape of ash and lava flows, tidal pools, and sea caves—home to sea lions and fur seals, land and marine iguanas, shore birds, and vibrant Sally Lightfoot crabs.

Bartolomé: Hike to the summit of a 300-foot volcanic cone for sweeping panoramic views. Later, snorkel or join a glass-bottom boat excursion around the base of iconic Pinnacle Rock, where you may spot sea lions, small reef sharks, and even Galápagos penguins.

Meals included: breakfast, lunch, dinner

◇ DAY 12

Galápagos Islands / Disembark Ship / Quito

Disembark this morning and join the recommended flight to Quito; transfers to the airport and luggage assistance will be provided. In Quito, choose from several hotel options, including a convenient airport hotel. The afternoon and evening are at your leisure. You may be able to take advantage of overnight flights home. Ask your expedition specialist about post-voyage extensions and additional options in Quito and beyond.

Meals included: breakfast, lunch, dinner

■ DAY 13

Quito

After breakfast, transfer to the airport for flights home, unless you've arranged additional hotel nights or a post-voyage extension.

Departure Time: Anytime on day 13, or after 7:00 p.m. local time on day 12.

Departure City: Quito, Ecuador

Expedition

Quito, Ecuador → Quito, Ecuador

09 Jan	23 Jan			
06 Feb	20 Feb			
06 Mar	20 Mar			

2026 DEPARTURE DATES

Aboard *National Geographic Islander II*

11 Jul				
08 Aug	22 Aug			
05 Sep	19 Sep			
03 Oct	31 Oct			
14 Nov	28 Nov			
26 Dec				

2028 DEPARTURE DATES

Aboard *National Geographic Gemini*

08 Jan	22 Jan			
05 Feb	19 Feb			
04 Mar	18 Mar			

2027 DEPARTURE DATES

Aboard *National Geographic Gemini*

03 Apr	17 Apr			
01 May	15 May	29 May		
12 Jun	26 Jun			
10 Jul	24 Jul			
07 Aug	21 Aug			
04 Sep	18 Sep			
02 Oct				
27 Nov				
11 Dec	25 Dec			

Aboard *National Geographic Islander II*



National Geographic Gemini

GUESTS

48

CABINS

27

A fully equipped Galápagos expedition ship for 48 guests

The newly christened *National Geographic Gemini* joins the Lindblad Expeditions-National Geographic Galápagos fleet with a history and heritage of small-ship expedition cruising. Launched in 2001 from the same shipyard as *National Geographic Orion*, *National Geographic Gemini* is a highly maneuverable, shallow-draft expedition ship purpose built to explore remote areas with ease.

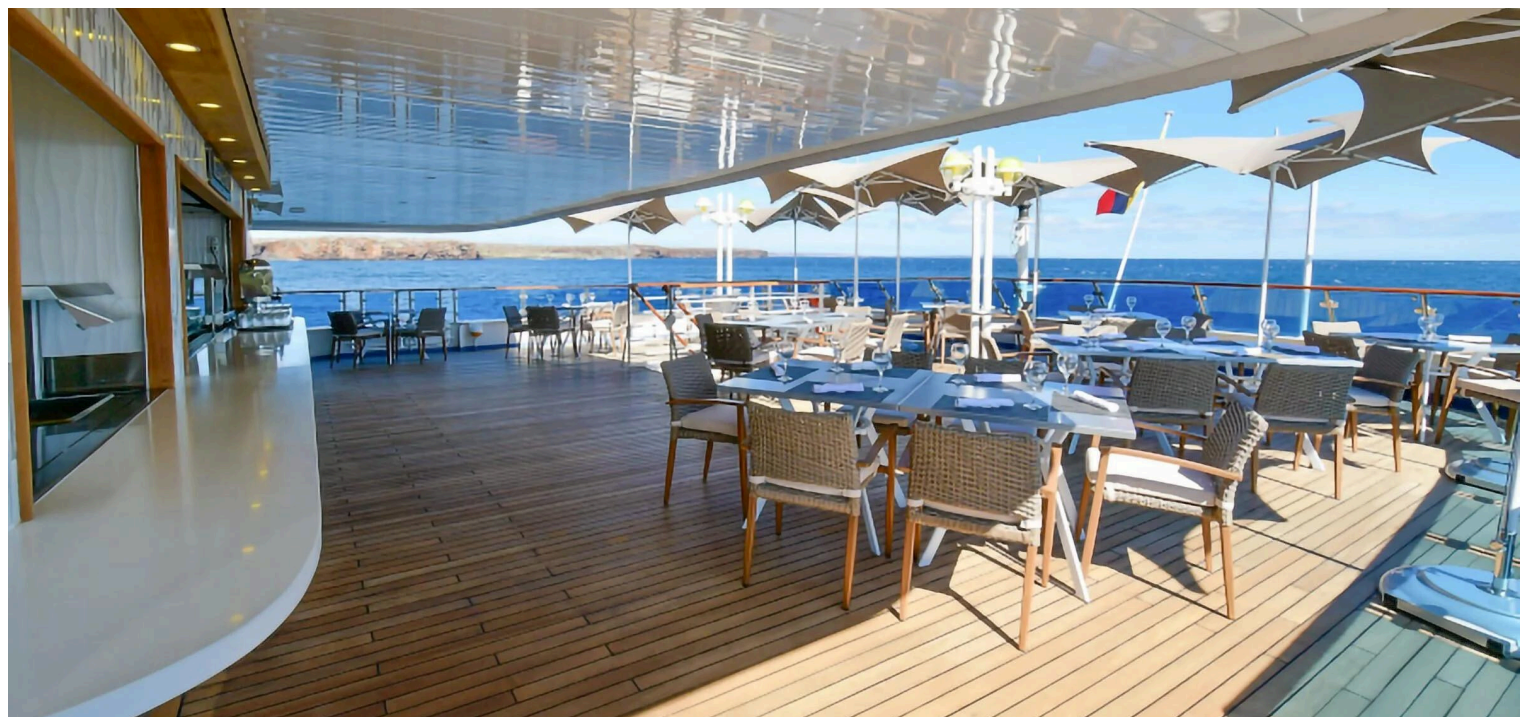
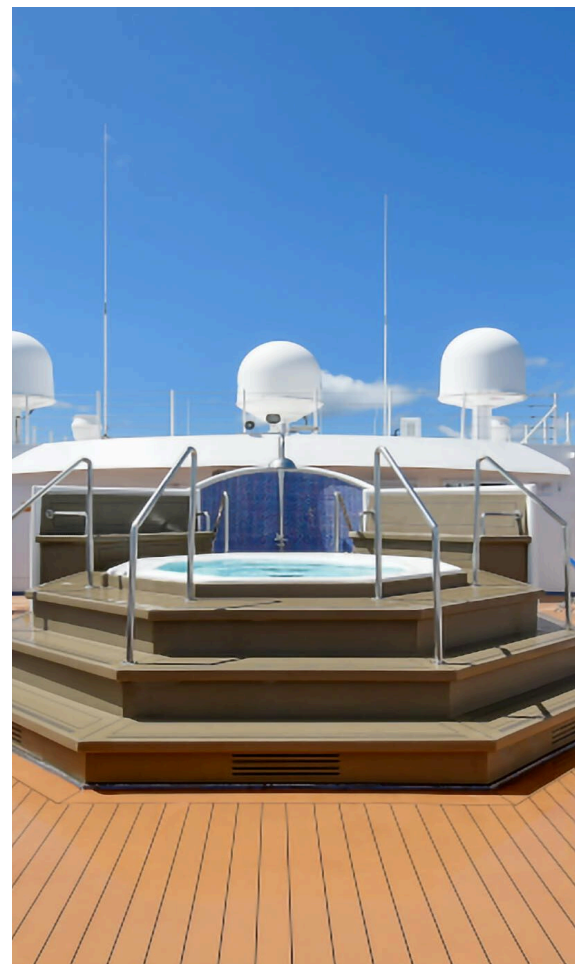
Sailing year round with a maximum of 48 guests on weeklong voyages departing Fridays, *National Geographic Gemini* offers guests the choice of larger suites, cabins with balconies, and a mix of doubles, solos and triples.

All cabins are ocean facing and with ample storage, beds that can be configured as a queen or two twins, a sofa, desk, television and a well-stocked mini fridge. Bathrooms are large and feature glass showers. Suite 601 on the Upper Deck (Category 7) is the largest in the Lindblad Expeditions-National Geographic Galápagos fleet with a separate living room, forward-facing balcony and floor-to-ceiling windows. Cabins on the Bridge Deck (Category 4 & 5S) all have private balconies with seating.

Enjoy the outdoors on the Upper Deck and Bridge Deck, which features a whirlpool hot tub, and windowed fitness center and spa. An outdoor café on the Lounge Deck accommodates all guests in a single open seating, as does the restaurant on the Marina Deck. The open, windowed lounge for presentations and informal gatherings has a large bar and well-stocked library and adjacent reception area.

Carrying a fleet of quick-to-deploy Mark VI Zodiacs, kayaks and stand-up paddleboards, the ship is well-equipped for exploring the islands and marine reserve. It is also stocked with snorkeling gear for all guests, including shortie wetsuits.

National Geographic Gemini provides an authentic sense of place informed by our decades-long relationships with local communities and conservation groups. Contributing to the fully immersive Ecuadorian experience on board is the passionate and knowledgeable Ecuadorian crew. Meals are designed to support the community—comprising locally sourced farm-to-table and ocean-to-table ingredients.

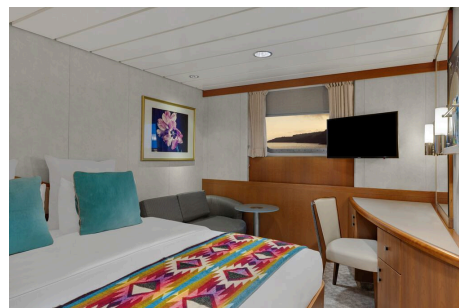


Cabin Categories

Category 1

LOUNGE DECK #411, 414, 415, 416

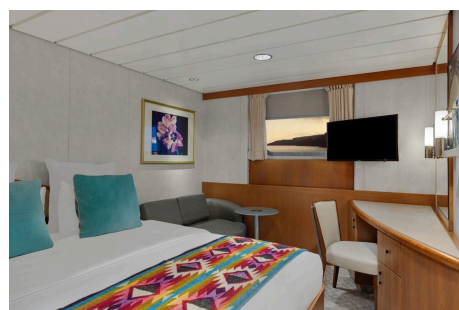
Forward cabins, outside facing with a large window, queen or two twin beds, ample storage, sitting area, desk, mini fridge and television. Bathrooms with a glass shower and amenities. 160 square feet.



Category 2 Solo

LOUNGE DECK #401 and 402

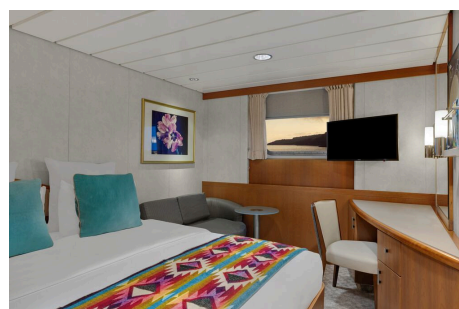
Outside facing with a large window, choice of either a queen or two twin beds, ample storage, sitting area, desk, mini fridge and television. Bathrooms with a glass shower and amenities. Equal in size and amenities to other Category 2 cabins. 160 square feet.



Category 2

LOUNGE DECK #403-408, 410, 412

Outside facing with a large window, queen or two twin beds, ample storage, sitting area, desk, mini fridge and television. Bathrooms with a glass shower and amenities. 160 square feet.



Category 4

BRIDGE DECK #500-508

Outside facing with floor-to-ceiling glass doors, 50-square-foot balcony with seating, queen or two twin beds, ample storage, sitting area, desk, mini fridge and television. Bathrooms with a glass shower and amenities. 205 square feet. 503/505 and 504/506 connect. 500/503 with convertible sofa bed for triple occupancy.



Cabin Categories

Category 5 Solo

BRIDGE DECK #509

Outside facing with floor-to-ceiling glass doors, 50-square-foot balcony with seating, one queen bed, ample storage, sitting area, desk, mini fridge, and television. Bathrooms with a glass shower and amenities. 175 square feet.



Category 5

UPPER DECK #602

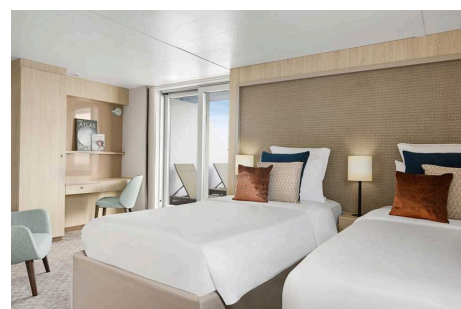
Outside facing with floor-to-ceiling glass doors, 50-square-foot balcony with seating, queen or two twin beds, ample storage, sitting area, desk, mini fridge and television. Bathrooms with a glass shower and amenities. 205 square feet. Connects to 604 as family suite.



Category 6

UPPER DECK #604

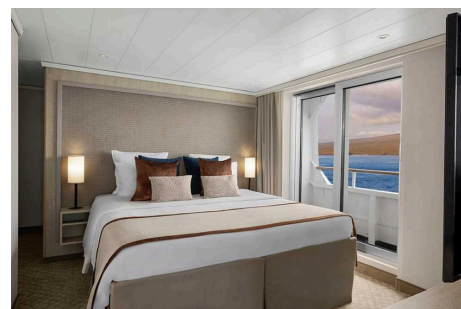
Forward facing with floor-to-ceiling glass doors, 195-square-foot forward-facing balcony with seating, queen or two twin beds, ample storage, sitting area, desk, mini fridge, and television. Bathrooms with a glass shower and amenities. 250 square feet. Connects to 602 as family suite.



Category 7

UPPER DECK #601

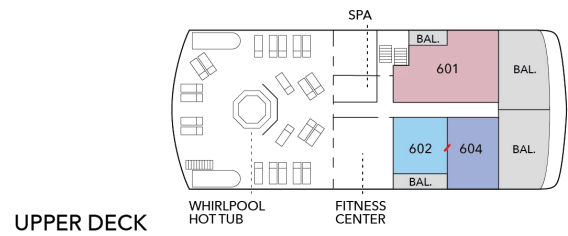
Forward facing with floor-to-ceiling glass doors, separate living room with sofa bed for triple occupancy, and 195-square-foot forward-facing balcony with seating. Bedroom with queen or two twin beds, 50-square-foot side balcony, ample storage, mini fridge, and television. Large bathroom with rain shower. 460 square feet.



Deck Plans

Upper Deck

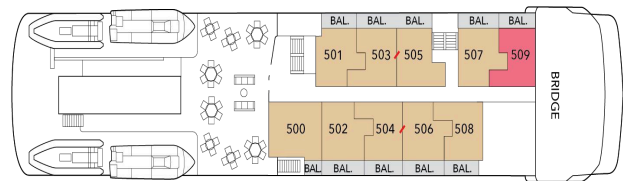
- Category 5
- Category 6
- Category 7



UPPER DECK

Bridge Deck

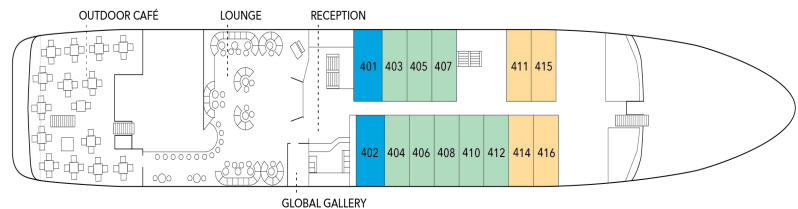
- Category 4
- Category 5 Solo



BRIDGE DECK

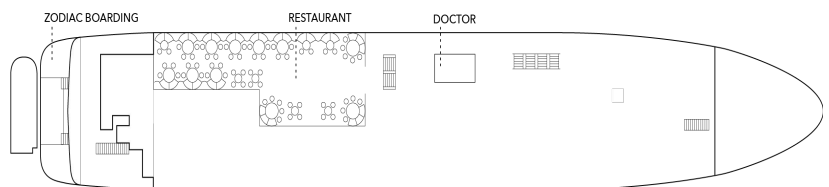
Lounge Deck

- Category 1
- Category 2 Solo
- Category 2



LOUNGE DECK

Marina Deck



MARINA DECK

Ship Amenities

Accommodations with Balconies

National Geographic Gemini offers an array of accommodation types, including 13 cabins with private balconies. Cabins on the Bridge Deck (Category 4 & 5S) have private balconies with seating. Suite 601 on the Upper Deck (Category 7) is the largest in the Lindblad Expeditions-National Geographic Galápagos fleet with a separate living room, forward-facing balcony, side balcony, and floor-to-ceiling windows. Cabin 604, which connects with Cabin 602 for the ultimate family suite, is forward facing with a large balcony.

Open-Air Decks

The Upper Deck features an outdoor shower, whirlpool hot tub with adjacent shaded seating area and a windowed fitness center and spa perfect for relaxing. The outdoor café on the Lounge Deck can accommodate all guests in a single seating.

In Good Company

Explore Galápagos in the company of veteran Lindblad Expeditions-National Geographic expedition staff, a veteran Expedition Leader, Undersea Specialist, Certified Photo Instructor, and licensed naturalists. Staff are certified as Field Educators to offer the National Geographic Explorers-in-Training program for kids and teens.

**Note:**

All images are for reference only. The final ship design will evolve following a multi-million-dollar renovation.



National Geographic Islander II

GUESTS

48

CABINS

26

A New Ship with Just 26 Spacious Staterooms and Suites Sailing the Galápagos Islands

Sleek and elegant, *National Geographic Islander II* sails year-round in the Galápagos Islands and elevates the guest experience to an entirely new level.

National Geographic Islander II is a gracious expedition vessel that feels like a private yacht. With only 26 staterooms and suites, and accommodating just 48 guests, she sails with a 1:1 guest-to-crew ratio.

Special features include teak decks, indoor-outdoor dining options, an impressive observation deck, and new amenities like a climate-controlled Marina and a dedicated Science Hub.

National Geographic Islander II provides an authentic sense of place, drawing on our decades of partnering with local communities and conservation groups. Contributing to the fully immersive Ecuadorian experience on board are Ecuadorian staff and locally sourced and sustainable farm-to-table and ocean-to-table culinary ingredients, as well as artisan spa elements and handcrafted textiles, art, and décor all regionally created.

The *National Geographic Islander II* celebrates Lindblad's deep connection to the islands, Ecuador, and its people with a deeply immersive and truly unique Ecuadorian cultural experience. The carefully considered food and beverage program highlights the four regions of Ecuador with locally sourced farm-to-table ingredients. Regional ingredients can even be found in spa products. From Ecuadorian shipboard staff to artwork, textiles, and décor created by local artists and artisans and Ecuadorean music heard throughout the ship, guests will experience the beauty and wonder of Ecuador both on and off the ship.



Cabin Categories

Bridge Deck

Category SU

GUEST SUITE #301, 302, 306, 308, 310, 311, 312, 316

280 sq. ft. with two panoramic windows, twin/king convertible beds, seating area with sofa, lounge chair, and marble double-sink bathrooms with rain shower. #301, 302, 306, 308, 310-312, 316. #312 & #316 are triple occupancy with sofa made up as third bed. Third person rates are one-half the double occupancy rate. Connecting Suites: #301/303, 302/306



Category SO

SOLO SUITE #315, 318

280 sq. ft. with two panoramic windows, twin/king convertible beds, seating area with sofa, lounge chair, and marble double-sink bathrooms with rain shower; dedicated solo but otherwise identical to SU category.



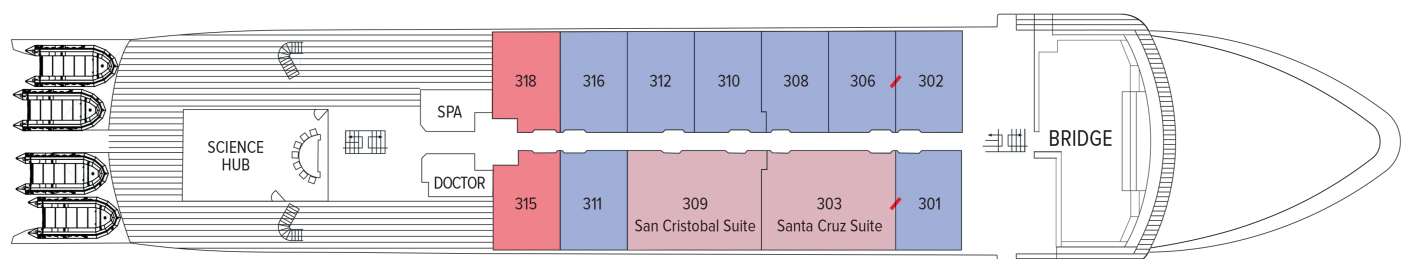
Category IS

ISLANDER SUITE #303, 309

515 sq. ft. with two panoramic windows, twin/king convertible beds, separate living areas with sofa, table and chairs, two lounge chairs, larger bathroom with both rain shower and tub. Triple occupancy with sofa made up as third bed. Third person rates are one-half the double occupancy rate. Connecting Suites: #301/303, 302/306



Bridge Deck



Cabin Categories

Main Deck

Category IS

ISLANDER SUITE #209, 218

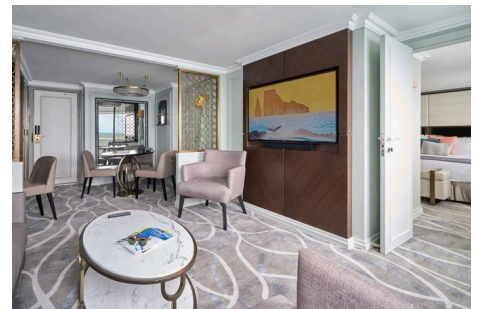
515 sq. ft. with two panoramic windows, twin/king convertible beds, separate living areas with sofa, table and chairs, two lounge chairs, larger bathroom with both rain shower and tub. Triple occupancy with sofa made up as third bed. Third person rates are one-half the double occupancy rate.



Category SU

GUEST SUITE #203, 205-208, 210-212, 215, 220

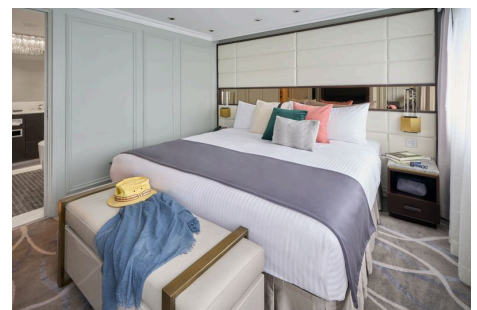
280 sq. ft. with two panoramic windows, twin/king convertible beds, seating area with sofa, lounge chair, and marble double-sink bathrooms with rain shower. Connecting Suites: #205/207.



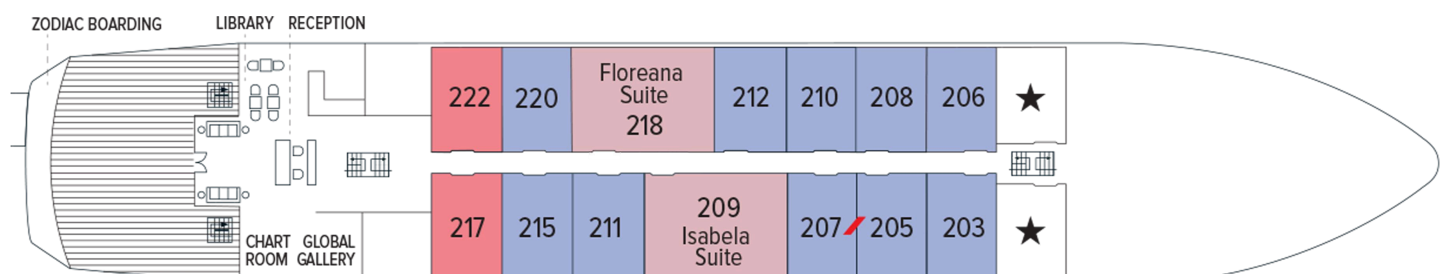
Category SO

SOLO SUITE #217, 222

280 sq. ft. with two panoramic windows, twin/king convertible beds, seating area with sofa, lounge chair, and marble double-sink bathrooms with rain shower; dedicated solo but otherwise identical to SU category.

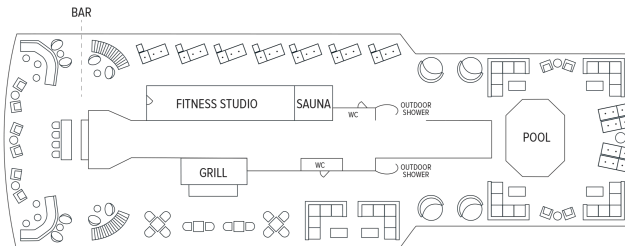


Main Deck

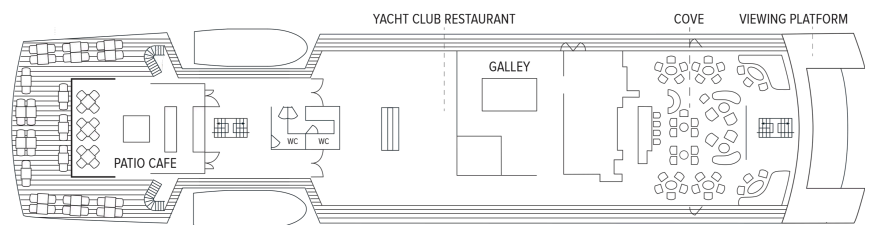


Deck Plans

Observation Deck

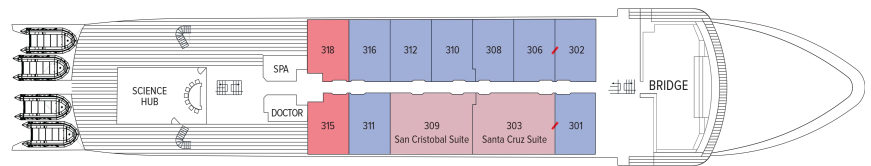


Promenade Deck



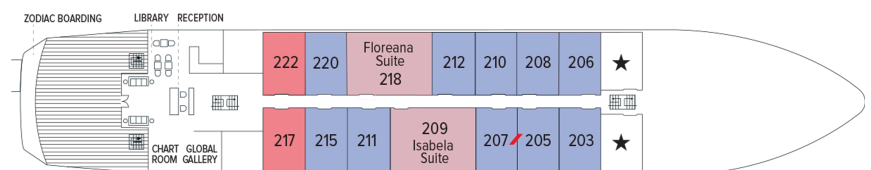
Bridge Deck

- Category SU
- Category SO
- Category IS

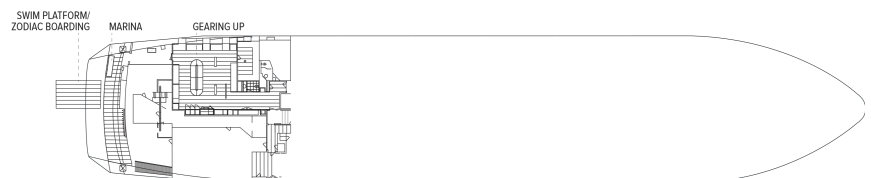


Main Deck

- Category IS
- Category SU
- Category SO



Marina Deck



Ship Amenities

Indoor-Outdoor Dining

Enjoy meals in the expanded al fresco Patio Café, sophisticated Yacht Club Restaurant on the Promenade Deck or Grill on the Observation Deck, where there's also a bar and ample seating to host events. Here, guests gather for wine tastings, chocolate tastings and Bubble-Qs—BBQs made extra celebratory with Champagne. The convenient 24-hour beverage and snack stations in the Bar and Library are other welcome amenities.



Science Hub

Outfitted with scientific equipment, the exciting new Science Hub continues the Lindblad Expeditions-National Geographic legacy of supporting conservation and research. Equipped for underway oceanography, interactive video presentations and an enhanced photo experience, the Science Hub is also a place for young guests in the National Geographic Explorers-in-Training program to experience hands-on learning.

Public Spaces

The ship's public spaces enhance the connection to the islands. Guests will find an open Bridge, surrounding teak decks, and a forward-viewing area. Two dining areas accommodate all guests in a single seating. The Cove, which has a bar, is the setting for daily Recaps. Other ship features include a Reception area with glass doors that lead to an open teak Viewing Deck, a Plunge Pool, a Chart Room, the Global Gallery, Library, Marina, Swim Platform and Zodiac boarding area.



Expedition Tools

National Geographic Islander II carries a fleet of kayaks and stand-up paddleboards, a glass-bottom boat, an expanded flotilla of versatile Zodiacs, complete snorkel gear for adults and children, video microscope, and Science Hub.

The newly refitted teak-appointed marina is spacious and climate-controlled, designed for guests to comfortably get in and out of expedition gear.

Expanded Expedition Staff

The Expedition Team, led by a veteran Expedition Leader, includes a five Naturalists, Undersea Specialist, Certified Photo Instructor and Certified Field Educators who run our exclusive National Geographic Explorers-in-Training for kids and teens.

Special Offers

10% OFF BACK-TO-BACK VOYAGES

Save 10% on consecutive departures, applicable on voyage fares only and not valid on extensions or airfare. Valid for new bookings only, subject to availability, and may not be combined with other offers. Call for details.

COMBINING OFFERS

Certain offers may be combinable, up to two savings opportunities, except where noted otherwise.

For example, travel with a group of 8 or more on back-to-back expeditions, and take advantage of both savings.

CELEBRATE LIFE'S MILESTONES

Celebrate a milestone with a group of eight or more and enjoy a special amenity package including: 5% savings on voyage fares, custom group photo, US\$150 shipboard credit for the group, and other special gifts. Milestone celebration to be communicated at time of booking.

INCLUDED IN PRICE

All accommodations aboard ship or in hotels per itinerary; all meals as indicated in the itinerary, both aboard and onshore; beer, wine, cocktails, liquors and spirits aboard the ship (except certain premium brands which are available for purchase); hors d'oeuvres, 24-hour access to snacks, premium coffees and teas, non-alcoholic beverages, and filtered water; excursions; arrival/departure transfers are included for hotel arrangements made through National Geographic-Lindblad Expeditions; gratuities in Guayaquil, and Quito to local guides, drivers and tour escort; exploration tools curated to destination, such as Zodiacs, stand-up paddleboards, kayaks, snorkeling equipment (including wetsuits, masks, and fins); guidance and company of our leading expedition staff; assistance by the Lindblad Expeditions-National Geographic Certified Photo Instructor; presentations by expedition staff and expert guest speakers; Basic Wi-Fi aboard ship; complimentary reusable water bottle; onboard physician consultations; morning stretch classes and 24-hour access to exercise equipment; 24-hour access to lounge, observation decks, library, and other shared spaces; park and site entrance fees, special access permits, and port taxes. Unused services or items included in our programs are non-refundable.

NOT INCLUDED IN PRICE

Airfare* (except flights when indicated as included); pre and post-expedition extensions; additional hotel nights (except when indicated as included); crew gratuities; private transfers; laundry, spa treatments, scuba diving, and phone services; travel protection plans; and passport, visa, and immigration fees.

*Recommended flight costs include flight(s) that take place during the date range of your trip to transport travelers from one itinerary destination to another. This cost also includes ground transportation, luggage transfer, and airport assistance. If you prefer to arrange your own flights privately, have alternate means of transport, or wish to modify at a later time, please contact an Expedition Specialist.

TRAVEL PROTECTION PLAN

We strongly recommend our guests to take advantage of our Travel Protection Plan. This plan offers comprehensive coverage to protect you from cancellation fees, costs incurred due to trip delays/interruption, damage or loss of baggage, medical assistance, and evacuation during your travels. Our Travel Protection Plan is available for U.S. residents only, and may be purchased any time prior to final payment due date, Travel Protection premiums are non-refundable once plan is purchased. Learn more about our Travel Protection "Plus" Plan: <https://www.expeditions.com/terms-conditions/travel-protection-plan/>

CANCELLATION POLICY

Review our cancellation policy: <https://www.expeditions.com/cancellation-policy/>