








Galápagos, Peru & South America
 13° 9' S 72° 32' W

Peru and Galápagos Escape

Discover two iconic world wonders in action-filled days. Starting in Lima, fly to Cusco and journey to the Sacred Valley and fabled Machu Picchu. Then venture to Darwin’s Galápagos Islands to encounter unique wildlife and landscapes on shore and under the sea. Sail aboard the sleek and elegant *National Geographic Islander II* through 2026, and new in 2027, sail aboard the new *National Geographic Gemini*. With just 26 staterooms and suites, this vessel feels like a private yacht.

From
£7,651 / per person
 Does not include flights

 DATES Year round	 DURATION 12 Days
 SHIPS <i>National Geographic Gemini</i> <i>National Geographic Islander II</i>	
 STARTS AT Lima, Peru	→  ENDS AT Quito or Guayaquil, Ecuador

Note: Passport information to secure Machu Picchu tickets is needed at time of booking due to an increase in demand. Bookings within 120 days are subject to confirmation of availability.

Highlights

- ★ Soak in the scenery and culture of the Sacred Valley of the Inca
- ★ Journey between Ollantaytambo and Machu Picchu by Inca Rail
- ★ Remain into the late afternoon at fabled Machu Picchu, introduced to the world by Hiram Bingham in the April 1913 issue of *National Geographic* magazine
- ★ Maximize your time in Galápagos with options to hike, Zodiac cruise, and snorkel every day





Day by day

■ DAY 1

Lima, Peru

Arrive in Lima, Peru’s thriving capital, and transfer to the convenient Wyndham Grand Costa del Sol Lima Airport hotel, located at the airport. Most international flights arrive in the late evening. Opt to arrive early for a [Lima pre-voyage extension](#) staying at the iconic Country Club Lima Hotel. The extension adds just a day to the expedition and gives you a chance to rest, relax and see this UNESCO World Heritage designated city.

Arrival Time: Anytime after 12:00 p.m.

Arrival City: Lima, Peru

◇ DAY 2

Lima / Cusco / Sacred Valley

Fly to Cusco this morning and transfer down into the Sacred Valley to Pisac, known for its market and the archaeological site that rises above the town. After lunch, continue through the Sacred Valley and check-in at Tambo del Inka, your hotel for the next two nights.

Meals included: breakfast, lunch, dinner

◇ DAY 3

Machu Picchu

Drive to Ollantaytambo and admire the archaeological site, then board the scenic train traveling along the Urubamba River to Machu Picchu. Perched at nearly 8,000 feet in the “eyebrow of the jungle,” the sanctuary is surrounded by tropical mountain forest with diverse birds and orchids. Enjoy an afternoon tour of the ruins and return to Machu Picchu Pueblo for the train ride back to the Sacred Valley and Tambo del Inka. Dinner is served aboard the first-class

train.

Meals included: breakfast, lunch, dinner

◇ DAY 4

Sacred Valley / Cusco

Departing the hotel, drive through the Sacred Valley to Moray—a visually stunning Inca site with dramatic agricultural terraces in the heart of the fabled and fertile Urubamba Valley. Later, visit Chinchero, a typical Andean village, where National Geographic Grantee Nilda Callañaupa gives us a demonstration of Inca weaving traditions with the women in her cooperative. Here, you’ll enjoy a family-style lunch. Continue to Cusco and Sacsayhuamán, the emblematic monolithic stone site standing over the city from the northern outskirts. Like Machu Picchu, the ceremonial center was built during the reign of Inka Pacachuti. Opt to return to Cusco downhill on foot, walking through the eclectic San Blas neighborhood. In Cusco, check into the JW Marriott El Convento Hotel (a former 16th-century Augustine convent), located in the historic center, for two nights. Dinner tonight will be at this truly unique hotel.

Meals included: breakfast, lunch, dinner

◇ DAY 5

Cusco

This morning, explore Cusco, the center of the Inca universe and UNESCO-designated World Heritage site. Tour the ornate 17th-century cathedral and Plaza de Armas, as well as the sacred Inca Temple of the Sun. Visit nearby Sacsayhuamán, the emblematic monolithic stone site standing over the city from the northern outskirts. Like Machu Picchu, the ceremonial center was built during the reign of Inka Pacachuti. Opt to return to Cusco

downhill on foot, walking through the eclectic San Blas neighborhood.

After lunch, the afternoon and evening are yours to enjoy at your own pace: relax, shop, wander or visit one of Cusco's many churches and museums. Dinner is on your own to delve into the culinary scene in this Andean cultural center.

Meals included: breakfast, lunch

◇ DAY 6

Cusco / Lima / Guayaquil, Ecuador

Bid farewell to Peru and continue to Ecuador for the second part of your expedition with flights from Cusco via Lima to Guayaquil, Ecuador's largest city. Overnight at Hotel del Parque.

Meals included: breakfast, dinner

◇ DAYS 7-10

Guayaquil / Baltra / Embark Ship

Fly on Day 7 to Galápagos. Each day here, you'll hike, swim, snorkel or explore by kayak or Zodiac—all the while witnessing incredible interactions between animals in their natural habitat. Start exploring on Isla Santa Cruz with a trip over the highlands of Santa Cruz upon arrival. Over these few days, walk in a cactus forest with endemic land iguanas on Santa Fé. Wander among sea lions and admire soaring sea birds on Plaza Sur. Search for penguins on stark black lava at Sullivan Bay on Santiago. Snorkel in crystal-clear water at Sombrero Chino. And sail across the Equator and into the flooded caldera at Genovesa, a seabird paradise where you'll bid farewell to Darwin's Islands.

Meals included: breakfast, lunch, dinner

◇ DAY 11

Baltra / Disembark Ship / Guayaquil or Quito

Disembark this morning for a return flight to the mainland, where you'll transfer to Hotel del Parque in Guayaquil. In Quito there are several hotel options. The afternoon and evening are at your leisure. You may be able to take advantage of overnight flights home. Ask your expedition specialist about joining a culturally rich post-voyage extension to Quito and Otavalo, a celebrated market town.

Meals included: breakfast

■ DAY 12

Guayaquil or Quito

After breakfast, transfer to the airport and board flights home, unless you have arranged for additional nights or an extension.

Departure Time: Anytime on day 12, or after 7:00 p.m. local time on day 11.

Departure City: Guayaquil or Quito, Ecuador

Meals included: breakfast

Expedition

Lima, Peru → Quito or Guayaquil, Ecuador

2026 DEPARTURE DATES

Aboard *National Geographic Islander II*

18 Jun				
02 Jul	16 Jul	30 Jul		
13 Aug	27 Aug			
10 Sep	24 Sep			
08 Oct	22 Oct			
05 Nov	19 Nov			
03 Dec	17 Dec	31 Dec		

2027 DEPARTURE DATES

Aboard *National Geographic Gemini*

08 Apr	22 Apr			
06 May	20 May			
03 Jun	17 Jun			
01 Jul	15 Jul	29 Jul		
12 Aug	26 Aug			
09 Sep	23 Sep			
07 Oct	21 Oct			
18 Nov				
02 Dec	16 Dec	30 Dec		

Aboard *National Geographic Islander II*

14 Jan	28 Jan			
11 Feb	25 Feb			
11 Mar				

2028 DEPARTURE DATES

Aboard *National Geographic Gemini*

13 Jan	27 Jan			
10 Feb	24 Feb			
09 Mar				



National Geographic Gemini

GUESTS

48

CABINS

27

A fully equipped Galápagos expedition ship for 48 guests

The newly christened *National Geographic Gemini* joins the Lindblad Expeditions-National Geographic Galápagos fleet with a history and heritage of small-ship expedition cruising. Launched in 2001 from the same shipyard as *National Geographic Orion*, *National Geographic Gemini* is a highly maneuverable, shallow-draft expedition ship purpose built to explore remote areas with ease.

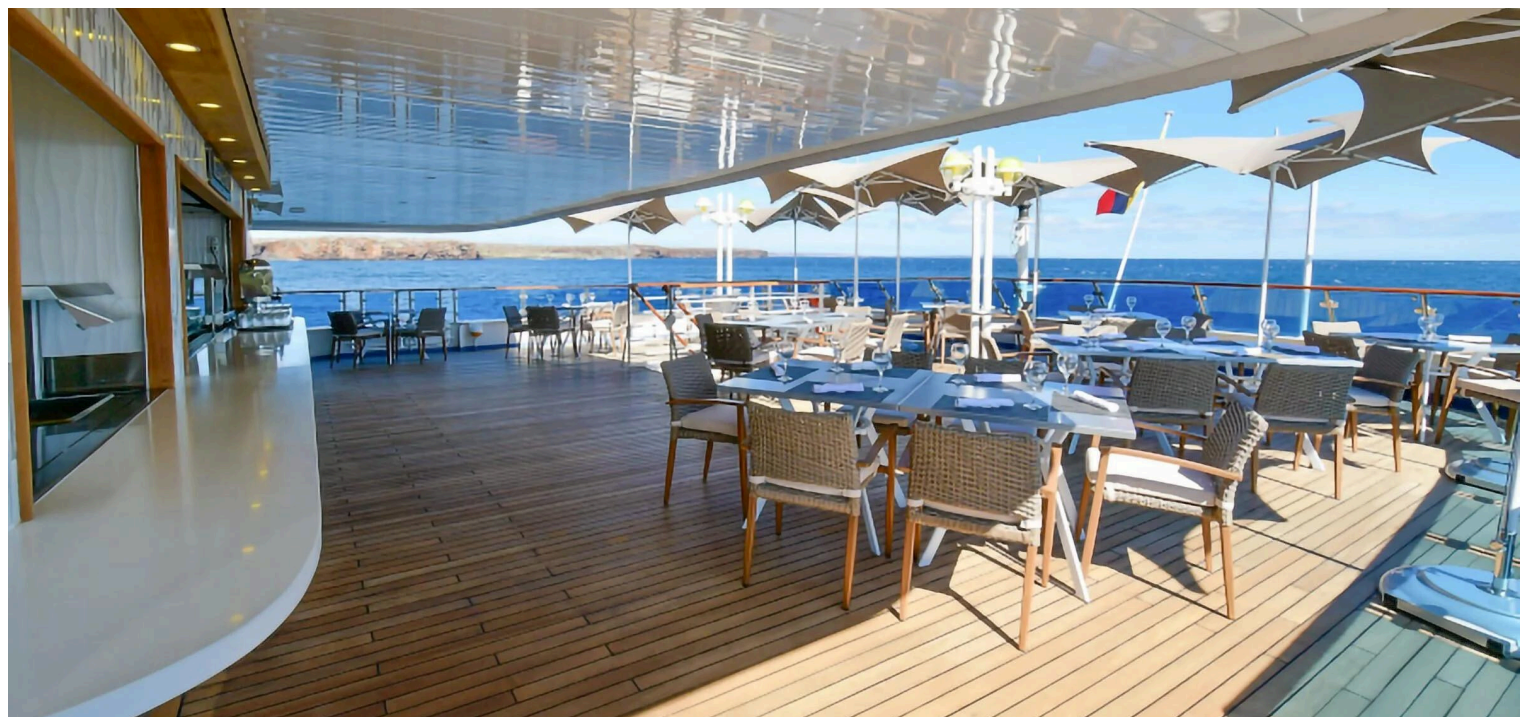
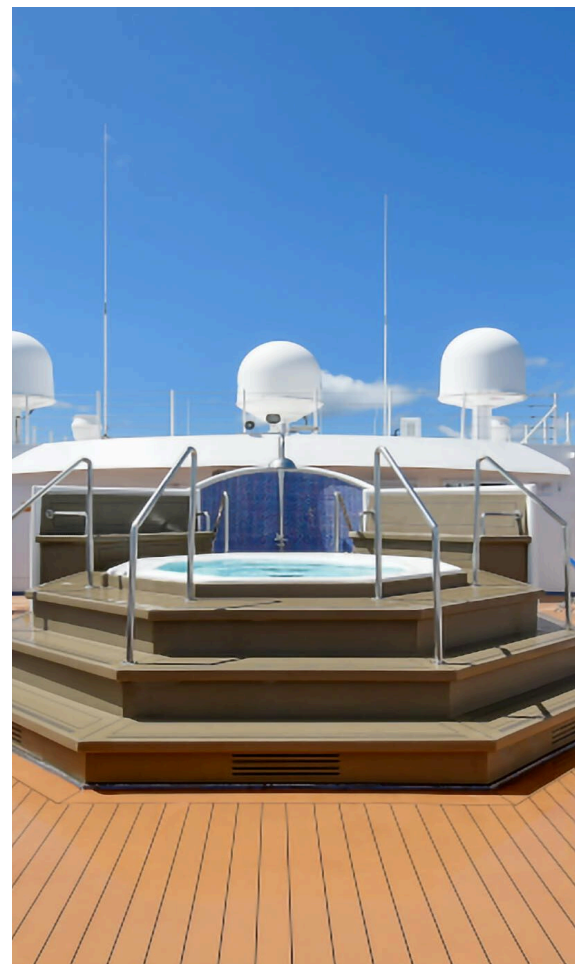
Sailing year round with a maximum of 48 guests on weeklong voyages departing Fridays, *National Geographic Gemini* offers guests the choice of larger suites, cabins with balconies, and a mix of doubles, solos and triples.

All cabins are ocean facing and with ample storage, beds that can be configured as a queen or two twins, a sofa, desk, television and a well-stocked mini fridge. Bathrooms are large and feature glass showers. Suite 601 on the Upper Deck (Category 7) is the largest in the Lindblad Expeditions-National Geographic Galápagos fleet with a separate living room, forward-facing balcony and floor-to-ceiling windows. Cabins on the Bridge Deck (Category 4 & 5S) all have private balconies with seating.

Enjoy the outdoors on the Upper Deck and Bridge Deck, which features a whirlpool hot tub, and windowed fitness center and spa. An outdoor café on the Lounge Deck accommodates all guests in a single open seating, as does the restaurant on the Marina Deck. The open, windowed lounge for presentations and informal gatherings has a large bar and well-stocked library and adjacent reception area.

Carrying a fleet of quick-to-deploy Mark VI Zodiacs, kayaks and stand-up paddleboards, the ship is well-equipped for exploring the islands and marine reserve. It is also stocked with snorkeling gear for all guests, including shortie wetsuits.

National Geographic Gemini provides an authentic sense of place informed by our decades-long relationships with local communities and conservation groups. Contributing to the fully immersive Ecuadorian experience on board is the passionate and knowledgeable Ecuadorian crew. Meals are designed to support the community—comprising locally sourced farm-to-table and ocean-to-table ingredients.

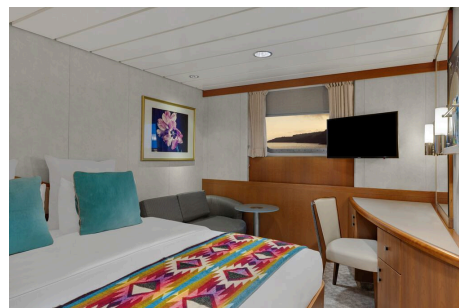


Cabin Categories

Category 1

LOUNGE DECK #411, 414, 415, 416

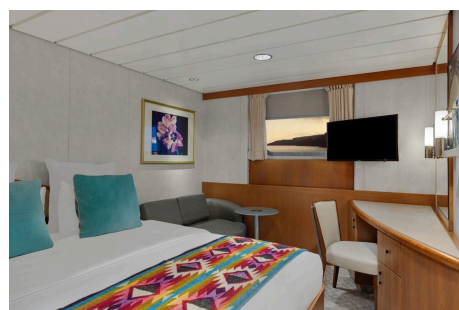
Forward cabins, outside facing with a large window, queen or two twin beds, ample storage, sitting area, desk, mini fridge and television. Bathrooms with a glass shower and amenities. 160 square feet.



Category 2 Solo

LOUNGE DECK #401 and 402

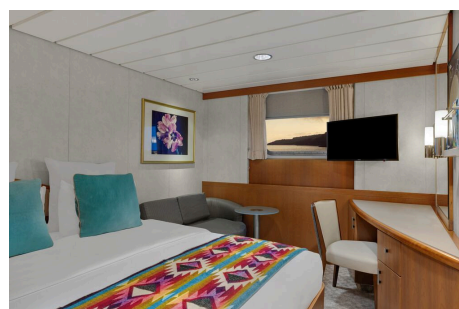
Outside facing with a large window, choice of either a queen or two twin beds, ample storage, sitting area, desk, mini fridge and television. Bathrooms with a glass shower and amenities. Equal in size and amenities to other Category 2 cabins. 160 square feet.



Category 2

LOUNGE DECK #403-408, 410, 412

Outside facing with a large window, queen or two twin beds, ample storage, sitting area, desk, mini fridge and television. Bathrooms with a glass shower and amenities. 160 square feet.



Category 4

BRIDGE DECK #500-508

Outside facing with floor-to-ceiling glass doors, 50-square-foot balcony with seating, queen or two twin beds, ample storage, sitting area, desk, mini fridge and television. Bathrooms with a glass shower and amenities. 205 square feet. 503/505 and 504/506 connect. 500/503 with convertible sofa bed for triple occupancy.



Cabin Categories

Category 5 Solo

BRIDGE DECK #509

Outside facing with floor-to-ceiling glass doors, 50-square-foot balcony with seating, one queen bed, ample storage, sitting area, desk, mini fridge, and television. Bathrooms with a glass shower and amenities. 175 square feet.



Category 5

UPPER DECK #602

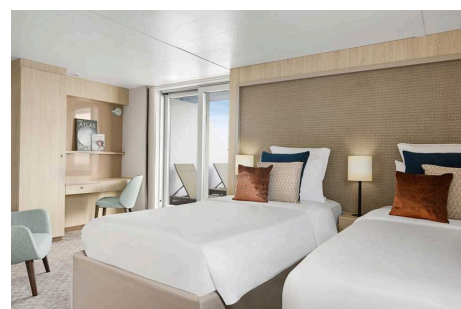
Outside facing with floor-to-ceiling glass doors, 50-square-foot balcony with seating, queen or two twin beds, ample storage, sitting area, desk, mini fridge and television. Bathrooms with a glass shower and amenities. 205 square feet. Connects to 604 as family suite.



Category 6

UPPER DECK #604

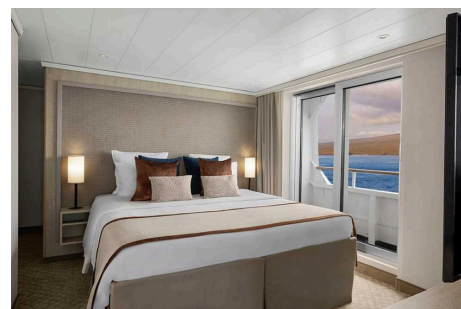
Forward facing with floor-to-ceiling glass doors, 195-square-foot forward-facing balcony with seating, queen or two twin beds, ample storage, sitting area, desk, mini fridge, and television. Bathrooms with a glass shower and amenities. 250 square feet. Connects to 602 as family suite.



Category 7

UPPER DECK #601

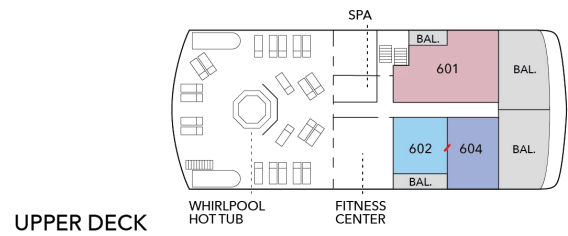
Forward facing with floor-to-ceiling glass doors, separate living room with sofa bed for triple occupancy, and 195-square-foot forward-facing balcony with seating. Bedroom with queen or two twin beds, 50-square-foot side balcony, ample storage, mini fridge, and television. Large bathroom with rain shower. 460 square feet.



Deck Plans

Upper Deck

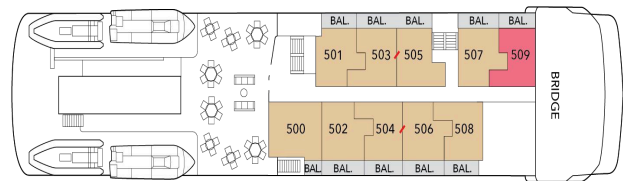
- Category 5
- Category 6
- Category 7



UPPER DECK

Bridge Deck

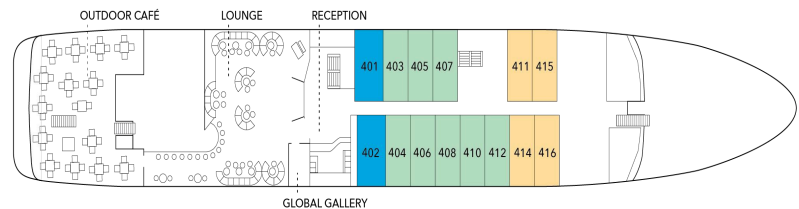
- Category 4
- Category 5 Solo



BRIDGE DECK

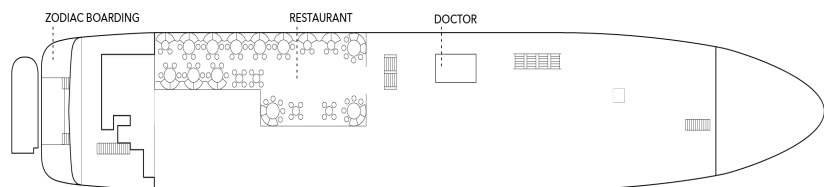
Lounge Deck

- Category 1
- Category 2 Solo
- Category 2



LOUNGE DECK

Marina Deck



MARINA DECK

Ship Amenities

Accommodations with Balconies

National Geographic Gemini offers an array of accommodation types, including 13 cabins with private balconies. Cabins on the Bridge Deck (Category 4 & 5S) have private balconies with seating. Suite 601 on the Upper Deck (Category 7) is the largest in the Lindblad Expeditions-National Geographic Galápagos fleet with a separate living room, forward-facing balcony, side balcony, and floor-to-ceiling windows. Cabin 604, which connects with Cabin 602 for the ultimate family suite, is forward facing with a large balcony.

Open-Air Decks

The Upper Deck features an outdoor shower, whirlpool hot tub with adjacent shaded seating area and a windowed fitness center and spa perfect for relaxing. The outdoor café on the Lounge Deck can accommodate all guests in a single seating.

In Good Company

Explore Galápagos in the company of veteran Lindblad Expeditions-National Geographic expedition staff, a veteran Expedition Leader, Undersea Specialist, Certified Photo Instructor, and licensed naturalists. Staff are certified as Field Educators to offer the National Geographic Explorers-in-Training program for kids and teens.



Note:

All images are for reference only. The final ship design will evolve following a multi-million-dollar renovation.



National Geographic Islander II

GUESTS

48

CABINS

26

A New Ship with Just 26 Spacious Staterooms and Suites Sailing the Galápagos Islands

Sleek and elegant, *National Geographic Islander II* sails year-round in the Galápagos Islands and elevates the guest experience to an entirely new level.

National Geographic Islander II is a gracious expedition vessel that feels like a private yacht. With only 26 staterooms and suites, and accommodating just 48 guests, she sails with a 1:1 guest-to-crew ratio.

Special features include teak decks, indoor-outdoor dining options, an impressive observation deck, and new amenities like a climate-controlled Marina and a dedicated Science Hub.

National Geographic Islander II provides an authentic sense of place, drawing on our decades of partnering with local communities and conservation groups. Contributing to the fully immersive Ecuadorian experience on board are Ecuadorian staff and locally sourced and sustainable farm-to-table and ocean-to-table culinary ingredients, as well as artisan spa elements and handcrafted textiles, art, and décor all regionally created.

The *National Geographic Islander II* celebrates Lindblad's deep connection to the islands, Ecuador, and its people with a deeply immersive and truly unique Ecuadorian cultural experience. The carefully considered food and beverage program highlights the four regions of Ecuador with locally sourced farm-to-table ingredients. Regional ingredients can even be found in spa products. From Ecuadorian shipboard staff to artwork, textiles, and décor created by local artists and artisans and Ecuadorean music heard throughout the ship, guests will experience the beauty and wonder of Ecuador both on and off the ship.



Cabin Categories

Bridge Deck

Category SU

GUEST SUITE #301, 302, 306, 308, 310, 311, 312, 316

280 sq. ft. with two panoramic windows, twin/king convertible beds, seating area with sofa, lounge chair, and marble double-sink bathrooms with rain shower. #301, 302, 306, 308, 310-312, 316. #312 & #316 are triple occupancy with sofa made up as third bed. Third person rates are one-half the double occupancy rate. Connecting Suites: #301/303, 302/306



Category SO

SOLO SUITE #315, 318

280 sq. ft. with two panoramic windows, twin/king convertible beds, seating area with sofa, lounge chair, and marble double-sink bathrooms with rain shower; dedicated solo but otherwise identical to SU category.



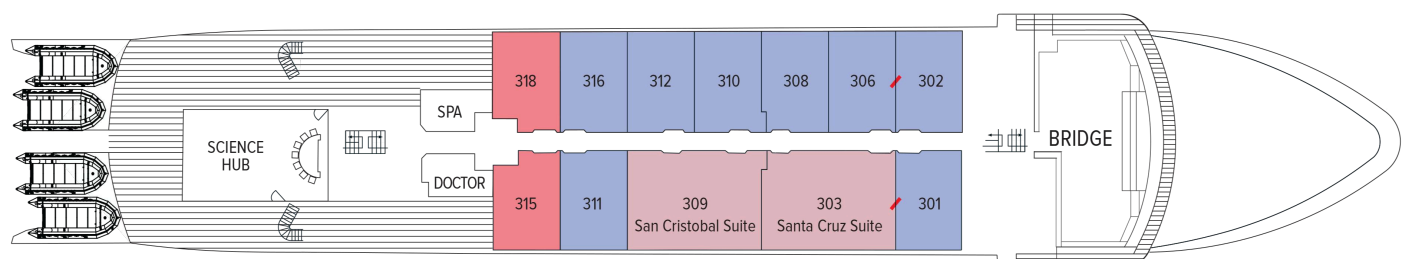
Category IS

ISLANDER SUITE #303, 309

515 sq. ft. with two panoramic windows, twin/king convertible beds, separate living areas with sofa, table and chairs, two lounge chairs, larger bathroom with both rain shower and tub. Triple occupancy with sofa made up as third bed. Third person rates are one-half the double occupancy rate. Connecting Suites: #301/303, 302/306



Bridge Deck



Cabin Categories

Main Deck

Category IS

ISLANDER SUITE #209, 218

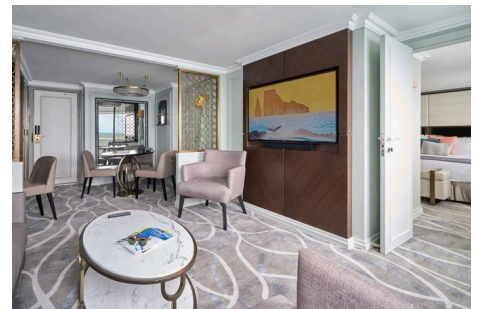
515 sq. ft. with two panoramic windows, twin/king convertible beds, separate living areas with sofa, table and chairs, two lounge chairs, larger bathroom with both rain shower and tub. Triple occupancy with sofa made up as third bed. Third person rates are one-half the double occupancy rate.



Category SU

GUEST SUITE #203, 205-208, 210-212, 215, 220

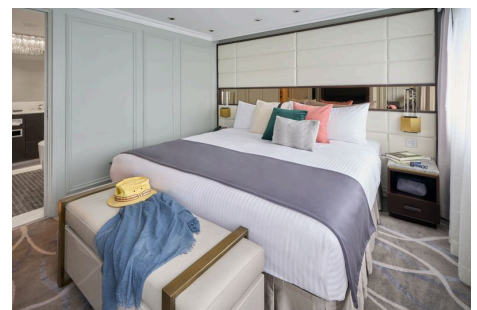
280 sq. ft. with two panoramic windows, twin/king convertible beds, seating area with sofa, lounge chair, and marble double-sink bathrooms with rain shower. Connecting Suites: #205/207.



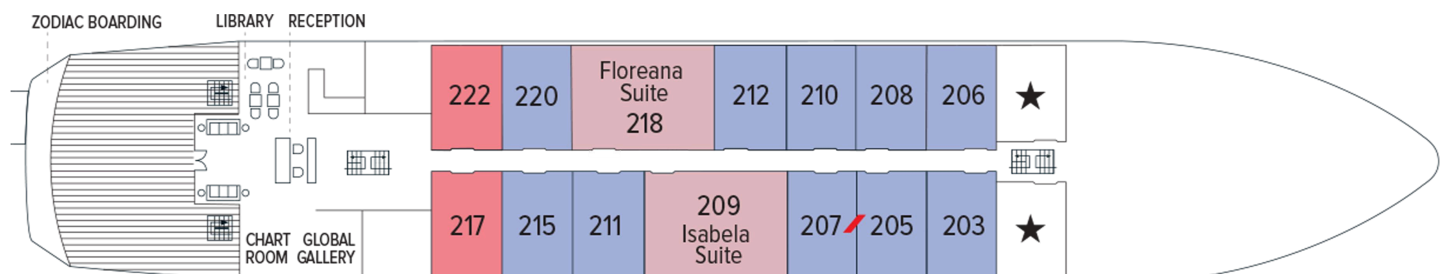
Category SO

SOLO SUITE #217, 222

280 sq. ft. with two panoramic windows, twin/king convertible beds, seating area with sofa, lounge chair, and marble double-sink bathrooms with rain shower; dedicated solo but otherwise identical to SU category.

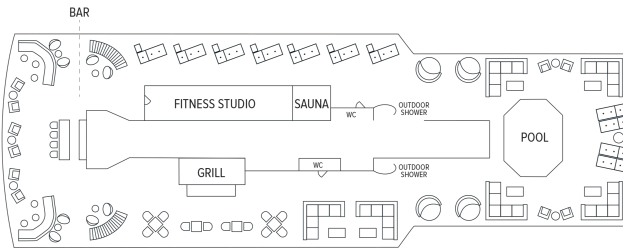


Main Deck

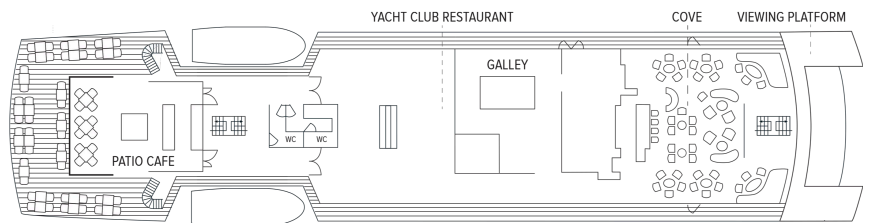


Deck Plans

Observation Deck

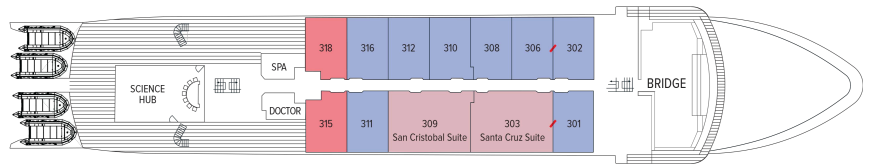


Promenade Deck



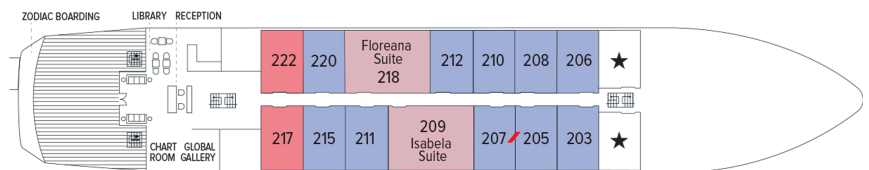
Bridge Deck

- Category SU
- Category SO
- Category IS



Main Deck

- Category IS
- Category SU
- Category SO



Marina Deck



Ship Amenities

Indoor-Outdoor Dining

Enjoy meals in the expanded al fresco Patio Café, sophisticated Yacht Club Restaurant on the Promenade Deck or Grill on the Observation Deck, where there's also a bar and ample seating to host events. Here, guests gather for wine tastings, chocolate tastings and Bubble-Qs—BBQs made extra celebratory with Champagne. The convenient 24-hour beverage and snack stations in the Bar and Library are other welcome amenities.



Science Hub

Outfitted with scientific equipment, the exciting new Science Hub continues the Lindblad Expeditions-National Geographic legacy of supporting conservation and research. Equipped for underway oceanography, interactive video presentations and an enhanced photo experience, the Science Hub is also a place for young guests in the National Geographic Explorers-in-Training program to experience hands-on learning.

Public Spaces

The ship's public spaces enhance the connection to the islands. Guests will find an open Bridge, surrounding teak decks, and a forward-viewing area. Two dining areas accommodate all guests in a single seating. The Cove, which has a bar, is the setting for daily Recaps. Other ship features include a Reception area with glass doors that lead to an open teak Viewing Deck, a Plunge Pool, a Chart Room, the Global Gallery, Library, Marina, Swim Platform and Zodiac boarding area.



Expedition Tools

National Geographic Islander II carries a fleet of kayaks and stand-up paddleboards, a glass-bottom boat, an expanded flotilla of versatile Zodiacs, complete snorkel gear for adults and children, video microscope, and Science Hub.

The newly refitted teak-appointed marina is spacious and climate-controlled, designed for guests to comfortably get in and out of expedition gear.

Expanded Expedition Staff

The Expedition Team, led by a veteran Expedition Leader, includes a five Naturalists, Undersea Specialist, Certified Photo Instructor and Certified Field Educators who run our exclusive National Geographic Explorers-in-Training for kids and teens.

Special Offers

on extensions, and may not be combined with other offers. Call for details.

SUITE EXCLUSIVES

Spacious living areas and incredible views immerse you in the beauty of your marine surroundings.

Our new Suite Exclusives package helps make your voyage all the more memorable. [Learn more](#)

CELEBRATE LIFE'S MILESTONES

Celebrate a milestone with a group of eight or more and enjoy a special amenity package including: 5% savings on voyage fares, custom group photo, US\$150 shipboard credit for the group, and other special gifts. Milestone celebration to be communicated at time of booking.

COMBINING OFFERS

Certain offers may be combinable, up to two savings opportunities, except where noted otherwise.

For example, travel with a group of 8 or more on back-to-back expeditions, and take advantage of both savings.

10% OFF BACK-TO-BACK VOYAGES

Save 10% on consecutive departures, applicable on voyage fares only and not valid on extensions or airfare. Valid for new bookings only, subject to availability, and may not be combined with other offers. Call for details.

SAVE 5% TRAVELING AS A GROUP

Save 5% when traveling as a group of 8 or more people. Valid for new bookings only on select departures, subject to availability, not applicable

INCLUDED IN PRICE

All accommodations aboard ship or in hotels per itinerary; all meals as indicated in the itinerary, both aboard and onshore; beer, wine, cocktails, liquors and spirits aboard the ship (except certain premium brands which are available for purchase); hors d'oeuvres, 24-hour access to snacks, premium coffees and teas, non-alcoholic beverages, and filtered water; excursions; arrival/departure transfers are included for hotel arrangements made through National Geographic-Lindblad Expeditions; gratuities in Guayaquil, Quito and Peru to local guides, drivers and tour escort; exploration tools curated to destination, such as Zodiacs, stand-up paddleboards, kayaks, snorkeling equipment (including wetsuits, masks, and fins); guidance and company of our leading expedition staff; assistance by the Lindblad Expeditions-National Geographic Certified Photo Instructor; presentations by expedition staff and expert guest speakers; basic Wi-Fi aboard ship; complimentary reusable water bottle; onboard physician consultations; morning stretch classes and 24-hour access to exercise equipment; 24-hour access to lounges, observation decks, library, and other shared spaces; park and site entrance fees, special access permits, and port taxes. Unused services or items included in our programs are non-refundable.

NOT INCLUDED IN PRICE

Airfare* (except flights when indicated as included); pre- and post-expedition extensions; additional hotel nights (except when indicated as included); crew gratuities; private transfers; laundry, spa treatments, and phone services (except when indicated as included); travel protection plans; and passport, visa, and immigration fees.

*Recommended flight costs include flight(s) that take place during the date range of your trip to transport travelers from one itinerary destination to another. This cost also includes ground transportation, luggage transfer, and airport assistance. If you prefer to arrange your own flights privately, have alternate means of transport, or wish to modify at a later time, please contact an Expedition Specialist at 1.833.400.0831

Additional costs associated with medical services outside onboard physician consultation.

TRAVEL PROTECTION PLAN

We strongly recommend our guests to take advantage of our Travel Protection Plan. This plan offers comprehensive coverage to protect you from cancellation fees, costs incurred due to trip delays/interruption, damage or loss of baggage, medical assistance, and evacuation during your travels. Our Travel Protection Plan is available for U.S. residents only, and may be purchased any time prior to final payment due date, Travel Protection premiums are non-refundable once plan is purchased. Learn more about our Travel Protection "Plus" Plan: <https://www.expeditions.com/terms-conditions/travel-protection-plan/>

CANCELLATION POLICY

Review our cancellation policy: <https://www.expeditions.com/cancellation-policy/>