



Mediterranean Aboard National Geographic Orion, Mediterranean, Europe, Croatia and the  
43° 30' N 16° 26' E

## Ancient Mediterranean: Exploring Greece, Croatia and Albania

The experts at *Food & Wine* magazine and National Geographic-Lindblad Expeditions have come together to create this immersive exploration of the Dalmatian Coast's sun-soaked beaches, charming port towns, rich maritime history, and eclectic cuisine. Sail between Greece, Albania, and Croatia, delving into ancient empires and their archaeological treasures and visiting fascinating UNESCO World Heritage sites, from Delphi to Dubrovnik. Soak in the Ionian Sea's idyllic turquoise waters, and encounter the region's lesser-known gems, including outlying Croatian isles and vestiges of antiquity in Albania. A top team of naturalists—including experts on history and culture—will illuminate all we see, and a wine expert will guide us through tastings of some of the region's best wines, each personally selected by *Food & Wine* magazine's Executive Wine Editor, Ray Isle.

From

**\$ 7,720** / per person  
Does not include flights



### DATES

Jun, Aug and  
Sep



### DURATION

8 Days



### SHIPS

*National Geographic Orion*



### STARTS AT

Split, Croatia



### ENDS AT

Athens,  
Greece

**Itinerary note:** Routing may vary and stops may be subject to modification and/or permitting. Activities are included in your voyage price; however, some departures may offer optional premium excursions at an additional cost.

## Highlights

- ★ Indulge in gourmet menus guided by the rhythms of the season, featuring sustainable ingredients primarily sourced from the Mediterranean
- ★ Navigate the iconic Corinth Canal, a spectacularly scenic cut that is inaccessible to larger ships
- ★ Immerse yourself in Delphi, the center of ancient Greek civilization, once home to the famed Oracle of Delphi
- ★ Explore Dubrovnik—the pearl of the Adriatic—while strolling atop its ancient walls, trying your hand at oystering, or participating in a cooking or silk embroidery class





## Day by day

### ■ DAY 1

#### Split, Croatia / Zadar / Embark Ship

Arrive in Split, the largest city on the Dalmatian coast, and transfer to Zadar to embark *National Geographic Orion*. Settle into your cabin, enjoying your first Dalmatian sunset as you set sail.

Meals included: dinner

### ◇ DAY 2

#### Komiža, Vis Island

One of the outermost Croatian islands, Vis was ruled successively by the ancient Greeks, Romans, Venetians, Austrians and Italians. It became a central Yugoslav military base during World War II and only opened to tourists in the 1990s, making it less developed and less populated than many of its neighbors. Spend the morning exploring one of the island's sea caves (conditions permitting).

We arrive in Komiža after lunch and embark on your choice of several optional experiences, including a hike to the headquarters of Yugoslav resistance leader Josip Broz Tito, where he hid troops and weapons in extensive underground tunnels at the end of World War II and into the Cold War. Venture to hillside barracks and hidden bunkers, or spend the afternoon enjoying the charming downtown.

Meals included: breakfast, lunch, dinner

### ◇ DAY 3

#### Dubrovnik

Wake up anchored off the ancient walls of Dubrovnik's Old City—a UNESCO World Heritage site that is considered one of the best-preserved medieval towns in the world. Choose from several experiences to customize your day. Participate in a guided walk of the fortified walls, go oystering

and enjoy a seafood lunch in the neighboring town of Ston, take part in an interactive cooking class in a quaint rural home or learn about traditional silk embroidery at a local workshop.

Meals included: breakfast, lunch, dinner

### ◇ DAY 4

#### Krujë, Albania / Divjakë-Karavasta National Park

After docking in Durrës, drive to Albania's ancient capital of Krujë, just north of its modern-day capital of Tirana. Wander the stalls of the medieval bazaar, visit the Ethnographic Museum and tour the museum dedicated to Albania's larger-than-life national hero, Skanderbeg—the warrior who led a 15th-century rebellion against the Ottoman Empire. Cap off the day with a stirring folkloric performance. Or, if you're interested in birding, visit the lagoons of Divjakë-Karavasta National Park, home to over 200 avian species, including the greater flamingo, Kentish plover and the extremely rare dalmatian pelican.

Meals included: breakfast, lunch, dinner

### ◇ DAY 5

#### Butrint, Albania / Corfu, Greece

Arrive at Butrint National Park, a UNESCO World Heritage site that was first settled by the Greeks in the 7th century B.C. The park is known for its well-preserved Roman ruins. This mesmerizing tapestry of ancient ruins is a wonderful representation of Albania's lush landscapes.

In the afternoon, cross into Greece. Sandwiched between two fortresses, Corfu's World Heritage-listed Old Town, a UNESCO World Heritage center, begs to be explored. Choose to wander the maze of Venetian lanes and shaded town squares, or

enjoy a walking tour of the 6th-century Old Fortress of Corfu.

Meals included: breakfast

Meals included: breakfast, lunch, dinner

## ◇ DAY 6

### Kefalonia

Your Expedition Leader and local guides will choose one of the many picturesque beaches on the island of Kefalonia, bordered by the idyllic Ionian Sea.

Soak in the vivid blue waters—a true photographer's delight. Stroll along the shoreline, or swim, kayak or paddleboard in the beautiful sea.

Meals included: breakfast, lunch, dinner

## ◇ DAY 7

### Delphi / Corinth Canal

Visit the UNESCO World Heritage site of Delphi, the center of the ancient Greek world. The ruins here are home to the Temple of Apollo—Greece's most important shrine—where the Oracle of Delphi delivered divine prophecies. Your onboard local guides will share the city's storied past as you explore the temple and other important sites.

Later, navigate the historic Corinth Canal, slipping between the 300-foot limestone walls that tower above both sides of our vessel. Built in the late 19th century, the canal is too small for most modern-day ships, but the *National Geographic Orion* is perfectly sized for the transit to the Gulf of Corinth and Ionian Sea.

Meals included: breakfast, lunch, dinner

## ■ DAY 8

### Lavrio, Greece / Disembark Ship / Athens

Disembark in Lavrio and transfer to the Athens airport for flights home or explore more on a post-voyage extension in Athens or Crete.

2026 (Southbound)

Split, Croatia → Athens, Greece

2026 Departure Dates

Aboard *National Geographic Orion*

24 Jun		
25 Aug		

2027 Departure Dates

Aboard *National Geographic Orion*

20 May		
28 Aug		

Alternative Routes

Visit [Expeditions.com](http://Expeditions.com) for more information.

2026 Departure Dates

17 Jun, 04 Aug, 28 Sep

2027 Departure Dates

13 May, 21 Aug



## ***National Geographic Orion***

---

**Guests**

102

**Cabins**

53

---

Joining the Lindblad fleet in 2013, the state-of-the-art *National Geographic Orion* serves as a luxurious base camp for voyages to the far-flung corners of the planet.

Built in Germany by the Cassens shipyard, the 102-guest *National Geographic Orion* was created with a high-ice class to be able to venture safely into polar regions. A ship of her size is seldom built with such ice-cutting ability, which makes her a rarity. She is yacht-scale, yet rugged enough to venture far afield, making her a perfect addition to the Lindblad fleet, which she joined in 2013. Her size and nimbleness offer the perfect combination of safety and liberty to voyage untrammelled locations. In fact, *National Geographic Orion* currently holds the distinction of having sailed further south than any other Lindblad vessel.

Her menu, created by famed Australian chef, Serge Dansereau, owner of Sydney's acclaimed Bather's Pavilion restaurant, enormously popular with *National Geographic Orion's* guests, so impressed Sven Lindblad, that Serge, a chef-owner who shared the Lindblad commitment to serving local and sustainable food, was enlisted to design the dining program for the entire Lindblad-National Geographic fleet.

*National Geographic Orion* is gracious and intimate, with a rewarding, almost clubby feeling. Of her many amenities and features, the most appealing is her outside deck space which beckons in the balmy reaches of the Pacific, and on those days in Antarctica when the midnight sun and the spectacle of the ice makes going indoors, let alone going to bed, impossible.



# Cabin Categories

## Category 1

**Main Deck:** #316, 318-321

Cabins feature a luminous oval window and configurable beds: two single beds that can be converted to a queen. An armchair, reading lamps, a flat screen TV, two bedside tables, coffee table, desk, and climate controls complete the amenities. Marble bathrooms are generously sized and include a spacious shower stall with a glass door.



## Category 2

**Main Deck:** #302-312, 314, 315, 317

Cabins feature a luminous oval window and configurable beds: two single beds that can be converted to a queen. An armchair, reading lamps, a flat screen TV, bedside table, coffee table, desk, and climate controls complete the amenities. Marble bathrooms are generously sized and include a spacious shower stall with a glass door.



## Category 3

**Upper Deck:** #401-412, 414-419

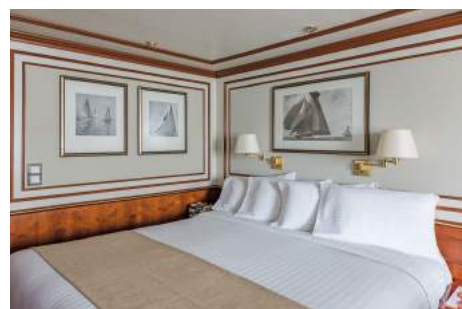
These suites feature a sitting area with a large window, a sofa—except slightly smaller #401 & #402—an armchair or two, writing/laptop desk, reading lamps, coffee table, flat screen TV, bedside table, & climate controls. Beds are configurable (call for details). Marble bathrooms include a spacious shower stall with a glass door.



## Category 4

**Bridge Deck:** #511, 515

These two suites feature separate sleeping and sitting areas, with a chair and armchair, coffee table, and a two-cushion sofa facing an expansive window. Beds are configurable (call for details). Ample storage, reading lamps, a flat screen TV, and climate controls complete the amenities. Marble bathrooms are generously sized and include a spacious shower stall with a glass door.



## Category 5

**Bridge Deck:** #501, 503-506, 508

These spacious suites feature open living areas and sliding glass doors opening to a shared French balcony. Beds are configurable (call for details). A separate sitting area with armchairs and a sofa, a writing/laptop desk, coffee table, well-placed reading lamps, a flat screen TV, and climate controls complete the decor. Marble bathrooms are generously sized and include a spacious shower stall with a glass door.



## Category 6

**Bridge Deck:** #502, 507, 509\*, 510

These large, elegant suites feature a French balcony, except for #509 which has double windows. Each provides a separate living area with a sofa and two armchairs, coffee table, except for #502, which uniquely offers a 'soaking tub with a view' in addition to a shower stall and expansive vanity. All cabins have reading lamps, a flat screen TV, and climate controls. Marble bathrooms are generously sized and include a spacious shower stall with a glass door.



## Category 1 Solo

**Main Deck:** #301, 322, 323

These solo cabins feature a window or two portholes, a queen-size bed, except for #301 which has a double bed, writing desk and chair, climate controls, reading lamps, coffee table, two bedside tables, and a TV. Marble bathrooms are generously sized and include a roomy shower stall with a glass door.



## Category 3 Solo

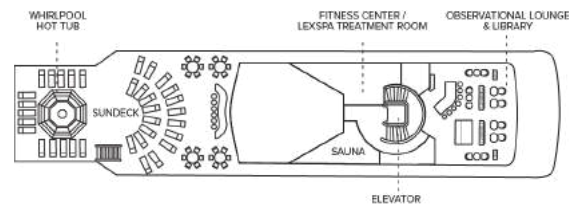
**Upper Deck:** #512

This solo suite features two single beds and two large windows, plus two armchairs and a small table, reading lamps, coffee table a flat screen TV, and climate controls. The marble bathroom is generously sized and includes a spacious shower stall with a glass door.



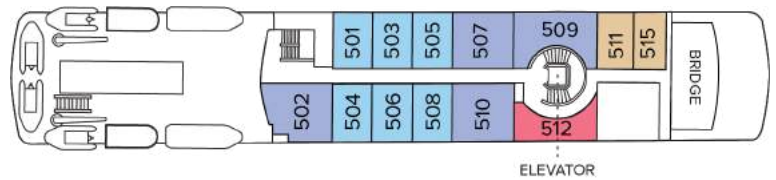
# Deck Plans

## Observation Deck



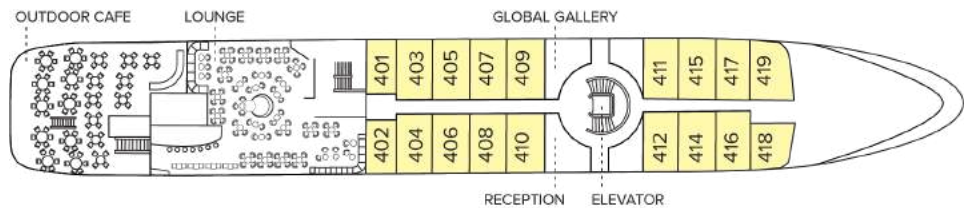
## Bridge Deck

- Category 4
- Category 5
- Category 6
- Category 3 Solo



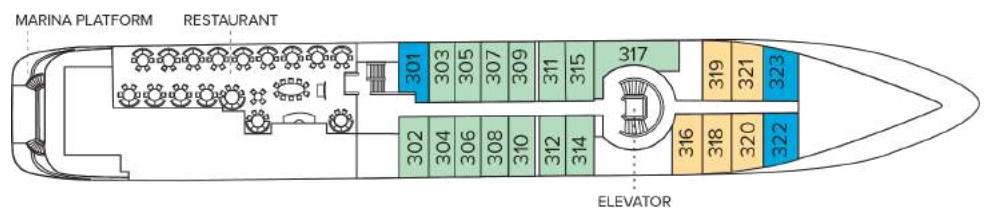
## Upper Deck

- Category 3



## Main Deck

- Category 1
- Category 2
- Category 1 Solo



## Expedition Deck



# Ship amenities

## Public Areas

Reception; two dining areas; lounge with bar and state-of-the-art presentation facilities; B&H Photo locker; sundeck with a whirlpool hot tub that doubles as a plunge pool in warm climates; observation lounge and library; global gallery; a marina platform; plus open access to the Bridge, the Captain, officers and on-duty wildlife spotters.

## Meals

Meals are served in the dining room, or weather permitting, the outdoor café, at a single seating with unassigned tables for an informal atmosphere and easy mingling. Menus feature sustainable choices, local where possible.

## Cabins

All cabins face outside with windows or portholes, private bathroom, and climate controls. Cabins feature a coffee table, lounge chair, desk, phone, TV with on demand entertainment, multiple outlets and USB, mini refrigerator, and safe. Luxury linens and pillows. Botanically inspired shampoo, conditioner, shower gel, and lotion are all available in cabin bathrooms, as well as an Expedition Essential Kit. Hair dryers, complimentary insulated water bottles and a National Geographic Atlas is available in each cabin.

## Expedition Equipment

Zodiac landing craft, a fleet of double kayaks, a crow's nest camera, a hydrophone, underwater video cameras, video microscope, and an ROV. Plus, for South Pacific voyages: snorkeling gear for all guests, scuba gear for a number of pre-qualified guests, stand-up paddleboards, glass-bottom Zodiac, and splash-cam.

## Special Features

A full-time doctor, undersea specialist, National Geographic photographer, Lindblad-National Geographic certified photo instructor and video chronicler. On all South Pacific voyages, there are a minimum of two dive masters. A central staircase, and elevator reaches all decks. Enjoy teatime, daily. And the smoothies served after the sunrise stretch sessions on the sundeck in Polynesia. Don't miss either opportunity.

## Wellness

A fitness center, LEXspa treatment room and sauna, staffed by wellness specialists.

## Self-Disinfecting Ships

ACT Clean Coat™ is a light-activated, self-disinfecting cleaning process that continuously breaks down viruses, bacteria, mold, and airborne allergens across all ship surfaces. This non-toxic, chemical-free system also helps us save over one million gallons of water each year in our cleaning procedures.

## Special Offers

### UP TO \$2,000 AIR CREDIT

Book from August 12, 2025, to September 15, 2025. Receive an air credit up to \$2,000 per person, deducted from air fare prior to any additional applicable savings with the purchase of cabin fare on select 2026 European departures.

Receive an air credit up to \$1,000 per person on cabin categories and up to \$2,000 per person on suite categories on select departures aboard *National Geographic Orion*, *National Geographic Endurance*, *National Geographic Explorer*, *Sea Cloud II*, and *Connect*.

To qualify for the offer, airfare must be ticketed by Lindblad Expeditions. In the case that airfare at the time of booking is higher than \$1,000 per person for cabins and higher than \$2,000 per person for suites, guest will be required to pay any amount in excess of \$1,000 per person for cabins and \$2,000 per person for suites.

Valid for new bookings only on select 2026 European departures, subject to availability, not applicable on extensions and may not be combined with other offers. Baggage fees may incur additional costs and seat assignments may not be guaranteed.

All offers are subject to Lindblad Expeditions' standard Terms & Conditions. Full payment terms and cancellation policies apply. Call an expedition specialist or contact your Travel Advisor for details.

### SUITE EXCLUSIVES

Spacious living areas and incredible views immerse you in the beauty of your marine surroundings. Our new Suite Exclusives package helps make your voyage all the more memorable. [Learn more](#)

### SAVE 5% TRAVELING AS A GROUP

Save 5% when traveling as a group of eight or more people. Valid on voyage fares only and not applicable on extensions or airfare. Deposit, final payments, and cancellation policies for group travel vary from our regular policies. Valid for new bookings only, subject to availability, and may not be combined with other offers. Call for details.

### CELEBRATE LIFE'S MILESTONES

Celebrate a milestone with a group of eight or more and enjoy a special amenity package including: 5% savings on voyage fares, custom group photo, US\$150 shipboard credit for the group, and other special gifts. Milestone celebration to be communicated at time of booking.

### PAY BY DEBIT: EARN A \$100 ONBOARD CREDIT

The \$100 onboard credit offer is applied after the final payment and requires 85% of the cost of the voyage to be placed on a debit card. Maximum of one \$100 onboard credit per cabin. The \$100 onboard credit is a non-refundable, non-transferable credit that can be used for various onboard purchases such as global gallery and spa treatments. It has no cash value, cannot be refunded if not fully utilized, and will be forfeited if not fully redeemed by the end of the voyage. This offer is combinable with other offers. If the booking is altered or canceled, the onboard credit may be forfeited, and it cannot be transferred if the booking is moved to another guest. Lindblad Expeditions reserves the right to modify or cancel the offer without prior notice. Offer applies to Lindblad Expeditions' owned ships only. Offer valid only for Debit Cards issued in the United States for payments made from the United States.

---

## COMBINING OFFERS

Certain offers may be combinable, up to two savings opportunities, except where noted otherwise.

For example, travel with a group of 8 or more on back-to-back expeditions, and take advantage of both savings.

## Included in price

All accommodations aboard ship or in hotels per itinerary; all meals as indicated in the itinerary, both aboard and onshore; beer, wine, cocktails, liquor and spirits aboard the ship (except certain premium brands which are available for purchase); hors d'oeuvres, 24-hour access to snacks, premium coffees and teas, non-alcoholic beverages, and filtered water; excursions and airport transfers to and from recommended flights, as indicated in the itinerary; crew gratuities; exploration tools curated to destination, such as Zodiacs and kayaks; guidance and company of our leading expedition staff; assistance by the National Geographic Photographer and Lindblad Expeditions-National Geographic certified photo instructor; access to the OM System Photo Gear Locker; presentations by expedition staff and expert guest speakers; complimentary reusable water bottle; onboard physician consultations; morning stretch classes and 24-hour access to exercise equipment; 24-hour access to lounges, observation decks, library, and other shared spaces; park and site entrance fees, special access permits, and port taxes. Unused services or items included in our programs are non-refundable.

## Not included in price

Airfare (except flights when indicated as included); pre- and post-expedition extensions; additional hotel nights (except when indicated as included); private transfers; laundry, spa treatments, scuba diving for pre-qualified divers on select voyages\*, Wi-Fi, and phone services (except when indicated as included); travel protection plans; and passport, visa, and immigration fees.

### \*Scuba Diving Requirements

- Dives can be challenging so divers must have ample previous experience
- Divers need at least 25 lifetime dives if you're advanced open water and at least 35 if you're just open water
- Divers need to have completed an open water dive or professional refresher course within 12 months of the voyage
- Divers need to receive medical clearance to dive from a doctor (form provided upon registration) and provide proof of dive insurance

Additional costs associated with medical services outside onboard physician consultation.

## Travel protection plan

We strongly recommend our guests to take advantage of our Travel Protection Plan. This plan offers comprehensive coverage to protect you from cancellation fees, costs incurred due to trip delays/interruption, damage or loss of baggage, medical assistance, and evacuation during your travels. Our Travel Protection Plan is available for U.S. residents only, and may be purchased any time prior to final payment due date. Travel Protection premiums are non-refundable once plan is purchased. Learn more about our Travel Protection "Plus" Plan: <https://www.expeditions.com/terms-conditions/travel-protection-plan/>

## Cancellation policy

Review our cancellation policy: <https://www.expeditions.com/cancellation-policy/>