









, Arctic, Greenland, Canada & North America

67° 0' N 50° 43' W

# Fabled Lands of the North: Greenland to Newfoundland

Embark on an expedition deep into the remote fjords and wild coastlines of Baffin Island and Labrador, where sheer cliffs rise from icy waters and centuries of history are etched into the land. Trace routes once paddled by Inuit hunters and explored by Norse seafarers, guided by our expert staff archaeologists who bring the stories of past and present Inuit settlements to life. Glide by Zodiac beneath towering rock walls, hike along tundra valleys and stand in awe before glaciers tumbling into the sea. From Greenland's iceberg-dotted Disko Bay to the rugged heights of the Torngat Mountains, each day offers a rare encounter with both the natural grandeur and the living heritage of the Arctic.

From  
**£11,069** / per person  
 Does not include flights

 <b>DATES</b> Aug and Sep	 <b>DURATION</b> 16 Days
 <b>SHIPS</b> <i>National Geographic Resolution</i> <i>National Geographic Explorer</i>	
 <b>STARTS AT</b> Nuuk, Greenland	  <b>ENDS AT</b> St. Johns, Newfoundland

**Minimum Age Requirement:** Any children booked on Antarctic or Arctic voyages must be at least 4 years old at time of embarkation.

## Highlights

- ★ Explore Western Greenland's dramatic coastline, from the colorful streets and cultural heritage of Sisimiut to the towering icebergs of Ilulissat in UNESCO-listed Disko Bay
- ★ Venture deep into Baffin Island's secluded fjords and striking Arctic landscapes, home to rich Inuit history and abundant wildlife
- ★ Trace the wild Labrador coast, visiting Torngat Mountains National Park, remote outposts, and stunning passages like the narrow Mugford Tickle
- ★ Discover remote eastern Newfoundland's rugged cliffs, hidden coves and fishing villages steeped in maritime tradition





# Day by day

## ■ DAY 1

### Reykjavík, Iceland / Embark Ship

Arrive in Reykjavík, the world's northernmost capital, which lies just below the Arctic Circle. Transfer from the airport to the city and spend the day exploring at your own pace. Check in with the hospitality desk this afternoon to make final arrangements before your charter flight the following day.

Meals included: dinner

## ◇ DAY 2

### Reykjavík / Nuuk, Greenland / Embark Ship

Fly from Reykjavík on the recommended flight to Greenland's thriving capital city of Nuuk. Settle into your cabin and enjoy a scenic sailing out of the Nuuk fjord and into the open water of the Davis Strait, as the ship navigates north along the coastline.

Meals included: breakfast, lunch, dinner

## ◇ DAYS 3-5

### Greenland's West Coast

Over these next three days, sail into deep fjords and witness the powerful glaciers that reach back to the famed Greenlandic Ice Cap. Zodiac cruise along glacier faces or hike along moraines recently left by retreating glaciers. Along the way, arrive to Sisimiut, a former whaling port, and enjoy your choice of guided walks through the sights and sounds of the village, including Dog Town or Sallinnguit, a portion of the Arctic Circle Trail that leads into the Greenlandic backcountry, or visit local entrepreneurs and artists. Finally, explore Disko Bay, filled with icebergs calved off of the

most active glacier in the world, Sermeq Kujalleq, and take advantage of expedition activities as you explore Disko Island and the surrounding fjords, weather permitting.

Meals included: breakfast, lunch, dinner

## ◇ DAYS 6-10

### Baffin Island

Baffin Island is the largest island in Canada, spanning over 195,000 square miles. Its eastern coast sits on the edge of the high Arctic archipelago and is filled with steep fjords, glaciers, coves, tundra and wildlife that includes walruses, seals and a variety of whales. This awe-inspiring landscape, which has drawn curious explorers for centuries, continues to beckon, and your days spent here will be truly expeditionary as your captain and expedition leader respond to the elements and wildlife sightings encountered along the way.

Meals included: breakfast, lunch, dinner

## ◇ DAYS 11-14

### Exploring the Labrador Coast

Spend four days tracing the rugged, wild coast of Labrador, with expedition activities such as Zodiac cruising and kayaking along the islands, fjords and inlets that create this dynamic landscape. Keep a watchful eye on the Bridge as the ship navigates along the coast, which is dotted with icebergs flowing down from Greenland and the North Pole. Visit the fjords of Torngat National Park, and delve into the region's Inuit history with your onboard archeologist. Stop at deserted outposts, watch for peregrine falcons and other birds soaring over the rocky shorelines of the spectacularly narrow Mugford Tickle, and take in the impressive

Kaumajet Mountains. Head into the tiny fishing settlement of Indian Harbour to observe vast colonies of common murre along the sea cliffs before continuing on to scenic Battle Harbour to discover the legacy of this historic fishing village.

Meals included: breakfast, lunch, dinner

◇ DAYS 15-16

## Eastern Newfoundland

Cliffs, fjords and beaches grace the northeastern tip of Newfoundland. Hike, kayak and Zodiac cruise along this stunning coastline while keeping a watchful eye for migrating birds and whales as the ship sails south.

Meals included: breakfast, lunch, dinner

■ DAY 17

## St. John's, Newfoundland / Disembark Ship

Today, disembark in St. John's and transfer to the airport for your flight home.

Meals included: breakfast

## Expedition

Nuuk, Greenland → St. Johns, Newfoundland

### 2027 DEPARTURE DATES

Aboard *National Geographic Explorer*

15 Aug				
--------	--	--	--	--

Aboard *National Geographic Resolution*

08 Sep				
--------	--	--	--	--



## National Geographic Resolution

GUESTS

138

CABINS

76

**The sister ship to *National Geographic Endurance*, she explores polar & temperate regions**

Our second new polar build, *National Geographic Resolution*, is named to honor the second voyage of the legendary Captain James Cook. A fully-stabilized vessel of the highest ice class (PC5 Category A), she will enable adventurous guests to go where few have or can. Resolution's most striking exterior feature is her distinctive profile, the patented X-Bow®, a game-changing design that guarantees the smoothest, most comfortable ride in all kinds of conditions; and since it eliminates bow impact, a quieter ride, as well.

An equally impressive feature may well be her capacity: she carries just 138 guests, a commitment to expedition excellence over scale. Scandinavian-inflected, luxuriously appointed, her inviting interiors would be a destination in themselves. Because she is a Lindblad expedition ship, however, her attention is focused on the world outside – with acres of window glass to keep you connected to the stunning views beyond the pane, and a fleet of expedition tools to get you out exploring.

*National Geographic Endurance* and *National Geographic Resolution* are next-generation expedition ships. Purpose-built for polar navigation. Fully stabilized, highly strengthened, ice-class Polar Code PC5 (Category A) vessels, they are designed to navigate polar passages year-round, and safely explore uncharted waters, while providing exceptional comfort. The patented X-bow<sup>®</sup> is key to their design; its powerful wave-slicing action provides an extremely smooth ride even in adverse conditions, and even reduces spray on deck for superior observation. They carry a full suite of expedition tools, and offer a variety of experience enhancing amenities.



# Cabin Categories

## Category 1

FORE DECK #404, 406, 408, 411, 413, 415

Cabin with two large windows, two singles that can convert to a queen, writing desk and chair, two bedside tables, window sofa, coffee table, and a closet.



## Category 2

FORE DECK #410, 412, 414, 416-419, 421-427

Cabin with two large windows, two single beds that can convert to a queen, window sofa, two-seat sofa, coffee table, writing desk with an office chair, two bedside tables, coffee table, and a closet.



## Category 3

MAIN DECK #512-524

Cabin with balcony that features two balcony chairs, hammock, and a table; two single beds that convert to a queen; convertible sleeper sofa; writing desk with a chair; two bedside tables; coffee table; and a closet.



## Category 4

LOUNGE DECK #608, 610, 612, 613-623

Cabin with balcony that features two balcony chairs, hammock and a table; two single beds that can convert to a queen; pull-out sofa; coffee table; writing desk with chair; two bedside tables; and a closet.



## Category 5

BRIDGE DECK #700-707, 712, 713, 715, 717

Cabin with balcony that features two balcony chairs, hammock, and a table; two single beds that convert to a queen; convertible sleeper sofa; coffee table; writing desk with chair; two bedside tables; and a closet.



## Category 6

BRIDGE DECK #714

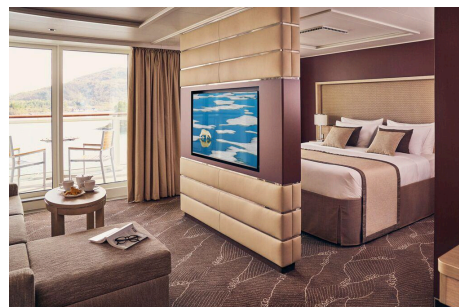
Junior suite with balcony that features two balcony chairs, hammock, and table; two single beds that convert to a queen; pull-out sofa; writing desk with chair; two bedside tables; coffee table; espresso maker and a closet. Guests receive priority access to one spa treatment and one igloo reservation and complementary laundry per departure.



## Category 7

BRIDGE DECK #708-711, 716, 718, 719, 721

These large balcony suites feature two balcony chairs, hammock, and table; two single beds that can convert to a queen; pull-out sofa; coffee table; writing desk and chair; espresso maker; and a large walk-in closet with full length mirror. Expanded bathroom has a double vanity, bathtub, towel warmer and rain shower. Guests receive priority access to one spa treatment and one igloo reservation and complementary laundry per departure.



## Category A Solo

MAIN DECK #504-510, 513

Cabin with balcony that features two balcony chairs, hammock, and a table; single bed; writing desk with an office chair; and a closet.



## Category B Solo

LOUNGE DECK #604-607, 609, 611

Cabin with balcony that features two balcony chairs, hammock, and a table; single bed; writing desk with chair; hammock; and a closet.



# Deck Plans

## Observation Deck



## Bridge Deck

- Category 5
- Category 6
- Category 7



## Lounge Deck

- Category 4
- Category B Solo



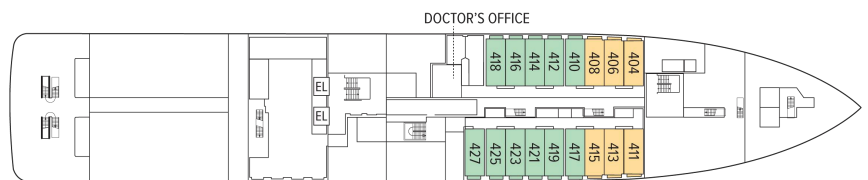
## Main Deck

- Category 3
- Category 2 Solo

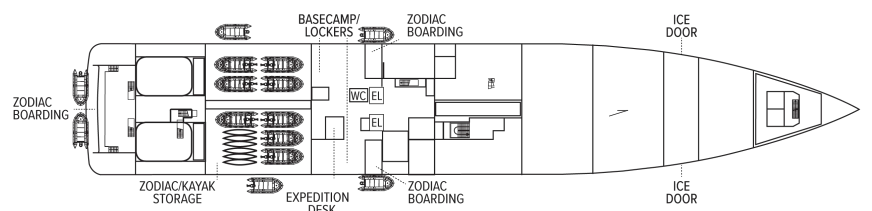


## Fore Deck

- Category 1
- Category 2



## Expedition Deck



# Ship Amenities

## Public Areas

Reception; three dining areas; an observation lounge with bar, gym, wellness area, infinity-style outdoor hot tubs with adjacent igloos; library; main lounge with full service bar, 24-hour beverage station, state-of-the-art tech for films/presentations; OM System photo locker and a photo workshop area; science hub; an onboard broadcast studio; an expedition base with lockers for expedition gear; and open access to the Bridge, Captain, officers and on-duty wildlife spotters.

## Meals

Restaurant 270° features wrap-around views; two other dining areas offer lighter, made-to-order fare or intimate, small group dinners. All feature sustainable choices, local where possible, and unassigned, flexible, inclusive seating.

## Cabins

All cabins face outside with large windows, private bathroom, and climate controls. Cabins are equipped with expedition command centers with iPad tablets, multiple electrical and USB outlets, TVs, with on demand entertainment, phone, Wi-Fi, clock, barometers, hygrometers, vanity mirror, mini refrigerator, small safe, ice bucket, glasses, hair dryer, reading lights and National Geographic Atlas. Luxury linens and pillows. Bathrooms outfitted with Rain showers & hand held shower, botanically inspired shampoo, conditioner, shower gel and lotion. Complimentary insulated water bottles. Balcony cabins have hammocks, chairs and table.

## Expedition Equipment

Zodiac landing craft, kayaks, snowshoes, cross-country skis, an ROV and underwater video camera for unique access to the polar undersea, hydrophone, aerial remote-controlled camera and video microscope.

## Special Features

A full-time doctor, undersea specialist, National Geographic photographer, National Geographic-Lindblad Expeditions certified photo instructor and video chronicler, an internet cafe and laundry. A forward and aft staircase, and elevators, reach all decks. Echoing the pioneering installation aboard *National Geographic Endurance*, artist Zaria Forman has curated a new exhibit featuring a wide range of artists.



## Wellness

A glass-enclosed yoga studio, gym, treatment rooms and spa relax area, and high and low-heat saunas with ocean views, staffed by wellness specialists.

## Self-Disinfecting Ships

ACT Clean Coat™ is a light-activated, self-disinfecting cleaning process that continuously breaks down viruses, bacteria, mold, and airborne allergens across all ship surfaces. Not only does this create a cleaner, healthier shipboard environment for guests and crew alike, but this non-toxic, chemical-free system also saves more than one million gallons of water each year in our cleaning procedures, and reduces our carbon footprint as well as the amount of plastic and waste in our supply chain.



## *National Geographic Explorer*

GUESTS

148

CABINS

81

**Built to handle deep swells and towering waves, the *National Geographic Explorer* lends herself to globe-spanning travel and a dedication to curiosity and wonder.**

Originally constructed for service along Norway's coast as part of the famed Hurtigruten, or Coastal Express, she ferried passengers among the fjords of this iconic coast in conditions that could deteriorate into heavy seas in a matter of minutes. She had to be able to handle deep swells and towering waves—and have a high degree of maneuverability. Those traits, and an ideal size, made her a natural choice for addition to the Lindblad fleet.

The plans to completely rebuild her drew on 50 years of pioneering expedition history and expertise. *National Geographic Explorer* was equipped with an ice-strengthened hull and advanced navigation equipment for polar expeditions; a roster of tools for exploration; and a well-appointed interior with vast expanses of glass for an unprecedented connection to the environment. Her interior and exterior design embodied the Lindblad expedition ethos—the privilege of wildness and the luxury of comfort.

For many guests she remains their paradigm of an expedition ship. She is devoted to exploration—from her Welcoming Bridge, and the Chart Room below it where you can tuck in to warm up with a hot chocolate, to her high-perched Observation deck with its aqueous light and compelling 24/7 views. Even the art on the walls— from the Hurley prints of Shackleton’s expedition to the stunning National Geographic photos— tells an uber- narrative of globe-spanning travel and a dedication to curiosity and wonder.

*National Geographic Explorer* is a state-of-the-art expedition ship. She is a fully stabilized, ice-class vessel, with an ice-reinforced hull, enabling her to navigate polar passages while providing exceptional comfort.

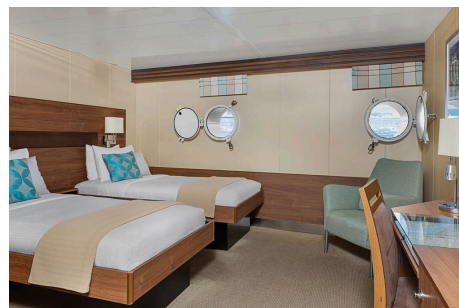


# Cabin Categories

## Category 1

MAIN DECK #301-308

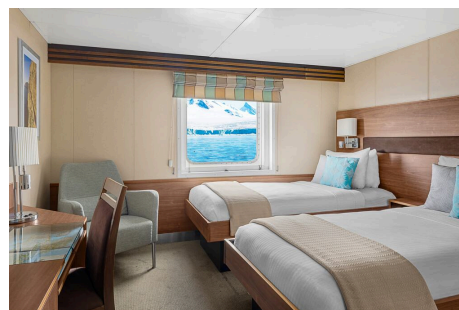
Cabins feature one or two portholes. Most cabins feature two single beds that can be converted to a queen. Cabins #301-306 feature one queen-sized bed. All cabins feature a writing desk, floor length mirror, reading lamps, well-appointed bathrooms with a roomy glass-wall shower, and a TV.



## Category 2

MAIN DECK #317-320, 335-336

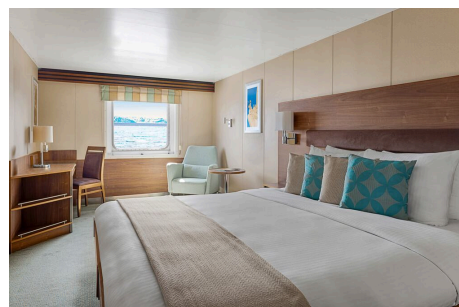
Cabins feature two single beds (some can convert to a queen-sized bed), and one large window. They offer a writing desk, floor length mirror, reading lamps, sitting chair, well-appointed bathrooms with a roomy glass-wall shower, and a TV.



## Category 3

MAIN DECK #313-316, 321-328, 337-340, 342, 344, 348, 350

Cabins feature two single beds (some can convert to a queen-sized bed), one large window, and two sitting chairs and a small table and ample storage. They have a writing desk, floor length mirror, reading lamps, well-appointed bathrooms with a roomy glass-wall shower, and a TV. Cabins 341 & 343 have a sofa bed for a triple.



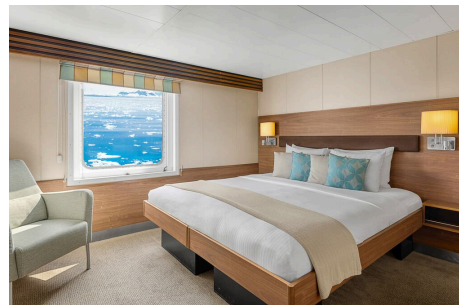
## Category 4

UPPER DECK #201-202, 204-207, 210, 212, 217, 226, 228

Cabins feature two single beds and at least one large window. All cabins can convert between two single beds to a queen, except Cabins 217, 226 and 228, which feature one queen-size bed only. All cabins feature climate controls, sitting chairs and a TV. Bathrooms are also generously sized with a roomy, glass-walled shower stall.

VERANDA DECK #103-104, 107-108

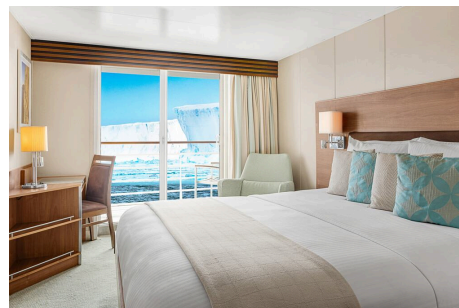
Cabins feature two single beds that can convert into a queen. They have a writing desk, floor length mirror, reading lamps, sitting chair, private bathrooms with a glass-wall shower, and a TV.



## Category 5

UPPER DECK #209, 211, 214, 216, 218, 220-222, 224

Cabins feature a balcony with sliding glass doors, one queen-sized bed, writing desk, floor length mirror, reading lamps, private bathrooms with a glass-wall shower, and a TV. (Cabin 221 has two single beds that can convert to a queen.)



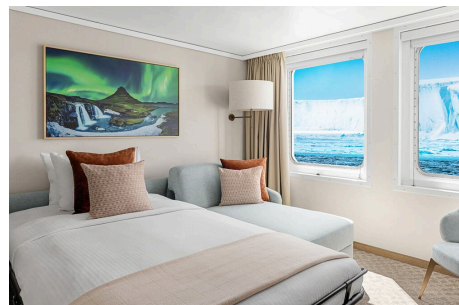
## Category 6

UPPER DECK #213

This spacious cabin has a private balcony, two single beds that can be converted into a queen, a writing desk, double closet, bookcase, pull-out sofa, armchairs, two large windows and a TV. The sleeping area has a glass partition separating the living room. Bathrooms are generously sized with a roomy glass-walled shower stall and twin sinks.

VERANDA DECK #101-102

These spacious cabins can be converted into triples. They have two single beds that can be converted into a queen, a writing desk, double closet, bookcase, sofa-bed, chairs, two large windows and a TV. The sleeping area can be closed off with the glass partition. Bathrooms are generously sized with a roomy glass-walled shower stall and twin sinks.



## Category 7

UPPER DECK #215, 219, 230

These large cabins with private balconies have two single beds that can convert to an Olympic-sized queen. They have seating areas with a sofa-bed and can be converted to triples. Cabins also include a desk with chairs, coffee table with sitting chair, and a small table. Bathrooms are generously sized with a roomy glass-walled shower stall and twin sinks.



## Category A Solo

MAIN DECK #309-311, 329-334

These cabins feature one single bed and a large window, a writing desk, reading lamp, bathroom with a roomy glass-wall shower stall, and a TV.



## Category B Solo

UPPER DECK #203, 208

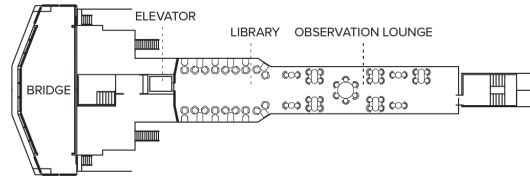
VERANDA DECK #105-106

These cabins feature one single bed and a large window, a writing desk, reading lamp, bathroom with a roomy glass-wall shower stall, and a TV.

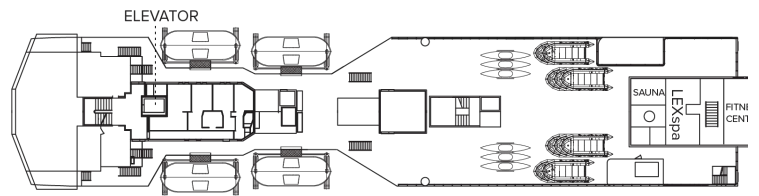


# Deck Plans

## Bridge Deck



## Wellness Deck



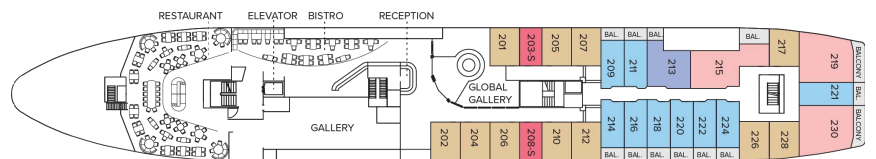
## Veranda Deck

- Category 4
- Category 6
- Category B Solo



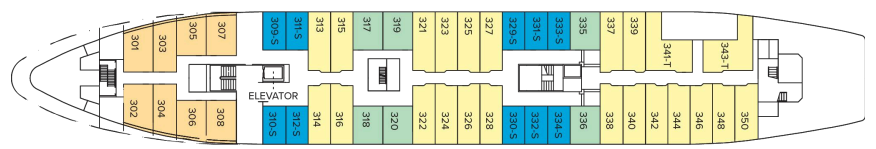
## Upper Deck

- Category 4
- Category 5
- Category 6
- Category 7
- Category B Solo

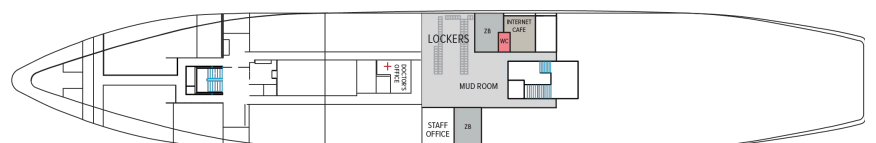


## Main Deck

- Category 1
- Category 2
- Category 3
- Category 2 Solo



## B Deck



# Ship Amenities

## Public Areas

Reception; three dining areas; global gallery; library, OM System photo locker; 24-hour Bistro area beverage bar; lounge with bar and state-of-the-art presentation facilities; observation lounge; mudroom with lockers for expedition gear; plus open access to the Bridge, the Captain, officers and on-duty wildlife spotters.

## Meals

Meals are served in the dining room, Bistro bar or the Observation lounge, at a single seating with unassigned tables for an informal atmosphere and easy mingling. Menus feature sustainable choices, local where possible.

## Cabins

81 outside cabins. All cabins face outside with windows or portholes, private bathroom and climate controls. Cabins are equipped with Wi-Fi, multiple electrical outlets, USB outlets, full length mirror and phones. TV featuring entertainment on demand, live feed for onboard presentations, bow camera and ship's position. Luxury bed linens and pillows. Botanically inspired shampoo, conditioner, shower gel and lotion are all available in cabin bathrooms, as well as an Expedition Essential Kit. Hair dryers, complimentary insulated water bottles and a National Geographic Atlas are available in each cabin.

## Expedition Equipment

Zodiac landing craft, a fleet of double kayaks, a crow's nest camera, a hydrophone, underwater video cameras, video microscope and an ROV. Plus, for South Pacific voyages: snorkeling gear for all guests, scuba gear for a number of pre-qualified guests, stand-up paddleboards, glass-bottom Zodiac and splash-cam.

## Special Features

A full-time doctor, undersea specialist, National Geographic photographer and National Geographic-Lindblad Expeditions certified photo instructor, internet café and laundry. Enjoy a session in the topside library with a good book.



## Wellness

A glass-enclosed fitness center, outdoor stretching area, a LEXspa treatment room and sauna, staffed by wellness specialists.

## Self-Disinfecting Ships

ACT Clean Coat™ is a light-activated, self-disinfecting cleaning process that continuously breaks down viruses, bacteria, mold, and airborne allergens across all ship surfaces. Not only does this create a cleaner, healthier shipboard environment for guests and crew alike, but this non-toxic, chemical-free system also saves more than one million gallons of water each year in our cleaning procedures, and reduces our carbon footprint as well as the amount of plastic and waste in our supply chain.

# Special Offers

## COMBINING OFFERS

Certain offers may be combinable, up to two savings opportunities, except where noted otherwise.

For example, travel with a group of 8 or more on back-to-back expeditions, and take advantage of both savings.

---

## 10% OFF BACK-TO-BACK VOYAGES

Save 10% on consecutive departures, applicable on voyage fares only and not valid on extensions or airfare. Valid for new bookings only, subject to availability, and may not be combined with other offers. Call for details.

---

## CELEBRATE LIFE'S MILESTONES

Celebrate a milestone with a group of eight or more and enjoy a special amenity package including: 5% savings on voyage fares, custom group photo, US\$150 shipboard credit for the group, and other special gifts. Milestone celebration to be communicated at time of booking.

---

## SAVE 5% TRAVELING AS A GROUP

Save 5% when traveling as a group of 8 or more people. Valid for new bookings only on select departures, subject to availability, not applicable on extensions, and may not be combined with other offers. Call for details.

## INCLUDED IN PRICE

All accommodations aboard ship or in hotels per itinerary; all meals as indicated in the itinerary, both aboard and onshore; beer, wine, cocktails, and spirits aboard the ship (except certain super premium brands which are available for purchase); hors d'oeuvres, 24-hour access to snacks, premium coffees and teas, non-alcoholic beverages, and filtered water; excursions and airport transfers to and from recommended flights, as indicated in the itinerary; crew gratuities; exploration tools curated to destination, such as Zodiacs, kayaks, guidance and company of our leading expedition staff; assistance by the National Geographic Photography Expert and Lindblad Expeditions-National Geographic certified photo instructor; access to the OM System Photo Gear Locker; presentations by expedition staff and expert guest speakers; complimentary parka or jacket, complimentary reusable water bottle; services of a medical professional; morning stretch classes and 24-hour access to exercise equipment; 24-hour access to lounges, observation decks, library, and other shared spaces; park and site entrance fees, special access permits, and port taxes. Unused services or items included in our programs are non-refundable.

## NOT INCLUDED IN PRICE

Airfare (except flights when indicated as included); pre- and post-expedition extensions; additional hotel nights (except when indicated as included); private transfers; laundry, spa treatments, Wi-Fi, and phone services (except when indicated as included); travel protection plans; and passport, visa, and immigration fees.

## TRAVEL PROTECTION PLAN

We strongly recommend our guests to take advantage of

our Travel Protection Plan. This plan offers comprehensive coverage to protect you from cancellation fees, costs incurred due to trip delays/interruption, damage or loss of baggage, medical assistance, and evacuation during your travels. Our Travel Protection Plan is available for U.S. residents only, and may be purchased any time prior to final payment due date, Travel Protection premiums are non-refundable once plan is purchased. Learn more about our Travel Protection "Plus" Plan: <https://www.expeditions.com/terms-conditions/travel-protection-plan/>

## CANCELLATION POLICY

Review our cancellation policy: <https://www.expeditions.com/cancellation-policy/>