








# Holland and Belgium: Medieval History and Scenic Waterways

Journey along the Rhine and other picturesque waterways of Holland and Belgium, where centuries of rich culture, art and history come to life amidst vibrant flower vistas, iconic windmills and fairytale towns. Travel down Amsterdam's scenic canals, call on historic cities such as Antwerp and Delft, and take in the serene Dutch countryside while delving into the region's defining artistic legacy, deep-rooted Jewish history and culinary delights. This captivating voyage sails aboard the newly chartered 120-guest *Connect*, a luxurious vessel rooted in sustainable design—from thoughtfully sourced build materials and green technology that minimizes food waste to environmentally friendly bath and bedding products in every spacious stateroom.

From

**\$ 6,450** / per person

**Does not include flights**

 <b>DATES</b> Apr and Aug	 <b>DURATION</b> 8 or 9 Days
 <b>SHIPS</b> <i>Connect</i>	
 <b>STARTS AT</b> Amsterdam, Netherlands	→  <b>ENDS AT</b> Brussels, Belgium

Minimum Age Requirement: Any children booked on *Connect* voyages must be at least 1 year old at time of embarkation.

# Highlights

- ★ Stroll through more than 7 million tulips, daffodils and hyacinths at Keukenhof, known as the “Garden of Europe” (spring departures), or marvel at the Brussels Flower Carpet: 2,000 square meters of flowers meticulously arranged to create a work of art on the city’s iconic Grand-Place (summer departures)
- ★ Witness the works of masters like Van Gogh, Rembrandt, Rubens, Vermeer and more with exclusive, after-hours tours at the Kröller-Müller and Mauritshuis Museums
- ★ Tour WWII monuments that reveal Amsterdam’s rich Jewish heritage where you’ll meet Holocaust survivors or family members of survivors
- ★ Indulge in incredible culinary experiences throughout your voyage, from a progressive food tour of Belgian specialties in Antwerp to curated dinners on board featuring local flavors





# Day by day

## ■ DAY 1

### Amsterdam, The Netherlands

Arrive in Amsterdam and embark *Connect*. After settling into your stateroom explore this historic city on your own, stay onboard and relax with a drink on the top deck, enjoy local music by the resident pianist in the Lounge or indulge in a rejuvenating spa treatment. Choose to arrive early for an optional two-day pre-voyage extension to explore Amsterdam and its neighboring countryside.

Meals included: dinner

## ◇ DAY 2

### Amsterdam

Visit historic Alkmaar, a city famous for its cheese, where you'll explore the old town, with its well-preserved architecture and canal system. Alternatively, choose a guided walking tour through Amsterdam's most iconic neighborhoods, historic landmarks and hidden gems before taking a scenic canal cruise through the historic waterways of the Dutch capital city. Learn about Amsterdam's unique relationship with water and its iconic canal system, a UNESCO World Heritage Site.

This afternoon, delve deeply into the city's Jewish history and culture on a tour where you'll meet family members of Holocaust survivors or survivors themselves. Visit the Holocaust Museum, Hollandsche Schouwburg—a theater-turned-museum with a poignant WWII history—and the Jewish Historical Museum for a profound exploration of resilience and heritage. Also, see the Portuguese Synagogue.

Cast off this evening with a welcome reception and dinner followed by a musical performance on

board.

Meals included: breakfast, lunch, dinner

## ◇ DAY 3

### Kampen / Giethoorn

Giethoorn, often referred to as the "Venice of the Netherlands," is renowned for its serene canals, charming thatched-roof cottages and picturesque wooden bridges. Uncover the village's rich history, dating back to the 13th century while cruising its narrow waterways. Alternatively, enjoy the scenic beauty of the countryside near Kampen on a guided bicycle tour before indulging in a Dutch cheese presentation aboard the ship. This evening, enjoy an authentic Dutch dinner featuring fresh, locally sourced mussels and oysters. During the meal, a local chef will come aboard to reveal insights on the region's traditions and flavors, making for an unforgettable culinary experience.

Meals included: breakfast, lunch, dinner

## ◇ DAY 4

### Arnhem

Explore Arnhem's rich history with visits to landmarks such as the John Frost Bridge, a pivotal site during the 1944 Battle of Arnhem, and the Old City Hall located in Market Square. Alternatively, discover Het Loo Palace, a former royal residence that offers a glimpse into the grandeur of Dutch monarchy. Stroll through the opulent gardens, admire the baroque architecture and uncover the legacy of the royal family.

After an afternoon spent at your leisure in Arnhem exploring the Airborne Museum or wandering through the picturesque old town, enjoy a private, after-hours tour of the renowned Kröller-Müller

Museum. Nestled in De Hoge Veluwe National Park, the museum boasts an exceptional collection of modern art, including masterpieces by Van Gogh and Rembrandt, plus a breathtaking sculpture garden. Conclude your visit with an exclusive reception, offering an unforgettable finish to the day.

Meals included: breakfast, lunch, dinner

◇ DAY 5

### Rotterdam / The Hague or Delft / Kinderdijk

Arrive in Rotterdam this morning with options to explore the city. Visit The Hague, the political heart of the Netherlands and home to the esteemed International Court of Justice. Enjoy a private visit to the Mauritshuis Museum before it opens, where you'll have the rare opportunity to admire masterpieces such as Vermeer's *Girl with a Pearl Earring* in a crowd-free setting. Alternatively, immerse yourself in the city of Delft, renowned for its iconic blue pottery and royal connections. Visit the Royal Delft factory, the last remaining producer of the famous Delftware, and wander through the town's storied streets.

This afternoon, journey to the UNESCO-listed Kinderdijk to witness its iconic windmills and learn about the Netherlands' groundbreaking water management systems.

Meals included: breakfast, lunch, dinner

◇ DAY 6

### Antwerp, Belgium

Start your day in Antwerp with a visit to the Royal Museum of Fine Arts, home to an impressive collection of Flemish Baroque and contemporary masterpieces. Alternatively, delve into the city's Jewish heritage, which dates back to the 16th century when Sephardic Jews fled the Spanish Inquisition, as your guide shares fascinating insights

into the community's growth and contributions during Antwerp's economic golden age. This afternoon, indulge in a progressive food tour, sampling Belgian fries, waffles and chocolate at some of the city's finest eateries and capping it off with a Belgium beer tasting led by a knowledgeable beer sommelier.

Meals included: breakfast, lunch, dinner

◇ DAY 7

### Brussels

Kick off your day in Brussels with a guided city tour. Start in the European District, visit iconic landmarks and hidden gems like the European Parliament and the Berlaymont Building, pass by the Atomium—a breathtaking modernist structure built for the 1958 World Expo and designed to resemble an iron crystal magnified 165 billion times—before ending at the Church of Saint Jacques-sur-Coudenberg.

Step into a masterpiece where nature meets imagination as you experience Brussels' Flower Carpet. Every two years, the UNESCO-listed Grand-Place transforms into an awe-inspiring tapestry of nearly a million begonias or dahlias. Covering 2,000 square meters with intricate designs inspired by global traditions, this living artwork first created in 1971, celebrates Belgian creativity and is now recognized as part of Brussels' cultural heritage.

Spend the rest of the afternoon exploring this storied city on your own before returning to the ship for a celebratory farewell cocktail party and dinner.

Meals included: breakfast, lunch, dinner

■ DAY 8

### Brussels

Following breakfast, disembark in Brussels. Opt to spend more time in Belgium on an optional

two-day post-voyage extension exploring Ghent  
and Bruges.

Meals included: breakfast

## Upstream (Summer)

Amsterdam, Netherlands → Brussels, Belgium

## Alternative Routes

Visit [Expeditions.com](http://Expeditions.com) for more information.

### 2026 Departure Dates

---

15 Aug

---

### 2027 Departure Dates

---

11 Apr, 18 Apr, 25 Apr

---



## Connect

GUESTS

126

CABINS

60

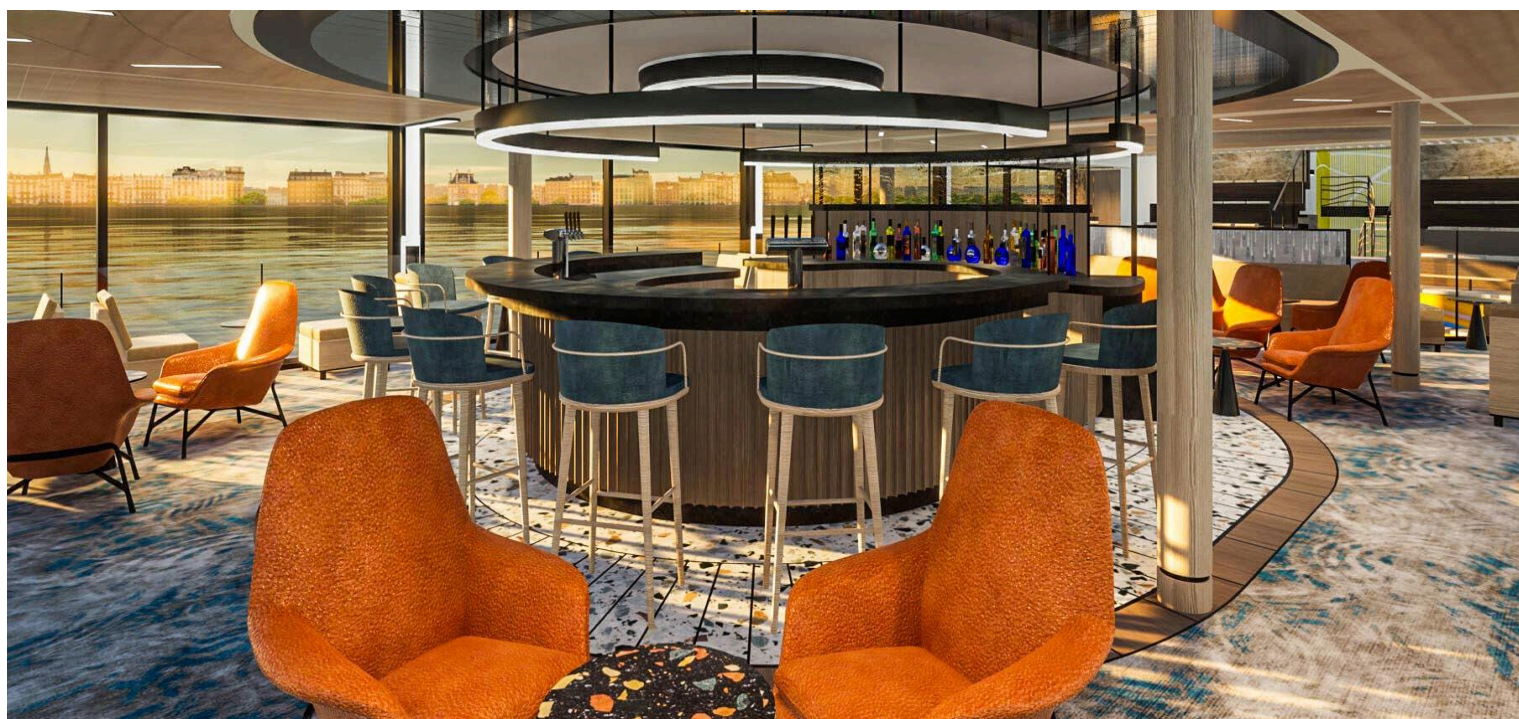
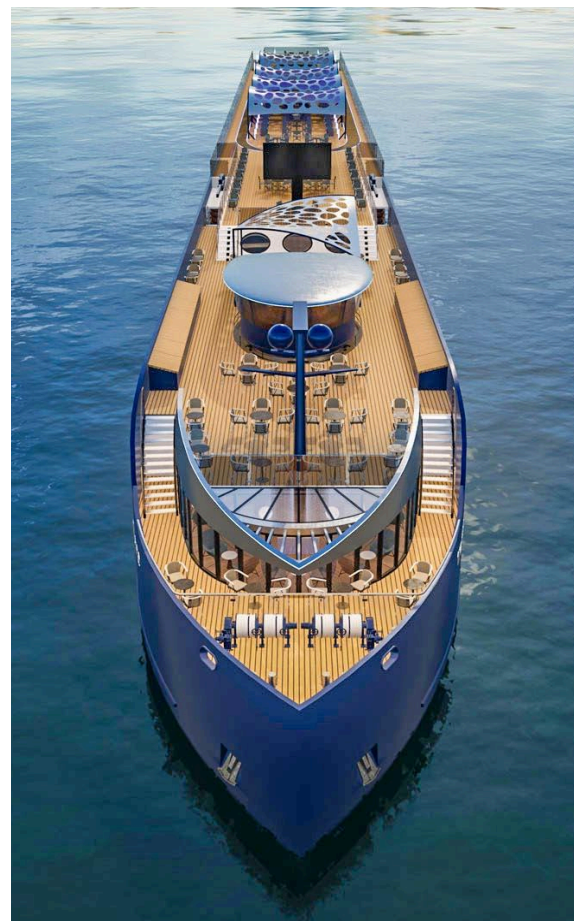
### Discover Europe aboard an expertly crafted river ship rooted in sustainable design

Constructed in 2025, *Connect* is a brand-new, state-of-the-art European river ship joining our growing collection of bespoke charter vessels next year. With cutting-edge technology, luxurious amenities and wrap-around picture windows, this sleek 120-guest ship is uniquely designed to sail through the heart of storied destinations in Germany, France, The Netherlands and beyond. Sustainability and regional connection are at her core, creating a refined and meaningful experience that elevates every journey.

Setting sail in 2026, *Connect* features sixty 210 square-foot elegant and spacious staterooms (convertible to 420 square-foot suites), each one well-appointed with two large wardrobe closets, smart glass spa shower and full-width floor-to-ceiling windows to take in the charming riverside towns and pastoral landscapes.

With an array of dynamic public venues, there is plenty of space to relax, dine, mingle with your fellow travelers, and connect more deeply with your destination through expert presentations and onboard experiences like wine tastings and musical performances. This contemporary river ship includes an expansive wellness area, the Forum (which is a two-story amphitheater), a restaurant and bistro, as well as a lively lounge with a well-stocked bar.

Every detail is thoughtfully designed—from carefully sourced build materials and green technology that minimizes food waste to environmentally friendly bath and bedding products.



# Cabin Categories

## Category C1

MAIN DECK #217-220, 225-231

These 210-square-foot cabins located at the back of the Main Deck feature floor-to-ceiling windows, sash window balcony and quiet sleep sound cancellation system. The cabins each have a European king bed or two twin beds (configured upon request), a 55-inch smart TV, desk and chair, minibar, individual climate control and two wardrobes.



## Category C2

MAIN DECK #202, 204, 209-216

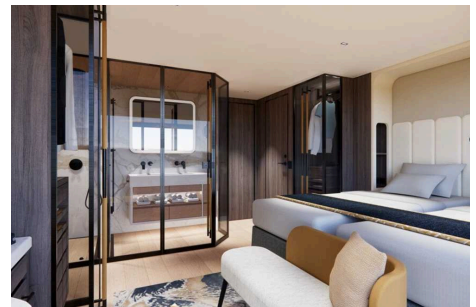
These 210-square-foot cabins located at the front of the Main Deck feature floor-to-ceiling windows, sash window balcony and quiet sleep sound cancellation system. The cabins each have a European king bed or two twin beds (configured upon request), a 55-inch smart TV, desk and chair, minibar, individual climate control and two wardrobes. Two category C2 cabins can be combined into a category S2 Suite.



## Category F1

MAIN DECK #F221, F222

These 420-square-foot two-bedroom family suites are located at the back of the Main Deck. Each bedroom features floor-to-ceiling windows, sash window balconies and quiet sleep sound cancellation system. Each cabin has a European king bed or two twin beds (configured upon request), 55-inch smart TV, desk and chair, minibar, individual climate control and ample storage including four wardrobes.



## Category S2

MAIN DECK #S201, S205, S206

These one-bedroom suites are located at the front of the Main Deck and offer 420 square feet of space, including a separate sitting room. feature floor-to-ceiling windows, sash window balconies and quiet sleep sound cancellation system. The bedroom features a European king bed or two twin beds (configured upon request), 55-inch smart TV, desk and chair, minibar, individual climate control and ample storage including four wardrobes.



## Category C3

UPPER DECK #318, 320, 325-331

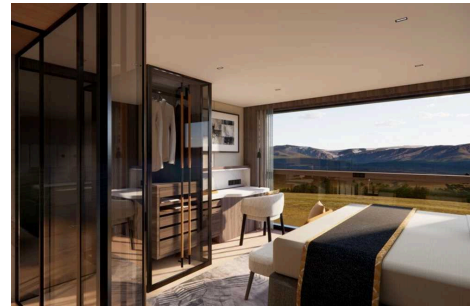
These 210-square-foot cabins located at the back of the Upper Deck feature floor-to-ceiling windows, sash window balcony and quiet sleep sound cancellation system. The cabins each have a European king bed or two twin beds (configured upon request), a 55-inch smart TV, desk and chair, minibar, individual climate control and ample storage including two wardrobes. Two category C3 cabins can be combined into a category S3 Suite.



## Category C4

UPPER DECK #302, 304, 309-316

These 210-square-foot cabins located at the front of the Upper Deck feature floor-to-ceiling windows, sash window balcony and quiet sleep sound cancellation system. The cabins each have a European king bed or two twin beds (configured upon request), a 55-inch smart TV, desk and chair, minibar, individual climate control and ample storage including two wardrobes. Two category C4 cabins can be combined into a category S4 Suite.



## Category S3

UPPER DECK #S317, S321, S322

These one-bedroom suites are located at the back of the Upper Deck and offer 420 square feet of space, including a separate sitting room. Large floor-to-ceiling windows and sash window balconies create a seamless indoor-outdoor connection. The bedroom includes a European king bed or two twin beds (configured upon request), 55-inch smart TV, desk and chair, minibar, individual climate control and ample storage including four wardrobes.



## Category S4

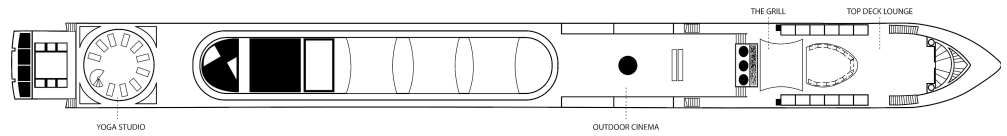
UPPER DECK #S301, S305, S306

These one-bedroom suites are located at the front of the Upper Deck and provide 420 square feet of space, including a separate sitting room. Large floor-to-ceiling windows and sash window balconies create a seamless indoor-outdoor connection. The bedroom includes a European king bed or two twin beds (configured upon request), 55-inch smart TV, desk and chair, minibar, individual climate control and ample storage including four wardrobes.



# Deck Plans

## Sun Deck



## Upper Deck

- Category C3
- Category C4
- Category S3
- Category S4



## Main Deck

- Category C1
- Category C2
- Category F1
- Category S2



# Ship Amenities

## Tools for Exploration

A fleet of bikes is available for those who want to enjoy some independent exploration, riding along the canals of Amsterdam or through the French countryside.

## Public Spaces

An expansive top deck houses fitness zones, a lounge area and a grill and bar. From dinners to cocktail hours to movie nights, memorable al fresco events will cap off busy days spent exploring ashore.

## In Good Company

Explore in the company of veteran Lindblad Expeditions-National Geographic expedition staff, a veteran Expedition Leader, Certified Photo Instructor, as well as Historian, Cultural, Photo and Destination Experts.



## Special Offers

### SAVE 5% TRAVELING AS A GROUP

Save 5% when traveling as a group of 8 or more people. Valid for new bookings only on select departures, subject to availability, not applicable on extensions, and may not be combined with other offers. Call for details.

---

### COMBINING OFFERS

Certain offers may be combinable, up to two savings opportunities, except where noted otherwise.

For example, travel with a group of 8 or more on back-to-back expeditions, and take advantage of both savings.

---

### CELEBRATE LIFE'S MILESTONES

Celebrate a milestone with a group of eight or more and enjoy a special amenity package including: 5% savings on voyage fares, custom group photo, US\$150 shipboard credit for the group, and other special gifts. Milestone celebration to be communicated at time of booking.

---

### 10% OFF BACK-TO-BACK VOYAGES

Save 10% on consecutive departures, applicable on voyage fares only and not valid on extensions or airfare. Valid for new bookings only, subject to availability, and may not be combined with other offers. Call for details.

## INCLUDED IN PRICE

All accommodations aboard ship per itinerary; all meals as indicated in the itinerary, both aboard and onshore; beer and wine aboard the ship; hors d'oeuvres, 24-hour access to snacks, premium coffees and teas, non-alcoholic beverages, drinking water; excursions as indicated in the itinerary; crew gratuities; bicycles and e-bikes; guidance and company of our leading expedition staff; assistance of the Lindblad Expeditions-National Geographic certified photo instructor; presentations by expedition staff and expert guest speakers; Wi-Fi; complimentary reusable water bottle; 24-hour access to lounges, observation decks, library, and other shared spaces; park and site entrance fees, special access permits, and port taxes. Unused services or items included in our programs are non-refundable.

## NOT INCLUDED IN PRICE

Airfare (except flights when indicated as included); pre- and post-expedition extensions; additional hotel nights (except when indicated as included); services of an onboard physician; transfers; laundry, spa and phone services (except when indicated as included); travel protection plans; and passport, visa, and immigration fees.

## TRAVEL PROTECTION PLAN

We strongly recommend our guests to take advantage of our Travel Protection Plan. This plan offers comprehensive coverage to protect you from cancellation fees, costs incurred due to trip delays/interruption, damage or loss of baggage, medical assistance, and evacuation during your travels. Our Travel Protection Plan is available for U.S. residents only, and may be purchased any time prior to final payment due date, Travel Protection premiums are

non-refundable once plan is purchased. Learn more about our Travel Protection "Plus" Plan: <https://www.expeditions.com/terms-conditions/travel-protection-plan/>

## CANCELLATION POLICY

Review our cancellation policy: <https://www.expeditions.com/cancellation-policy/>