



## Indonesia's Coral Gardens and Komodo Dragons Aboard Aqua Blu

Discover remote Indonesian islands on a voyage that stretches nearly 2,000 miles, from the untamed realm of the world's largest lizard—the Komodo dragon—to the azure expanse of the Spice Islands and the enchanting Banda Sea. With the state-of-the-art *Aqua Blu* as your home base, dive or snorkel through waters teeming with life and color, engage with local communities to learn about their time-honored traditions and actively explore the natural beauty of one of the world's most spectacular archipelagos.

From  
**\$ 23,370** / per person  
Does not include flights

 <b>DATES</b> Oct	 <b>DURATION</b> 15 Days
 <b>SHIPS</b> <i>Aqua Blu</i>	
 <b>STARTS AT</b> Denpasar, Bali, Indonesia	→  <b>ENDS AT</b> Denpasar, Bali, Indonesia

**Note:** Diving is offered on voyages aboard *Aqua Blu* at no extra cost. This option is limited to 10 experienced certified divers on a first-come-first-served basis. Non-divers can enjoy a range of other water activities, including snorkeling, swimming and kayaking. Call an Expedition Specialist for details.

## Highlights

- ★ Island hop through Indonesia in comfort and style aboard the Aqua Blu, an intimate vessel with just 14 cabins
- ★ Snorkel and dive the Coral Triangle's marine paradise, where dazzling schools of reef fish, countless coral gardens and megafauna like hammerhead sharks and rays thrive







## Day by day

### ■ DAY 1

#### Denpasar, Bali, Indonesia / Nusa Dua

Arrive in Bali, one of the cultural hubs of Indonesia, and transfer to the Hilton Bali Resort (or similar). Enjoy the hotel facilities and restaurants before your adventure.

### ◇ DAY 2

#### Bali / Labuan Bajo, Flores / Embark Ship

Travel by air from Bali to Labuan Bajo on our recommended flight\*; transfers to the airport and luggage assistance will be provided. Embark *Aqua Blu* in the afternoon and settle into your cabin before a welcome reception and dinner on board.

*\*If you are not purchasing the recommended flight, please get in touch to confirm your arrangements.*

Meals included: breakfast, lunch, dinner

### ◇ DAY 3

#### Komodo / At Sea

Enjoy breakfast with views of Komodo Bay's contrasting landscapes: dramatic peaks set against turquoise waters. Venture into Komodo National Park, a UNESCO World Heritage Site, in search of the legendary Komodo dragon, the world's largest living lizard. Embark on a hike accompanied by experienced park rangers to observe these ancient creatures in their natural habitat and gain insights into ongoing conservation initiatives. Capture images of these fascinating reptiles with the help of your National Geographic certified photo instructor. In the afternoon, set sail for Taka Bonerate National Park. Along the way, attend engaging talks with onboard experts, delving into the extraordinary wildlife, ecosystems and geology that will shape

your journey.

Meals included: breakfast, lunch, dinner

### ◇ DAY 4

#### Taka Bonerate National Park

Taka Bonerate—loosely translated from the Bugis language as “coral piled on sand”—is a UNESCO Biosphere Reserve and national park that is home to the third largest atoll in the world. Immerse yourself in a day of exploration beneath crystal-clear waters in an untouched realm teeming with life. Start the morning with a swim or set out on a kayak excursion. As you snorkel and dive, you may encounter playful dolphins, intricate gorgonian fans, black corals and an array of other marine creatures, including tuna, napoleon wrasse, scorpionfish and more.

Meals included: breakfast, lunch, dinner

### ◇ DAY 5

#### At Sea / Maumere, Flores

Spend the morning enjoying the amenities aboard *Aqua Blu*, unwinding with a book, savoring a quiet moment by the sea or refining your photography skills with guidance from your National Geographic certified photo instructor. Arrive at Watublapi village, renowned for producing some of the world's most exquisite ikat weavings. Watch as master weavers continue the time-honored tradition of crafting designs using handspun cotton yarn and vibrant natural dyes derived from local plants. During your visit, you'll also experience a traditional dance performance that captures the spirit of their culture.

Meals included: breakfast, lunch, dinner

### ◇ DAY 6

## Pantar Strait Marine Park

The morning calls for snorkel and dive excursions in the dazzling waters of Pantar Strait Marine Park, one of Indonesia's most stunning aquatic areas thanks to the confluence of cold currents from Australia and warm Indonesian seas that foster an abundance of marine life. This afternoon, step ashore on Alor Island into the rich cultural tapestry of the Abui tribe. Experience their centuries-old traditions firsthand as the community welcomes you with their lego-lego dance, a rhythmic expression of unity and heritage. You'll also watch a demonstration of their bow-and-arrow skills, offering a glimpse into their ancestral way of life that continues to thrive in this remote corner of the world.

**Meals included:** breakfast, lunch, dinner

### ◇ DAY 7

## Pulau Wetar

The rugged, untouched coastline of Wetar island beckons with a wealth of hidden treasures, waiting to be discovered. Beneath the surface, impressive wall dives reveal a thriving underwater world where you may encounter graceful sharks gliding through the depths, schools of shimmering pelagic fish and vivid cup corals. Whether you're diving or snorkeling, keep your eyes peeled for majestic manta and mobula rays, a highlight of this remote and rarely explored marine paradise.

**Meals included:** breakfast, lunch, dinner

### ◇ DAY 8

## Kepulauan Barat Daya

Nestled within the fabled "Wallacea" region, the Barat Daya islands are an archipelago—or "kepulauan" in Indonesian— isolated by deep oceanic straits from the Australian and Asian continental shelves. Plunge into the crystalline waters surrounding Pulau Nyata, where elusive hammerhead sharks and graceful rays glide through

vibrant coral reefs. Continue south to Telang for more thrilling snorkeling and kayaking adventures, keeping an eye out for the rare silver-tip shark.

**Meals included:** breakfast, lunch, dinner

### ◇ DAY 9

## Nil Desperandum

Nil Desperandum—meaning "do not despair" in Latin—is a small, secluded atoll in the Banda Sea known for its hard coral formations and deep drop offs. Spend the day diving or snorkeling among thriving coral and sponge gardens whose highlight includes a vibrant tapestry of brain and staghorn corals perfect for underwater photography enthusiasts. In these clear waters, you'll also be captivated by schools of formidable fish, including tuna and Spanish mackerel.

**Meals included:** breakfast, lunch, dinner

### ◇ DAY 10

## Pulau Serua

Serua, like many destinations on this voyage, lies within Indonesia's remote "Forgotten Islands," a scattered chain stretching hundreds of miles from Timor to Papua. Formed by millennia of volcanic eruptions, Serua is a towering stratovolcano that rises thousands of feet above the Banda Sea floor. Set out on an early morning kayaking excursion, then snorkel and dive to discover stunning reefs, dramatic walls and soft coral gardens. Marvel at schools of fish swiftly darting among the corals and watch for the hammerhead sharks known to congregate in larger numbers here. This afternoon, head out on a steep hike to visit a local village, immersing yourself in the culture and traditions of the people who call this volcanic island home.

**Meals included:** breakfast, lunch, dinner

### ◇ DAY 11

## Pulau Manuk

Begin your day with a sunrise breakfast aboard *Aqua Blu*, set against the dramatic silhouette of Pulau Manuk's towering cliffs—a volcanic island that rises three kilometers from the ocean floor. Uninhabited by humans, this isle provides a haven for nature's predators: fish-eating birds dive with precision into its pristine waters, and sea snakes and reef sharks gather at its underwater thermal springs. Be on the lookout for frigatebirds, gannets and other seabirds that nest in Manuk's verdant treetops. Enjoy swimming or kayaking in the ocean before taking part in a cooking demonstration aboard the ship.

Meals included: breakfast, lunch, dinner

## ◇ DAY 12

### Banda Neira

Arrive at the Banda Islands at sunrise, welcomed by traditional Kora-Kora war canoes gliding through the harbor. Step ashore on Banda Neira, once the world's most fiercely contested island between the British and Dutch during the spice trade of the 16th and 17th centuries. Wander through the remnants of history at Dutch Fort Nassau, a military stronghold that now symbolizes the island's tumultuous past as the global epicenter of nutmeg production—a prized and lucrative spice traded across Europe and Asia. Spend the morning walking through its ancient passageways that tell of a complex bygone era. After lunch, don your snorkel or dive gear and explore the marine life of this storied archipelago. Later on, toast the day with a sundowner and panoramic views of Banda Neira at Fort Belgica.

Meals included: breakfast, lunch, dinner

## ◇ DAY 13

### Pulau Ai / Pulau Run

At Pulau Ai, one of the westernmost gems of the Banda Islands, immerse yourself in crystalline waters as you swim, snorkel or dive among coral gardens full of reef fish. Afterward, step ashore for a guided tour of Ai where you'll learn about the island's

storied past and visit its historic nutmeg storehouses, once vital to the lucrative spice trade. Be sure to keep your camera handy as you explore with your National Geographic certified photo instructor by your side. This afternoon, journey to the shores of Pulau Run, an idyllic island that was a center for nutmeg trade in the 17th century and was famously traded for Manhattan in 1667 by the British and Dutch. In the evening, enjoy a cocktail party on these historic sands, watching the sun sink gracefully into the sea.

Meals included: breakfast, lunch, dinner

## ◇ DAY 14

### Pulau Nusa Laut / At Sea

Begin your day with an early morning swim in tranquil ocean waters, followed by snorkeling, diving or kayaking excursions. On the northern shores of Nusa Laut, explore the picturesque fishing villages of Ameth and Akon, where time seems to slow amidst the island's serene beauty. With luck, you'll spot the elusive dugong, the Southeast Asian cousin of the gentle American manatee, in its natural environment. As your journey continues toward Ambon, take part in a cooking lesson that brings the flavors of the Spice Islands to life. Enhance your day with insightful onboard presentations from your naturalist guides, deepening your connection to the landscapes, cultures and wildlife you've encountered along the way.

Meals included: breakfast, lunch, dinner

## ■ DAY 15

### Ambon, Maluku / Disembark Ship / Denpasar, Bali

Disembark in Ambon after breakfast and transfer to the airport to fly to Bali on our recommended flight\*; transfers to the airport and luggage assistance will be provided. Upon arrival, connect to your flight home.

*\*If you are not purchasing the recommended group flight, please get in touch to confirm your arrangements.*

**Meals included: breakfast**

### Expedition

Denpasar, Bali, Indonesia → Denpasar, Bali,  
Indonesia

### 2026 Departure Dates

Aboard *Aqua Blu*

26 Oct		
--------	--	--





## ***Aqua Blu***

---

Guests

28

Cabins

14

---

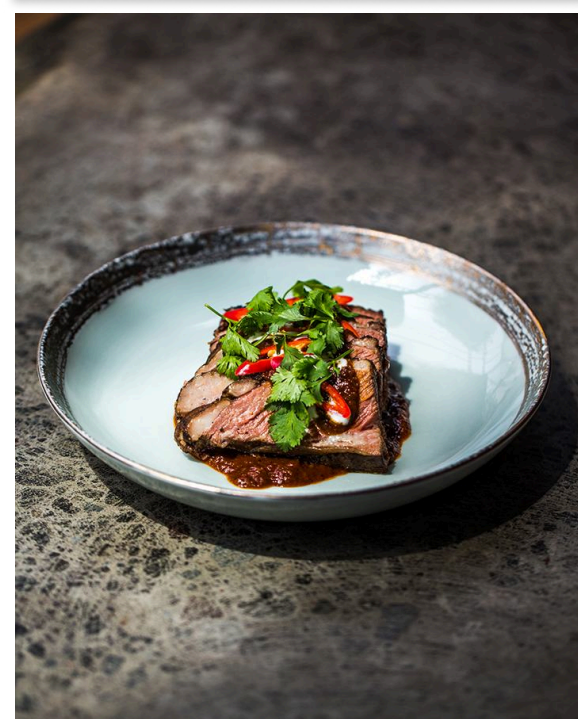
### **A one-of-a-kind explorer yacht fully equipped for undersea and on-shore adventures**

Just under 200 feet long and featuring 14 individually designed suites, the Aqua Blu offers an intimate environment that reflects its history as a former British naval explorer and a private yacht for a European aristocratic family. A 2019 refurbishment by renowned Dutch yacht designer Cor D. Rover brought this refined vessel up to world-class cruising specifications, blending modern luxury with ultimate comfort and safety.



Exceptional amenities, including an outdoor workout area and hot tub, a stylish lounge bar and a tranquil spa featuring Balinese massage and aromatherapy, elevate and enhance your time exploring this wild and stunningly beautiful region.

Enjoy an innovative menu curated by renowned chef Benjamin Cross, which draws inspiration from Indonesia's fabled spice trade route as well as European and Mediterranean cuisines.



# Cabin Categories

## Category 1

Lower Deck: #102-103

These cozy 146-square-foot cabins feature two twin beds. They each have two porthole windows and a compact bathroom. Amenities include a hair dryer, safe, beach bag, bathrobe and slippers.



## Category 2

Main Deck: #201, 203; Forecastle Deck: #301; Bridge Deck: #401

At an average of 259 square feet, these bright cabins feature a king-size bed and ample storage space—plenty of room for two. Select cabins have a sofa in addition to an armchair. Bathroom sizes vary across category 2 cabins; all optimize space for maximum comfort. Amenities include a hair dryer, safe, beach bag, tea/coffee facilities, bathrobe and slippers. Details about individual cabins can be found in the deck plan.



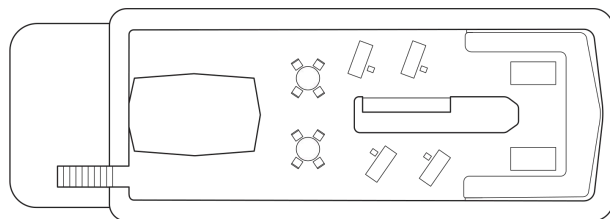
## Category 3

Lower Deck: #101, 104, 105; Main Deck: #202, 204;  
Forecastle Deck: #302, 303; Bridge Deck: #402

These light-filled cabins range from 269 to 363 square feet, averaging 317 square feet. They feature a king-size bed or two twin beds which can be configured as a king-size bed upon request. Most feature a sofa, armchair, coffee table, desk and ample storage and cupboard space. Depending on their deck location, these cabins have either portholes or large windows. The more spacious category 3 cabins offer a separate seating area and walk-in closet. Bathroom sizes vary, although the majority are large, and one has a soaking tub in addition to a shower. Amenities include a hair dryer, safe, beach bag, tea/coffee facilities, bathrobe and slippers. Details about individual cabins can be found in the deck plan.

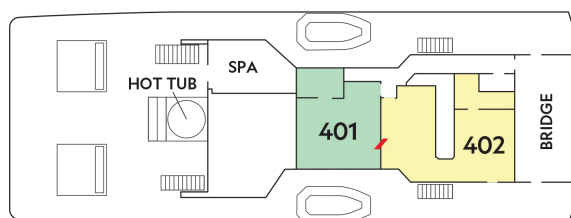


## Sun Deck



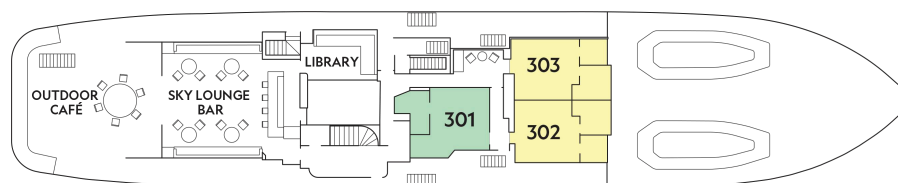
## Bridge Deck

- Category 2
- Category 3



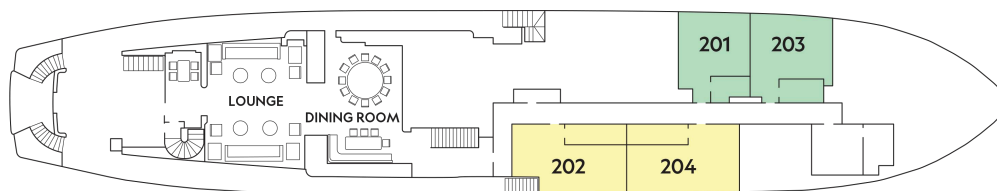
## Forecastle Deck

- Category 2
- Category 3



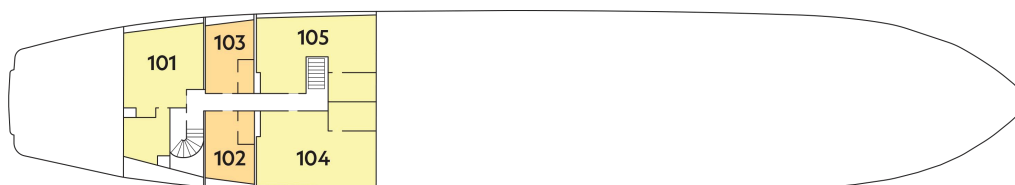
## Main Deck

- Category 2
- Category 3



## Lower Deck

- Category 1
- Category 3





# Ship amenities

## Inviting Public Spaces

Spread across five decks, an array of inviting public spaces beckon guests to relax at sea and convene with their fellow travelers. Indoors, a Library and TV Room, and two lounges are all well-appointed in the ship's soothing brass and ivory decor scheme. Outdoors, guests can enjoy al-fresco dining, an exercise area with ocean views, and an expansive sundeck with plush sunbeds ideal for sunset cocktails. Each private cabin lends a luxurious sense of home, offering the perfect respite after days filled with active adventures.



## Tools for Exploration

Diving is offered on voyages aboard Aqua Blu at no extra cost. This option is limited to 10 experienced certified divers on a first-come-first-served basis. Non-divers can enjoy a range of other water activities, including snorkeling, swimming and kayaking. Call an Expedition Specialist for details.

## Special Offers

### 60% reduced deposit for any 2026 voyage

Book between June 3 and August 1, 2025 and receive 60% off the deposit due at the time of booking. Remaining deposit balance is due at the time of final payment. Additional restrictions may apply. Offer valid for new bookings only on 2026 departures, subject to availability and offer may be withdrawn at any time without prior notice, not applicable on airfare or extensions, and may not be combined with other offers. Call for details.

### BRINGING THE KIDS

We believe sharing an expedition with children is a life-enhancing experience. Save \$500 for each child under the age of 18 on any departure. Not applicable on extensions or airfare. Call for details.

### 10% OFF BACK-TO-BACK VOYAGES

Save 10% on consecutive departures, applicable on voyage fares only and not valid on extensions or airfare. Valid for new bookings only, subject to availability, and may not be combined with other offers. Call for details.

### COMBINING OFFERS

Certain offers may be combinable, up to two savings opportunities, except where noted otherwise. For example, travel with a group of 8 or more on back-to-back expeditions, and take advantage of both savings.

### CELEBRATE LIFE'S MILESTONES

Celebrate a milestone with a group of eight or more and enjoy a special amenity package including: 5%

savings on voyage fares, custom group photo, US\$150 shipboard credit for the group, and other special gifts. Milestone celebration to be communicated at time of booking.

### SAVE 5% TRAVELING AS A GROUP

Save 5% when traveling as a group of eight or more people. Valid on voyage fares only and not applicable on extensions or airfare. Deposit, final payments, and cancellation policies for group travel vary from our regular policies. Valid for new bookings only, subject to availability, and may not be combined with other offers. Call for details.

## Included in price

All accommodations aboard ship and in hotels per itinerary; meals, hors d'oeuvres, snacks and beverages aboard ship (excluding certain premium brands of alcohol); meals on land as indicated, accompanied by nonalcoholic beverages; excursions per itinerary, including scuba diving; park entrance fees and photography fees; arrival and departure airport transfers to and from recommended flights, as indicated in the itinerary; gratuities to all service staff, including guides and ship's crew; guidance and company of leading expedition staff; assistance of a National Geographic certified photo instructor; presentations by expedition staff; Wi-Fi aboard ship; complimentary reusable water bottle; laundry services aboard the ship; and 24-hour access to lounge and other shared spaces onboard ship. Unused services or items included in our programs are non-refundable.

## Not included in price

Airfare\*; additional hotel nights; spa treatments, Wi-Fi in hotels (if not included by hotels), and phone services (except when indicated as included); travel protection plans; passport, visa, and immigration fees; and items of a personal nature, such as souvenirs, and laundry in hotels.

\*Recommended flight costs include flight(s) that take place during the date range of your trip to transport travelers from one itinerary destination to another. This cost also includes ground transportation, luggage transfer, and airport assistance. If you prefer to arrange your own flights privately, have alternate means of transport, or wish to modify at a later time, please contact an Expedition Specialist. Additional costs associated with medical services outside onboard physician consultation.

## Travel protection plan

We strongly recommend our guests to take advantage of our Travel Protection Plan. This plan offers comprehensive coverage to protect you from cancellation fees, costs incurred due to trip delays/interruption, damage or loss of baggage, medical assistance, and evacuation during your travels. Our Travel Protection Plan is available for U.S. residents only, and may be purchased any time prior to final payment due date, Travel Protection premiums are non-

refundable once plan is purchased. Learn more about our Travel Protection "Plus" Plan: <https://www.expeditions.com/terms-conditions/travel-protection-plan/>

## Cancellation policy

Review our cancellation policy: <https://www.expeditions.com/cancellation-policy/>