

Crossroads of the Adriatic and Aegean: Greece, Croatia and Albania






specialists in history and culture—adds depth and context to everything you experience.

Embark on an immersive journey offered in collaboration with the experts at *Food & Wine*, blending coastal discovery with memorable culinary experiences across the Cyclades and beyond. As you sail between storied islands and along ancient coastlines, you'll encounter whitewashed villages, medieval walled cities and landscapes shaped by mythology and maritime history. Regional flavors and traditions come to life through local dishes ashore and curated culinary moments aboard. Throughout the voyage, an onboard wine expert leads tastings of wines personally selected by *Food & Wine's* Executive Wine Editor, Ray Isle, while a team of naturalists—including

From

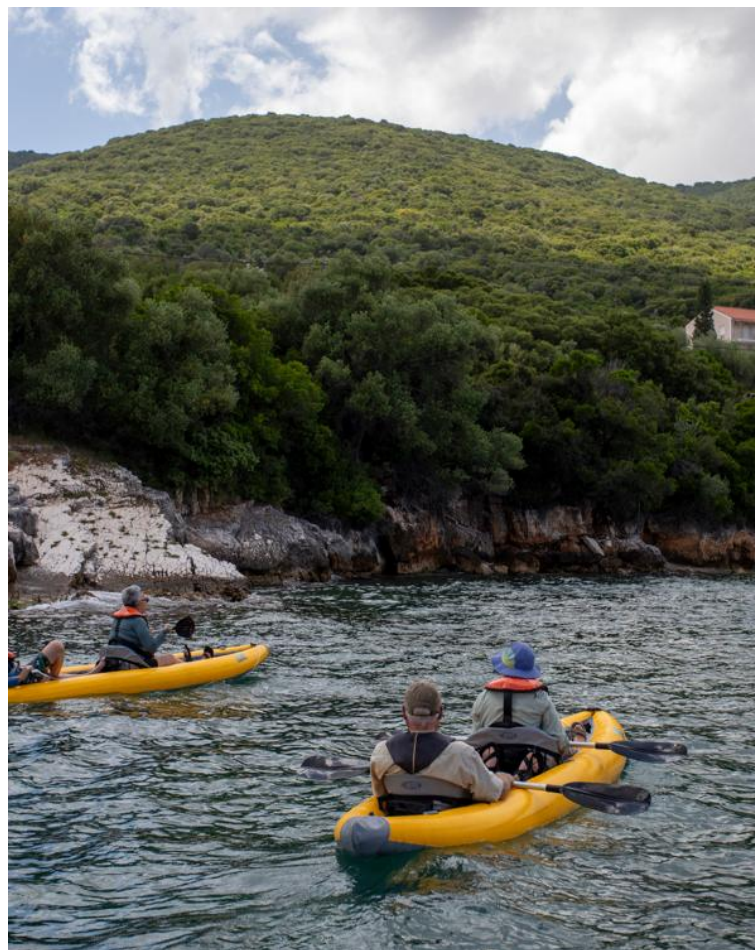
£11,598 / per person

Does not include flights

 DATES Jul and Aug	 DURATION 15 Days
 SHIPS <i>National Geographic Orion</i>	
 STARTS AT Athens, Greece	→  ENDS AT Zadar, Croatia

Highlights

- ★ Swim, kayak or paddleboard in the turquoise waters of the Cyclades, and take in classic Aegean sunsets from the beautiful open deck of *National Geographic Orion*
- ★ Indulge in gourmet menus guided by the rhythms of the season, featuring sustainable ingredients primarily sourced from the Mediterranean
- ★ Navigate the iconic Corinth Canal, a spectacularly scenic cut that is inaccessible to larger ships
- ★ Explore Dubrovnik—the pearl of the Adriatic—while strolling atop its ancient walls, trying your hand at oystering, or participating in a cooking or silk embroidery class





Day by day

■ DAY 1

Athens, Greece / Lavrio / Embark Ship

Arrive in Athens, the capital city of Greece, and transfer to Lavrio, where you'll embark the ship in the afternoon. Settle into your cabin and take in your first Aegean sunset at sea as you pass the Temple of Poseidon. Or explore more on a pre-voyage extension in Athens.

Meals included: dinner

◇ DAY 2

Milos

Spend the morning exploring the sea caves at Kleftiko, and if conditions allow, get in the water. This afternoon, on the charming volcanic island of Milos, view the Ancient Theater and enjoy an island tour, including a visit to the stunning Sarakiniko, a majestic other-worldly beach cove surrounded by large white volcanic stones. In the small town of Trypiti, visit the 1820 excavation site of 'Venus de Milo,' one of the most famous works of ancient Greek sculpture, now exhibited in the Louvre. This evening, enjoy dinner on board or explore Adamantas on your own. Be sure to stop by the famous ice cream shops.

Meals included: breakfast, lunch, dinner

◇ DAY 3

Sifnos

Sifnos—a local favorite—is a peaceful, rugged island known for its sandy beaches, plethora of churches and trendy food scene. With a scenic upper *chora* (village) that invites exploration, visit quaint little churches that sit precariously on the edge of the sea. This morning, go on a scenic hike and then

join a walking tour of the Kastro, with an optional cooking class at a local farm. Our Sifnos visit also offers an optional hands-on pottery experience. Spend the afternoon on board or enjoying the water at a local beach. Whatever your pace, this is the ideal place to explore on foot, whether it's a brisk walk or a lazy stroll along the beach.

Meals included: breakfast, lunch, dinner

◇ DAY 4

Serifos

On Serifos, one of the smaller Cycladic islands, visit the Chora for views across the Aegean Sea. Enjoy a stop at the Mineralogy and Petrology Museum, the Monastery of Taxiarches or spend time in the water enjoying a local beach or kayaking.

Meals included: breakfast, lunch, dinner

◇ DAY 5

Paros

In Paros, explore the charming Kastro, visit a winery or join an optional excursion with a local farmer to hear how they make dry-land farming work. Afterward, taste the fruits of their bounty. Visit charming villages along the harbor like Parikia and Naoussa that offer a maze of streets and alleyways to explore.

Meals included: breakfast, lunch, dinner

◇ DAY 6

Naxos

This morning, choose to go on an early hike on Naxos. Visit an olive press museum and meet the fifth-generation owners while sampling cake, oil and marmalades, or enjoy a self-guided tour of the Kastro. This afternoon, choose to explore on your

own, or join an optional cooking class or optional cheese making activity.

Meals included: breakfast, lunch, dinner

◇ DAY 7

Delos / Tinos

The island of Delos is one of the most important mythical and historical sites in Greece and a designated UNESCO World Heritage site. In myth, it's the birthplace of the twin immortals Artemis, goddess of animals and the hunt, and Apollo, god of healing, music and light. Spend the morning surveying the Terrace of the Lions and exquisite Temple of Apollo, two of the many incredible ruins preserved here.

This afternoon, go ashore in Tinos, a smaller and less-visited Cycladic island, for a hike. Visit the artistic heart of Tinos, Pyrgos Village, the Tinos Marble Museum or take part in a basket-weaving activity. Explore the small towns and artisan crafts that make this island so unique.

Meals included: breakfast, lunch, dinner

◇ DAY 8

Lavrio / Athens / Lavrio

Arrive in Lavrio and, after breakfast on board, transfer to Athens. Explore the city on a guided tour, then sit down to lunch at a local restaurant. This afternoon, return to the ship in Lavrio and settle back into your cabin. Enjoy the Aegean sunset as you sail toward the Adriatic.

Meals included: breakfast, lunch, dinner

◇ DAY 9

Corinth Canal / Delphi

Enjoy breakfast on deck as the ship navigates the historic Corinth Canal, slipping between the 300-foot limestone walls that tower above both sides of the vessel. Built in the late 19th century,

the canal is too small for most modern-day ships, but the *National Geographic Orion* is perfectly sized for the transit to the Gulf of Corinth and Ionian Sea.

Later, visit the UNESCO World Heritage site of Delphi, the center of the ancient Greek world. The ruins here are home to the Temple of Apollo—Greece's most important shrine—where the Oracle of Delphi delivered divine prophecies. Your onboard local guides will share the city's storied past as you explore the temple and other important sites.

Meals included: breakfast, lunch, dinner

◇ DAY 10

Kefalonia

Your Expedition Leader and local guides will choose one of the many picturesque beaches on the island of Kefalonia, bordered by the idyllic Ionian Sea. Soak in the vivid blue waters—a true photographer's delight. Stroll along the shoreline, or swim, kayak or paddleboard in the beautiful sea.

Meals included: breakfast, lunch, dinner

◇ DAY 11

Corfu / Butrint, Albania

Sandwiched between two fortresses, Corfu's World Heritage-listed Old Town, a UNESCO World Heritage center, begs to be explored. Choose to wander the maze of Venetian lanes and shaded town squares, or enjoy a walking tour of the 6th-century Old Fortress of Corfu. This afternoon, cross into Albania and arrive at Butrint National Park, a UNESCO World Heritage site that was first settled by the Greeks in the 7th century BC and is known for its well-preserved Roman ruins. This mesmerizing tapestry of ancient ruins is a wonderful representation of Albania's lush landscapes.

Meals included: breakfast, lunch, dinner

◇ DAY 12

Krujë / Divjakë-Karavasta National Park

After docking in Durrës, drive to Albania’s ancient capital of Krujë, just north of its modern-day capital of Tirana. Wander the stalls of the medieval bazaar, visit the Ethnographic Museum and tour the museum dedicated to Albania’s larger-than-life national hero, Skanderbeg—the warrior who led a 15th-century rebellion against the Ottoman Empire. Cap off the day with a stirring folkloric performance. Or, if you’re interested in birding, visit the lagoons of Divjakë-Karavasta National Park, home to over 200 avian species, including the greater flamingo, Kentish plover and the extremely rare dalmatian pelican.

Meals included: breakfast, lunch, dinner

◇ DAY 13

Dubrovnik, Croatia

Wake up anchored off the ancient walls of Dubrovnik’s Old City—a UNESCO World Heritage site that is considered one of the best-preserved medieval towns in the world. Choose from several experiences to customize your day. Participate in a guided walk of the fortified walls, go oystering and enjoy a seafood lunch in the neighboring town of Ston, take part in an interactive cooking class in a quaint rural home or learn about traditional silk embroidery at a local workshop.

Meals included: breakfast, lunch, dinner

◇ DAY 14

Komiža, Vis Island

One of the outermost Croatian islands, Vis was ruled successively by the ancient Greeks, Romans, Venetians, Austrians and Italians. It became a central Yugoslav military base during World War

II and only opened to tourists in the 1990s, making it less developed and less populated than many of its neighbors. Spend the morning exploring one of the island’s sea caves (conditions permitting).

Arrive in Komiža after lunch and embark on your choice of several optional experiences, including a hike to the headquarters of Yugoslav resistance leader Josip Broz Tito, where he hid troops and weapons in extensive underground tunnels at the end of World War II and into the Cold War. Venture to hillside barracks and hidden bunkers, or explore the charming downtown.

Meals included: breakfast, lunch, dinner

■ DAY 15

Zadar / Disembark Ship

Enjoy a farewell breakfast on board before disembarking in Zadar and transferring to the Zadar airport for your flight home.

Note: A transfer will be offered from Gaženica port in Zadar to the Split airport, arriving at Split airport at 10:30am.

Meals included: breakfast

Westbound

Athens, Greece → Zadar, Croatia

2026 DEPARTURE DATES

Aboard *National Geographic Orion*

28 Jul				
--------	--	--	--	--

Alternative Routes

Visit Expeditions.com for more information.

2027 Departure Dates

28 Aug



National Geographic Orion

GUESTS

102

CABINS

53

Joining the Lindblad fleet in 2013, the state-of-the-art *National Geographic Orion* serves as a luxurious base camp for voyages to the far-flung corners of the planet.

Built in Germany by the Cassens shipyard, the 102-guest *National Geographic Orion* was created with a high ice class to be able to venture safely into polar regions. A ship of her size is seldom built with such ice-cutting ability, which makes her a rarity. She is yacht-scale, yet rugged enough to venture far afield, making her a perfect addition to the Lindblad fleet, which she joined in 2013. Her size and nimbleness offer the perfect combination of safety and liberty to voyage untrammelled locations. In fact, *National Geographic Orion* currently holds the distinction of having sailed further south than any other Lindblad vessel.

Her menu, created by famed Australian chef, Serge Dansereau, owner of Sydney's acclaimed Bather's Pavilion restaurant, enormously popular with *National Geographic Orion's* guests, so impressed Sven Lindblad, that Serge, a chef-owner who shared the Lindblad commitment to serving local and sustainable food, was enlisted to design the dining program for the entire National Geographic-Lindblad Expeditions fleet.

National Geographic Orion is gracious and intimate, with a rewarding, almost clubby feeling. Of her many amenities and features, the most appealing is her outside deck space which beckons in the balmy reaches of the Pacific, and on those days in Antarctica when the midnight sun and the spectacle of the ice makes going indoors, let alone going to bed, impossible.

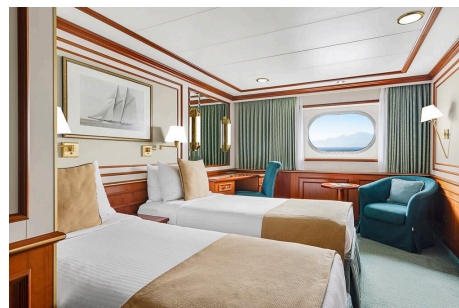


Cabin Categories

Category 1

MAIN DECK #316, 318-321

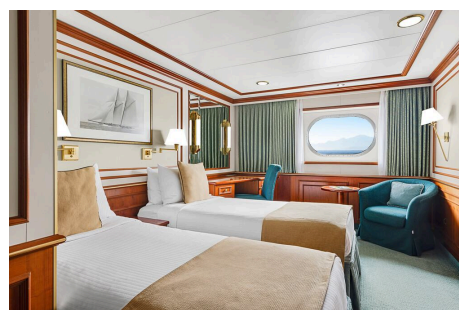
Cabins feature a luminous oval window and configurable beds: two single beds that can be converted to a queen. An armchair, reading lamps, a flat screen TV, two bedside tables, coffee table, desk and climate controls complete the amenities. Marble bathrooms are generously sized and include a spacious shower stall with a glass door.



Category 2

MAIN DECK #302-312, 314, 315, 317

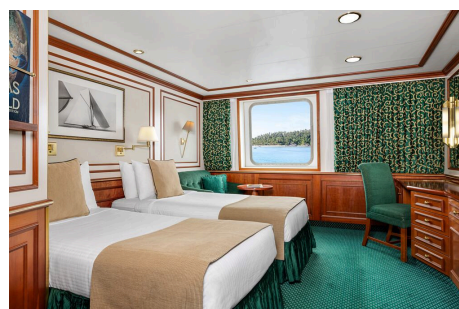
Cabins feature a luminous oval window and configurable beds: two single beds that can be converted to a queen. An armchair, reading lamps, a flat screen TV, bedside table, coffee table, desk and climate controls complete the amenities. Marble bathrooms are generously sized and include a spacious shower stall with a glass door.



Category 3

UPPER DECK #401-412, 414-419

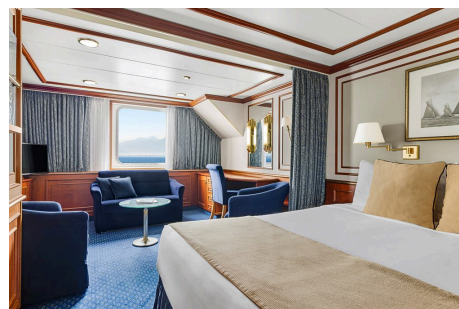
These suites feature a sitting area with a large window, a sofa—except slightly smaller #401 & #402—an armchair or two, writing/laptop desk, reading lamps, coffee table, flat screen TV, bedside table and climate controls. Beds are configurable (call for details). Marble bathrooms include a spacious shower stall with a glass door.



Category 4

BRIDGE DECK #511, 515

These two suites feature separate sleeping and sitting areas, with a chair and armchair, coffee table, and a two-cushion sofa facing an expansive window. Beds are configurable (call for details). Ample storage, reading lamps, a flat screen TV and climate controls complete the amenities. Marble bathrooms are generously sized and include a spacious shower stall with a glass door.



Category 5

BRIDGE DECK #501, 503-506, 508

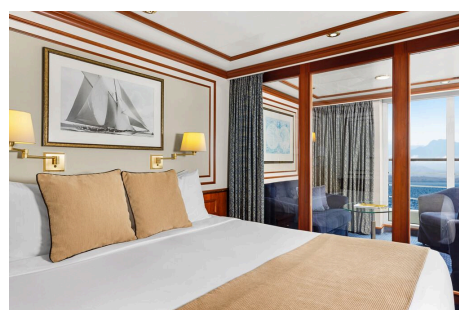
These spacious suites feature open living areas and sliding glass doors opening to a shared French balcony. Beds are configurable (call for details). A separate sitting area with armchairs and a sofa, a writing/laptop desk, coffee table, well-placed reading lamps, a flat screen TV and climate controls complete the decor. Marble bathrooms are generously sized and include a spacious shower stall with a glass door.



Category 6

BRIDGE DECK #502, 507, 509*, 510

These large, elegant suites feature a French balcony, except for #509 which has double windows. Each provides a separate living area with a sofa and two armchairs, coffee table, except for #502, which uniquely offers a 'soaking tub with a view' in addition to a shower stall and expansive vanity. All cabins have reading lamps, a flat screen TV and climate controls. Marble bathrooms are generously sized and include a spacious shower stall with a glass door.



Category 1 Solo

MAIN DECK #301, 322, 323

These solo cabins feature a window or two portholes, a queen-size bed, except for #301 which has a double bed, writing desk and chair, climate controls, reading lamps, coffee table, two bedside tables and a TV. Marble bathrooms are generously sized and include a roomy shower stall with a glass door.



Category 3 Solo

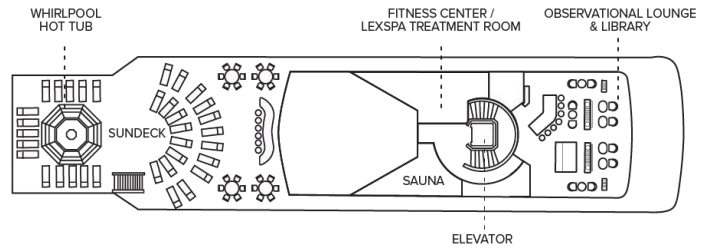
UPPER DECK #512

This solo suite features two single beds and two large windows, plus two armchairs and a small table, reading lamps, coffee table a flat screen TV and climate controls. The marble bathroom is generously sized and includes a spacious shower stall with a glass door.



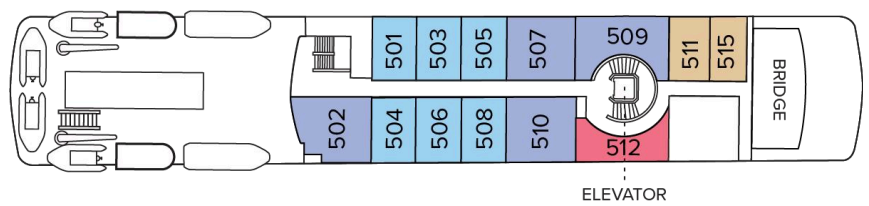
Deck Plans

Observation Deck



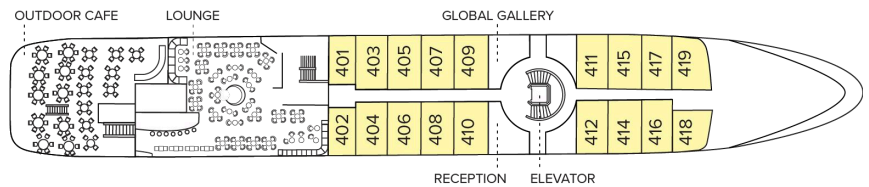
Bridge Deck

- Category 4
- Category 5
- Category 6
- Category 3 Solo



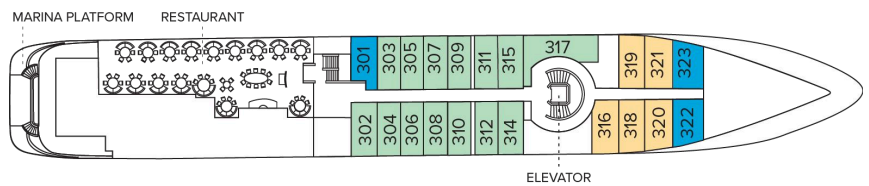
Upper Deck

- Category 3

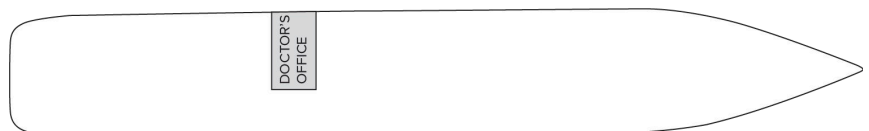


Main Deck

- Category 1
- Category 2
- Category 1 Solo



Expedition Deck



Ship Amenities

Public Areas

Reception; two dining areas; lounge with bar and state-of-the-art presentation facilities; OM System photo locker; sundeck with a whirlpool hot tub that doubles as a plunge pool in warm climates; observation lounge and library; global gallery; a marina platform; plus open access to the Bridge, the Captain, officers and on-duty wildlife spotters.

Meals

Meals are served in the dining room, or weather permitting, the outdoor café, at a single seating with unassigned tables for an informal atmosphere and easy mingling. Menus feature sustainable choices, local where possible.

Cabins

All cabins face outside with windows or portholes, private bathroom, and climate controls. Cabins feature a coffee table, lounge chair, desk, phone, TV with on demand entertainment, multiple outlets and USB, mini refrigerator, and safe. Luxury linens and pillows. Botanically inspired shampoo, conditioner, shower gel and lotion are all available in cabin bathrooms, as well as an Expedition Essential Kit. Hair dryers, complimentary insulated water bottles and a National Geographic Atlas are available in each cabin.

Expedition Equipment

Zodiac landing craft, a fleet of double kayaks, a crow's nest camera, a hydrophone, underwater video cameras, video microscope and an ROV. Plus, for South Pacific voyages: snorkeling gear for all guests, scuba gear for a number of pre-qualified guests, stand-up paddleboards, glass-bottom Zodiac and splash-cam.

Special Features

A full-time doctor, undersea specialist, National Geographic photographer and National Geographic-Lindblad Expeditions certified photo instructor. A central staircase and elevator reach all decks. Enjoy daily teatime and the smoothies served after the sunrise stretch sessions on the sundeck in Polynesia.

Wellness

A fitness center, LEXspa treatment room and sauna, staffed by wellness specialists.

Self-Disinfecting Ships

ACT Clean Coat™ is a light-activated, self-disinfecting cleaning process that continuously breaks down viruses, bacteria, mold, and airborne allergens across all ship surfaces. This non-toxic, chemical-free system also helps us save over one million gallons of water each year in our cleaning procedures.

Special Offers

CELEBRATE LIFE'S MILESTONES

Celebrate a milestone with a group of eight or more and enjoy a special amenity package including: 5% savings on voyage fares, custom group photo, US\$150 shipboard credit for the group, and other special gifts. Milestone celebration to be communicated at time of booking.

CELEBRATE LIFE'S MILESTONES

Celebrate a milestone with a group of eight or more and enjoy a special amenity package including: 5% savings on voyage fares, custom group photo, US\$150 shipboard credit for the group, and other special gifts. Milestone celebration to be communicated at time of booking.

COMBINING OFFERS

Certain offers may be combinable, up to two savings opportunities, except where noted otherwise. For example, travel with a group of 8 or more on back-to-back expeditions, and take advantage of both savings.

SAVE 5% TRAVELING AS A GROUP

Save 5% when traveling as a group of 8 or more people. Valid for new bookings only on select departures, subject to availability, not applicable on extensions, and may not be combined with other offers. Call for details.

10% OFF BACK-TO-BACK VOYAGES

Save 10% on consecutive departures, applicable on voyage fares only and not valid on extensions or airfare. Valid for new bookings only, subject to availability, and may not be combined with other offers. Call for details.

TRAVEL PROTECTION PLAN

We strongly recommend our guests to take advantage of our Travel Protection Plan. This plan offers comprehensive coverage to protect you from cancellation fees, costs incurred due to trip delays/interruption, damage or loss of baggage, medical assistance, and evacuation during your travels. Our Travel Protection Plan is available for U.S. residents only, and may be purchased any time prior to final payment due date, Travel Protection premiums are non-refundable once plan is purchased. Learn more about our Travel Protection "Plus" Plan: <https://www.expeditions.com/terms-conditions/travel-protection-plan/>

CANCELLATION POLICY

Review our cancellation policy: <https://www.expeditions.com/cancellation-policy/>