



Mediterranean Aboard National Geographic Orion, Mediterranean, Europe, &
37° 59' N 23° 43' E

Greek Isles Odyssey: Mythology, History and Cerulean Seas

Legends come to life in the Greek Isles, where sun-drenched shores hold ancient relics and the rich cultural and culinary traditions of an illustrious civilization. Embark on an Aegean odyssey designed as part of an exclusive wine collaboration with the experts at *Food & Wine* magazine, and discover Cycladic islands both storied and secret, from historic Delos to laid-back Naxos and Paros. Delve into the region's legendary culinary delights—from unique sweets and delicious olive oils to spicy volcanic wines—and explore the mythology and archaeology that make these islands iconic. Bask in the beauty of whitewashed villages, and go for a swim in the Aegean's inviting turquoise waters. Nightly tastings guided by our onboard wine expert highlight more than 40 bottles personally selected by *Food & Wine* magazine's Executive Wine Editor, Ray Isle.

From

\$ 7,735 / per person
Does not include flights



DATES

May, Jul, Aug
and Sep



DURATION

8 Days



SHIPS

National Geographic Orion



STARTS AT

Athens,
Greece



ENDS AT

Athens,
Greece

Itinerary note: Routing may vary and stops may be subject to modification and/or permitting. Activities are included in your voyage price; however, some departures may offer optional premium excursions at an additional cost.

Highlights

- ★ Swim, kayak, or paddleboard in the turquoise waters of the Cyclades, and take in classic Aegean sunsets from the beautiful open deck of *National Geographic Orion*
- ★ Indulge in gourmet menus guided by the rhythms of the season, featuring sustainable ingredients primarily sourced from the Mediterranean
- ★ Walk in the footsteps of gods and goddesses on Delos
- ★ On Milos, visit the Ancient Theater and the farm where the famed Greek sculpture of *Venus de Milo* was evacuated





Day by day

■ DAY 1

Athens, Greece / Lavrio / Embark Ship

Arrive in Athens, the capital city of Greece, and transfer to Lavrio, where you'll embark the ship in the afternoon. Settle into your cabin and take in your first Aegean sunset at sea as you pass the Temple of Poseidon. Or explore more on a pre-voyage extension in Athens.

Meals included: dinner

◇ DAY 2

Milos

Spend the morning exploring the sea caves at Kleftiko, and if conditions allow, get in the water. This afternoon, on the charming volcanic island of Milos, view the Ancient Theater and enjoy an island tour, including a visit to the stunning Sarakiniko, a majestic other-worldly beach cove surrounded by large white volcanic stones. In the small town of Trypiti, visit the 1820 excavation site of 'Venus de Milo,' one of the most famous works of ancient Greek sculpture, now exhibited in the Louvre. This evening, enjoy dinner on board or explore Adamantas on your own. Be sure to stop by the famous ice cream shops.

Meals included: breakfast, lunch, dinner

◇ DAY 3

Sifnos

Sifnos—a local favorite—is a peaceful, rugged island known for its sandy beaches, plethora of churches and trendy food scene. With a scenic upper *chora* (village) that invites exploration, visit quaint little churches that sit precariously on the edge of the sea. This morning, go on a scenic hike and then join a walking tour of the Kastro, with an optional cooking

class at a local farm. Our Sifnos visit also offers an optional hands-on pottery experience. Spend the afternoon on board or enjoying the water at a local beach. Whatever your pace, this is the ideal place to explore on foot, whether it's a brisk walk or a lazy stroll along the beach.

Meals included: breakfast, lunch, dinner

◇ DAY 4

Serifos

On Serifos, one of the smaller Cycladic islands, visit the Chora for views across the Aegean Sea. Enjoy a stop at the Mineralogy and Petrology Museum, the Monastery of Taxiarches or spend time in the water enjoying a local beach or kayaking.

Meals included: breakfast, lunch, dinner

◇ DAY 5

Paros

In Paros, explore the charming Kastro, visit a winery or join an optional excursion with a local farmer to hear how they make dry-land farming work. Afterward, taste the fruits of their bounty. Visit charming villages along the harbor like Parikia and Naoussa that offer a maze of streets and alleyways to explore.

Meals included: breakfast, lunch, dinner

◇ DAY 6

Naxos

This morning, choose to go on an early hike on Naxos. Visit an olive press museum and meet the fifth-generation owners while sampling cake, oil and marmalades, or enjoy a self-guided tour of the Kastro. This afternoon, choose to explore on your own, or join an optional cooking class or optional cheese making activity.

Meals included: breakfast, lunch, dinner

◇ DAY 7

Delos / Tinos

The island of Delos is one of the most important mythical and historical sites in Greece and a designated UNESCO World Heritage site. In myth, it's the birthplace of the twin immortals Artemis, goddess of animals and the hunt, and Apollo, god of healing, music and light. Spend the morning surveying the Terrace of the Lions and exquisite Temple of Apollo, two of the many incredible ruins preserved here.

This afternoon, go ashore in Tinos, a smaller and less-visited Cycladic island, for a hike. Visit the artistic heart of Tinos, Pyrgos Village, the Tinos Marble Museum or take part in a basket-weaving activity. Explore the small towns and artisan crafts that make this island so unique.

Meals included: breakfast, lunch, dinner

■ DAY 8

Lavrio / Disembark Ship / Athens

Arrive in Lavrio this morning. Enjoy a farewell breakfast on board before disembarking and transferring to the Athens airport for your flight home, or explore more on a post-voyage extension in Crete.

Meals included: breakfast

Expedition

Athens, Greece → Athens, Greece

2026 Departure Dates

Aboard *National Geographic Orion*

03 Jun	10 Jun			
01 Jul	28 Jul			
01 Sep				

2027 Departure Dates

Aboard *National Geographic Orion*

19 Apr	26 Apr			
06 Jun				
04 Sep				



National Geographic Orion

Guests

102

Cabins

53

Joining the Lindblad fleet in 2013, the state-of-the-art *National Geographic Orion* serves as a luxurious base camp for voyages to the far-flung corners of the planet.

Built in Germany by the Cassens shipyard, the 102-guest *National Geographic Orion* was created with a high-ice class to be able to venture safely into polar regions. A ship of her size is seldom built with such ice-cutting ability, which makes her a rarity. She is yacht-scale, yet rugged enough to venture far afield, making her a perfect addition to the Lindblad fleet, which she joined in 2013. Her size and nimbleness offer the perfect combination of safety and liberty to voyage untrammelled locations. In fact, *National Geographic Orion* currently holds the distinction of having sailed further south than any other Lindblad vessel.

Her menu, created by famed Australian chef, Serge Dansereau, owner of Sydney's acclaimed Bather's Pavilion restaurant, enormously popular with *National Geographic Orion's* guests, so impressed Sven Lindblad, that Serge, a chef-owner who shared the Lindblad commitment to serving local and sustainable food, was enlisted to design the dining program for the entire Lindblad-National Geographic fleet.

National Geographic Orion is gracious and intimate, with a rewarding, almost clubby feeling. Of her many amenities and features, the most appealing is her outside deck space which beckons in the balmy reaches of the Pacific, and on those days in Antarctica when the midnight sun and the spectacle of the ice makes going indoors, let alone going to bed, impossible.



Cabin Categories

Category 1

Main Deck: #316, 318-321

Cabins feature a luminous oval window and configurable beds: two single beds that can be converted to a queen. An armchair, reading lamps, a flat screen TV, two bedside tables, coffee table, desk, and climate controls complete the amenities. Marble bathrooms are generously sized and include a spacious shower stall with a glass door.



Category 2

Main Deck: #302-312, 314, 315, 317

Cabins feature a luminous oval window and configurable beds: two single beds that can be converted to a queen. An armchair, reading lamps, a flat screen TV, bedside table, coffee table, desk, and climate controls complete the amenities. Marble bathrooms are generously sized and include a spacious shower stall with a glass door.



Category 3

Upper Deck: #401-412, 414-419

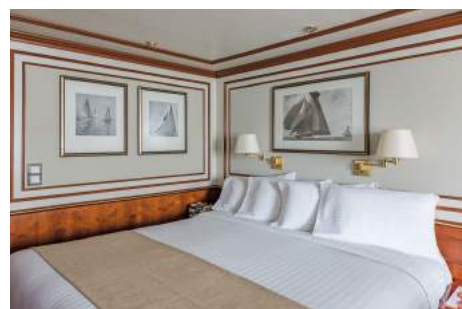
These suites feature a sitting area with a large window, a sofa—except slightly smaller #401 & #402—an armchair or two, writing/laptop desk, reading lamps, coffee table, flat screen TV, bedside table, & climate controls. Beds are configurable (call for details). Marble bathrooms include a spacious shower stall with a glass door.



Category 4

Bridge Deck: #511, 515

These two suites feature separate sleeping and sitting areas, with a chair and armchair, coffee table, and a two-cushion sofa facing an expansive window. Beds are configurable (call for details). Ample storage, reading lamps, a flat screen TV, and climate controls complete the amenities. Marble bathrooms are generously sized and include a spacious shower stall with a glass door.



Category 5

Bridge Deck: #501, 503-506, 508

These spacious suites feature open living areas and sliding glass doors opening to a shared French balcony. Beds are configurable (call for details). A separate sitting area with armchairs and a sofa, a writing/laptop desk, coffee table, well-placed reading lamps, a flat screen TV, and climate controls complete the decor. Marble bathrooms are generously sized and include a spacious shower stall with a glass door.



Category 6

Bridge Deck: #502, 507, 509*, 510

These large, elegant suites feature a French balcony, except for #509 which has double windows. Each provides a separate living area with a sofa and two armchairs, coffee table, except for #502, which uniquely offers a 'soaking tub with a view' in addition to a shower stall and expansive vanity. All cabins have reading lamps, a flat screen TV, and climate controls. Marble bathrooms are generously sized and include a spacious shower stall with a glass door.



Category 1 Solo

Main Deck: #301, 322, 323

These solo cabins feature a window or two portholes, a queen-size bed, except for #301 which has a double bed, writing desk and chair, climate controls, reading lamps, coffee table, two bedside tables, and a TV. Marble bathrooms are generously sized and include a roomy shower stall with a glass door.



Category 3 Solo

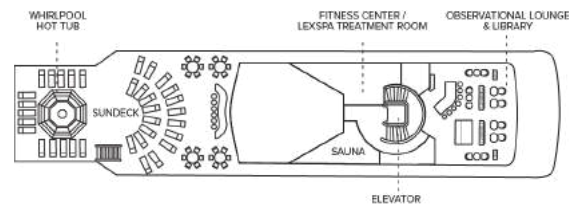
Upper Deck: #512

This solo suite features two single beds and two large windows, plus two armchairs and a small table, reading lamps, coffee table a flat screen TV, and climate controls. The marble bathroom is generously sized and includes a spacious shower stall with a glass door.



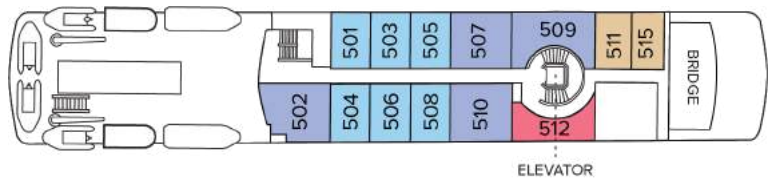
Deck Plans

Observation Deck



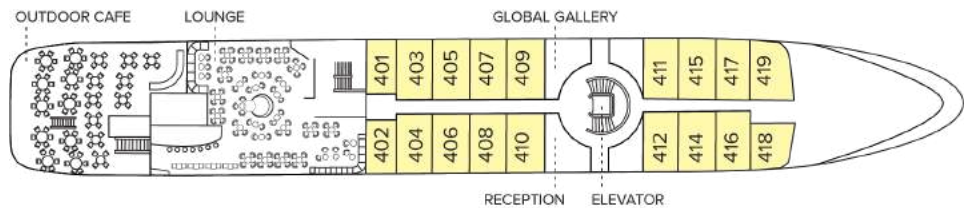
Bridge Deck

- Category 4
- Category 5
- Category 6
- Category 3 Solo



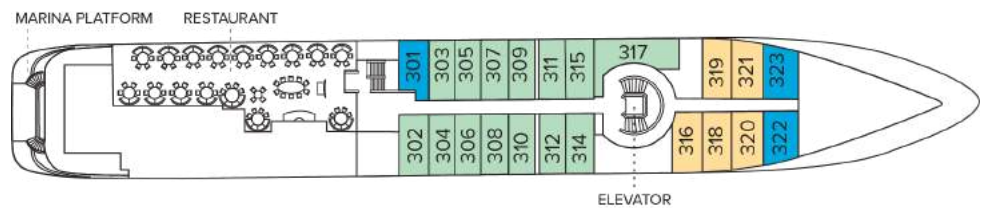
Upper Deck

- Category 3



Main Deck

- Category 1
- Category 2
- Category 1 Solo



Expedition Deck



Ship amenities

Public Areas

Reception; two dining areas; lounge with bar and state-of-the-art presentation facilities; B&H Photo locker; sundeck with a whirlpool hot tub that doubles as a plunge pool in warm climates; observation lounge and library; global gallery; a marina platform; plus open access to the Bridge, the Captain, officers and on-duty wildlife spotters.

Meals

Meals are served in the dining room, or weather permitting, the outdoor café, at a single seating with unassigned tables for an informal atmosphere and easy mingling. Menus feature sustainable choices, local where possible.

Cabins

All cabins face outside with windows or portholes, private bathroom, and climate controls. Cabins feature a coffee table, lounge chair, desk, phone, TV with on demand entertainment, multiple outlets and USB, mini refrigerator, and safe. Luxury linens and pillows. Botanically inspired shampoo, conditioner, shower gel, and lotion are all available in cabin bathrooms, as well as an Expedition Essential Kit. Hair dryers, complimentary insulated water bottles and a National Geographic Atlas is available in each cabin.

Expedition Equipment

Zodiac landing craft, a fleet of double kayaks, a crow's nest camera, a hydrophone, underwater video cameras, video microscope, and an ROV. Plus, for South Pacific voyages: snorkeling gear for all guests, scuba gear for a number of pre-qualified guests, stand-up paddleboards, glass-bottom Zodiac, and splash-cam.

Special Features

A full-time doctor, undersea specialist, National Geographic photographer, Lindblad-National Geographic certified photo instructor and video chronicler. On all South Pacific voyages, there are a minimum of two dive masters. A central staircase, and elevator reaches all decks. Enjoy teatime, daily. And the smoothies served after the sunrise stretch sessions on the sundeck in Polynesia. Don't miss either opportunity.

Wellness

A fitness center, LEXspa treatment room and sauna, staffed by wellness specialists.

Self-Disinfecting Ships

ACT Clean Coat™ is a light-activated, self- disinfecting cleaning process that continuously breaks down viruses, bacteria, mold, and airborne allergens across all ship surfaces. This non-toxic, chemical-free system also helps us save over one million gallons of water each year in our cleaning procedures.

Special Offers

SPECIAL SAVINGS

Receive savings of up to 20% on select voyages as indicated on our special offer page. Applicable savings will be deducted from cabin fare after any additional applicable savings with the purchase of cabin fare. Receive 50% off the deposit due at the time of booking on select 2026 and 2027 voyages outside of final payment. Remaining deposit balance is due at the time of final payment. Additional restrictions may apply. Offers valid on new bookings only for select 2026 and 2027 departures, subject to availability and offer may be withdrawn at any time without prior notice, not applicable on airfare or extensions, and may not be combined with other offers. Call for details.

SUITE EXCLUSIVES

Spacious living areas and incredible views immerse you in the beauty of your marine surroundings. Our new Suite Exclusives package helps make your voyage all the more memorable. [Learn more](#)

CELEBRATE LIFE'S MILESTONES

Celebrate a milestone with a group of eight or more and enjoy a special amenity package including: 5% savings on voyage fares, custom group photo, US\$150 shipboard credit for the group, and other special gifts. Milestone celebration to be communicated at time of booking.

PAY BY DEBIT: EARN A \$100 ONBOARD CREDIT

The \$100 onboard credit offer is applied after the final payment and requires 85% of the cost of the voyage to be placed on a debit card. Maximum of one

\$100 onboard credit per cabin. The \$100 onboard credit is a non-refundable, non-transferable credit that can be used for various onboard purchases such as global gallery and spa treatments. It has no cash value, cannot be refunded if not fully utilized, and will be forfeited if not fully redeemed by the end of the voyage. This offer is combinable with other offers. If the booking is altered or canceled, the onboard credit may be forfeited, and it cannot be transferred if the booking is moved to another guest. Lindblad Expeditions reserves the right to modify or cancel the offer without prior notice. Offer applies to Lindblad Expeditions' owned ships only. Offer valid only for Debit Cards issued in the United States for payments made from the United States.

COMBINING OFFERS

Certain offers may be combinable, up to two savings opportunities, except where noted otherwise. For example, travel with a group of 8 or more on back-to-back expeditions, and take advantage of both savings.

AIR CREDIT

Book from February 10, 2026, to March 31, 2026 and receive air credit of \$1,000 per person, deducted from air fare with the purchase of cabin fare on select 2026 departures code AIR2026. To qualify for the offer, airfare must be ticketed by Lindblad Expeditions. In the case that airfare at the time of booking is higher than \$1,000 per person, guest will be required to pay any amount in excess of \$1,000 per person. Valid for new bookings only on select 2026 departures, subject to availability, not applicable on extensions. This offer is combinable with the Anniversary Offer of up to 20% savings on select voyages as indicated on expeditions.com/anniversaryoffer until March 3, 2026. Not combinable with any other offers. Baggage

fees may incur additional costs and seat assignments
may not be guaranteed. Valid for US and Canadian
residents only.

Included in price

All accommodations aboard ship or in hotels per itinerary; all meals as indicated in the itinerary, both aboard and onshore; beer, wine, cocktails, liquor and spirits aboard the ship (except certain premium brands which are available for purchase); hors d'oeuvres, 24-hour access to snacks, premium coffees and teas, non-alcoholic beverages, and filtered water; excursions and airport transfers to and from recommended flights, as indicated in the itinerary; crew gratuities; exploration tools curated to destination, such as Zodiacs and kayaks; guidance and company of our leading expedition staff; assistance by the National Geographic Photographer and Lindblad Expeditions-National Geographic certified photo instructor; access to the OM System Photo Gear Locker; presentations by expedition staff and expert guest speakers; complimentary reusable water bottle; onboard physician consultations; morning stretch classes and 24-hour access to exercise equipment; 24-hour access to lounges, observation decks, library, and other shared spaces; park and site entrance fees, special access permits, and port taxes. Unused services or items included in our programs are non-refundable.

Not included in price

Airfare (except flights when indicated as included); pre- and post-expedition extensions; additional hotel nights (except when indicated as included); private transfers; laundry, spa treatments, scuba diving for pre-qualified divers on select voyages*, Wi-Fi, and phone services (except when indicated as included); travel protection plans; and passport, visa, and immigration fees.

*Scuba Diving Requirements

- Dives can be challenging so divers must have ample previous experience
- Divers need at least 25 lifetime dives if you're advanced open water and at least 35 if you're just open water
- Divers need to have completed an open water dive or professional refresher course within 12 months of the voyage
- Divers need to receive medical clearance to dive from a doctor (form provided upon registration) and provide proof of dive insurance

Additional costs associated with medical services outside onboard physician consultation.

Travel protection plan

We strongly recommend our guests to take advantage of our Travel Protection Plan. This plan offers comprehensive coverage to protect you from cancellation fees, costs incurred due to trip delays/interruption, damage or loss of baggage, medical assistance, and evacuation during your travels. Our Travel Protection Plan is available for U.S. residents only, and may be purchased any time prior to final payment due date. Travel Protection premiums are non-refundable once plan is purchased. Learn more about our Travel Protection "Plus" Plan: <https://www.expeditions.com/terms-conditions/travel-protection-plan/>

Cancellation policy

Review our cancellation policy: <https://www.expeditions.com/cancellation-policy/>