



Antarctica, Patagonia & South America  
54° 6' S 69° 21' W

## Antarctica and Patagonia: Legendary Ice and Epic Fjords

Join us on an odyssey that combines the celebrated wonders of the southernmost realms of the planet in a single epic voyage. The Antarctic Peninsula, southern Patagonia, and the Chilean fjords are places of unimaginable beauty. Humpback whales breach and penguins gather by the thousands. Icebergs shimmer and sapphire-hued fjords harbor snowcapped peaks and virgin forests. Flexibility is a hallmark of our expedition style, and often the shipboard day-by-day itinerary will change—so we may take full advantage of rare wildlife sightings, watching whales feed off the bow, or perfect conditions for a late day Zodiac excursion.

From  
**\$ 17,854** / per person  
Does not include flights



### DATES

Feb, Mar, Nov  
and Dec



### DURATION

17-18 Days



### SHIPS

*National Geographic Resolution*  
*National Geographic Explorer*



### STARTS AT

Ushuaia,  
Argentina



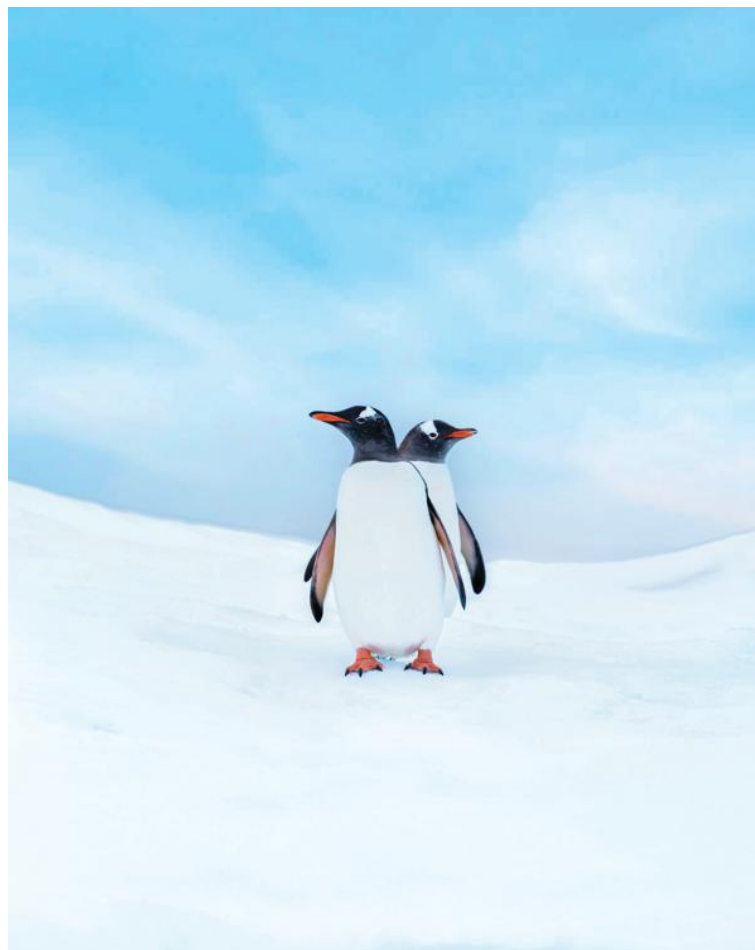
### ENDS AT

Puerto  
Natales,  
Chile

**ROUTING REMINDER:** *National Geographic Resolution* departures route roundtrip via Santiago; *National Geographic Explorer* departures route roundtrip Buenos Aires - Santiago. Please note that the "2025 Northbound (Modified)" and "2025 Southbound (Modified)" are one day shorter than the other routes. Please confirm the route of your departure at the time of booking with an Expedition Specialist or the Lindblad Air Department before making flight arrangements.

## Highlights

- ★ Seek out Antarctica's iconic wildlife—including penguins, seals, and orcas—and marvel at incandescent icebergs using our fleet of kayaks and Zodiacs
- ★ Capture incredible images of the ice and vast penguin colonies with help from a National Geographic Photography Expert
- ★ Navigate Chile's coastal fjords and explore spectacular Glacier Alley, where monumental glaciers calve into the sea
- ★ Hike among the snowcapped "horns" of Torres del Paine National Park and enjoy special access to Karukinka Natural Park, the largest protected land area in Tierra del Fuego









## Day by day

### ■ DAY 1

#### Santiago, Chile

Arrive in Santiago, Chile's mountainous capital, and transfer to the Ritz-Carlton, Santiago, or similar.

**Arrival Time:** Arrive before 11:00 a.m. local time.

**Arrival City:** Santiago, Chile

### ◇ DAY 2

#### Ushuaia, Argentina / Embark Ship

Fly south to Ushuaia, the southernmost city in the world, where you'll meet the ship. Ushuaia's spectacular setting, between the jagged peaks of the Cordillera Darwin and the protected waters of the Beagle Channel, makes it an appropriately wild place to begin your journey to the White Continent. While you're there, you'll visit Tierra del Fuego National Park, where you can view a beautiful forest of southern beech, very much like those that covered Antarctica millions of years ago. Lunch will be served onboard a private catamaran while cruising the Beagle Channel, where you'll be on the lookout for huge South American sea lions and birds like imperial cormorants. Residents of Ushuaia often call their small city 'El Fin Del Mundo', The End of the World, but for you, it's just the beginning.

**Meals included:** breakfast, lunch, dinner

### ◇ DAYS 3-4

#### At Sea / Drake Passage

Sail to Antarctica via the Drake Passage, named after 16th-century English admiral Sir Francis Drake. Watch for dozens of species of seabirds gliding alongside the ship—including the albatross, which boasts the longest wingspan of any extant bird—and enjoy talks from your onboard naturalists about the wildlife and geology that await you on the Antarctic

Peninsula.

**Meals included:** breakfast, lunch, dinner

### ◇ DAYS 5-10

#### Exploring Antarctica

With long hours of daylight at this time of year, you'll have ample opportunities to explore. The schedule is flexible, allowing you to take advantage of the unexpected, whether you're watching whales at play off the bow of the ship or enjoying an evening Zodiac cruise amid glittering icebergs. One day, you might set out by kayak to encounter towering icebergs at water level; embark on a Zodiac excursion in search of seals and blue-eyed shags; or walk on a beach amid thousands of Adélie and gentoo penguins. The next day, you might experience the thrill of the ship crunching through pack ice. The expert expedition team enriches your experiences.

**Meals included:** breakfast, lunch, dinner

### ◇ DAYS 11-12

#### At Sea

Relax on board and enjoy the ship's amenities as the coast of Antarctica disappears from view. Round the southernmost tip of South America at Cape Horn and witness the dramatic meeting of the Atlantic and Pacific Oceans en route to Ushuaia, Argentina.

**Meals included:** breakfast, lunch, dinner

### ◇ DAYS 13-14

#### Exploring the Chilean Fjords

Sail into southern Patagonia's vast wilderness of forested isles, mirror-like lakes and snowcapped peaks. Myriad fjords cut between soaring granite walls, and waterfalls tumble from high above. Explore the region known as Chile's "Glacier

Alley," part of the UNESCO-recognized Cape Horn Biosphere Reserve. Cruise into the secluded Pia Fjord, admiring views of its massive glacier, and glide into Garibaldi Fjord in Alberto de Agostini National Park, where the Andes meet the sea. Get up close to the monumental wall of ice that marks the edge of Garibaldi Glacier, exploring by Zodiac or kayak. Continue to Agostini Fjord, where numerous glaciers originate from the nearby mountains, for a chance to witness thunderous glacial calving.

Meals included: breakfast, lunch, dinner

#### ◇ DAY 15

### Tierra del Fuego: Karukinka Natural Park and Ainsworth Bay

Cruise to Tierra del Fuego and venture into the archipelago's largest protected land area: Karukinka Natural Park. Visit this private reserve by special permission, searching for Andean foxes, guanacos, black-browed albatross and more. Then sail to Ainsworth Bay, a stunning fjord surrounded by subpolar forest, keeping an eye out for elephant seals.

Meals included: breakfast, lunch, dinner

#### ◇ DAY 16

### Francisco Coloane Marine Park

Enter the Strait of Magellan to explore Francisco Coloane Marine Park. The park covers more than 165,000 acres of land and sea and is home to an abundance of wildlife, including humpback whales, two species of sea lions and Magellanic penguins. Cruise along the coastline by Zodiac and kayak to watch for black and white Peale's dolphins, the endangered Chilean dolphin and Andean condors.

Meals included: breakfast, lunch, dinner

#### ◇ DAY 17

### Kirke Narrows / Puerto Natales

Local pilots will join the Captain on the Bridge to guide the ship through the winding Kirke Narrows, accessible only to small expedition ships. You'll then continue your discovery of the Chilean fjords, where you may explore by ship or take a forest walk.

Meals included: breakfast, lunch, dinner

#### ◇ DAY 18

### Puerto Natales and Torres del Paine National Park

Early this morning, dock in picturesque Puerto Natales before heading out to explore majestic Torres del Paine National Park, a UNESCO Biosphere Reserve. Set out by foot or by vehicle across the windswept, rugged landscape, which spans more than 550,000 acres and harbors an astounding variety of geological forms, from the soaring granite pillars of the "horns" and windswept grasslands to rivers, glaciers and gem-colored lagoons. Keep an eye out for guanacos, rheas, foxes and armadillos.

Meals included: breakfast, lunch, dinner

#### ■ DAY 19

### Puerto Natales / Disembark Ship / Santiago

Disembark in Puerto Natales and board your flight to Santiago to connect with your overnight flight home.

**Departure Time:** Depart after 9:00 p.m. local time.

**Departure City:** Santiago, Chile

Meals included: breakfast

## Northbound

Ushuaia, Argentina → Puerto Natales, Chile

### 2027 Departure Dates

Aboard *National Geographic Explorer*

21 Feb

Aboard *National Geographic Resolution*

17 Feb

## Alternative Routes

Visit [Expeditions.com](http://Expeditions.com) for more information.

### 2026 Departure Dates

26 Jan, 10 Feb

### 2027 Departure Dates

03 Nov





## ***National Geographic Resolution***

---

**Guests**

138

**Cabins**

76

---

**The sister ship to *National Geographic Endurance*,  
she explores polar & temperate regions**

Our second new polar build, *National Geographic Resolution*, is named to honor the second voyage of the legendary Captain James Cook.

A fully-stabilized vessel of the highest ice class (PC5 Category A), she will enable adventurous guests to go where few have or can. *Resolution's* most striking exterior feature is her distinctive profile, the patented X-Bow®, a game-changing design that guarantees the smoothest, most comfortable ride in all kinds of conditions; and since it eliminates bow impact, a quieter ride, as well.



An equally impressive feature may well be her capacity: she carries just 138 guests, a commitment to expedition excellence over scale. Scandinavian-inflected, luxuriously appointed, her inviting interiors would be a destination in themselves. Because she is a Lindblad expedition ship, however, her attention is focused on the world outside— with acres of window glass to keep you connected to the stunning views beyond the pane, and a fleet of expedition tools to get you out exploring.

*National Geographic Endurance* and *National Geographic Resolution* are next-generation expedition ships. Purpose-built for polar navigation. Fully stabilized, highly strengthened, ice-class Polar Code PC5 (Category A) vessels, they are designed to navigate polar passages year-round, and safely explore uncharted waters, while providing exceptional comfort. The patented X-bow<sup>®</sup> is key to their design; its powerful wave-slicing action provides an extremely smooth ride even in adverse conditions, and even reduces spray on deck for superior observation. They carry a full suite of expedition tools, and offer a variety of experience enhancing amenities.





# Cabin Categories

## Category 1

**Fore Deck:** #404, 406, 408, 411, 413, 415

Cabin with two large windows, two singles that can convert to a queen, writing desk and chair, two bedside tables, window sofa, coffee table, and a closet.



## Category 2

**Fore Deck:** #410, 412, 414, 416-419, 421-427

Cabin with two large windows, two single beds that can convert to a queen, window sofa, two-seat sofa, coffee table, writing desk with an office chair, two bedside tables, coffee table, and a closet.



## Category 3

**Main Deck:** #512, 514-524

Cabin with balcony that features two balcony chairs, hammock, and a table; two single beds that convert to a queen; convertible sleeper sofa; writing desk with a chair; two bedside tables; coffee table; and a closet.



## Category 4

**Lounge Deck:** #608, 610, 612, 613-623

Cabin with balcony that features two balcony chairs, hammock and a table; two single beds that can convert to a queen; pull-out sofa; coffee table; writing desk with chair; two bedside tables; and a closet.





## Category 5

**Bridge Deck:** #700-707, 712, 713, 715, 717

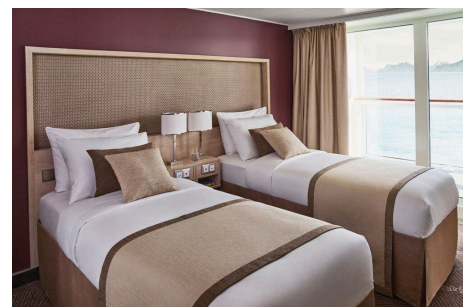
Cabin with balcony that features two balcony chairs, hammock, and a table; two single beds that convert to a queen; convertible sleeper sofa; coffee table; writing desk with chair; two bedside tables; and a closet.



## Category 6

**Bridge Deck:** #714

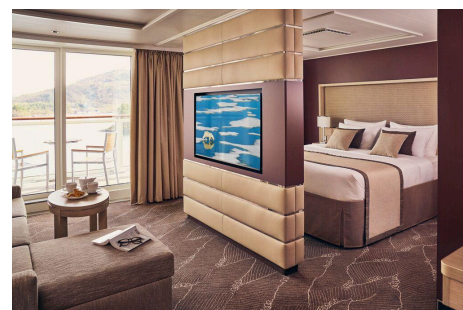
Junior suite with balcony that features two balcony chairs, hammock, and table; two single beds that convert to a queen; pull-out sofa; writing desk with chair; two bedside tables; coffee table; espresso maker and a closet. Guests receive priority access to one spa treatment and one igloo reservation and complementary laundry per departure.



## Category 7

**Bridge Deck:** #708-711, 716, 718, 719, 721

These large balcony suites feature two balcony chairs, hammock, and table; two single beds that can convert to a queen; pull-out sofa; coffee table; writing desk and chair; espresso maker; and a large walk-in closet with full length mirror. Expanded bathroom has a double vanity, bathtub, towel warmer and rain shower. Guests receive priority access to one spa treatment and one igloo reservation and complementary laundry per departure.



## Category A Solo

**Main Deck:** #504, 506-511, 513

Cabin with balcony that features two balcony chairs, hammock, and a table; single bed; writing desk with an office chair; and a closet.



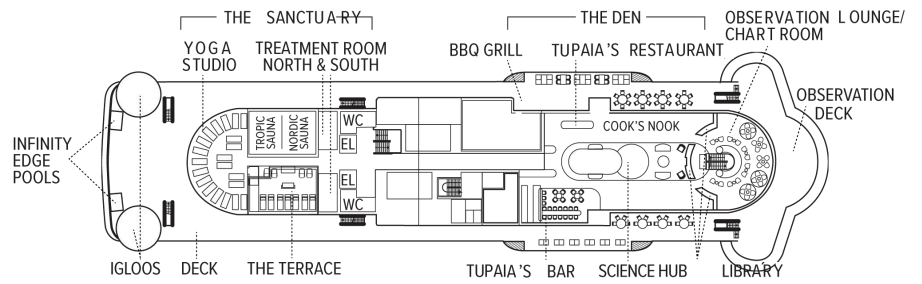
## Category B Solo

**Lounge Deck:** #604-607, 609, 611

Cabin with balcony that features two balcony chairs, hammock, and a table; single bed; writing desk with chair; hammock; and a closet.



## Observation Deck



## Bridge Deck

- Category 5
- Category 6
- Category 7



## Lounge Deck

- Category 4
- Category B Solo



## Main Deck

- Category 3
- Category A Solo

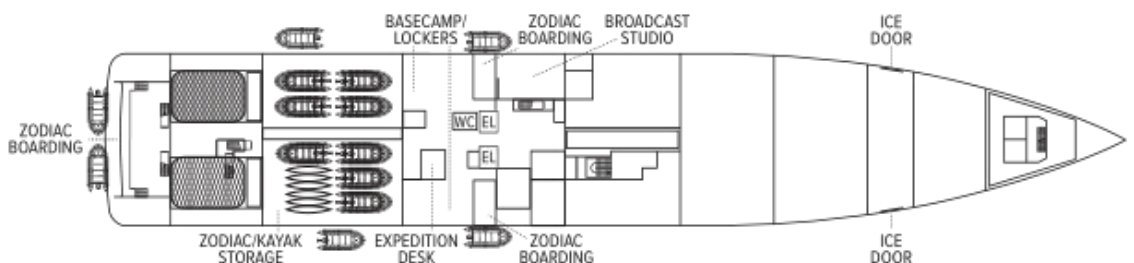


## Fore Deck

- Category 1
- Category 2



## Expedition Deck



# Ship amenities

## Public Areas

Reception; three dining areas; an observation lounge with bar, gym, wellness area, infinity-style outdoor hot tubs with adjacent igloos; library; main lounge with full service bar, 24-hour beverage station, state-of-the-art tech for films/presentations; B&H Photo locker and a photo workshop area; science hub; an onboard broadcast studio; an expedition base with lockers for expedition gear; and open access to the Bridge, Captain, officers and on-duty wildlife spotters.

## Meals

Restaurant 270° features wrap-around views; two other dining areas offer lighter, made-to-order fare or intimate, small group dinners. All feature sustainable choices, local where possible, and unassigned, flexible, inclusive seating.

## Cabins

All cabins face outside with large windows, private bathroom, and climate controls. Cabins are equipped with expedition command centers with iPad tablets, multiple electrical and USB outlets, TVs, with on demand entertainment, phone, Wi-Fi, clock, barometers, hygrometers, vanity mirror, mini refrigerator, small safe, ice bucket, glasses, hair dryer, reading lights and National Geographic Atlas. Luxury linens and pillows. Bathrooms outfitted with Rain showers & hand held shower, botanically inspired shampoo, conditioner, shower gel and lotion. Complimentary insulated water bottles. Balcony cabins have hammocks, chairs and table.

## Expedition Equipment

Zodiac landing craft, kayaks, snowshoes, cross-country skis, an ROV and underwater video camera for unique access to the polar undersea, hydrophone, aerial remote-controlled camera and video microscope.

## Special Features

A full-time doctor, undersea specialist, National Geographic photographer, Lindblad-National Geographic certified photo instructor and video chronicler, an internet cafe and laundry. A forward and aft staircase, and elevators, reach all decks. Echoing the pioneering installation aboard *National Geographic Endurance*, artist Zaria Forman has curated a new exhibit, featuring a wide range of artists.



## Wellness

A glass-enclosed yoga studio, gym, treatment rooms and spa relax area, and high and low-heat saunas with ocean views, staffed by wellness specialists.

## Self-Disinfecting Ships

ACT Clean Coat™ is a light-activated, self-disinfecting cleaning process that continuously breaks down viruses, bacteria, mold, and airborne allergens across all ship surfaces. Not only does this create a cleaner, healthier shipboard environment for guests and crew alike, but this non-toxic, chemical-free system also saves more than one million gallons of water each year in our cleaning procedures, and reduces our carbon footprint as well as the amount of plastic and waste in our supply chain.





## ***National Geographic Explorer***

---

**Guests**

148

**Cabins**

81

---

**Built to handle deep swells and towering waves, the *National Geographic Explorer* lends herself to globe-spanning travel and a dedication to curiosity and wonder.**

Originally constructed for service along Norway's coast as part of the famed Hurtigruten, or Coastal Express, she ferried passengers among the fjords of this iconic coast in conditions that could deteriorate into heavy seas in a matter of minutes. She had to be able to handle deep swells and towering waves—and have a high degree of maneuverability. Those traits, and an ideal size, made her a natural choice for addition to the Lindblad fleet.

The plans to completely rebuild her drew on 50 years of pioneering expedition history and expertise. *National Geographic Explorer* was equipped with an ice-strengthened hull and advanced navigation equipment for polar expeditions; a roster of tools for exploration; and a well-appointed interior with vast expanses of glass for an unprecedented connection to the environment. Her interior and exterior design embodied the Lindblad expedition ethos—the privilege of wildness and the luxury of comfort.

For many guests she remains their paradigm of an expedition ship. She is devoted to exploration—from her Welcoming Bridge, and the Chart Room below it where you can tuck in to warm up with a hot chocolate, to her high-perched Observation deck with its aqueous light and compelling 24/7 views. Even the art on the walls— from the Hurley prints of Shackleton’s expedition to the stunning National Geographic photos— tells an uber- narrative of globe-spanning travel and a dedication to curiosity and wonder.

*National Geographic Explorer* is a state-of-the-art expedition ship. She is a fully stabilized, ice-class vessel, with an ice-reinforced hull, enabling her to navigate polar passages while providing exceptional comfort.



# Cabin Categories

## Category 1

**Main Deck: #301-308**

Cabins feature one or two portholes. Most cabins feature two single beds that can be converted to a queen. Cabins #301-306 feature one queen-sized bed. All cabins feature a writing desk, floor length mirror, reading lamps, well-appointed bathrooms with a roomy glass-wall shower, and a TV.



## Category 2

**Main Deck: #317-320, 335-336**

Cabins feature two single beds (some can convert to a queen-sized bed), and one large window. They offer a writing desk, floor length mirror, reading lamps, sitting chair, well-appointed bathrooms with a roomy glass-wall shower, and a TV.



## Category 3

**Main Deck: #313-316, 321-328, 337-340, 342, 344, 348, 350**

Cabins feature two single beds (some can convert to a queen-sized bed), one large window, and two sitting chairs and a small table and ample storage. They have a writing desk, floor length mirror, reading lamps, well-appointed bathrooms with a roomy glass-wall shower, and a TV. Cabins 341 & 343 have a sofa bed for a triple.





## Category 4

**Upper Deck:** #201-202, 204-207, 210, 212, 217, 226, 228

Cabins feature two single beds and at least one large window. All cabins can convert between two single beds to a queen, except Cabins 217, 226 & 228 that feature one queen-size bed only. All cabins feature climate controls, sitting chairs, and a TV. Bathrooms are also generously sized with a roomy glass-walled shower stall.



**Veranda Deck:** #103-104, 107-108

Cabins feature two single beds that can convert into a queen. They have a writing desk, floor length mirror, reading lamps, sitting chair, private bathrooms with a glass-wall shower, and a TV.

## Category 5

**Upper Deck:** #209, 211, 214, 216, 218, 220-222, 224

Cabins feature a balcony with sliding glass doors, one queen-sized bed, writing desk, floor length mirror, reading lamps, private bathrooms with a glass-wall shower, and a TV. (Cabin 221 has two single beds that can convert to a queen.)



## Category 6

**Upper Deck:** #213

This spacious cabin has a private balcony, two single beds that can be converted into a queen, a writing desk, double closet, bookcase, pull-out sofa, armchairs, two large windows, and a TV. The sleeping area has a glass partition separating the living room. Bathrooms are generously sized with a roomy glass-walled shower stall and twin sinks.



**Veranda Deck:** #101-102

These spacious cabins can be converted into triples. They have two single beds that can be converted into a queen, a writing desk, double closet, bookcase, sofa-bed, chairs, two large windows, and a TV. The sleeping area can be closed off with the glass partition. Bathrooms are generously sized with a roomy glass-walled shower stall and twin sinks.

## Category 7

**Upper Deck:** #215, 219, 230

These large cabins with private balconies have two single beds that can convert to an Olympic-sized queen. They have seating areas with a sofa-bed and can be converted to triples. Cabins also include a desk with chairs, coffee table with sitting chair, and a small table. Bathrooms are generously sized with a roomy glass-walled shower stall and twin sinks.



## Category A Solo

**Main Deck:** #309-311, 329-334

These cabins feature one single bed and a large window, a writing desk, reading lamp, bathroom with a roomy glass-wall shower stall, and a TV.



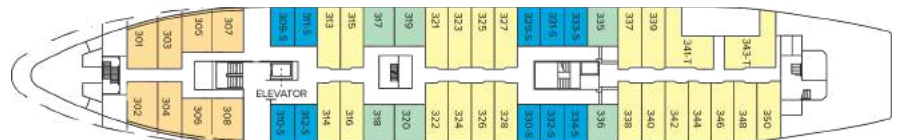
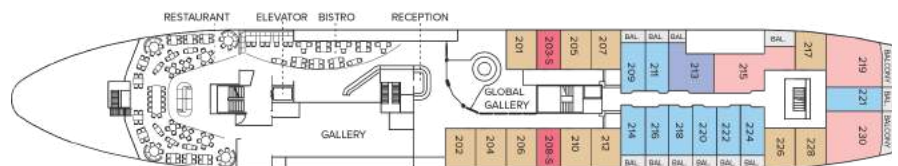
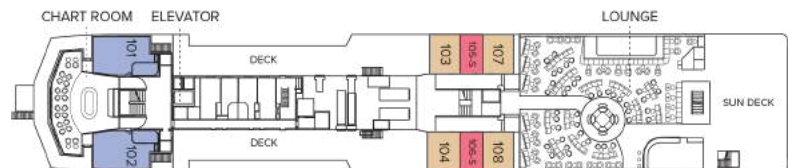
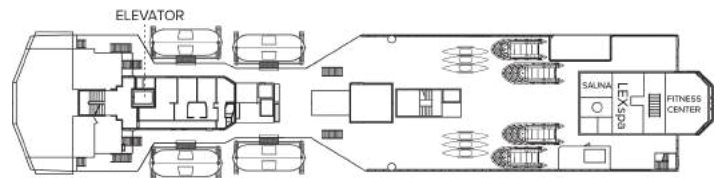
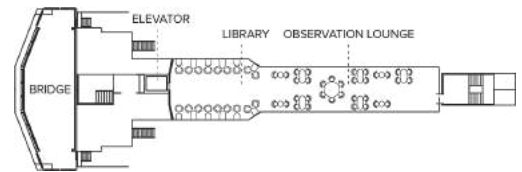
## Category B Solo

**Upper Deck:** #203, 208

**Veranda Deck:** #105-106

These cabins feature one single bed and a large window, a writing desk, reading lamp, bathroom with a roomy glass-wall shower stall, and a TV.





# Ship amenities

## Public Areas

Reception; three dining areas; global gallery; library, B&H Photo locker; 24-hour Bistro area beverage bar; lounge with bar and state-of-the-art presentation facilities; observation lounge; mudroom with lockers for expedition gear; plus open access to the Bridge, the Captain, officers and on-duty wildlife spotters.

## Meals

Meals are served in the dining room, Bistro bar, or the Observation lounge, at a single seating with unassigned tables for an informal atmosphere and easy mingling. Menus feature sustainable choices, local where possible.

## Cabins

81 outside cabins. All cabins face outside with windows or portholes, private bathroom, and climate controls. Cabins are equipped with Wi-Fi, multiple electrical outlets, USB outlets, full length mirror and phones. TV featuring entertainment on demand, live feed for onboard presentations, bow camera and ship's position. Luxury bed linens and pillows. Botanically inspired shampoo, conditioner, shower gel, and lotion are all available in cabin bathrooms, as well as an Expedition Essential Kit. Hair dryers, complimentary insulated water bottles and a National Geographic Atlas is available in each cabin.

## Expedition Equipment

Zodiac landing craft, a fleet of double kayaks, a crow's nest camera, a hydrophone, underwater video cameras, video microscope, and an ROV. Plus, for South Pacific voyages: snorkeling gear for all guests, scuba gear for a number of pre-qualified guests, stand-up paddleboards, glass-bottom Zodiac, and splash-cam.



## Special Features

A full-time doctor, undersea specialist, National Geographic photographer, Lindblad-National Geographic certified photo instructor and video chronicler, internet café and laundry. Enjoy a session in the topside library with a good book, or with the book in your lap, eyes trained on the horizon.

## Wellness

A glass-enclosed fitness center, outdoor stretching area, a LEXspa treatment room and sauna, staffed by wellness specialists.

## Self-Disinfecting Ships

ACT Clean Coat™ is a light-activated, self- disinfecting cleaning process that continuously breaks down viruses, bacteria, mold, and airborne allergens across all ship surfaces. Not only does this create a cleaner, healthier shipboard environment for guests and crew alike, but this non-toxic, chemical- free system also saves more than one million gallons of water each year in our cleaning procedures, and reduces our carbon footprint as well as the amount of plastic and waste in our supply chain.



## Special Offers

### SPECIAL SAVINGS

Receive savings of up to 20% on select voyages as indicated on our special offer page. Applicable savings will be deducted from cabin fare after any additional applicable savings with the purchase of cabin fare. Receive 50% off the deposit due at the time of booking on select 2026 and 2027 voyages outside of final payment. Remaining deposit balance is due at the time of final payment. Additional restrictions may apply. Offers valid on new bookings only for select 2026 and 2027 departures, subject to availability and offer may be withdrawn at any time without prior notice, not applicable on airfare or extensions, and may not be combined with other offers. Call for details.

### SUITE EXCLUSIVES

Spacious living areas and incredible views immerse you in the beauty of your marine surroundings. Our new Suite Exclusives package helps make your voyage all the more memorable. [Learn more](#)

### SAVE 5% TRAVELING AS A GROUP

Save 5% when traveling as a group of eight or more people. Valid on voyage fares only and not applicable on extensions or airfare. Deposit, final payments, and cancellation policies for group travel vary from our regular policies. Valid for new bookings only, subject to availability, and may not be combined with other offers. Call for details.

### CELEBRATE LIFE'S MILESTONES

Celebrate a milestone with a group of eight or more and enjoy a special amenity package including: 5% savings on voyage fares, custom group photo, US\$150

shipboard credit for the group, and other special gifts. Milestone celebration to be communicated at time of booking.

### PAY BY DEBIT: EARN A \$100 ONBOARD CREDIT

The \$100 onboard credit offer is applied after the final payment and requires 85% of the cost of the voyage to be placed on a debit card. Maximum of one \$100 onboard credit per cabin. The \$100 onboard credit is a non-refundable, non-transferable credit that can be used for various onboard purchases such as global gallery and spa treatments. It has no cash value, cannot be refunded if not fully utilized, and will be forfeited if not fully redeemed by the end of the voyage. This offer is combinable with other offers. If the booking is altered or canceled, the onboard credit may be forfeited, and it cannot be transferred if the booking is moved to another guest. Lindblad Expeditions reserves the right to modify or cancel the offer without prior notice. Offer applies to Lindblad Expeditions' owned ships only. Offer valid only for Debit Cards issued in the United States for payments made from the United States.

### COMBINING OFFERS

Certain offers may be combinable, up to two savings opportunities, except where noted otherwise. For example, travel with a group of 8 or more on back-to-back expeditions, and take advantage of both savings.

## Included in price

All accommodations aboard ship or in hotels per itinerary; all meals as indicated in the itinerary, both aboard and onshore; beer, wine, cocktails, liquors and spirits aboard the ship (except certain premium brands which are available for purchase); hors d'oeuvres, 24-hour access to snacks, premium coffees and teas, non-alcoholic beverages, and filtered water; excursions and airport transfers, as indicated in the itinerary, as indicated in the itinerary; crew gratuities; exploration tools curated to destination, such as Zodiacs, kayaks, snowshoes and cross-country skis; guidance and company of our leading expedition staff; assistance by the National Geographic photographer and National Geographic-Lindblad Expeditions certified photo instructor; Basic Wi-Fi aboard ship; complimentary reusable water bottle; access to the OM System Photo Gear Locker; presentations by expedition staff and expert guest speakers; complimentary parka; complimentary reusable water bottle; onboard physician consultations; morning stretch classes and 24-hour access to exercise equipment; 24-hour access to lounges, observation decks, library, and other shared spaces; park and site entrance fees, special access permits, and port taxes. Unused services or items included in our programs are non-refundable.

## Not included in price

Airfare (except flights\* when indicated as included); pre- and post-expedition extensions; additional hotel nights (except when indicated as included); private transfers; laundry, spa treatments, enhanced and premium Wi-Fi plans aboard expedition fleet; phone services (except when indicated as included); travel protection plans; and passport, visa, and immigration fees.

\*Recommended flight costs include flight(s) that take place during the date range of your trip to transport travelers from one itinerary destination to another. This cost also includes ground transportation, luggage transfer, and airport assistance. If you prefer to arrange your own flights privately, have alternate means of transport, or wish to modify at a later time, please contact an Expedition Specialist at 1.833.400.0831

Additional costs associated with medical services outside onboard physician consultation.

For select voyages, completing a medical evaluation form with VIKAND is required. If you utilize your physician, VIKAND's processing fee for your documentation will be added to your National Geographic-Lindblad Expeditions invoice. If you utilize VIKAND's physicians, an additional charge will be due and payable directly to VIKAND.

## Travel protection plan

We strongly recommend our guests to take advantage of our Travel Protection Plan. This plan offers comprehensive coverage to protect you from cancellation fees, costs incurred due to trip delays/interruption, damage or loss of baggage, medical assistance, and evacuation during your travels. Our Travel Protection Plan is available for U.S. residents only, and may be purchased any time prior to final payment due date, Travel Protection premiums are non-refundable once plan is purchased. Learn more about our Travel Protection "Plus" Plan: <https://www.expeditions.com/terms-conditions/travel-protection-plan/>

## Cancellation policy

Review our cancellation policy: <https://www.expeditions.com/cancellation-policy/>