



North America, Caribbean, Under Sail &
13° 1' N 63° 2' W

Antigua to the British Virgin Islands: Hidden Cays and Azure Seas Aboard Sea Cloud II

Explore charming Caribbean islands aboard *Sea Cloud II*, a spectacular sailing vessel that blends modern-day comforts with old-world elegance. You'll sail with a true sense of adventure, as your captain and expedition team decide where to anchor to experience the best of this beautiful region. Discover the hidden natural and historical treasures of the region—from snorkeling in the British Virgin Islands and Anguilla to exploring St. Kitts' Brimstone Hill Fortress and Nelson's Dockyard, both UNESCO World Heritage sites. As we let the trade winds carry us across cool azure waters, lounge on the ship's Lido Deck and savor the almost-lost art of being under sail.

From
\$ 9,735 / per person
Does not include flights

	DATES Feb		DURATION 8 Days
	SHIPS <i>Sea Cloud II</i>		
	STARTS AT Philipsburg, Sint Maarten	→	 ENDS AT Philipsburg, Sint Maarten

Highlights

- ★ Experience the thrill of voyaging under sail on *Sea Cloud II*, watching an orchestrated frenzy of crew members going aloft in the web of riggings to hand-set 23 sails
- ★ Explore the natural wonders of the Caribbean, from remote cays and volcanic peaks to a variety of birds, reptiles, and sea turtles on tropical shores
- ★ Learn about the colonial history of tucked-away islands as you stroll through historic town squares and tour eighteenth-century forts
- ★ Snorkel among colorful reefs and shipwrecks from the days of buccaneers and brigands





Day by day

■ DAY 1

Philipsburg, Sint Maarten / Embark Ship

Embark *Sea Cloud II* late this afternoon. Make yourself at home, grab a glass of champagne and relax on deck, casting lines and toasting to your sail into the warm Caribbean evening.

Arrival Time: Arrive before 4:00 p.m. local time.

Arrival City: Philipsburg, Sint Maarten

Meals included: dinner

◇ DAYS 2-3

Exploring the British Virgin Islands

Your journey through the Caribbean begins as the crew of *Sea Cloud II* prepare the ship for the voyage ahead. As you finish breakfast, the crew will climb the towering rigging, setting a seemingly endless amount of sail—up to 29,600 square feet—by hand. Enjoy the play-by-play commentary from the captain, describing the crew's maneuvers, defining square-rigger terminology and sharing some lore of the sea. Sail the stunning Sir Francis Drake Channel en route to your first stop.

Go ashore in the British Virgin Islands, a group of over 60 islands that once harbored buccaneers and brigands. These lush, hilly islands, with their variety of coves, beaches and blue waters, provide us with options ranging from swimming and snorkeling, to hiking to beach combing. A beach BBQ is also on the agenda. In true Lindblad Expeditions-National Geographic style, you'll let the spirit of exploration guide us. You might stop at Jost Van Dyke to visit the island's lively White Bay, a wonderful place for a first snorkel or to imbibe at an iconic beach bar; or you may call on Norman Island, the inspiration for Robert Louis Stevenson's famed novel, *Treasure Island*.

Meals included: breakfast, lunch, dinner

◇ DAY 4

Anguilla / Under Sail

Known for its white-coral sand beaches and clear waters, Anguilla is the ideal island to experience the postcard-perfect essence of a Caribbean getaway. Take a dip in crystalline waters, snorkel vibrant reefs or venture out on a hike. Those preferring a more tranquil start to the day can relax on the island's pristine shores, settling into the laid-back, Caribbean pace of life.

Like yesterday, the captain and expedition leader will determine the best route for the day's activities. That might include Prickly Pear Cays, identified as an Important Bird Area by BirdLife International, where you'll search for a panoply of wildlife, including red-billed tropicbirds, brown boobies, laughing gulls and Caribbean elaenias, reptiles like Anguilla Bank or anole and sea turtles which frequent the shores of the cays. You'll have a chance to spot schools of goatfish, barracuda, angelfish, mangrove snapper and possibly even nurse sharks. Or you might sail to Cove Bay, where rain-filled salt ponds hold tiny wonders after a tropical shower. Here, look out for an array of birdlife, from great American egrets to gray plover, tropical king birds and pearly eyed thrashers plus snorkel and have a beverage at Smokey's Bar.

Under sail this afternoon, enjoy impeccable service and cuisine and learn more about the region with lectures from your expert staff. Up on the Lido Deck, settle into comfortable steamer chairs to lounge with a drink in hand and watch the crew adeptly navigate clear waters as you enjoy the warm, balmy breeze.

Meals included: breakfast, lunch, dinner

◇ DAY 5

Saint Kitts, Saint Kitts and Nevis / Under Sail

With a mountainous interior and rugged coastline of indented bays, St. Kitts is a striking island. A bit off the beaten path, the island has a very relaxed, local feel and is extremely accommodating to travelers. Spend the morning ashore exploring Brimstone Hill Fortress, a UNESCO World Heritage site, as well as Romney Manor Gardens and a Caribbean batik workshop. Back on board, enjoy a beautiful sunset and dinner.

Meals included: breakfast, lunch, dinner

◇ DAY 6

Saint Barthélemy / Under Sail

Ashore at St. Barthélemy, or St. Barts, you may forget you're in the Caribbean, thinking you've landed instead on a quaint Mediterranean island off the coast of France. The architecture, culture and cuisine are all influenced by France's colonial presence on the island. Gustavia, the main town, is a wonderful place to explore on foot. If you're feeling adventurous, rent a moped or hire a mini-moto (a very small, open-air taxi) to explore this tiny island. Or, choose to join the staff for a swim or snorkel at a welcoming beach.

You'll also have time to visit Fort Gustav, an historic fort built in 1787 by the Swedish that protected St. Bart's port from invasion. Explore the remains of a loosely bottled lighthouse, tanks and cannons, alongside your knowledgeable guides. Take in a stunning panoramic view of Gustavia and the port.

Back onboard, choose from a variety of ways to relax as the warm trade winds gently push us to your next destination. Unwind with a massage in the spa, watch the captain skillfully chart courses on the Bridge, attend a presentation from the field staff and local experts or peruse the library and read up on some of the islands you've explored along the way.

Meals included: breakfast, lunch, dinner

◇ DAY 7

Antigua, Antigua and Barbuda

Spend the morning exploring the restored eighteenth- and nineteenth-century buildings of Nelson's Dockyard. With help from the onboard Lindblad Expeditions-National Geographic certified photography instructor, capture incredible images of the sea of grand ships in the beautiful harbor, the historic sites and the unforgettable views at Shirley Heights. Or, soak up one last opportunity to snorkel in Caribbean waters at Deep Bay Beach where the wreck of *Andes* is found.

You'll also have the opportunity to hike to Fort Barrington, built in 1779 as a safeguard for St. John's Harbor. The fort played a significant role in the eighteenth century, serving as a signal station to alert forces throughout the island of impending attacks. It is also the only fort that saw military action in Antigua.

This afternoon gives us a final opportunity to see the crew work the sails and to luxuriate in the grandeur of *Sea Cloud II*. Enjoy the Captain's Farewell Dinner this evening, a festive way to end the voyage.

Meals included: breakfast, lunch, dinner

■ DAY 8

Philipsburg, Sint Maarten / Disembark Ship

Disembark *Sea Cloud II* this morning after breakfast for flights home.

Departure Time: Depart anytime after 12:00 p.m.

Departure City: Philipsburg, St. Maarten

Meals included: breakfast

Expedition

Philipsburg, Sint Maarten → Philipsburg, Sint
Maarten

2026 Departure Dates

Aboard *Sea Cloud II*

13 Feb	20 Feb			
--------	--------	--	--	--



Sea Cloud II

Guests

88

Cabins

44

Sail in style aboard a unique vessel that's a perfect combination of nostalgic elegance and modern comfort

Sea Cloud II is an alluring sailing vessel perfectly suited to travel the scenic shores of Italy and Croatia, exploring little-seen archipelagos and anchoring in small coves. A romantic tall ship with every modern comfort, Sea Cloud II combines the spaciousness and welcome amenities of a contemporary vessel with the grace and elegance of a square rigger. Inspired by the legendary 1930s yacht Sea Cloud, Sea Cloud II embodies the Golden Age of Sail; yet, it is modernly built, reflecting today's standards of luxury. From marble bathrooms and elegant furnishings to televisions and climate controls, comfortable cabins have expected amenities.

Expansive outdoor decks and viewing areas provide ideal vantage points for appreciating the scenery of the Mediterranean and the Adriatic, and for savoring the romance of being under sail. Al fresco dining—accompanied by a pianist—is offered on the Lido Deck where shorts and deck shoes are the norm. While the ship's indoor spaces, like a sizeable dining room and lounge, are suitable for formality, there's a lighthearted delight in enjoying them in casual dress. Guests can also take advantage of the spa that offers a sauna, fitness area, and massage therapy.

Expect the hallmarks of a Lindblad Expeditions-National Geographic voyage, including expert field staff like historians and certified photo instructors (CPIs); top-quality dining that includes locally sourced ingredients and regional specialties; evening Recaps that review the day and set the stage for the next; experienced service; and an open Bridge policy that invites guests to observe the workings of a ship under sail.



Cabin Categories

Category 1S

Cabin Deck: #207-210

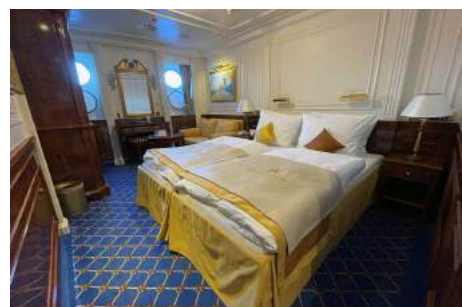
These 236 sq. ft. outside-facing cabins, located on the Cabin Deck, have a double bed (which can be separated into two single beds for cabin share program) and two portholes. Cabin features include a couch, television, small table, dressing table with mirror, a closet, two nightstands, minibar, safe, temperature controls, and telephone. The beautiful marble bathroom is equipped with a shower.



Category 1

Cabin Deck: #207-210

These 236 sq. ft. outside-facing cabins, located on the Cabin Deck, have a double bed (which can be separated into two single beds) and two portholes. Cabin features include a couch, television, small table, dressing table with mirror, a closet, two nightstands, minibar, safe, temperature controls, and telephone. The beautiful marble bathroom is equipped with a shower. Note: Solo occupancy cabins are available in Category 1.



Category 2

Cabin Deck: #211-212, 214-217, 224-231

These 247 sq. ft. outside-facing cabins, located on the Cabin Deck, have a double bed (which can be separated into two single beds) and two portholes. Cabin features include a couch, television, small table, dressing table with mirror, a closet, two nightstands, minibar, safe, temperature controls, and telephone. The beautiful marble bathroom is equipped with a shower. Note: Some Category 2 cabins have connecting doors.



Category 3

Cabin Deck: #218-223

These 258 sq. ft. outside-facing cabins, located on the Cabin Deck, have a double bed (which can be separated into two single beds) and three portholes. Cabin features include two chairs, a small table, television, dressing table with mirror, writing desk, two closets, two nightstands, minibar, safe, temperature controls, and telephone. The beautiful marble bathroom is equipped with a shower.



Category 4

Promenade Deck: #301, 302

These 249 sq. ft. outside-facing cabins, located on the Promenade Deck, have a double bed (which can be separated into two single beds) and three large panorama windows. Cabin features include two chairs, a small table, television, writing desk/dressing table with mirror, closets, two nightstands, minibar, safe, temperature controls, and telephone. The beautiful marble bathroom is equipped with a shower.



Category 5

Promenade Deck: #303, 304

These outside-facing suites, located on the Promenade Deck, have a double bed (which can be separated into two single beds) and three large panorama windows. #303 is 271 sq. ft. and #304 is 265 sq. ft. Suite features include an electric fireplace, separate sitting area with two large chairs and large table, walk-in closet, television, dressing table with mirror, two nightstands, minibar, safe, temperature controls, and telephone. The beautiful marble and gold-fitted bathroom is equipped with shower bathtub and marble washbasin.



Category 6

Promenade Deck: #305-312, 314-319

These 281 sq. ft. outside-facing suites, located on the Promenade Deck, have a double bed (which can be separated into two single beds) and three large panorama windows. Suite features include an electric fireplace, separate sitting area with two large chairs and large table, walk-in closet, television, dressing table with mirror, two nightstands, minibar, safe, temperature controls, and telephone. The beautiful marble and gold-fitted bathroom is equipped with shower bathtub and marble washbasin.



Category 7

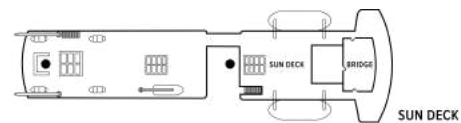
Lido Deck: #401, 402

These 335 sq. ft. outside-facing suites, located on the Lido Deck, have a double four-poster bed and four large panorama windows. Cabin features include an electric fireplace, separate sitting area with a couch, two large chairs and large table, walk-in closet with four large wardrobes, television, dressing table with mirror, two nightstands, minibar, safe, temperature controls, and telephone. The large, beautiful marble and gold-fitted bathroom is equipped with separate shower and bathtub, and marble washbasin.



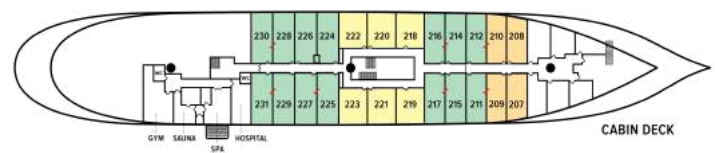
Deck Plans

Sun Deck



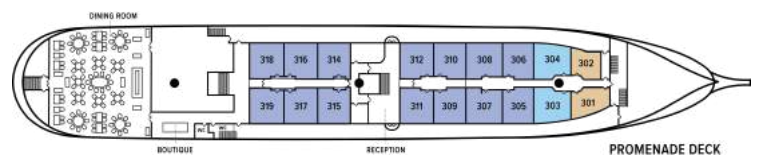
Cabin Deck

- Category 1S
- Category 1
- Category 2
- Category 3



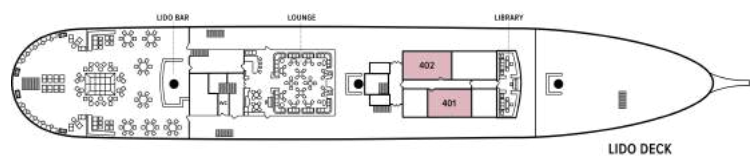
Promenade Deck

- Category 4
- Category 5
- Category 6



Lido Deck

- Category 7



Ship amenities

Well-Appointed Cabins

All cabins are outside-facing and have portholes or windows, a marble bathroom, minibar, ample storage space, and period furnishings. Some include special features like a separate sitting area, walk-in dressing area, canopy bed, or electric fireplace.

The Thrill of Being Under Sail

A three-masted barque with 23 sails, Sea Cloud II is sailed by hand as often as conditions permit, starting with a full description of the sailing process the first morning on board and then as much as possible during the voyage. This tradition carried out by a skilled crew is an art form that contributes to the romance of being at sea.



Welcome Wellness Amenities

Unwind in the spa with a sauna or massage. A fitness room includes a treadmill, stationary bicycle, rowing machine, elliptical trainer, and weights.

A Choice of Indoor Public Spaces

An elegant lounge is a perfect venue for a nightly cocktail while the light-filled library is a lovely spot to sit down with a book about the region. Guests are welcome on the Bridge (conditions permitting) to learn how Sea Cloud II is navigated and sailed.



Inviting Outdoor Spaces

Outdoor spaces like the Lido and Promenade Decks invite relaxation in the open air. Feel the balmy breezes as idyllic scenery passes. Stretch out in a recliner and enjoy the ease of travel under sail; or enjoy a refreshment under the shade of a canopy.

Quality Dining

Dinners are served in single seating in the spacious restaurant, where breakfasts are also served buffet style, with eggs to order. Lunches, afternoon tea, and some special meals are more "at leisure" on the Lido Deck. All food and drink on board focus on Continental cuisine and local specialties.

Noteworthy Features

The ship's interiors have the nostalgic feel of a luxurious 1930s yacht but boast contemporary features such as a helpful reception desk, wide passageways, and a central staircase. During your voyage, we will cover your bar tab aboard the ship (excluding certain super-premium brands).

Special Offers

CELEBRATE LIFE'S MILESTONES

Celebrate a milestone with a group of eight or more and enjoy a special amenity package including: 5% savings on voyage fares, custom group photo, US\$150 shipboard credit for the group, and other special gifts. Milestone celebration to be communicated at time of booking.

10% OFF BACK-TO-BACK VOYAGES

Save 10% on consecutive departures, applicable on voyage fares only and not valid on extensions or airfare. Valid for new bookings only, subject to availability, and may not be combined with other offers. Call for details.

COMBINING OFFERS

Certain offers may be combinable, up to two savings opportunities, except where noted otherwise. For example, travel with a group of 8 or more on back-to-back expeditions, and take advantage of both savings.

SAVE 5% TRAVELING AS A GROUP

Save 5% when traveling as a group of eight or more people. Valid on voyage fares only and not applicable on extensions or airfare. Deposit, final payments, and cancellation policies for group travel vary from our regular policies. Valid for new bookings only, subject to availability, and may not be combined with other offers. Call for details.

Included in price

All accommodations aboard ship per itinerary; all meals as indicated in the itinerary, both aboard and onshore; beer, wine, cocktails, liquors and spirits aboard the ship (except certain premium brands which are available for purchase); basic Wi-Fi (5GB per person); hors d'oeuvres, 24-hour access to snacks, premium coffees and teas, non-alcoholic beverages, and filtered water; excursions and airport transfers to and from recommended flights, as indicated in the itinerary; crew gratuities; exploration tools curated to destination, such as snorkeling equipment (including wetsuits, masks, and fins); guidance and company of our leading expedition staff; assistance by the Lindblad Expeditions-National Geographic certified photo instructor; presentations by expedition staff and expert guest speakers; complimentary reusable water bottle; onboard physician consultations; 24-hour access to shared spaces; park and site entrance fees, special access permits, and port taxes. Unused services or items included in our programs are non-refundable.

Not included in price

Airfare (except flights when indicated as included); pre- and post-expedition extensions; additional hotel nights (except when indicated as included); private transfers; laundry, and phone services (except when indicated as included); travel protection plans; and passport, visa, and immigration fees.

Additional costs associated with medical services outside onboard physician consultation.

Travel protection plan

We strongly recommend our guests to take advantage of our Travel Protection Plan. This plan offers comprehensive coverage to protect you from cancellation fees, costs incurred due to trip delays/interruption, damage or loss of baggage, medical assistance, and evacuation during your travels. Our Travel Protection Plan is available for U.S. residents only, and may be purchased any time prior to final payment due date, Travel Protection premiums are non-refundable once plan is purchased. Learn more about our Travel Protection "Plus" Plan: <https://www.expeditions.com/terms-conditions/travel-protection-plan/>

Cancellation policy

Review our cancellation policy: <https://www.expeditions.com/cancellation-policy/>