







Patagonia & South America
 53° 57' S 71° 19' W

Patagonia: Chilean Fjords and Argentina's Staten Island

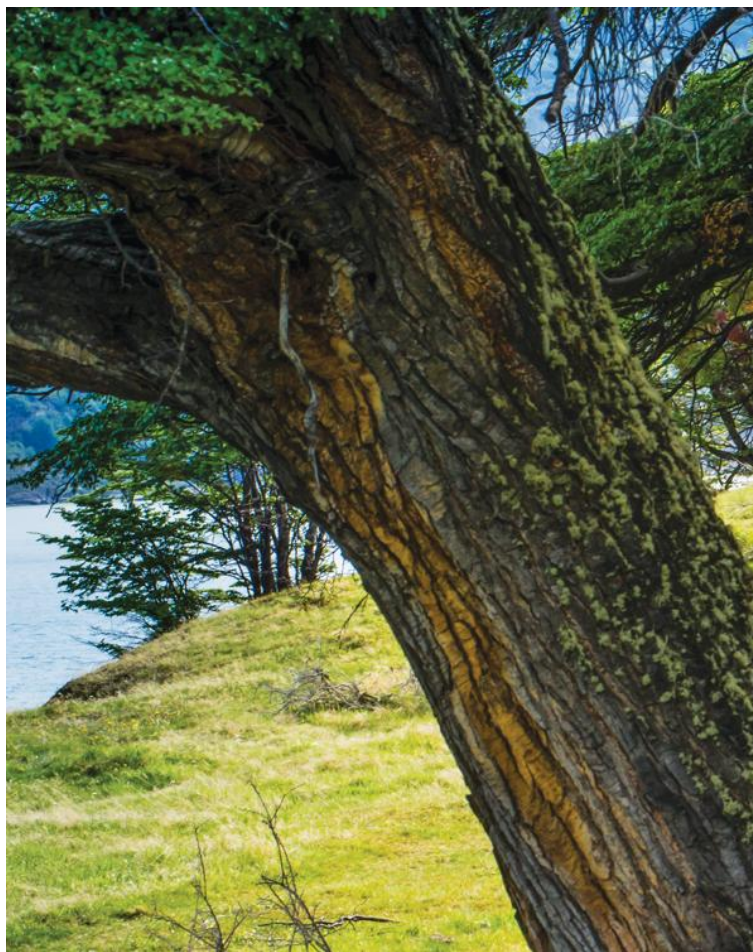
Discover the fjords, glaciers, and panoramic vistas that make Chilean Patagonia one of the most lauded nature destinations on Earth. Venture by Zodiac and kayak to explore Chile's deeply indented coastline. Glide into fjords and inlets beneath walls of blue ice, hike on shore with naturalists, and watch for elephant seals, Magellanic penguins, and Andean condors. Explore the seldom-seen natural splendors of Karukinka Natural Park and Isla de los Estados (Staten Island) where we have special access to nature reserves filled with stunning landscapes.

From
\$ 14,000 / per person
 Does not include flights

 DATES Feb	 DURATION 10 Days
 SHIPS <i>National Geographic Orion</i>	
 STARTS AT Puerto Natales, Chile	  ENDS AT Ushuaia, Argentina

Highlights

- ★ Venture through wildlife reserves not easily accessible to the public, including Karukinka Natural Park in Tierra del Fuego
- ★ Kayak and Zodiac cruise the breathtaking Chilean fjords that are only accessible by expedition ship
- ★ See massive glaciers, dramatic fjords, and soaring snow-covered peaks while watching for Magellanic penguins, sea lions, and more
- ★ Transit the legendary Beagle Channel and look out for shearwater, petrels, albatrosses, and more





Day by day

■ DAY 1

Santiago, Chile

Arrive in Santiago, the capital city of Chile. Set against the Andes and Chilean Coastal mountain ranges, Santiago is home to half of the country's population. Transfer from the airport to the Ritz-Carlton, Santiago (or similar).

Arrival Time: Arrive before 11:00 a.m. local time.

Arrival City: Santiago, Chile

◇ DAY 2

Punta Arenas / Puerto Natales / Embark Ship / Kirke or White Narrows

Join the recommended flight from Santiago to Punta Arenas, Chile's southern gateway to Patagonia; transfers to the airport and luggage assistance will be provided. From there, drive to the outpost of Puerto Natales and embark. Be on deck to look for wildlife as your Captain guides you through the Kirke or White Narrows—always a challenge to navigate because of the powerful currents that flow through its pinch points.

Meals included: breakfast, lunch, dinner

◇ DAYS 3-4

Chilean Fjords

Today and during the following days, you'll be treated to the spectacular features of an active glaciated landscape with hanging valleys and tributary glaciers. This region was navigated by Ferdinand Magellan's expedition, and it took most of November 1520 for his ships to find a way through the channels that lie between the continental mainland and Tierra del Fuego to the south. The crew will look to make a first stop in

the extensive maze of channels and islands of the Chilean fjords, where you may go out by Zodiac and kayak.

Meals included: breakfast, lunch, dinner

◇ DAY 5

Tierra del Fuego / Karukinka Natural Park

Tierra del Fuego is one of Patagonia's crown jewels. You'll visit its newest and largest protected area: Karukinka Natural Park. Established in 2004 through a gift from Goldman Sachs, Karukinka is one of the largest donations ever made for conservation. National Geographic-Lindblad Expeditions is thrilled to have special permission from the Wildlife Conservation Society to visit this private reserve, which spans 1,160 square miles and harbors the endangered culpeo fox, Andean condors, albatrosses, grebes, petrels, fulmars, shearwaters and many other kinds of wildlife. You might explore Jackson Bay, backed by a skyline of rugged mountains, and look for wildlife including black-browed albatrosses, which nest on one of the nearby small islands. You may walk a trail to a lovely waterfall and look for elephant seals resting on not only the beach but also high in the grass meadows and even in the small river draining the valley inland.

Meals included: breakfast, lunch, dinner

◇ DAYS 6-7

Chilean Fjords / Beagle Channel

Experience more stunning wilderness as you explore the fjords and glaciers of the region by Zodiac, kayak and on foot. Take Zodiacs out to explore these protected waters and rugged shores, keeping watch for the shearwaters, petrels,

albatrosses and many other birds that inhabit this otherworldly realm.

Sail the Beagle Channel and look to hike and kayak one of the wild areas in this region of beech forests, mountains and rivers. This southernmost corner of the South American continent is also home to Cape Horn, the island at the convergence of the Atlantic and Pacific Oceans—famously difficult waters that, throughout the centuries, have been the graveyard of many ships from the time before the Panama Canal.

Meals included: breakfast, lunch, dinner

◇ DAYS 8-9

Isla de Los Estados (Staten Island), Argentina

National Geographic-Lindblad Expeditions has been given special permission to visit extraordinary Staten Island, and this ship is one of the only expedition ships ever allowed here. It is a place of superlatives, barely touched in recent decades and visited primarily by a few scientists and the staff of the tiny naval observatory. The island was named by Dutch explorers in 1615. Its mountainous, forested landscapes and rugged fjords are beautiful, and there is much to discover here. The exact schedule remains flexible to take best advantage of conditions. Search for southern rockhopper and Magellanic penguins, other waterbirds, fur seals and sea lions. You may also look for otters on your landings ashore, and you'll see the replica of the 1884 San Juan de Salvamento "lighthouse at the end of the world," which inspired Jules Verne's novel by the same name. There are chances to walk in the southern beech forests. These days are bound to stand out as a unique chance to explore a very remote place.

Meals included: breakfast, lunch, dinner

■ DAY 10

Ushuaia, Argentina / Disembark Ship

/ Santiago, Chile

Disembark in Ushuaia, the southernmost city in the world. Fly to Santiago and connect with your flight home.

Departure Time: Depart after 9:00 p.m. local time.

Departure City: Santiago, Chile

Meals included: breakfast

Southbound

Puerto Natales, Chile → Ushuaia, Argentina

2027 DEPARTURE DATES

Aboard *National Geographic Orion*

23 Feb				
--------	--	--	--	--

Alternative Routes

Visit Expeditions.com for more information.

2027 Departure Dates

15 Feb



National Geographic Orion

GUESTS

102

CABINS

53

Joining the Lindblad fleet in 2013, the state-of-the-art *National Geographic Orion* serves as a luxurious base camp for voyages to the far-flung corners of the planet.

Built in Germany by the Cassens shipyard, the 102-guest *National Geographic Orion* was created with a high ice class to be able to venture safely into polar regions. A ship of her size is seldom built with such ice-cutting ability, which makes her a rarity. She is yacht-scale, yet rugged enough to venture far afield, making her a perfect addition to the Lindblad fleet, which she joined in 2013. Her size and nimbleness offer the perfect combination of safety and liberty to voyage untrammelled locations. In fact, *National Geographic Orion* currently holds the distinction of having sailed further south than any other Lindblad vessel.

Her menu, created by famed Australian chef, Serge Dansereau, owner of Sydney's acclaimed Bather's Pavilion restaurant, enormously popular with *National Geographic Orion's* guests, so impressed Sven Lindblad, that Serge, a chef-owner who shared the Lindblad commitment to serving local and sustainable food, was enlisted to design the dining program for the entire National Geographic-Lindblad Expeditions fleet.

National Geographic Orion is gracious and intimate, with a rewarding, almost clubby feeling. Of her many amenities and features, the most appealing is her outside deck space which beckons in the balmy reaches of the Pacific, and on those days in Antarctica when the midnight sun and the spectacle of the ice makes going indoors, let alone going to bed, impossible.



Cabin Categories

Category 1

MAIN DECK #316, 318-321

Cabins feature a luminous oval window and configurable beds: two single beds that can be converted to a queen. An armchair, reading lamps, a flat screen TV, two bedside tables, coffee table, desk and climate controls complete the amenities. Marble bathrooms are generously sized and include a spacious shower stall with a glass door.



Category 2

MAIN DECK #302-312, 314, 315, 317

Cabins feature a luminous oval window and configurable beds: two single beds that can be converted to a queen. An armchair, reading lamps, a flat screen TV, bedside table, coffee table, desk and climate controls complete the amenities. Marble bathrooms are generously sized and include a spacious shower stall with a glass door.



Category 3

UPPER DECK #401-412, 414-419

These suites feature a sitting area with a large window, a sofa—except slightly smaller #401 & #402—an armchair or two, writing/laptop desk, reading lamps, coffee table, flat screen TV, bedside table and climate controls. Beds are configurable (call for details). Marble bathrooms include a spacious shower stall with a glass door.



Category 4

BRIDGE DECK #511, 515

These two suites feature separate sleeping and sitting areas, with a chair and armchair, coffee table, and a two-cushion sofa facing an expansive window. Beds are configurable (call for details). Ample storage, reading lamps, a flat screen TV and climate controls complete the amenities. Marble bathrooms are generously sized and include a spacious shower stall with a glass door.



Category 5

BRIDGE DECK #501, 503-506, 508

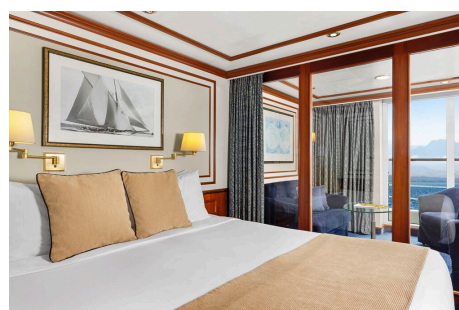
These spacious suites feature open living areas and sliding glass doors opening to a shared French balcony. Beds are configurable (call for details). A separate sitting area with armchairs and a sofa, a writing/laptop desk, coffee table, well-placed reading lamps, a flat screen TV and climate controls complete the decor. Marble bathrooms are generously sized and include a spacious shower stall with a glass door.



Category 6

BRIDGE DECK #502, 507, 509*, 510

These large, elegant suites feature a French balcony, except for #509 which has double windows. Each provides a separate living area with a sofa and two armchairs, coffee table, except for #502, which uniquely offers a 'soaking tub with a view' in addition to a shower stall and expansive vanity. All cabins have reading lamps, a flat screen TV and climate controls. Marble bathrooms are generously sized and include a spacious shower stall with a glass door.



Category 1 Solo

MAIN DECK #301, 322, 323

These solo cabins feature a window or two portholes, a queen-size bed, except for #301 which has a double bed, writing desk and chair, climate controls, reading lamps, coffee table, two bedside tables and a TV. Marble bathrooms are generously sized and include a roomy shower stall with a glass door.



Category 3 Solo

UPPER DECK #512

This solo suite features two single beds and two large windows, plus two armchairs and a small table, reading lamps, coffee table a flat screen TV and climate controls. The marble bathroom is generously sized and includes a spacious shower stall with a glass door.



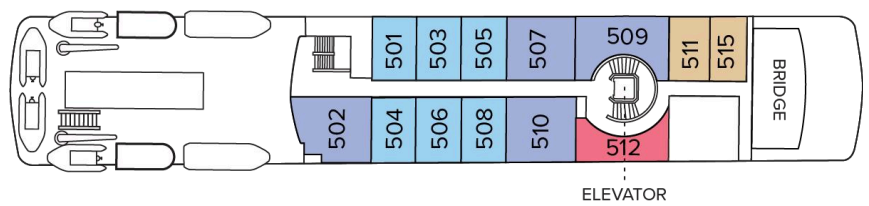
Deck Plans

Observation Deck



Bridge Deck

- Category 4
- Category 5
- Category 6
- Category 3 Solo



Upper Deck

- Category 3



Main Deck

- Category 1
- Category 2
- Category 1 Solo



Expedition Deck



Ship Amenities

Public Areas

Reception; two dining areas; lounge with bar and state-of-the-art presentation facilities; OM System photo locker; sundeck with a whirlpool hot tub that doubles as a plunge pool in warm climates; observation lounge and library; global gallery; a marina platform; plus open access to the Bridge, the Captain, officers and on-duty wildlife spotters.

Meals

Meals are served in the dining room, or weather permitting, the outdoor café, at a single seating with unassigned tables for an informal atmosphere and easy mingling. Menus feature sustainable choices, local where possible.

Cabins

All cabins face outside with windows or portholes, private bathroom, and climate controls. Cabins feature a coffee table, lounge chair, desk, phone, TV with on demand entertainment, multiple outlets and USB, mini refrigerator, and safe. Luxury linens and pillows. Botanically inspired shampoo, conditioner, shower gel and lotion are all available in cabin bathrooms, as well as an Expedition Essential Kit. Hair dryers, complimentary insulated water bottles and a National Geographic Atlas are available in each cabin.

Expedition Equipment

Zodiac landing craft, a fleet of double kayaks, a crow's nest camera, a hydrophone, underwater video cameras, video microscope and an ROV. Plus, for South Pacific voyages: snorkeling gear for all guests, scuba gear for a number of pre-qualified guests, stand-up paddleboards, glass-bottom Zodiac and splash-cam.

Special Features

A full-time doctor, undersea specialist, National Geographic photographer and National Geographic-Lindblad Expeditions certified photo instructor. A central staircase and elevator reach all decks. Enjoy daily teatime and the smoothies served after the sunrise stretch sessions on the sundeck in Polynesia.

Wellness

A fitness center, LEXspa treatment room and sauna, staffed by wellness specialists.

Self-Disinfecting Ships

ACT Clean Coat™ is a light-activated, self-disinfecting cleaning process that continuously breaks down viruses, bacteria, mold, and airborne allergens across all ship surfaces. This non-toxic, chemical-free system also helps us save over one million gallons of water each year in our cleaning procedures.

Special Offers

SUITE EXCLUSIVES

Spacious living areas and incredible views immerse you in the beauty of your marine surroundings.

Our new Suite Exclusives package helps make your voyage all the more memorable. [Learn more](#)

SAVE 5% TRAVELING AS A GROUP

Save 5% when traveling as a group of 8 or more people. Valid for new bookings only on select departures, subject to availability, not applicable on extensions, and may not be combined with other offers. Call for details.

CELEBRATE LIFE'S MILESTONES

Celebrate a milestone with a group of eight or more and enjoy a special amenity package including: 5% savings on voyage fares, custom group photo, US\$150 shipboard credit for the group, and other special gifts. Milestone celebration to be communicated at time of booking.

PAY BY DEBIT: EARN A \$100 ONBOARD CREDIT

The \$100 onboard credit offer is applied after the final payment and requires 85% of the cost of the voyage to be placed on a debit card. Maximum of one \$100 onboard credit per cabin. The \$100 onboard credit is a non-refundable, non-transferable credit that can be used for various onboard purchases such as global gallery and spa treatments. It has no cash value, cannot be refunded if not fully utilized,

and will be forfeited if not fully redeemed by the end of the voyage. This offer is combinable with other offers. If the booking is altered or canceled, the onboard credit may be forfeited, and it cannot be transferred if the booking is moved to another guest. Lindblad Expeditions reserves the right to modify or cancel the offer without prior notice. Offer applies to Lindblad Expeditions' owned ships only. Offer valid only for Debit Cards issued in the United States for payments made from the United States.

COMBINING OFFERS

Certain offers may be combinable, up to two savings opportunities, except where noted otherwise. For example, travel with a group of 8 or more on back-to-back expeditions, and take advantage of both savings.

INCLUDED IN PRICE

All accommodations aboard ship or in hotels per itinerary; all meals as indicated in the itinerary, both aboard and onshore; beer, wine, cocktails, liquors and spirits aboard the ship (except certain premium brands which are available for purchase); hors d'oeuvres, 24-hour access to snacks, premium coffees and teas, non-alcoholic beverages, and filtered water; excursions and airport transfers, as indicated in the itinerary, as indicated in the itinerary; crew gratuities; exploration tools curated to destination, such as Zodiacs and kayaks; guidance and company of our leading expedition staff; assistance by the National Geographic photographer and National Geographic-Lindblad Expeditions certified photo instructor; Basic Wi-Fi aboard ship; complimentary reusable water bottle; access to the OM System Photo Gear Locker; presentations by expedition staff and expert guest speakers; complimentary reusable water bottle; onboard physician consultations; morning stretch classes and 24-hour access to exercise equipment; 24-hour access to lounges, observation decks, library, and other shared spaces; park and site entrance fees, special access permits, and port taxes. Unused services or items included in our programs are non-refundable.

NOT INCLUDED IN PRICE

Airfare (except flights* when indicated as included); pre- and post-expedition extensions; additional hotel nights (except when indicated as included); private transfers; laundry, spa treatments, enhanced and premium Wi-Fi plans aboard expedition fleet; phone services (except when indicated as included); travel protection plans; and passport, visa, and immigration fees.

*Recommended flight costs include flight(s) that take place during the date range of your trip to transport travelers from one itinerary destination to another. This cost also includes ground transportation, luggage transfer, and airport assistance. If you prefer to arrange your own flights privately, have alternate means of transport, or wish to modify at a later time, please contact an Expedition Specialist at 1.833.400.0831

Additional costs associated with medical services outside onboard physician consultation.

TRAVEL PROTECTION PLAN

We strongly recommend our guests to take advantage of our Travel Protection Plan. This plan offers comprehensive coverage to protect you from cancellation fees, costs incurred due to trip delays/interruption, damage or loss of baggage, medical assistance, and evacuation during your travels. Our Travel Protection Plan is available for U.S. residents only, and may be purchased any time prior to final payment due date, Travel Protection premiums are non-refundable once plan is purchased. Learn more about our Travel Protection "Plus" Plan: <https://www.expeditions.com/terms-conditions/travel-protection-plan/>

CANCELLATION POLICY

Review our cancellation policy: <https://www.expeditions.com/cancellation-policy/>