







Arctic, Greenland, Canada & Iceland
 64° 8' N 21° 56' W

Arctic Eclipse Odyssey: Iceland, Greenland and Canada

Sail remote Arctic waters, from Iceland’s volcanic shores to Greenland’s towering glaciers and onward to Canada’s wild, windswept coast, slipping into hidden fjords along the way to encounter extraordinary wildlife and sculpted icebergs. On August 12, 2026, gather on deck for the awe-inspiring spectacle of a total solar eclipse, as the Moon’s shadow sweeps across the Arctic and transforms this voyage into a once-in-a-lifetime journey. Your captain will position the ship within the path of totality (weather permitting), while naturalists and National Geographic Experts interpret the phenomenon—ensuring the experience is as enlightening as it is unforgettable.

From
£24,875 / per person
 Does not include flights

| | |
|---|---|
|  DATES Aug |  DURATION 15 Days |
|  SHIPS <i>National Geographic Explorer</i> | |
|  STARTS AT Reykjavik, Iceland |   ENDS AT St. John’s, Newfoundland |

Minimum Age Requirement: Any children booked on Antarctic or Arctic voyages must be at least 4 years old at time of embarkation.

Note: the 2026 sailing is 16 days to allow for viewing of the total solar eclipse.

Highlights

- ★ Witness a total solar eclipse on the 2026 voyage as we navigate to the best position within the path of totality (conditions permitting)
- ★ Take in picturesque views as we sail through dramatic fjords and past glaciers and ice floes in southern Greenland
- ★ Step back in time at Viking ruins, like Erik the Red's farm in Greenland and the 11th-century village at L'Anse aux Meadows, a UNESCO World Heritage site in Canada
- ★ Navigate across the Denmark Strait, home to the world's largest underwater waterfall, and the Labrador Sea, known for its nutrient-rich cold water currents





Day by day

■ DAY 1

Reykjavík, Iceland / Embark Ship

Arrive in Reykjavík, the world's northernmost capital, which lies just below the Arctic Circle. Transfer from the airport to the city and spend the day exploring at your own pace. Check in with the hospitality desk this afternoon before embarking the ship.

Meals included: dinner

◇ DAY 2

Flatey Island

Explore Iceland's western frontier, visiting Flatey Island, a trading post for many centuries turned sleepy summer islet. Walk around the charming little hamlet that has survived, and hike across trails that trace the cliffs past a seasonal seabird population.

Meals included: breakfast, lunch, dinner

◇ DAYS 3-4

Crossing the Denmark Strait

Sail away from the Westfjords of Iceland and across the Denmark Strait. Connecting the Arctic and Atlantic Ocean, the Strait is home to the world's largest waterfall, caused by powerful currents and glaciers. Listen to talks by experts, relax with a book in the lounge or the observation deck and keep an eye out for wildlife as the ship sails across the continental shelf.

A total solar eclipse will occur in the region on August 12, 2026. The ship will navigate to the best position within the path of totality to witness this rare, natural wonder (conditions permitting).

Meals included: breakfast, lunch, dinner

◇ DAY 5

Prins Christian Sund, Greenland

Sail into Prins Christian Sund, which cuts into the southern tip of Greenland, passing between soaring pinnacles and glaciers, allowing the ship to sail through the sheltered waters of this dramatic landscape. Glimpse hanging glaciers through the fjords that stretch back to the Greenlandic Ice Sheet and keep an eye out for marine and bird life in these sheltered waters.

Meals included: breakfast, lunch, dinner

◇ DAYS 6-7

Southern Greenland Fjords

Home to some of the best preserved ruins of the Viking era in Greenland, Qaqortoq and Qassiarsuk will provide you with two days of insight, culture and local interactions. Walk through the ruins of Bratthlid, Erik the Red's farm, visiting replicas of the church and the family's longhouse. Explore the same shores from which their son, Leif Eriksson, launched the first voyages to North America—500 years before Columbus.

Visit the unofficial capital of southern Greenland at Qaqortoq, with just over 3,200 residents. The colonial influence is visible throughout the town, with houses painted in primary colors and architecture dating back to the 1700's. Stroll through the town square and visit the museum, where Greenlandic kayaks, hunting equipment and local art and handicrafts are on display. Finally, walk through the walls of Hvalsey church, located in the fjords behind Qaqortoq, the best preserved Norse ruins in all of Greenland.

Meals included: breakfast, lunch, dinner

◇ DAYS 8-9

At Sea / Crossing the Davis Strait

Spend time on the bow of the ship watching for whales, polar bears and other wildlife; enjoy the ship's amenities; edit your photos alongside photography experts; and attend expert-led talks about the Arctic as the ship navigates the massive icebergs of Davis Strait on the way to Baffin Island.

Meals included: breakfast, lunch, dinner

◇ DAYS 10-13

Exploring the Labrador Coast, Canada

Spend four days tracing the beautiful, wild coast of Labrador, exploring on foot and by kayak and Zodiac. As the ship weaves its way through the Lower Savage islands, you'll keep a watchful eye for the polar bears that call these islands home and use Zodiacs as safe havens to experience their environment firsthand. Watch for peregrine falcons and other birds soaring over the rocky shorelines of the spectacularly narrow Mugford Tickle and take in the impressive sight of the 4,000-foot-high Kaumajet Mountains. Continue to scenic Battle Harbour to discover the reconstructed 19th-century buildings and legacy of this historic fishing village.

Meals included: breakfast, lunch, dinner

◇ DAY 14

L'Anse aux Meadows

In the 1960s, the remains of a Viking village established in the 11th century were excavated at L'Anse aux Meadows, now a UNESCO World Heritage site. Walk among the Norse ruins and reconstructed sod huts and learn the saga of the Vikings in North America, who arrived here nearly 500 years before the explorations of Columbus.

Meals included: breakfast, lunch, dinner

◇ DAY 15

Eastern Newfoundland

Cliffs, fjords and beaches grace the eastern coast of Newfoundland. Hike, kayak or explore by Zodiac with your experts amid this stunning scenery, and keep an eye out for migrating birds and whales.

Meals included: breakfast, lunch, dinner

■ DAY 16

St. John's, Newfoundland / Disembark Ship

Disembark in St. John's and transfer to the airport for flights home.

Meals included: breakfast

Expedition

Reykjavík, Iceland → St. John's, Newfoundland

2026 DEPARTURE DATES

Aboard *National Geographic Explorer*

| | | | | |
|--------|--|--|--|--|
| 09 Aug | | | | |
|--------|--|--|--|--|



National Geographic Explorer

GUESTS

148

CABINS

81

Built to handle deep swells and towering waves, the *National Geographic Explorer* lends herself to globe-spanning travel and a dedication to curiosity and wonder.

Originally constructed for service along Norway's coast as part of the famed Hurtigruten, or Coastal Express, she ferried passengers among the fjords of this iconic coast in conditions that could deteriorate into heavy seas in a matter of minutes. She had to be able to handle deep swells and towering waves—and have a high degree of maneuverability. Those traits, and an ideal size, made her a natural choice for addition to the Lindblad fleet.

The plans to completely rebuild her drew on 50 years of pioneering expedition history and expertise. *National Geographic Explorer* was equipped with an ice-strengthened hull and advanced navigation equipment for polar expeditions; a roster of tools for exploration; and a well-appointed interior with vast expanses of glass for an unprecedented connection to the environment. Her interior and exterior design embodied the Lindblad expedition ethos—the privilege of wildness and the luxury of comfort.

For many guests she remains their paradigm of an expedition ship. She is devoted to exploration—from her Welcoming Bridge, and the Chart Room below it where you can tuck in to warm up with a hot chocolate, to her high-perched Observation deck with its aqueous light and compelling 24/7 views. Even the art on the walls— from the Hurley prints of Shackleton’s expedition to the stunning National Geographic photos— tells an uber- narrative of globe-spanning travel and a dedication to curiosity and wonder.

National Geographic Explorer is a state-of-the-art expedition ship. She is a fully stabilized, ice-class vessel, with an ice-reinforced hull, enabling her to navigate polar passages while providing exceptional comfort.



Cabin Categories

Category 1

MAIN DECK #301-308

Cabins feature one or two portholes. Most cabins feature two single beds that can be converted to a queen. Cabins #301-306 feature one queen-sized bed. All cabins feature a writing desk, floor length mirror, reading lamps, well-appointed bathrooms with a roomy glass-wall shower, and a TV.



Category 2

MAIN DECK #317-320, 335-336

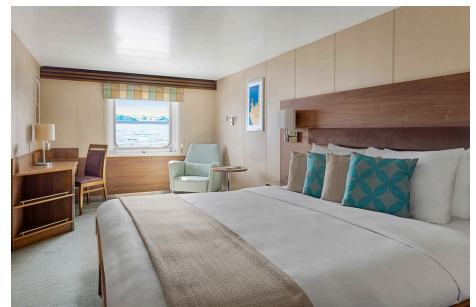
Cabins feature two single beds (some can convert to a queen-sized bed), and one large window. They offer a writing desk, floor length mirror, reading lamps, sitting chair, well-appointed bathrooms with a roomy glass-wall shower, and a TV.



Category 3

MAIN DECK #313-316, 321-328, 337-340, 342, 344, 348, 350

Cabins feature two single beds (some can convert to a queen-sized bed), one large window, and two sitting chairs and a small table and ample storage. They have a writing desk, floor length mirror, reading lamps, well-appointed bathrooms with a roomy glass-wall shower, and a TV. Cabins 341 & 343 have a sofa bed for a triple.



Category 4

UPPER DECK #201-202, 204-207, 210, 212, 217, 226, 228

Cabins feature two single beds and at least one large window. All cabins can convert between two single beds to a queen, except Cabins 217, 226 and 228, which feature one queen-size bed only. All cabins feature climate controls, sitting chairs and a TV. Bathrooms are also generously sized with a roomy, glass-walled shower stall.

VERANDA DECK #103-104, 107-108

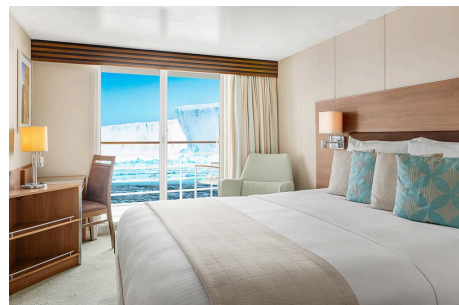
Cabins feature two single beds that can convert into a queen. They have a writing desk, floor length mirror, reading lamps, sitting chair, private bathrooms with a glass-wall shower, and a TV.



Category 5

UPPER DECK #209, 211, 214, 216, 218, 220-222, 224

Cabins feature a balcony with sliding glass doors, one queen-sized bed, writing desk, floor length mirror, reading lamps, private bathrooms with a glass-wall shower, and a TV. (Cabin 221 has two single beds that can convert to a queen.)



Category 6

UPPER DECK #213

This spacious cabin has a private balcony, two single beds that can be converted into a queen, a writing desk, double closet, bookcase, pull-out sofa, armchairs, two large windows and a TV. The sleeping area has a glass partition separating the living room. Bathrooms are generously sized with a roomy glass-walled shower stall and twin sinks.

VERANDA DECK #101-102

These spacious cabins can be converted into triples. They have two single beds that can be converted into a queen, a writing desk, double closet, bookcase, sofa-bed, chairs, two large windows and a TV. The sleeping area can be closed off with the glass partition. Bathrooms are generously sized with a roomy glass-walled shower stall and twin sinks.



Category 7

UPPER DECK #215, 219, 230

These large cabins with private balconies have two single beds that can convert to an Olympic-sized queen. They have seating areas with a sofa-bed and can be converted to triples. Cabins also include a desk with chairs, coffee table with sitting chair, and a small table. Bathrooms are generously sized with a roomy glass-walled shower stall and twin sinks.



Category A Solo

MAIN DECK #309-311, 329-334

These cabins feature one single bed and a large window, a writing desk, reading lamp, bathroom with a roomy glass-wall shower stall, and a TV.



Category B Solo

UPPER DECK #203, 208

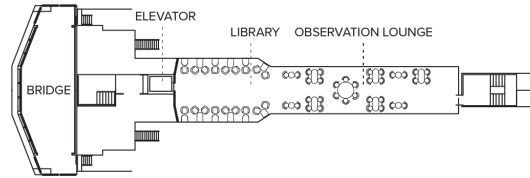
VERANDA DECK #105-106

These cabins feature one single bed and a large window, a writing desk, reading lamp, bathroom with a roomy glass-wall shower stall, and a TV.



Deck Plans

Bridge Deck



Wellness Deck



Veranda Deck

- Category 4
- Category 6
- Category B Solo



Upper Deck

- Category 4
- Category 5
- Category 6
- Category 7
- Category B Solo

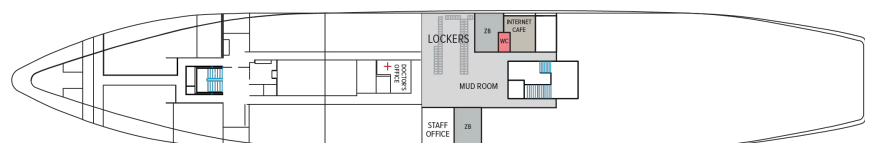


Main Deck

- Category 1
- Category 2
- Category 3
- Category 2 Solo



B Deck



Ship Amenities

Public Areas

Reception; three dining areas; global gallery; library, OM System photo locker; 24-hour Bistro area beverage bar; lounge with bar and state-of-the-art presentation facilities; observation lounge; mudroom with lockers for expedition gear; plus open access to the Bridge, the Captain, officers and on-duty wildlife spotters.

Meals

Meals are served in the dining room, Bistro bar or the Observation lounge, at a single seating with unassigned tables for an informal atmosphere and easy mingling. Menus feature sustainable choices, local where possible.

Cabins

81 outside cabins. All cabins face outside with windows or portholes, private bathroom and climate controls. Cabins are equipped with Wi-Fi, multiple electrical outlets, USB outlets, full length mirror and phones. TV featuring entertainment on demand, live feed for onboard presentations, bow camera and ship's position. Luxury bed linens and pillows. Botanically inspired shampoo, conditioner, shower gel and lotion are all available in cabin bathrooms, as well as an Expedition Essential Kit. Hair dryers, complimentary insulated water bottles and a National Geographic Atlas are available in each cabin.

Expedition Equipment

Zodiac landing craft, a fleet of double kayaks, a crow's nest camera, a hydrophone, underwater video cameras, video microscope and an ROV. Plus, for South Pacific voyages: snorkeling gear for all guests, scuba gear for a number of pre-qualified guests, stand-up paddleboards, glass-bottom Zodiac and splash-cam.

Special Features

A full-time doctor, undersea specialist, National Geographic photographer and National Geographic-Lindblad Expeditions certified photo instructor, internet café and laundry. Enjoy a session in the topside library with a good book.



Wellness

A glass-enclosed fitness center, outdoor stretching area, a LEXspa treatment room and sauna, staffed by wellness specialists.

Self-Disinfecting Ships

ACT Clean Coat™ is a light-activated, self-disinfecting cleaning process that continuously breaks down viruses, bacteria, mold, and airborne allergens across all ship surfaces. Not only does this create a cleaner, healthier shipboard environment for guests and crew alike, but this non-toxic, chemical-free system also saves more than one million gallons of water each year in our cleaning procedures, and reduces our carbon footprint as well as the amount of plastic and waste in our supply chain.

Special Offers

SAY YES—TO GOING WITHOUT SECOND THOUGHTS

Receive savings of £1100 per guest deducted from cabin fare on select 2026 voyages when you pay in full at time of booking. Applicable savings will be deducted from cabin fare before any additional savings with the purchase of cabin fare. To qualify for the savings, nonrefundable payment in full is due at time of booking. This promotional offer is subject to separate terms and conditions. Standard cancellation, refund, and change policies do not apply. All amounts paid in connection with this promotion are non-refundable and non-transferable, regardless of cancellation date, and no refund, credit, or compensation will be provided except as expressly stated herein. Promotional offer valid on new bookings only for select 2026 departures, subject to availability and offer may be withdrawn at any time without prior notice, not applicable on airfare or extensions, and may not be combined with other promotions. Additional restrictions may apply.

SUITE EXCLUSIVES

Spacious living areas and incredible views immerse you in the beauty of your marine surroundings. Our new Suite Exclusives package helps make your voyage all the more memorable. [Learn more](#)

CELEBRATE LIFE'S MILESTONES

Celebrate a milestone with a group of eight or more and enjoy a special amenity package including: 5% savings on voyage fares, custom group photo, US\$150 shipboard credit for the group, and other special

gifts. Milestone celebration to be communicated at time of booking.

COMBINING OFFERS

Certain offers may be combinable, up to two savings opportunities, except where noted otherwise. For example, travel with a group of 8 or more on back-to-back expeditions, and take advantage of both savings.

10% OFF BACK-TO-BACK VOYAGES

Save 10% on consecutive departures, applicable on voyage fares only and not valid on extensions or airfare. Valid for new bookings only, subject to availability, and may not be combined with other offers. Call for details.

SAVE 5% TRAVELING AS A GROUP

Save 5% when traveling as a group of 8 or more people. Valid for new bookings only on select departures, subject to availability, not applicable on extensions, and may not be combined with other offers. Call for details.

INCLUDED IN PRICE

All accommodations aboard ship or in hotels per itinerary; all meals as indicated in the itinerary, both aboard and onshore; beer, wine, cocktails, liquors and spirits aboard the ship (except certain premium brands which are available for purchase); hors d'oeuvres, 24-hour access to snacks, premium coffees and teas, non-alcoholic beverages, and filtered water; excursions and airport transfers to and from recommended flights, as indicated in the itinerary; crew gratuities; exploration tools curated to destination, such as Zodiacs, kayaks, guidance and company of our leading expedition staff; assistance by the National Geographic Photographer and Lindblad Expeditions-National Geographic certified photo instructor; access to the OM System Photo Gear Locker; presentations by expedition staff and expert guest speakers; complimentary parka or jacket, complimentary reusable water bottle; onboard physician consultations; morning stretch classes and 24-hour access to exercise equipment; 24-hour access to lounges, observation decks, library, and other shared spaces; park and site entrance fees, special access permits, and port taxes. Unused services or items included in our programs are non-refundable.

NOT INCLUDED IN PRICE

Airfare (except flights* when indicated as included); pre- and post-expedition extensions; additional hotel nights (except when indicated as included); private transfers; laundry, spa treatments, Wi-Fi, and phone services (except when indicated as included); travel protection plans; and passport, visa, and immigration fees.

*Recommended flight costs include flight(s) that take place during the date range of your trip to transport

travelers from one itinerary destination to another. This cost also includes ground transportation, luggage transfer, and airport assistance. If you prefer to arrange your own flights privately, have alternate means of transport, or wish to modify at a later time, please contact an Expedition Specialist at 1.833.400.0831

Additional costs associated with medical services outside onboard physician consultation.

TRAVEL PROTECTION PLAN

We strongly recommend our guests to take advantage of our Travel Protection Plan. This plan offers comprehensive coverage to protect you from cancellation fees, costs incurred due to trip delays/interruption, damage or loss of baggage, medical assistance, and evacuation during your travels. Our Travel Protection Plan is available for U.S. residents only, and may be purchased any time prior to final payment due date, Travel Protection premiums are non-refundable once plan is purchased. Learn more about our Travel Protection "Plus" Plan: <https://www.expeditions.com/terms-conditions/travel-protection-plan/>

CANCELLATION POLICY

Review our cancellation policy: <https://www.expeditions.com/cancellation-policy/>