








## Alaska's Inside Passage and Tracy Arm

Sail from the glacier-carved coasts of Alaska to the cedar-lined shores of British Columbia on a voyage through the heart of the Inside Passage. Navigate fjords shaped by ice and time, where whales surface in calm waters and forested mountains rise through the mist. Along the way, visit communities that embody a deep connection between culture and nature, from Alaska's Tlingit traditions to British Columbia's maritime heritage. Each day brings a new facet of this remarkable region—its wildlife, its stories and its enduring sense of wonder.

From  
**\$ 7,252** / per person  
Does not include flights

	<b>DATES</b> May, Jun, Jul, Aug and Sep		<b>DURATION</b> 8 Days
	<b>SHIPS</b> <i>Greg Mortimer</i>		
	<b>STARTS AT</b> Sitka, Alaska	→	 <b>ENDS AT</b> Vancouver, British Columbia

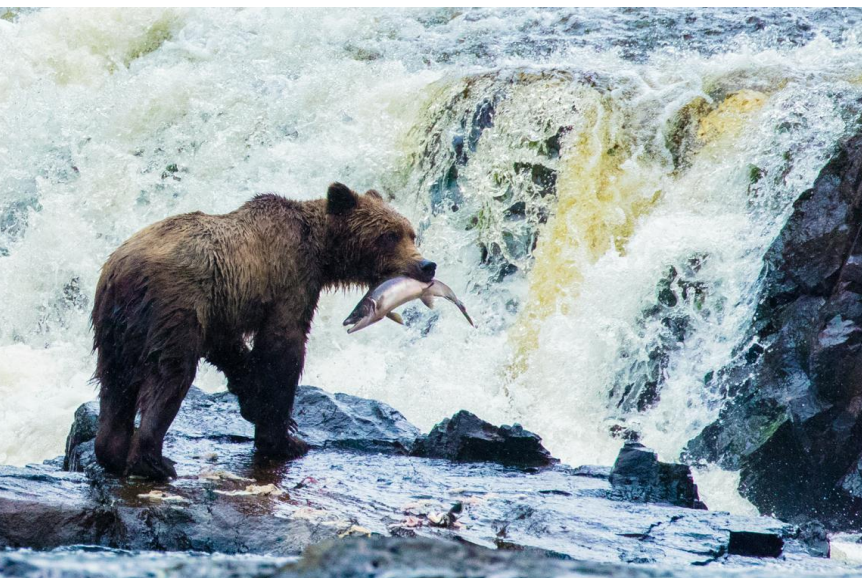
Please review the [Essential Eligibility Criteria](#) for hiking activities on this voyage.

This institution is an [equal opportunity provider](#).



## Highlights

- ★ Take in epic scenery from atop *Greg Mortimer's* hydraulic viewing platforms, which extend over the sea to offer an extraordinary vantage point for spotting breaching whales, calving glaciers and soaring eagles
- ★ Venture to remote corners of this wild frontier to hike temperate rainforests, paddle hidden coves and cruise by Zodiac among sculpted ice
- ★ Seek out the icons of Alaska: humpback whales, grizzly bears, bald eagles and much more
- ★ Discover the living heritage of Prince Rupert during visits to a longhouse-style museum and a restored cannery that echoes the region's seafaring past







## Day by day

### ■ DAY 1

#### Sitka, Alaska / Embark Ship

Arrive in Sitka, a charming town on the western coast of Baranof Island overlooking the Pacific Ocean. Known for its rich Tlingit culture and traces of Russian heritage dating back to the 1800s, Sitka offers a glimpse into Alaska's layered history. Embark this evening in time for cocktails and an introduction to the staff and crew.

Meals included: dinner

### ◇ DAY 2

#### Icy Strait / Inian Islands

Explore by Zodiac among the Inian Islands, a busy feeding ground for a variety of wildlife, including Steller sea lions and sea otters. Search for marine mammals in the nutrient-rich waters of Icy Strait.

Meals included: breakfast, lunch, dinner

### ◇ DAY 3

#### Haines

A paradise for adventure seekers, Haines offers the chance to cycle along the edge of a glacial fjord, go fly-fishing for salmon and Dolly Varden trout or take in stunning views on a world-class hike. Other options include a visit to the ancient Tlingit village of Klukwan for a dance demonstration and cultural interpretation before rafting down the Chilkat River.

Meals included: breakfast, lunch, dinner

### ◇ DAY 4

#### Tracy Arm-Fords Terror Wilderness / Frederick Sound

*Explore the wild and remote areas of Southeast Alaska by special use permit with the Tongass*

*National Forest.*

Wake up in Tracy Arm or Endicott Arm, part of the Tracy Arm-Fords Terror Wilderness. Cruise through the glacier-sculpted fjord, then set out to explore by Zodiac. View the soaring Dawes or South Sawyer Glacier up close—and keep an eye out for the dramatic sight of huge slabs of ice breaking off and crashing into the water below. If conditions permit, paddle a kayak below the steep walls of the fjord. Later, cruise Frederick Sound—prime waters for both orca and humpback whales.

Meals included: breakfast, lunch, dinner

### ◇ DAY 5

#### Southeast Alaska's Islands, Bays and Fjords

Today, nature is your guide as you set out with the flexibility to take advantage of wildlife sightings and weather conditions. Explore along the shoreline by Zodiac and, if conditions permit, kayak close to the intertidal zone as you search for the creatures that inhabit this dynamic environment. Sightings of bald eagles are common. Cruise expansive coastlines, always watching for marine and terrestrial life.

Meals included: breakfast, lunch, dinner

### ◇ DAY 6

#### Prince Rupert, British Columbia, Canada

Wake up in Prince Rupert, a scenic harbor town on British Columbia's rugged northwest coast. Get immersed in First Nations history at the Museum of Northern British Columbia, built in the style of a coastal longhouse. Breathe in the scent of cedar beams and peruse an impressive collection of ornate carvings, weavings, ceremonial objects and regalia. Visit the North Pacific Cannery Museum—a

collection of cannery buildings set amid untamed wilderness—that highlights British Columbia’s economic, cultural and natural development over the last century.

Meals included: breakfast, lunch, dinner

◇ DAY 7

## British Columbia’s Inside Passage

Trace the wild and scenic coastline of British Columbia, exploring inlets and islands and watching for whales, bald eagles, bears, deer and other wildlife. Enjoy talks from your expedition team or relax with a book in the lounge or on the observation deck.

Meals included: breakfast, lunch, dinner

■ DAY 8

## Vancouver / Disembark Ship

Disembark in Vancouver and transfer to the airport for flights home.

Meals included: breakfast

**Expedition**

Sitka, Alaska → Vancouver, British Columbia

**2027 Departure Dates**

Aboard *Greg Mortimer*

14 May	28 May		
11 Jun	25 Jun		
09 Jul	23 Jul		
06 Aug	20 Aug		
03 Sep	17 Sep		



## Greg Mortimer

---

Guests

154

Cabins

77

---

### A seamless blend of comfort, capability and discovery

Launched in 2019, the *Greg Mortimer* is a cutting-edge expedition vessel purpose-built to explore the polar regions—and it brings that same spirit of adventure to Alaska's glacial waters. The ship's signature inverted X-Bow™ delivers exceptional stability in dynamic seas, while its intimate 154-guest capacity fosters a personal onboard experience. From hydraulic viewing platforms that extend over the water for extraordinary wildlife encounters, to rapid-deploy Zodiac platforms that offer swift access to nature—every detail is designed to deepen your connection to Alaska's untamed landscapes.



This innovative expedition vessel blends cutting-edge design with immersive onboard experiences, delivering unforgettable encounters with Alaska.

It is the first passenger ship to feature the inverted Ulstein X-BOW, which glides through waves for a smoother, more fuel-efficient journey. Purpose-built for exploration, the ship features expansive observation decks, hydraulic viewing platforms and four Zodiac launch platforms that quickly bring guests close to Alaska's wild waterways.

Inviting communal spaces and onboard amenities such as a sauna with sea views, two Jacuzzis and a top-deck dining area offer relaxing places to unwind between adventures.





# Cabin Categories

## Category 1 - Aurora Stateroom Twins

**Deck 3:** #301, 302, 304, 314, 316, 318

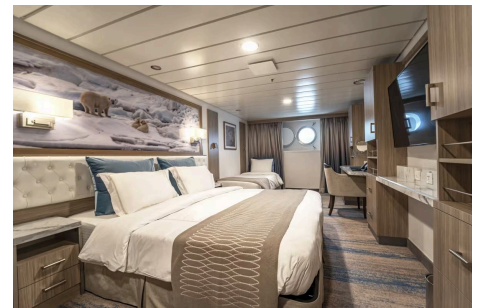
These well-appointed staterooms offer a comfortable 170-187 sq. ft. of space and feature classic porthole windows. Each cabin includes two twin beds (convertible to a double upon request), a private ensuite bathroom, ample storage, individual climate control and a writing desk. Additional amenities include an in-room safe and flat-screen TV.



## Category 2 - Aurora Stateroom Triples

**Deck 3:** #303, 305, 306, 307, 308, 310

Designed for small groups or families, these 230-245 sq. ft. triple-occupancy staterooms feature porthole windows, three twin beds (two can convert to a double upon request), a private ensuite bathroom, ample storage, individual climate control and a writing desk. Additional amenities include an in-room safe and flat-screen TV.

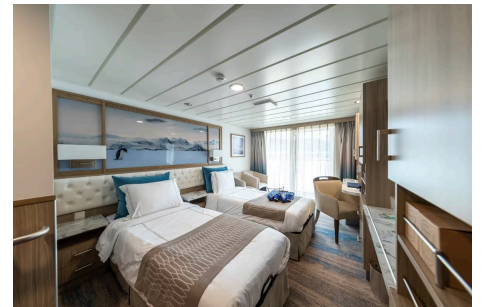


## Category 3 - Balcony Stateroom C

**Deck 4:** #401, 404, 417

**Deck 6:** #601, 602, 604, 611, 614, 617, 618, 627, 628, 629, 630

These 173-208 sq. ft. cabins feature a private balcony, as well as an ensuite bathroom, separate sitting area, ample storage, individual climate control and a writing desk. Additional amenities include an in-room safe and flat-screen TV.



## Category 4 - Balcony Stateroom B

**Deck 4:** #403, 405, 406, 408, 430, 431, 432, 433, 434

**Deck 6:** #603, 605, 606, 608, 623, 624, 625, 626

These 196-208 sq. ft. cabins feature a private balcony, as well as an ensuite bathroom, separate sitting area, ample storage, individual climate control and a writing desk. Many feature interconnecting options, making them ideal for families and traveling groups. Additional amenities include an in-room safe and flat-screen TV.



## Category 5 - Balcony Stateroom A

**Deck 4:** #407, 409, 410, 411, 412, 414, 415, 416, 418, 421, 422, 423, 424, 425, 426, 427

**Deck 6:** #607, 609, 610, 612, 619, 620, 621, 622

These premium cabins range from 196-224 sq. ft. and feature a private balcony, as well as an ensuite bathroom, separate sitting area, ample storage, individual climate control and a writing desk. Additional amenities include an in-room safe and flat-screen TV.



## Category 6 - Balcony Stateroom Superior

**Deck 4:** #419, 428, 429

**Deck 6:** #615, 616

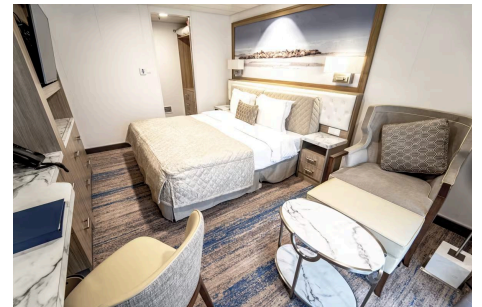
Floor-to-ceiling sliding glass doors and a private balcony offer exceptional viewing opportunities. Each cabin also features an ensuite bathroom (wheelchair accessible in select cabins), ample storage, individual climate control, writing desk, in-room safe and flat-screen TV.



## Category 7 - Junior Suites

**Deck 7:** #701, 702, 703, 704

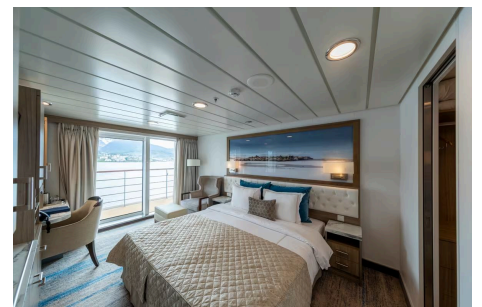
These accommodations offer 282 sq. ft. of elevated comfort, with sweeping views from the ship's uppermost accommodation deck. Each suite features a separate sitting area with lounge seating, a private balcony and floor-to-ceiling sliding glass doors that immerse guests in the landscapes of Alaska. They have an ensuite bathroom, ample storage, individual climate control, writing desk, in-room safe, flat-screen TV and mini bar.



## Category 8 - Captain's Suite

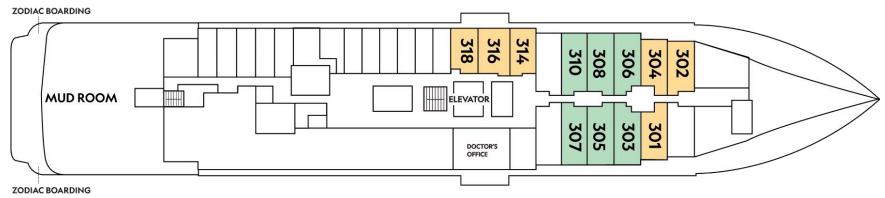
**Deck 4:** #420

This suite is 367 sq. ft. Located in a prime mid-ship position with easy access to the central stairs and elevator, the suite features a separate, spacious lounge area; private balcony; walk-in wardrobe and expansive floor-to-ceiling windows. It also has an ensuite bathroom, ample storage, individual climate control, writing desk, in-room safe, flat-screen TV and mini bar.



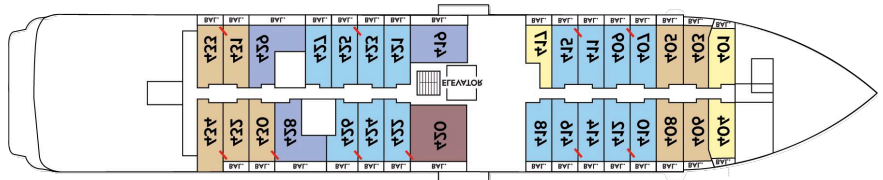
## Deck 3

- Category 1
- Category 2

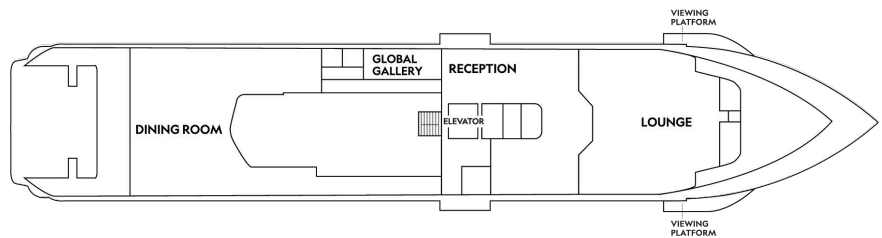


## Deck 4

- Category 3
- Category 4
- Category 5
- Category 6
- Category 8

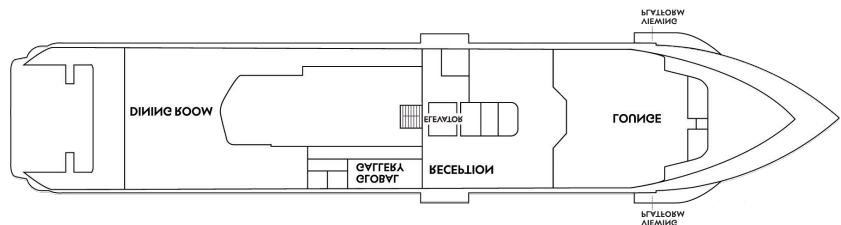


## Deck 5



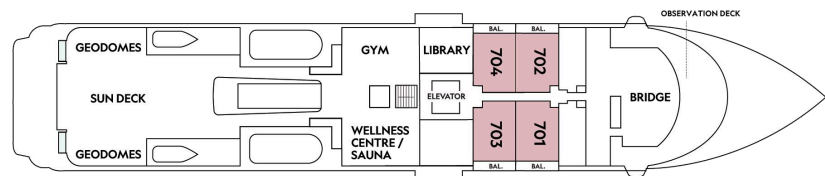
## Deck 6

- Category 3
- Category 4
- Category 5

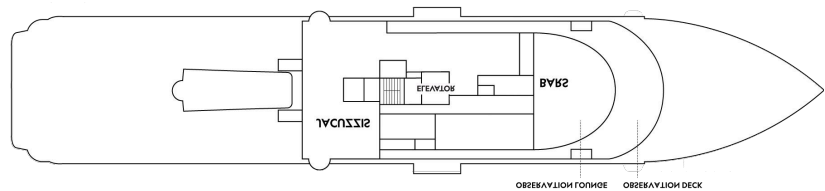


## Deck 7

- Category 7



## Deck 8





## Ship amenities

The *Greg Mortimer* blends modern comfort with expedition spirit, offering abundant spaces to unwind and engage with the landscapes around you. Take in sweeping views from the observation lounge or outdoor decks, relax in the library with refreshments, and enjoy wellness amenities ranging from saunas to open-air Jacuzzis. With expert presentations, open Bridge access and purpose-built viewing areas, every corner of the ship deepens your connection to the wildlife, coastlines and extraordinary natural beauty of Alaska.

### Observation Lounge

Enjoy 180° vistas from the observation deck, or relax in the indoor observation lounge with drinks from the adjoining bar.

### Lecture Room

The lecture theatre hosts daily Recaps and enriching presentations led by our expert expedition teams.

### Dining Room

Join us in the restaurant for three daily meals in a relaxed, open-seating setting.

### Fitness Center

Work out with a view in the ocean-facing fitness center featuring modern equipment and floor-to-ceiling windows.



### Wellness

The wellness center offers a relaxing sauna and a range of rejuvenating spa treatments.

### GeoDomes

Experience Alaska's wonders from heated glass domes offering panoramic views in complete weather-protected comfort.

## Special Offers

### SPECIAL SAVINGS

Receive savings of up to 20% on select voyages as indicated on our special offer page. Applicable savings will be deducted from cabin fare after any additional applicable savings with the purchase of cabin fare. Receive 50% off the deposit due at the time of booking on select 2026 and 2027 voyages outside of final payment. Remaining deposit balance is due at the time of final payment. Additional restrictions may apply. Offers valid on new bookings only for select 2026 and 2027 departures, subject to availability and offer may be withdrawn at any time without prior notice, not applicable on airfare or extensions, and may not be combined with other offers. Call for details.

### 10% OFF BACK-TO-BACK VOYAGES

Save 10% on consecutive departures, applicable on voyage fares only and not valid on extensions or airfare. Valid for new bookings only, subject to availability, and may not be combined with other offers. Call for details.

### BRINGING THE KIDS

We believe sharing an expedition with children is a life-enhancing experience. Save \$500 for each child under the age of 18 on any departure. Not applicable on extensions or airfare. Call for details.

### SAVE 5% TRAVELING AS A GROUP

Save 5% when traveling as a group of eight or more people. Valid on voyage fares only and not applicable on extensions or airfare. Deposit, final payments, and cancellation policies for group travel vary from our regular policies. Valid for new bookings only, subject

to availability, and may not be combined with other offers. Call for details.

### COMBINING OFFERS

Certain offers may be combinable, up to two savings opportunities, except where noted otherwise. For example, travel with a group of 8 or more on back-to-back expeditions, and take advantage of both savings.

### CELEBRATE LIFE'S MILESTONES

Celebrate a milestone with a group of eight or more and enjoy a special amenity package including: 5% savings on voyage fares, custom group photo, US\$150 shipboard credit for the group, and other special gifts. Milestone celebration to be communicated at time of booking.

## Included in price

All accommodations aboard ship or in hotels per itinerary; all meals as indicated in the itinerary, both aboard and onshore; beer, wine, cocktails, and spirits (premium brands available for purchase) aboard; excursions and airport transfers to and from flights arriving and departing within recommended window, as indicated in the itinerary; exploration tools such as Zodiacs, kayaks, stand-up paddleboards (where applicable); guidance and company of leading expedition staff; presentations by expedition staff and expert guest speakers; complimentary reusable water bottle; onboard physician consultations (where available); 24-hour access to exercise equipment (where applicable); 24-hour access to lounges, observation decks, library, and other shared spaces; basic Wi-Fi (where applicable); park and site entrance fees, special access permits, and port taxes. Unused services or items included in our programs are non-refundable.

## Not included in price

Airfare (except flights when indicated as included and/or as required); charter airfare (where applicable, except when indicated as included and/or as required); pre- and post-expedition extensions (except flights when indicated as included); additional hotel nights; premium cocktails and spirits; private transfers (except when indicated as included); crew gratuities; additional costs associated with medical services outside onboard physician consultation (where applicable); laundry, spa treatments, and phone services; travel protection plans; passport, visa and immigration fees. For select voyages, completing a medical evaluation form with VIKAND is required. If you utilize your physician, VIKAND's processing fee for your documentation will be added to your National Geographic-Lindblad Expeditions invoice. If you utilize VIKAND's physicians, an additional charge will be due and payable directly to VIKAND.

## Travel protection plan

We strongly recommend our guests to take advantage of our Travel Protection Plan. This plan offers comprehensive coverage to protect you from cancellation fees, costs incurred due to trip delays/interruption, damage or loss of baggage, medical assistance, and evacuation during your travels. Our Travel Protection Plan is available for U.S.

residents only, and may be purchased any time prior to final payment due date, Travel Protection premiums are non-refundable once plan is purchased. Learn more about our Travel Protection "Plus" Plan: <https://www.expeditions.com/terms-conditions/travel-protection-plan/>

## Cancellation policy

Review our cancellation policy: <https://www.expeditions.com/cancellation-policy/>