

Europe & Atlantic Isles
 41° 23' N 2° 10' E

Azores to Barcelona: A Special Solar Eclipse Voyage

Sail storied waters where the Atlantic meets the Mediterranean, a crossroads shaped over centuries by shifting empires, maritime trade and cultural exchange. Discover the Azores' otherworldly beauty, where volcanic landscapes rise stark against the sea; wander Morocco's vibrant medinas, alive with color and tradition; and explore Spain's enduring fortresses that echo with history. In August 2027, enjoy the rare opportunity to witness a total solar eclipse at sea, from aboard the open deck of *National Geographic Orion*—an unforgettable moment that culminates this once-in-a-lifetime voyage.

From
\$ 27,181 / per person
 Does not include flights

DATES Jul	DURATION 13 Days
SHIPS <i>National Geographic Orion</i>	
STARTS AT Ponta Delgada, Azores, Portugal	ENDS AT Barcelona, Spain

Highlights

- ★ Experience a solar eclipse over the Strait of Gibraltar, witnessing the moment of totality unfold between two continents (conditions permitting)
- ★ Travel aboard the intimate *National Geographic Orion*, with open decks and spacious observation areas that immerse you in your surroundings
- ★ Enjoy a special private visit to the legendary Alhambra, exploring its ornate palaces, tranquil courtyards and exquisite gardens that embody the splendor of Moorish Spain
- ★ Trace Spain's rich history from the Moorish fortresses of Malaga to Valencia's futuristic City of Arts and Sciences, an architectural complex that symbolizes Spain's dynamic blend of tradition and modernity





Day by day

■ DAY 1

Ponta Delgada, Azores, Portugal / Embark Ship

Arrive in Ponta Delgada, the capital of the Azores. Transfer from the airport to the city, and spend the day at leisure, wandering the cobblestone streets and soaking in the island’s unique blend of Portuguese and Atlantic culture. Later this afternoon, embark *National Geographic Orion*.

Meals included: dinner

◇ DAY 2

Ponta Delgada

Venture into the lush Furnas Valley and enjoy a traditional Azorean specialty for lunch: *cozido*, a hearty stew of meats and vegetables slow-cooked underground by volcanic steam. Weather permitting, set out with local spotters on a catamaran in search of cetaceans.

Meals included: breakfast, lunch, dinner

◇ DAYS 3-5

At Sea

Spend time relaxing at sea as the ship sails toward Morocco. Join the officers on the Bridge to learn about navigating the western coast of Africa, attend an engaging talk with one of the naturalists or take advantage of the ship’s amenities, such as a rejuvenating spa treatment with the wellness specialist.

Meals included: breakfast, lunch, dinner

◇ DAYS 6-7

Tangier, Morocco

This morning, arrive at the Strait of Gibraltar, the only natural waterway between the Mediterranean and the Atlantic Ocean. As you sail this legendary passage, a total solar eclipse unfolds overhead—an awe-inspiring spectacle that will blanket the seascape in otherworldly hues. Navigate to the path of totality to take in this rare celestial event from the best possible position (conditions permitting).

Later, explore Tangier, which lies just across the Strait of Gibraltar from Spain and has long been a gateway between Africa and Europe—a true cultural crossroads. Stroll the winding streets of its medina. Then ascend to the city’s legendary kasbah or visit the American Legation Museum, a symbol of centuries-old diplomacy, and the only U.S. National Historic Landmark located outside the country.

Meals included: breakfast, lunch, dinner

◇ DAY 8

Málaga, Spain

Málaga is one of Spain’s oldest cities—a vibrant coastal hub where layers of ancient history blend with contemporary culture. Explore the Alcazaba, a remarkably well-preserved Moorish fortress overlooking the sea, and climb to the Castillo de Gibralfaro, the 14th-century stronghold that once guarded both the Alcazaba and the city below.

Meals included: breakfast, lunch, dinner

◇ DAY 9

Motril

Visit the hillside village of Frigiliana, renowned for its whitewashed houses and Moorish old quarter, where winding lanes are decorated with vibrant ceramic mosaics. Continue to the Caves

of Nerja, a subterranean network stretching for nearly three miles, home to vast chambers, soaring stalactites and some of the world’s oldest known cave paintings. The day caps off in Grenada, with a special private visit to the famed Alhambra, a UNESCO World Heritage site. This 13th-century hilltop fortress exemplifies the artistic, scientific and architectural achievements of the Moors.

Meals included: breakfast, lunch, dinner

◇ DAY 10

Cartagena

Uncover Cartagena’s remarkable history, from its Roman foundations to its role as a Mediterranean stronghold. Stand before the magnificent Roman Theatre, admire the remains of the Augustus Temple and see the imposing city walls—a UNESCO World Heritage site.

Later, set out on a tapas tour of the city, weaving your way through narrow lanes and bustling terraces as you taste local delicacies like *caldero del mar menor*, a traditional fisherman’s rice dish. If time allows, you’ll also visit the night market, held in the summer along the harbor or in the central squares. Here, street musicians, pop-up performers and a relaxed local crowd bring a festival feel to the evening.

Meals included: breakfast, lunch, dinner

◇ DAY 11

Valencia

Begin your exploration of Valencia with a visit to its majestic cathedral, home to the revered Holy Chalice—believed by many to be the cup used by Jesus at the Last Supper. Savor an authentic paella, the city’s signature dish, before exploring the City of Arts and Sciences, a futuristic complex where science, culture and architecture converge. Later, wander the winding streets of the old quarter, browse the bustling Mercado Central or take in

world-class art at the Palau de les Arts.

Meals included: breakfast, lunch, dinner

◇ DAY 12

Columbretes Islands

The ship anchors near the city of Castellón on mainland Spain. From here, enjoy water activities in the Columbretes Islands, an archipelago 30 miles off the coast. The islands are a haven for wildlife, offering opportunities to observe endemic species such as Andouin’s gull, Eleonora’s falcon and Scopoli’s shearwater.

Meals included: breakfast, lunch, dinner

■ DAY 13

Barcelona / Disembark Ship

Enjoy breakfast on board before disembarking and transferring to the airport for flights home.

Meals included: breakfast

Expedition

Ponta Delgada, Azores, Portugal → Barcelona, Spain

2027 DEPARTURE DATES

Aboard *National Geographic Orion*

28 Jul				
--------	--	--	--	--



National Geographic Orion

GUESTS

102

CABINS

53

Joining the Lindblad fleet in 2013, the state-of-the-art *National Geographic Orion* serves as a luxurious base camp for voyages to the far-flung corners of the planet.

Built in Germany by the Cassens shipyard, the 102-guest *National Geographic Orion* was created with a high ice class to be able to venture safely into polar regions. A ship of her size is seldom built with such ice-cutting ability, which makes her a rarity. She is yacht-scale, yet rugged enough to venture far afield, making her a perfect addition to the Lindblad fleet, which she joined in 2013. Her size and nimbleness offer the perfect combination of safety and liberty to voyage untrammelled locations. In fact, *National Geographic Orion* currently holds the distinction of having sailed further south than any other Lindblad vessel.

Her menu, created by famed Australian chef, Serge Dansereau, owner of Sydney's acclaimed Bather's Pavilion restaurant, enormously popular with *National Geographic Orion's* guests, so impressed Sven Lindblad, that Serge, a chef-owner who shared the Lindblad commitment to serving local and sustainable food, was enlisted to design the dining program for the entire National Geographic-Lindblad Expeditions fleet.

National Geographic Orion is gracious and intimate, with a rewarding, almost clubby feeling. Of her many amenities and features, the most appealing is her outside deck space which beckons in the balmy reaches of the Pacific, and on those days in Antarctica when the midnight sun and the spectacle of the ice makes going indoors, let alone going to bed, impossible.



Cabin Categories

Category 1

MAIN DECK #316, 318-321

Cabins feature a luminous oval window and configurable beds: two single beds that can be converted to a queen. An armchair, reading lamps, a flat screen TV, two bedside tables, coffee table, desk and climate controls complete the amenities. Marble bathrooms are generously sized and include a spacious shower stall with a glass door.



Category 2

MAIN DECK #302-312, 314, 315, 317

Cabins feature a luminous oval window and configurable beds: two single beds that can be converted to a queen. An armchair, reading lamps, a flat screen TV, bedside table, coffee table, desk and climate controls complete the amenities. Marble bathrooms are generously sized and include a spacious shower stall with a glass door.



Category 3

UPPER DECK #401-412, 414-419

These suites feature a sitting area with a large window, a sofa—except slightly smaller #401 & #402—an armchair or two, writing/laptop desk, reading lamps, coffee table, flat screen TV, bedside table and climate controls. Beds are configurable (call for details). Marble bathrooms include a spacious shower stall with a glass door.



Category 4

BRIDGE DECK #511, 515

These two suites feature separate sleeping and sitting areas, with a chair and armchair, coffee table, and a two-cushion sofa facing an expansive window. Beds are configurable (call for details). Ample storage, reading lamps, a flat screen TV and climate controls complete the amenities. Marble bathrooms are generously sized and include a spacious shower stall with a glass door.



Category 5

BRIDGE DECK #501, 503-506, 508

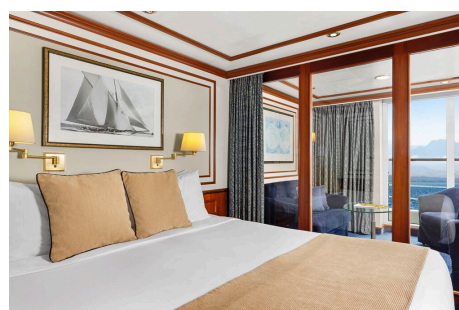
These spacious suites feature open living areas and sliding glass doors opening to a shared French balcony. Beds are configurable (call for details). A separate sitting area with armchairs and a sofa, a writing/laptop desk, coffee table, well-placed reading lamps, a flat screen TV and climate controls complete the decor. Marble bathrooms are generously sized and include a spacious shower stall with a glass door.



Category 6

BRIDGE DECK #502, 507, 509*, 510

These large, elegant suites feature a French balcony, except for #509 which has double windows. Each provides a separate living area with a sofa and two armchairs, coffee table, except for #502, which uniquely offers a 'soaking tub with a view' in addition to a shower stall and expansive vanity. All cabins have reading lamps, a flat screen TV and climate controls. Marble bathrooms are generously sized and include a spacious shower stall with a glass door.



Category 1 Solo

MAIN DECK #301, 322, 323

These solo cabins feature a window or two portholes, a queen-size bed, except for #301 which has a double bed, writing desk and chair, climate controls, reading lamps, coffee table, two bedside tables and a TV. Marble bathrooms are generously sized and include a roomy shower stall with a glass door.



Category 3 Solo

UPPER DECK #512

This solo suite features two single beds and two large windows, plus two armchairs and a small table, reading lamps, coffee table a flat screen TV and climate controls. The marble bathroom is generously sized and includes a spacious shower stall with a glass door.



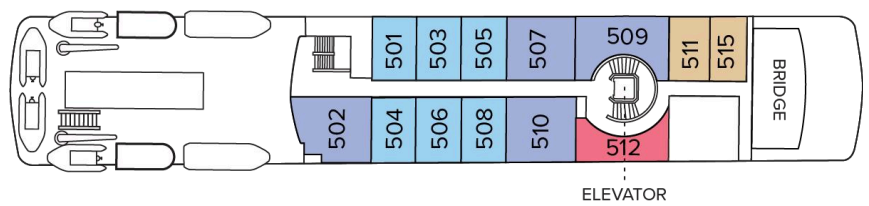
Deck Plans

Observation Deck



Bridge Deck

- Category 4
- Category 5
- Category 6
- Category 3 Solo



Upper Deck

- Category 3



Main Deck

- Category 1
- Category 2
- Category 1 Solo



Expedition Deck



Ship Amenities

Public Areas

Reception; two dining areas; lounge with bar and state-of-the-art presentation facilities; OM System photo locker; sundeck with a whirlpool hot tub that doubles as a plunge pool in warm climates; observation lounge and library; global gallery; a marina platform; plus open access to the Bridge, the Captain, officers and on-duty wildlife spotters.

Meals

Meals are served in the dining room, or weather permitting, the outdoor café, at a single seating with unassigned tables for an informal atmosphere and easy mingling. Menus feature sustainable choices, local where possible.

Cabins

All cabins face outside with windows or portholes, private bathroom, and climate controls. Cabins feature a coffee table, lounge chair, desk, phone, TV with on demand entertainment, multiple outlets and USB, mini refrigerator, and safe. Luxury linens and pillows. Botanically inspired shampoo, conditioner, shower gel and lotion are all available in cabin bathrooms, as well as an Expedition Essential Kit. Hair dryers, complimentary insulated water bottles and a National Geographic Atlas are available in each cabin.

Expedition Equipment

Zodiac landing craft, a fleet of double kayaks, a crow's nest camera, a hydrophone, underwater video cameras, video microscope and an ROV. Plus, for South Pacific voyages: snorkeling gear for all guests, scuba gear for a number of pre-qualified guests, stand-up paddleboards, glass-bottom Zodiac and splash-cam.

Special Features

A full-time doctor, undersea specialist, National Geographic photographer and National Geographic-Lindblad Expeditions certified photo instructor. A central staircase and elevator reach all decks. Enjoy daily teatime and the smoothies served after the sunrise stretch sessions on the sundeck in Polynesia.

Wellness

A fitness center, LEXspa treatment room and sauna, staffed by wellness specialists.

Self-Disinfecting Ships

ACT Clean Coat™ is a light-activated, self-disinfecting cleaning process that continuously breaks down viruses, bacteria, mold, and airborne allergens across all ship surfaces. This non-toxic, chemical-free system also helps us save over one million gallons of water each year in our cleaning procedures.

Special Offers

10% OFF BACK-TO-BACK VOYAGES

Save 10% on consecutive departures, applicable on voyage fares only and not valid on extensions or airfare. Valid for new bookings only, subject to availability, and may not be combined with other offers. Call for details.

PAY BY DEBIT: EARN A \$100 ONBOARD CREDIT

The \$100 onboard credit offer is applied after the final payment and requires 85% of the cost of the voyage to be placed on a debit card. Maximum of one \$100 onboard credit per cabin. The \$100 onboard credit is a non-refundable, non-transferable credit that can be used for various onboard purchases such as global gallery and spa treatments. It has no cash value, cannot be refunded if not fully utilized, and will be forfeited if not fully redeemed by the end of the voyage. This offer is combinable with other offers. If the booking is altered or canceled, the onboard credit may be forfeited, and it cannot be transferred if the booking is moved to another guest. Lindblad Expeditions reserves the right to modify or cancel the offer without prior notice. Offer applies to Lindblad Expeditions' owned ships only. Offer valid only for Debit Cards issued in the United States for payments made from the United States.

COMBINING OFFERS

Certain offers may be combinable, up to two savings opportunities, except where noted otherwise. For example, travel with a group of 8 or more on back-to-back expeditions, and take advantage of

both savings.

CELEBRATE LIFE'S MILESTONES

Celebrate a milestone with a group of eight or more and enjoy a special amenity package including: 5% savings on voyage fares, custom group photo, US\$150 shipboard credit for the group, and other special gifts. Milestone celebration to be communicated at time of booking.

SAVE 5% TRAVELING AS A GROUP

Save 5% when traveling as a group of 8 or more people. Valid for new bookings only on select departures, subject to availability, not applicable on extensions, and may not be combined with other offers. Call for details.

TRAVEL PROTECTION PLAN

We strongly recommend our guests to take advantage of our Travel Protection Plan. This plan offers comprehensive coverage to protect you from cancellation fees, costs incurred due to trip delays/interruption, damage or loss of baggage, medical assistance, and evacuation during your travels. Our Travel Protection Plan is available for U.S. residents only, and may be purchased any time prior to final payment due date, Travel Protection premiums are non-refundable once plan is purchased. Learn more about our Travel Protection "Plus" Plan: <https://www.expeditions.com/terms-conditions/travel-protection-plan/>

CANCELLATION POLICY

Review our cancellation policy: <https://www.expeditions.com/cancellation-policy/>