








Sailing the St. Lawrence Seaway and Canadian Maritimes

Discover the natural beauty and diverse cultures of Eastern Canada on an adventure along the picturesque St. Lawrence River. Stroll through 400 years of history in Old Québec—a UNESCO World Heritage Site—and St-Pierre, the only remaining French territory in North America. Venture into the rugged wildernesses of the Saguenay River Fjord in search of rare wildlife, and visit the Côte-Nord, known for its striking monoliths and limestone island. And, at every turn, you'll be immersed in the region's fascinating history, stemming from French, British and Indigenous roots.

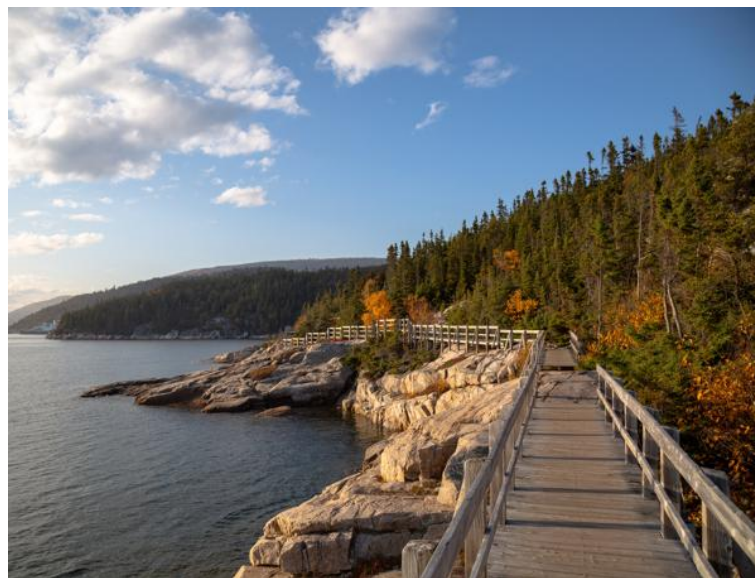
From
A\$ 14,143 / per person
 Does not include flights

 DATES Sep	 DURATION 11 or 12 Days
 SHIPS <i>National Geographic Explorer</i>	
 STARTS AT St. John's, Newfoundland	 ENDS AT St. John's, Newfoundland

Minimum Age Requirement: Any children booked on Antarctic or Arctic voyages must be at least 4 years old at time of embarkation.

Highlights

- ★ Look for majestic belugas and minke whales in the Saguenay River Fjord and right whales in the Gulf of St. Lawrence
- ★ Stroll the charming streets of Québec City to explore its historic architecture, vibrant culture and renowned culinary scene
- ★ Immerse yourself in the region’s gastronomy both on and off ship—from Indigenous recipes such as traditional Bannock bread to fresh-caught seafood in fishing villages
- ★ Explore the stunning landscapes of the Îles de la Madeleine—its miles of dunes, grassy hills and red sandstone cliffs—in the company of local experts





Day by day

■ DAY 1

St. John's, Newfoundland / Embark Ship

Arrive in St. John's, the picturesque capital city of Newfoundland and Labrador, in the afternoon and embark the ship.

Meals included: dinner

◇ DAY 2

St-Pierre, France

The first landfall is in St-Pierre, France's oldest remaining overseas territory. Get to know this picturesque French fishing enclave by visiting a local island, where you will learn about its historic cod fisheries and explore the fascinating L'Arche Museum, dedicated to preserving the history of this remote territory.

Meals included: breakfast, lunch, dinner

◇ DAY 3

At Sea

Sail across the Gulf of St. Lawrence, known for its abundant plant and animal life both under water and on shore. Find a place on the observation deck to watch for the wildlife that calls this region home—including seven species of whales, such as the endangered North Atlantic right whale. Enjoy the day on board to edit photos, attend a presentation about the region with one of the naturalists or schedule a massage with the wellness specialist.

Meals included: breakfast, lunch, dinner

◇ DAYS 4-5

Côte-Nord, Québec, Canada

Bordering the Labrador Sea and the Gulf of St. Lawrence, the Côte-Nord region of Québec offers breathtaking, wild landscapes and geologic diversity, abundant marine life, maritime history and a culture influenced by its nine Indigenous communities. Spend two days exploring this stunning marine environment by Zodiac, kayak and on foot as you learn about the area alongside local experts.

Meals included: breakfast, lunch, dinner

◇ DAY 6

Québec City

Arrive in the provincial capital, Québec City. The only remaining walled city north of Mexico, Québec's rich history comes to life amid the ramparts and ancient streets of its old town, a UNESCO World Heritage site. Experience the city's European charm while strolling the lanes below the stately Citadel, keeping an eye out for the iconic realist murals that showcase Québec's history. As you explore, get a taste for the city's renowned culinary scene, from its First Nations recipes and traditional French and English flavors to maple syrup-infused sweets.

Meals included: breakfast, lunch, dinner

◇ DAYS 7-8

Saguenay River and Tadoussac / At Sea

Originating in Lake Saint-Jean in the Québécois highlands and draining into the St. Lawrence Seaway, the Saguenay River is a haven for marine life, most notably the beluga whale. Harbor seals, porpoises and minke, blue and fin whales can also be seen at different times throughout the year in these nutrient-rich waters. The river's fjord, carved

by glaciers over 10,000 years ago, plunges more than 900 feet below the surface, and its rising peaks and hanging cliffs soar more than 1,500 feet into the air. The landscape provides an astonishing backdrop as you sail and explore where two iconic rivers meet.

Enjoy a day at sea by attending an engaging presentation by naturalists and experts, relaxing with a book in the lounge or experiencing a wellness treatment at the spa. Keep an eye out for wildlife as the ship travels towards Îles de la Madeleine.

Meals included: breakfast, lunch, dinner

◇ DAY 9

Îles de la Madeleine

A cluster of wispy islands isolated in the Gulf of St. Lawrence, the Îles de la Madeleine are home to miles of golden beaches and dunes, grassy hills and dazzling red sandstone cliffs. Local experts will guide you across this landscape of caves and sea arches, stopping along the way in colorful fishing villages as you learn about Acadian culture.

Meals included: breakfast, lunch, dinner

◇ DAY 10

At Sea

Retrace a path back through the Gulf of St. Lawrence, passing between Nova Scotia and Newfoundland. Spend the day on board making final edits to your photos with the certified photography instructor or head to the bridge to learn about the ship's navigation from the crew.

Meals included: breakfast, lunch, dinner

■ DAY 11

St. John's, Newfoundland / Disembark Ship

Disembark in St. John's and transfer to the airport for flights home.

Meals included: breakfast

2026 Expedition

St. John's, Newfoundland → St. John's,
Newfoundland

2026 DEPARTURE DATES

Aboard *National Geographic Explorer*

02 Sep	12 Sep			
--------	--------	--	--	--

Alternative Routes

Visit [Expeditions.com](https://www.expeditions.com) for more information.

2027 Departure Dates

09 Sep, 20 Sep



National Geographic Explorer

GUESTS

148

CABINS

81

Built to handle deep swells and towering waves, the *National Geographic Explorer* lends herself to globe-spanning travel and a dedication to curiosity and wonder.

Originally constructed for service along Norway's coast as part of the famed Hurtigruten, or Coastal Express, she ferried passengers among the fjords of this iconic coast in conditions that could deteriorate into heavy seas in a matter of minutes. She had to be able to handle deep swells and towering waves—and have a high degree of maneuverability. Those traits, and an ideal size, made her a natural choice for addition to the Lindblad fleet.

The plans to completely rebuild her drew on 50 years of pioneering expedition history and expertise. *National Geographic Explorer* was equipped with an ice-strengthened hull and advanced navigation equipment for polar expeditions; a roster of tools for exploration; and a well-appointed interior with vast expanses of glass for an unprecedented connection to the environment. Her interior and exterior design embodied the Lindblad expedition ethos—the privilege of wildness and the luxury of comfort.

For many guests she remains their paradigm of an expedition ship. She is devoted to exploration—from her Welcoming Bridge, and the Chart Room below it where you can tuck in to warm up with a hot chocolate, to her high-perched Observation deck with its aqueous light and compelling 24/7 views. Even the art on the walls— from the Hurley prints of Shackleton’s expedition to the stunning National Geographic photos— tells an uber- narrative of globe-spanning travel and a dedication to curiosity and wonder.

National Geographic Explorer is a state-of-the-art expedition ship. She is a fully stabilized, ice-class vessel, with an ice-reinforced hull, enabling her to navigate polar passages while providing exceptional comfort.

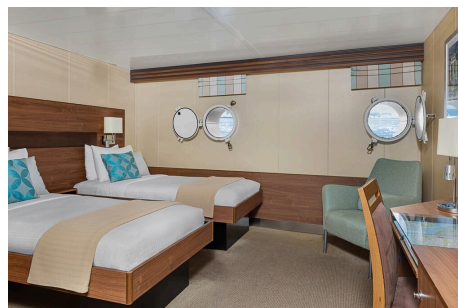


Cabin Categories

Category 1

MAIN DECK #301-308

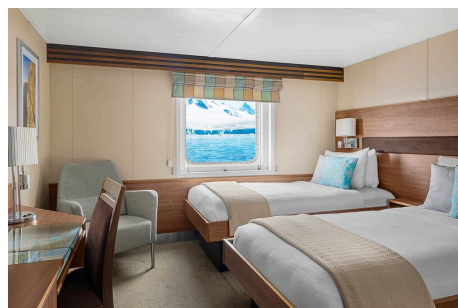
Cabins feature one or two portholes. Most cabins feature two single beds that can be converted to a queen. Cabins #301-306 feature one queen-sized bed. All cabins feature a writing desk, floor length mirror, reading lamps, well-appointed bathrooms with a roomy glass-wall shower, and a TV.



Category 2

MAIN DECK #317-320, 335-336

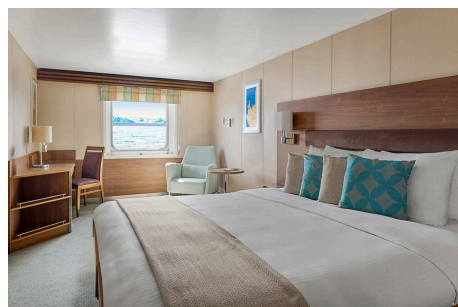
Cabins feature two single beds (some can convert to a queen-sized bed), and one large window. They offer a writing desk, floor length mirror, reading lamps, sitting chair, well-appointed bathrooms with a roomy glass-wall shower, and a TV.



Category 3

MAIN DECK #313-316, 321-328, 337-340, 342, 344, 348, 350

Cabins feature two single beds (some can convert to a queen-sized bed), one large window, and two sitting chairs and a small table and ample storage. They have a writing desk, floor length mirror, reading lamps, well-appointed bathrooms with a roomy glass-wall shower, and a TV. Cabins 341 & 343 have a sofa bed for a triple.



Category 4

UPPER DECK #201-202, 204-207, 210, 212, 217, 226, 228

Cabins feature two single beds and at least one large window. All cabins can convert between two single beds to a queen, except Cabins 217, 226 and 228, which feature one queen-size bed only. All cabins feature climate controls, sitting chairs and a TV. Bathrooms are also generously sized with a roomy, glass-walled shower stall.

VERANDA DECK #103-104, 107-108

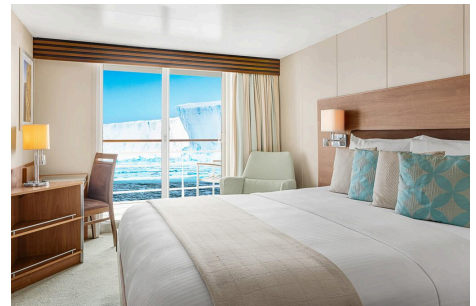
Cabins feature two single beds that can convert into a queen. They have a writing desk, floor length mirror, reading lamps, sitting chair, private bathrooms with a glass-wall shower, and a TV.



Category 5

UPPER DECK #209, 211, 214, 216, 218, 220-222, 224

Cabins feature a balcony with sliding glass doors, one queen-sized bed, writing desk, floor length mirror, reading lamps, private bathrooms with a glass-wall shower, and a TV. (Cabin 221 has two single beds that can convert to a queen.)



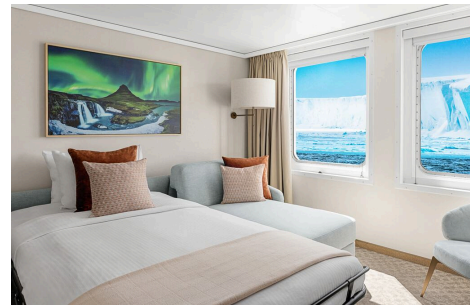
Category 6

UPPER DECK #213

This spacious cabin has a private balcony, two single beds that can be converted into a queen, a writing desk, double closet, bookcase, pull-out sofa, armchairs, two large windows and a TV. The sleeping area has a glass partition separating the living room. Bathrooms are generously sized with a roomy glass-walled shower stall and twin sinks.

VERANDA DECK #101-102

These spacious cabins can be converted into triples. They have two single beds that can be converted into a queen, a writing desk, double closet, bookcase, sofa-bed, chairs, two large windows and a TV. The sleeping area can be closed off with the glass partition. Bathrooms are generously sized with a roomy glass-walled shower stall and twin sinks.



Category 7

UPPER DECK #215, 219, 230

These large cabins with private balconies have two single beds that can convert to an Olympic-sized queen. They have seating areas with a sofa-bed and can be converted to triples. Cabins also include a desk with chairs, coffee table with sitting chair, and a small table. Bathrooms are generously sized with a roomy glass-walled shower stall and twin sinks.



Category A Solo

MAIN DECK #309-311, 329-334

These cabins feature one single bed and a large window, a writing desk, reading lamp, bathroom with a roomy glass-wall shower stall, and a TV.



Category B Solo

UPPER DECK #203, 208

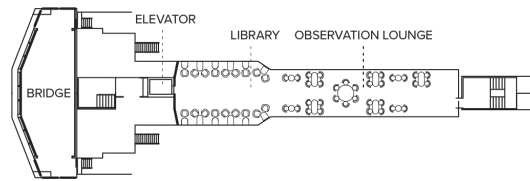
VERANDA DECK #105-106

These cabins feature one single bed and a large window, a writing desk, reading lamp, bathroom with a roomy glass-wall shower stall, and a TV.



Deck Plans

Bridge Deck

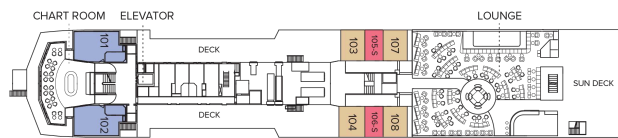


Wellness Deck



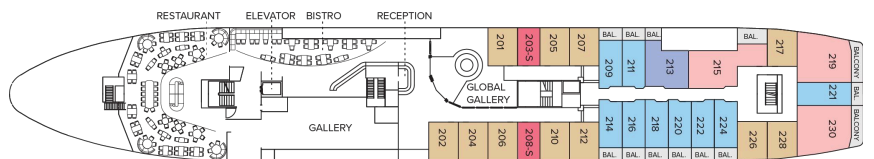
Veranda Deck

- Category 4
- Category 6
- Category B Solo



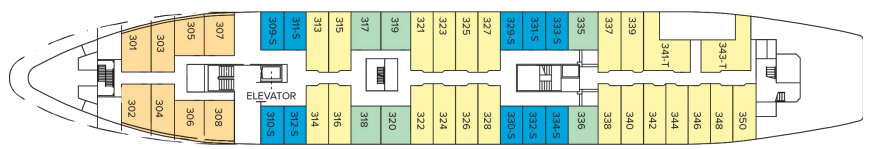
Upper Deck

- Category 4
- Category 5
- Category 6
- Category 7
- Category B Solo



Main Deck

- Category 1
- Category 2
- Category 3
- Category 2 Solo



B Deck



Ship Amenities

Public Areas

Reception; three dining areas; global gallery; library, OM System photo locker; 24-hour Bistro area beverage bar; lounge with bar and state-of-the-art presentation facilities; observation lounge; mudroom with lockers for expedition gear; plus open access to the Bridge, the Captain, officers and on-duty wildlife spotters.

Meals

Meals are served in the dining room, Bistro bar or the Observation lounge, at a single seating with unassigned tables for an informal atmosphere and easy mingling. Menus feature sustainable choices, local where possible.

Cabins

81 outside cabins. All cabins face outside with windows or portholes, private bathroom and climate controls. Cabins are equipped with Wi-Fi, multiple electrical outlets, USB outlets, full length mirror and phones. TV featuring entertainment on demand, live feed for onboard presentations, bow camera and ship's position. Luxury bed linens and pillows. Botanically inspired shampoo, conditioner, shower gel and lotion are all available in cabin bathrooms, as well as an Expedition Essential Kit. Hair dryers, complimentary insulated water bottles and a National Geographic Atlas are available in each cabin.

Expedition Equipment

Zodiac landing craft, a fleet of double kayaks, a crow's nest camera, a hydrophone, underwater video cameras, video microscope and an ROV. Plus, for South Pacific voyages: snorkeling gear for all guests, scuba gear for a number of pre-qualified guests, stand-up paddleboards, glass-bottom Zodiac and splash-cam.

Special Features

A full-time doctor, undersea specialist, National Geographic photographer and National Geographic-Lindblad Expeditions certified photo instructor, internet café and laundry. Enjoy a session in the topside library with a good book.



Wellness

A glass-enclosed fitness center, outdoor stretching area, a LEXspa treatment room and sauna, staffed by wellness specialists.

Self-Disinfecting Ships

ACT Clean Coat™ is a light-activated, self-disinfecting cleaning process that continuously breaks down viruses, bacteria, mold, and airborne allergens across all ship surfaces. Not only does this create a cleaner, healthier shipboard environment for guests and crew alike, but this non-toxic, chemical-free system also saves more than one million gallons of water each year in our cleaning procedures, and reduces our carbon footprint as well as the amount of plastic and waste in our supply chain.

Special Offers

SAY YES—TO GOING WITHOUT SECOND THOUGHTS

Receive savings of AUD\$2000 per guest deducted from cabin fare on select 2026 voyages when you pay in full at time of booking. Applicable savings will be deducted from cabin fare before any additional savings with the purchase of cabin fare. To qualify for the savings, nonrefundable payment in full is due at time of booking. This promotional offer is subject to separate terms and conditions. Standard cancellation, refund, and change policies do not apply. All amounts paid in connection with this promotion are non-refundable and non-transferable, regardless of cancellation date, and no refund, credit, or compensation will be provided except as expressly stated herein. Promotional offer valid on new bookings only for select 2026 departures, subject to availability and offer may be withdrawn at any time without prior notice, not applicable on airfare or extensions, and may not be combined with other promotions. Additional restrictions may apply.

CELEBRATE LIFE'S MILESTONES

Celebrate a milestone with a group of eight or more and enjoy a special amenity package including: 5% savings on voyage fares, custom group photo, US\$150 shipboard credit for the group, and other special gifts. Milestone celebration to be communicated at time of booking.

COMBINING OFFERS

Certain offers may be combinable, up to two savings opportunities, except where noted otherwise.

For example, travel with a group of 8 or more on back-to-back expeditions, and take advantage of both savings.

10% OFF BACK-TO-BACK VOYAGES

Save 10% on consecutive departures, applicable on voyage fares only and not valid on extensions or airfare. Valid for new bookings only, subject to availability, and may not be combined with other offers. Call for details.

SAVE 5% TRAVELING AS A GROUP

Save 5% when traveling as a group of 8 or more people. Valid for new bookings only on select departures, subject to availability, not applicable on extensions, and may not be combined with other offers. Call for details.

INCLUDED IN PRICE

All accommodations aboard ship or in hotels per itinerary; all meals as indicated in the itinerary, both aboard and onshore; beer, wine, cocktails, liquors and spirits aboard the ship (except certain premium brands which are available for purchase); hors d'oeuvres, 24-hour access to snacks, premium coffees and teas, non-alcoholic beverages, and filtered water; excursions and airport transfers to and from recommended flights, as indicated in the itinerary; crew gratuities; exploration tools curated to destination, such as Zodiacs, kayaks, guidance and company of our leading expedition staff; assistance by the National Geographic Photographer and Lindblad Expeditions-National Geographic certified photo instructor; access to the OM System Photo Gear Locker; presentations by expedition staff and expert guest speakers; complimentary parka or jacket, complimentary reusable water bottle; onboard physician consultations; morning stretch classes and 24-hour access to exercise equipment; 24-hour access to lounges, observation decks, library, and other shared spaces; park and site entrance fees, special access permits, and port taxes. Unused services or items included in our programs are non-refundable.

NOT INCLUDED IN PRICE

Airfare (except flights* when indicated as included); pre- and post-expedition extensions; additional hotel nights (except when indicated as included); private transfers; laundry, spa treatments, Wi-Fi, and phone services (except when indicated as included); travel protection plans; and passport, visa, and immigration fees.

*Recommended flight costs include flight(s) that take place during the date range of your trip to transport

travelers from one itinerary destination to another. This cost also includes ground transportation, luggage transfer, and airport assistance. If you prefer to arrange your own flights privately, have alternate means of transport, or wish to modify at a later time, please contact an Expedition Specialist at 1.833.400.0831

Additional costs associated with medical services outside onboard physician consultation.

TRAVEL PROTECTION PLAN

We strongly recommend our guests to take advantage of our Travel Protection Plan. This plan offers comprehensive coverage to protect you from cancellation fees, costs incurred due to trip delays/interruption, damage or loss of baggage, medical assistance, and evacuation during your travels. Our Travel Protection Plan is available for U.S. residents only, and may be purchased any time prior to final payment due date, Travel Protection premiums are non-refundable once plan is purchased. Learn more about our Travel Protection "Plus" Plan: <https://www.expeditions.com/terms-conditions/travel-protection-plan/>

CANCELLATION POLICY

Review our cancellation policy: <https://www.expeditions.com/cancellation-policy/>